



Innovative Safety Solutions

MASTER STOP® Aluminum Tape Treads

MASTER STOP™ Aluminum Tape Treads Advantages

Tape treads are made with an abrasive grit coated polyester film

Creates visual awareness for cautionary areas

Available in our standard depths of 2.75" & 7.5"

Available in lengths up to 144"

Surface can be swept to remove any loose dirt

Treads can be cleaned using a general purpose industrial floor cleaner

Email us at
Sales@SafeWayTraction.com

Made in USA

Sure-Foot's MASTER STOP™ Aluminum Tape Treads are a quick, permanent and attractive solution for stair renovation projects.

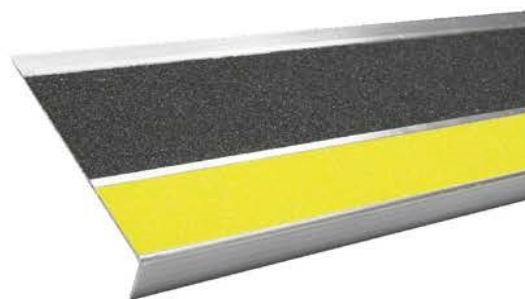
Master Stop® Tape Treads are an eye catching, resilient, high quality aluminum extrusion that is inlayed with any of our anti-slip tape colors. These treads are used on renovation projects to deliver maximum safety and durability while providing a look that compliments todays building designs. Master Stop® Tape Treads are created using heat treated, exterior grade 6063 T5 aluminum, inlayed with any of our anti-slip tapes. Available in 2.75" & 7.5" depth's and lengths up to 144", this product will meet and exceed OSHA and ADA recommendations for slip resistance on wet or dry surfaces.



Shown in 50-GLOW

2.75" with tapered transition ramp (Nose, single cavity)
Overall thickness: .18"

Shown in 19-BLACK and 08-SAFETY YELLOW



Shown in 03-GREY and 15-SAFETY RED



7.5" with tapered transition ramp (Tread, double cavity)
Overall thickness: .18"

Visit us at www.SafeWayTractionStore.com

MASTER STOP™ Aluminum Tape Treads Advantages

Treads can be inlaid with any of the Master Stop® Anti-slip tapes

Our 2.75" tread is single cavity with one tape of your choice

Our 7.5" tread is a double cavity with two tapes of your choice

All treads come with pre-drilled counter-sunk holes

Before tread installation, surface must be level, smooth, dry and clean of debris

Commercial adhesive and fasteners should be used when installing the treads

With 4 distinct blacks and 12 assorted colors (including glow-in-the-dark), customizing to your exact needs is simple. The full line of Master Stop tapes is available for inlay—providing a variety of colors, grit materials and custom capabilities.



STANDARD
19- BLACK



01- WHITE



02- SC BLACK



03- GREY



04- BRICK RED



05- CLEAR



06- BROWN



07- BEIGE



08- SAFETY
YELLOW



14- HD BLACK



15- SAFETY
RED



17- BLK/YL
HAZARD



27-BLACK



28- GREY



50- GLOW

Sure-Foot Part #	Description	
427NT1	2.75" Aluminum Tape Tread	Specify color and length up to 144"
407NT2	7.5" Aluminum Tape Tread	Specify color and length up to 144"
Standard 19-BLACK, 01-WHITE, 02-SC BLACK, 03- GREY, 04-BRICK RED, 05-CLEAR, 06-BROWN, 07-BEIGE, 08-SAFETY YELLOW, 14-HD BLACK, 15-SAFETY RED, 17 BLK/YL HAZARD, 27-BLACK, 28-GREY, 50-GLOW		

MASTER STOP™ Aluminum Tape Treads are heat treated extruded 6063 T5 exterior grade aluminum inlaid with Master Stop mineral abrasive grit-coated polyester film.



Shown in 19-BLACK and 17-BLK/YL HAZARD

Visit us at www.SafeWayTractionStore.com