

TOP / VERTICAL

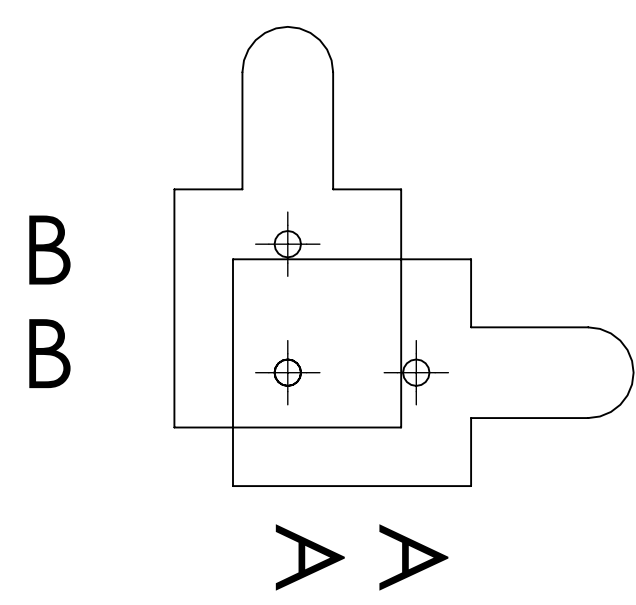
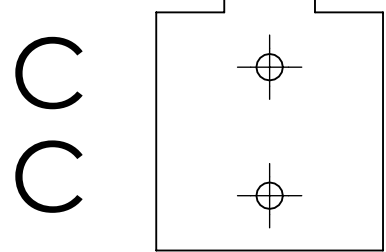
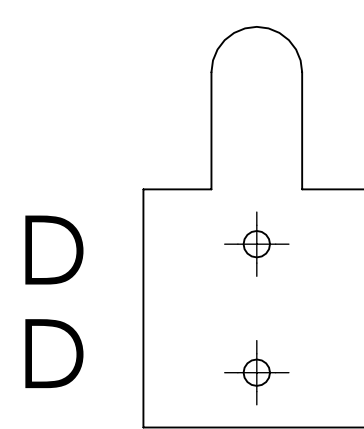
WALL TAPE  
POSITION



WALL TAPE  
POSITION

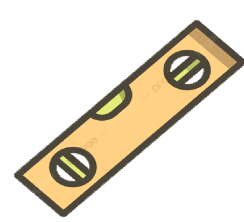


24" x 72"  
16" x 72"



VERTICAL MOUNT INSTRUCTIONS

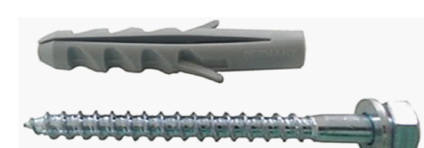
STEP 1 : Hang your template vertically on your wall  
Use a level to make sure that your template is positioned straight.



STEP 2 : For a vertical 16" x 72" format, mark and drill B and C holes  
For a vertical 24" x 72" format, mark and drill B and D holes



STEP 3 : Place the plastic anchors in wall instead of and fix the brackets



Step 4: Install your print on the wall by sliding the wall brackets into  
your print's brackets.

TOP / HORIZONTAL

24" x 72" & 16" x 72"

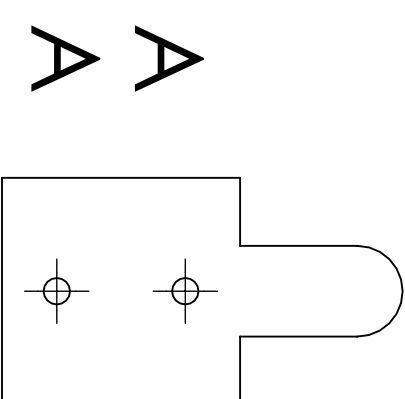
HORIZONTAL MOUNT INSTRUCTIONS

STEP 1 : Hang your template horizontally on your wall  
Use a level to make sure that your template is positioned straight.

STEP 2 : For a horizontal format, mark and drill the A holes

STEP 3 : Place the plastic anchors in wall instead of and fix the brackets

Step 4: install your print on the wall by sliding the wall brackets into  
your print's brackets.



WALL TAPE  
POSITION

