

mod. **GSD8**
single jet - super dry



Mod. GSD8

Getto unico, quadrante asciutto, lettura diretta su 8 rulli numeratori. Realizzato nelle versioni per acqua fredda (30° C) e calda (90° C) nei calibri \varnothing 15 e 20 mm (1/2" e 3/4"). Quadrante orientabile su 360°. Esclusi rischi di corrosione e sedimentazione. Garanzia di lunga durata ed elevata precisione.

Mod. GSD8

Single jet, dry dial, direct reading on 8 numerical rolls. Produced in the versions cold water (30° c) and hot water (90° C) in the diameters 15 and 20 mm (1/2"- 3/4"). Dial can rotate 360°. Risks of corrosion and sedimentation are excluded. Guaranteed long durability and elevated precision.

Mod. GSD8

Chorro único, cuadro seco, lectura directa sobre 8 rodillos numerados. Construido en las versiones para agua fría (30° C) y caliente (90° C) en los calibres \varnothing 15 y 20 mm (1/2" y 3/4"). Cuadro orientable a 360°. Excluidos los riesgos de corrosión y sedimentación. Garantía de larga duración y elevada precisión.

Mod. GSD8

Jet unique, cadran sec à lecture directe sur 8 rouleaux numériques, disponible en version eau froide (30°) ou eau chaude (90°C) eten 2 calibres 15 ou 20 mm (1/2" ou 3/4"), cadran orientable à 360°, exclus tous problèmes de corrosion et d'incrustation, fiabilité dans le temps et précision élevée.

Mod. GSD8

Einzelwasserstrahl, trockenes Ziffernblatt, Direktablesung auf 8 Zahlrollen. Produziert in den Versionen Kaltwasser (30 Grad) und Warmwasser (90 Grad) in den Durchmesser 15 und 20 mm (1/2 Zoll-3/4 Zoll). Um 360 Grad schwenkbares Ziffernblatt. Die Risiken von Rost und Ablagerungen sind ausgeschlossen. Garantiert lange Haltbarkeit und erhöhte Genauigkeit.

Мод. GSD8

Одноструйный, сухоходный, крыльчатый счётчик холодной (30°C) и горячей (90°C) воды, прямой считывание на 8 роликов. С диаметром условного прохода 15 или 20мм (1/2"– 3/4"). Вращаемый на 360° циферблат. Гарантия долговечности и высокой точности. Исключены риски коррозии и осаждения.

Caratteristiche tecniche - Technical features

Calibro Size	DN	mm in	15 (1/2")	20 (3/4")
Portata massima Max flow rate	Qmax	m ³ /h	3	5
Portata nominale Nominal flow rate	Qn	m ³ /h	1,5	2,5
Portata di transizione Transitional flow rate	Qt ±2%	l/h	120	200
Portata minima Min flow rate	Qmin ±5%	l/h	30	50
Letture minima Min reading		l	0,05	0,05
Letture massima Max reading		m ³	100.000	100.000
Pressione max di esercizio Max working pressure		bar	16	16

Classe B-H/A-V
Class B-H/A-V

Acqua fredda 0° - 30°C
Cold water 0° - 30°C

Acqua calda 30° - 90°C
Hot water 30° - 90°C

Trascinamento magnetico
Magnetic transmission

Quadrante orientabile su 360°
360° revolving dial

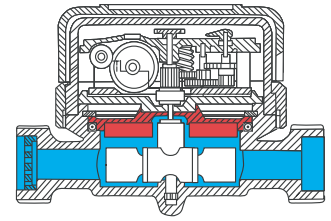
Piastra di tenuta antigelo su richiesta
Antifrost sealing plate on request

Orologeria superiore a tenuta
Water proof mechanism

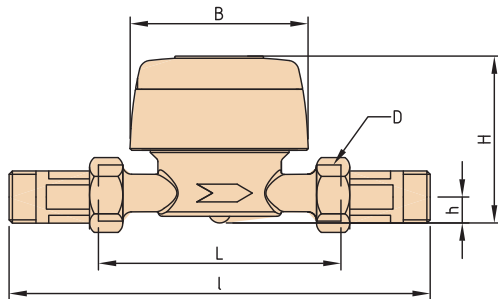
Letture in galloni imperiali su richiesta
Reading in imperial gallons on request

Coperchio su richiesta
Lid on request

Dispositivo antimagnetico su richiesta
Anti magnetic protection device on request



Dimensioni e pesi - Dimensions and weights



Calibro Size	mm in	15 1/2"	15 1/2"	15 1/2"	20 3/4"	
L	mm	80	110	115	130	
l	mm	160	190	195	228	
H	mm	73	73	73	73	
h	mm	18	18	18	18	
B	mm	85	85	85	85	
d	mm	3/4"	3/4"	7/8"-3/4"	1"	
Pesi Weights	con raccordi with unions	Kg	0,60	0,65	0,70	0,85
	senza raccordi without unions	Kg	0,45	0,50	0,55	0,60

Coperchio
Lid

Anello di chiusura
Sealing ring

Calotta trasparente
Transparent cup

Guarnizione tenuta
Holding gasket

Piastra di tenuta
Sealing plate

Turbina
Turbine

Guarnizione tenuta
Holding gasket

Filtro
Strainer

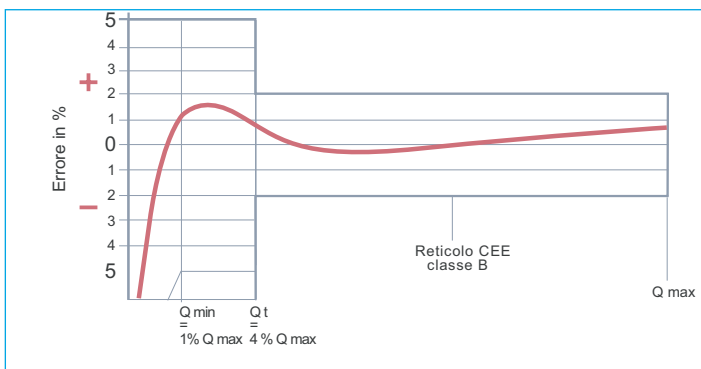
Orologeria
Totalising mechanism

Anello
Seeger

Perno di base
Pivot

Cassa ottone
Brass body

Curva tipica degli errori dei contatori a turbina Typical error curve of turbine meters



Curva delle perdite di carico dei contatori ø 15 e 20 mm Loss of head curve of ø 15 and 20 mm water meters

