



# TITAN HYDRO SLEEVE CATALOG

---



# B TITAN HYDRO-LOCK SLEEVES

## Hydro-Sleeves for Cutterhead Centering and Saw Sleeves

High precision, lower cost solution for centering insert cutterheads, spiral heads, and saw blades on production moulders, tenoners, and rip saws. CNC machined from high strength alloy steel for long wear life. Titan sleeves are dimensional matches to the popular ETP™ brand, and use a welded sleeve design. Custom size sleeves can be made to meet your special requirements.



The B type Hydro-Lock Sleeve is designed for interchangeable tool assembly which can easily be switched between the tools such as straight bore cutterheads, saw blades on moulders, tenoners, and rip saws.



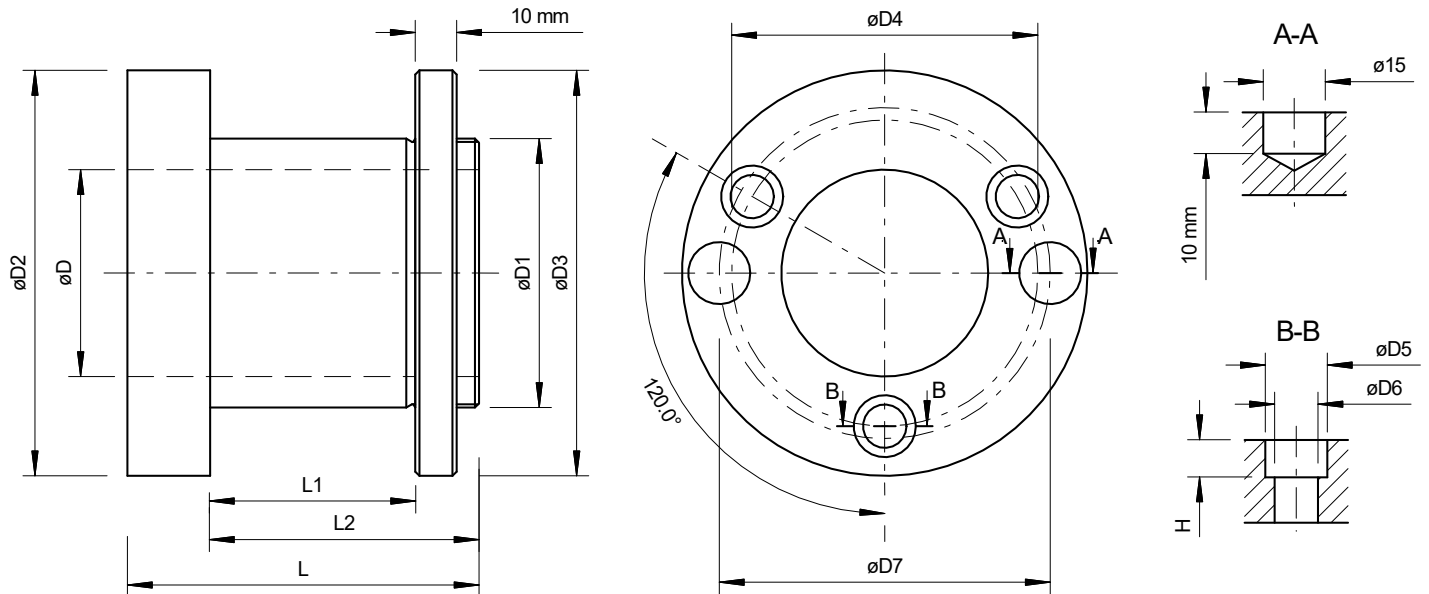
### Features:

- Welded structure is designed to reach to a high performance.
- Dimensional matches to the popular grips in the market.
- Max RPM: 9000 rpm
- Working Pressure: 400 – 450 bar
- Max Pressure: 500 bar

## Hydro-Lock Sleeves Type B --- Pressurized with a grease pump

Part #	D (Bore)	D1	D2	D3	D4	D5	D6	D7	H	L	L1	L2	Price
B:1-1/2"/50x85	1-1/2"	50	83	83	64	14	9	64	8.5	85	50	65	\$452.29
B:1-1/2"/50x135	1-1/2"	50	83	83	64	14	9	64	8.5	135	100	115	\$500.22
B:1-1/2"/50x185	1-1/2"	50	83	83	64	14	9	64	8.5	185	150	165	\$614.97
B:1-3/4"/65x85	1-3/4"	65	98	98	80	14	9	80	10	85	50	65	\$519.42
B:1-3/4"/65-115	1-3/4"	65	98	98	80	14	9	80	10	115	80	95	\$597.68
B:1-13/16"/60x75	1-13/16"	60	93	90	74	14	9	75	8.5	75	40	55	\$457.32
B:1-13/16"/60x115	1-13/16"	60	93	90	74	14	9	75	8.5	115	80	95	\$523.74
B:1-13/16"/60x140	1-13/16"	60	93	90	74	14	9	75	8.5	140	105	120	\$561.57
B:1-13/16"/60x190	1-13/16"	60	93	90	74	14	9	75	8.5	190	155	170	\$639.78
B:1-13/16"/65x85	1-13/16"	65	98	98	80	14	9	80	8.5	85	50	65	\$500.22
B:1-13/16"/65x135	1-13/16"	65	98	98	80	14	9	80	8.5	135	100	116	\$547.72
B:1-13/16"/65x185	1-13/16"	65	98	98	80	14	9	80	8.5	185	150	165	\$713.31
B:1-13/16"/65x235	1-13/16"	65	98	98	80	14	9	80	8.5	235	200	215	\$841.97
B:2-1/8"/65x85	2-1/8"	65	98	98	80	14	9	80	8.5	85	50	65	\$500.22
B:2-1/8"/65x135	2-1/8"	65	98	98	80	14	9	80	8.5	135	100	115	\$547.72
B:2-1/8"/65x185	2-1/8"	65	98	98	80	14	9	80	8.5	185	150	165	\$713.31
B:2-1/8"/65x235	2-1/8"	65	98	98	80	14	9	80	8.5	235	200	215	\$841.97
B:2-1/8"/65x270	2-1/8"	65	98	98	80	14	9	80	8.5	270	235	250	\$995.57

# B TITAN HYDRO-LOCK SLEEVES



## Hydro-Lock Sleeves Type B --- Pressurized with a grease pump

Part #	D (Bore)	D1	D2	D3	D4	D5	D6	D7	H	L	L1	L2	Price
B:40/50x75	40	50	83	83	64	10	6	65	5.5	75	40	55	\$457.82
B:40/50x115	40	50	83	83	64	10	6	65	5.5	115	80	95	\$481.14
B:40/50x140	40	50	83	83	64	10	6	65	5.5	140	105	120	\$507.78
B:40/50x165	40	50	83	83	64	10	6	65	5.5	165	130	145	\$564.38
B:40/50x190	40	50	83	83	64	10	6	65	5.5	190	155	170	\$620.98
B:40/60x75	40	60	93	90	74	14	9	75	8.5	75	40	55	\$467.82
B:40/60x95	40	60	93	90	74	14	9	75	8.5	95	60	75	\$504.44
B:40/60x115	40	60	93	90	74	14	9	75	8.5	115	80	95	\$539.40
B:40/60x140	40	60	93	90	74	14	9	75	8.5	140	105	120	\$581.02
B:40/60x165	40	60	93	90	74	14	9	75	8.5	165	130	145	\$620.98
B:40/60x215	40	60	93	90	74	14	9	75	8.5	215	180	195	\$740.86
B:50/60x75	50	60	93	90	74	14	9	75	8.5	75	40	55	\$461.16
B:50/60x95	50	60	93	90	74	14	9	75	8.5	95	60	75	\$487.79
B:50/60x115	50	60	93	90	74	14	9	75	8.5	115	80	95	\$531.08
B:50/60x140	50	60	93	90	74	14	9	75	8.5	140	105	120	\$569.37
B:50/60x190	50	60	93	90	74	14	9	75	8.5	190	155	170	\$649.29
B:50/60x230	50	60	93	90	74	14	9	75	8.5	230	195	210	\$779.14
B:50/60x240	50	60	93	90	74	14	9	75	8.5	240	205	220	\$799.13
B:50/59.96x75	50	59.96	93	90	74	14	9	75	8.5	75	40	55	-
B:50/59.96x95	50	59.96	93	90	74	14	9	75	8.5	95	60	75	-
B:50/59.96x115	50	59.96	93	90	74	14	9	75	8.5	115	80	95	-
B:50/59.96x140	50	59.96	93	90	74	14	9	75	8.5	140	105	120	-
B:50/59.96x190	50	59.96	93	90	74	14	9	75	8.5	190	155	170	-
B:50/59.96x230	50	59.96	93	90	74	14	9	75	8.5	230	195	210	-
B:50/59.96x240	50	59.96	93	90	74	14	9	75	8.5	240	205	220	-

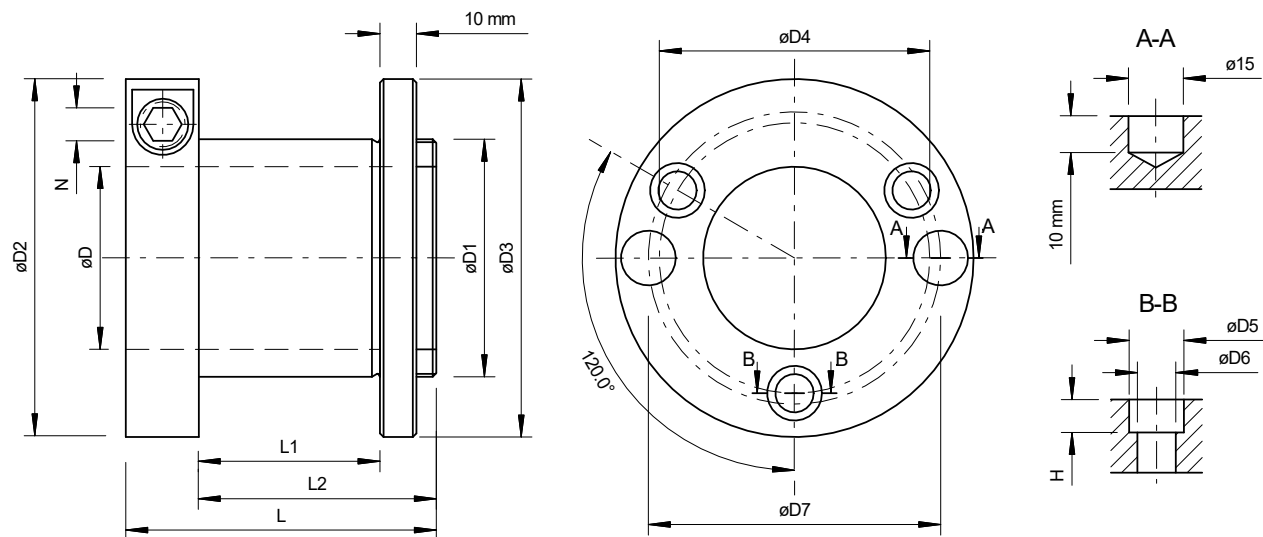
# BI TITAN HYDRO-LOCK SLEEVES



The BI type Hydro-Lock Sleeve is designed for interchangeable tool assembly which can easily be switched between the tools such as straight bore cutterheads, saw blades on moulders, tenoners, and rip saws.

#### Features:

- Welded structure is designed to reach to a high performance.
- Dimensional matches to the popular grips in the market.
- Max RPM: 9000 rpm
- Working Pressure: 400 – 450 bar



## Hydro-Lock Sleeves Type BI --- Pressurized with the Allen T-wrench

Part #	D (Bore)	D1	D2	D3	D4	D5	D6	D7	H	L	L1	L2	N	Price
BI:1-1/2"/50x85	1-1/2"	50	102	83	64	15	10.5	65	8.5	85	50	65	8	\$557.71
BI:1-1/2"/50x135	1-1/2"	50	106	83	64	15	10.5	65	8.5	135	100	115	8	\$607.67
BI:1-13/16"/60x75	1-13/16"	60	102	90	74	15	10.5	75	8.5	75	40	55	8	\$566.04
BI:1-13/16"/60x115	1-13/16"	60	108	90	75	15	10.5	75	8.5	115	80	95	8	\$672.59
BI:1-13/16"/65x85	1-13/16"	65	108	98	80	15	10.5	80	8.5	85	50	65	8	\$610.99
BI:1-13/16"/65x135	1-13/16"	65	117	98	80	15	10.5	80	8.5	135	100	116	8	\$660.95
BI:2-1/8"/65x85	2-1/8"	65	108	98	80	15	10.5	80	8.5	85	50	65	8	\$610.99
BI:2-1/8"/65x135	2-1/8"	65	117	98	80	15	10.5	80	8.5	135	100	115	8	\$660.95
BI:40/50x75	40	50	102	83	64	10	6	65	5.5	75	40	55	8	\$552.72
BI:40/50x115	40	50	106	83	64	10	6	65	5.5	115	80	95	8	\$579.35
BI:40/60x75	40	60	102	90	74	15	10.5	75	8.5	75	40	55	8	\$566.04
BI:40/60x90	40	60	108	90	74	15	10.5	75	8.5	90	60	75	8	\$602.67
BI:40/60x115	40	60	108	90	74	15	10.5	75	8.5	115	80	95	8	\$637.64
BI:50/60x75	50	60	102	90	74	15	10.5	75	8.5	75	40	55	8	\$559.38
BI:50/60x95	50	60	108	90	74	15	10.5	75	8.5	95	60	75	8	\$594.35
BI:50/60x115	50	60	108	90	74	15	10.5	75	8.5	115	80	95	8	\$629.31

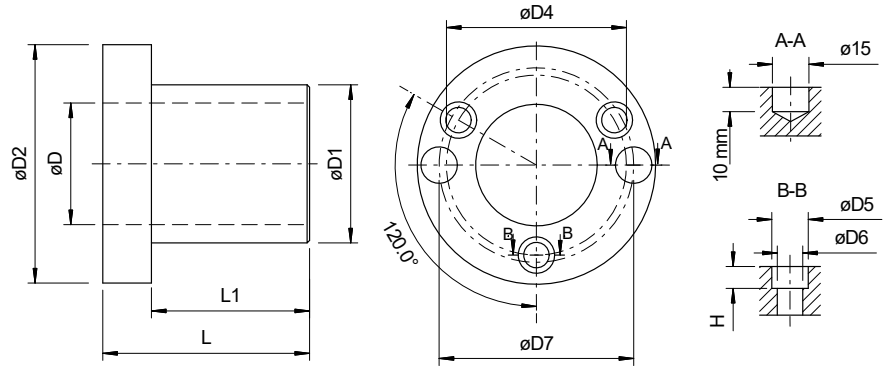
# C TITAN HYDRO-LOCK SLEEVES

The C type Hydro-Lock Sleeve is designed for interchangeable tool assembly which can easily be switched between the tools.



## Features:

- Welded structure is designed to reach to a high performance.
- Dimensional matches to the popular grips in the market.
- Max RPM: 9000 rpm, Working Pressure: 400 – 450 bar



## Hydro-Lock Sleeves Type C --- Pressurized with a grease pump

Part #	D (Bore)	D1	D2	D4	D5	D6	D7	H	L	L1	Price
C:1-1/2"/50x85	1-1/2"	50	83	64	15	10.5	64	8.5	85	65	\$447.85
C:1-1/2"/50x135	1-1/2"	50	83	64	15	10.5	64	8.5	135	115	\$497.77
C:1-1/2"/50x185	1-1/2"	50	83	64	15	10.5	64	8.5	185	165	\$610.99
C:1-13/16"/60x75	1-13/16"	60	93	74	15	10.5	75	8.5	75	55	\$454.50
C:1-13/16"/60x115	1-13/16"	60	93	74	15	10.5	75	8.5	115	95	\$522.76
C:1-13/16"/60x140	1-13/16"	60	93	74	15	10.5	75	8.5	140	120	\$562.70
C:1-13/16"/60x190	1-13/16"	60	93	74	15	10.5	75	8.5	190	170	\$640.95
C:1-13/16"/65x85	1-13/16"	65	98	80	15	10.5	80	8.5	85	65	\$501.12
C:1-13/16"/65x135	1-13/16"	65	98	80	15	10.5	80	8.5	135	115	\$551.05
C:1-13/16"/65x185	1-13/16"	65	98	80	15	10.5	80	8.5	185	165	\$715.87
C:1-13/16"/65x235	1-13/16"	65	98	80	15	10.5	80	8.5	235	215	\$847.41
C:2-1/8"/65x85	2-1/8"	65	98	80	15	10.5	80	8.5	85	55	\$497.77
C:2-1/8"/65x135	2-1/8"	65	98	80	15	10.5	80	8.5	135	115	\$547.74
C:2-1/8"/65x185	2-1/8"	65	98	80	15	10.5	80	8.5	185	165	\$714.22
C:2-1/8"/65x235	2-1/8"	65	98	80	15	10.5	80	8.5	235	215	\$845.73
C:40/50x75	40	50	83	64	10	6	65	5.5	75	55	\$447.85
C:40/50x115	40	50	83	64	10	6	65	5.5	115	95	\$471.15
C:40/50x140	40	50	83	64	10	6	65	5.5	140	120	\$496.12
C:40/50x165	40	50	83	64	10	6	65	5.5	165	145	\$554.40
C:40/50x190	40	50	83	64	10	6	65	5.5	190	170	\$610.99
C:40/60x75	40	60	93	74	15	10.5	75	8.5	75	55	\$454.50
C:40/60x95	40	60	93	74	15	10.5	75	8.5	95	75	\$484.47
C:40/60x115	40	60	93	74	15	10.5	75	8.5	115	95	\$522.76
C:40/60x140	40	60	93	74	15	10.5	75	8.5	140	120	\$561.04
C:40/60x165	40	60	93	74	15	10.5	75	8.5	165	145	\$599.32
C:40/60x215	40	60	93	74	15	10.5	75	8.5	215	195	\$712.55
C:50/60x75	50	60	93	74	15	10.5	75	8.5	75	55	\$454.50
C:50/60x95	50	60	93	74	15	10.5	75	8.5	95	75	\$484.47
C:50/60x115	50	60	93	74	15	10.5	75	8.5	115	95	\$522.76
C:50/60x140	50	60	93	74	15	10.5	75	8.5	140	120	\$561.04
C:50/60x190	50	60	93	74	15	10.5	75	8.5	190	170	\$640.95
C:50/60x230	50	60	93	74	15	10.5	75	8.5	230	210	\$772.49
C:50/60x240	50	60	93	74	15	10.5	75	8.5	240	220	\$792.45

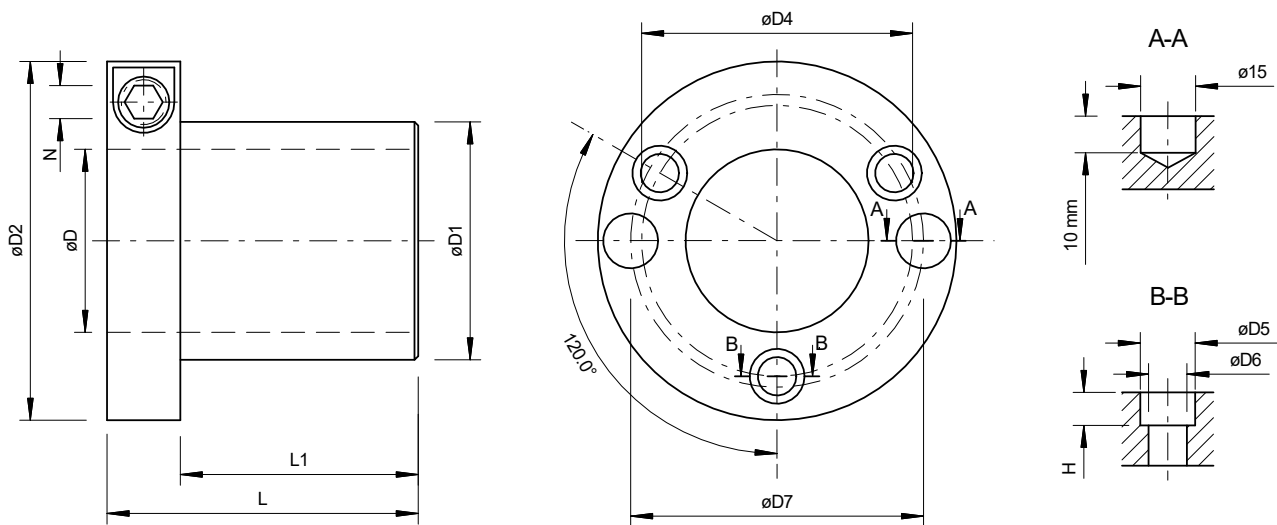
# CI TITAN HYDRO-LOCK SLEEVES



The CI type Hydro-Lock Sleeve is designed for interchangeable tool assembly which can easily be switched between the tools.

## Features:

- Welded structure is designed to reach to a high performance.
- Dimensional matches to the popular grips in the market.
- Max RPM: 9000 rpm
- Working Pressure: 400 – 450 bar
- Max Pressure: 500 bar



## Hydro-Lock Sleeves Type CI --- Pressurized with the Allen T-wrench

Part #	D (Bore)	D1	D2	D4	D5	D6	D7	H	L	L1	N	Price
CI:1-1/2"/50x85	1-1/2"	50	102	64	15	10.5	64	8.5	85	65	8	\$544.40
CI:1-1/2"/50x135	1-1/2"	50	102	64	15	10.5	64	8.5	135	115	8	\$594.35
CI:1-13/16"/60x75	1-13/16"	60	102	74	15	10.5	75	8.5	75	55	8	\$552.72
CI:1-13/16"/60x115	1-13/16"	60	108	74	15	10.5	75	8.5	115	95	8	\$619.33
CI:1-13/16"/65x85	1-13/16"	65	108	80	15	10.5	80	8.5	85	65	8	\$597.68
CI:1-13/16"/65x135	1-13/16"	65	117	80	15	10.5	80	8.5	135	115	8	\$647.62
CI:2-1/8"/65x85	2-1/8"	65	108	80	15	10.5	80	8.5	85	55	8	\$596.01
CI:2-1/8"/65x135	2-1/8"	65	117	80	15	10.5	80	8.5	135	115	8	\$645.95
CI:40/50x75	40	50	102	64	10	6	65	5.5	75	55	8	\$544.40
CI:40/50x115	40	50	106	64	10	6	65	5.5	115	95	8	\$569.37
CI:40/60x75	40	60	102	74	15	10.5	75	8.5	75	55	8	\$552.72
CI:40/60x95	40	60	108	74	15	10.5	75	8.5	95	75	8	\$582.69
CI:40/60x115	40	60	108	74	15	10.5	75	8.5	115	95	8	\$619.33
CI:50/60x75	50	60	102	74	15	10.5	75	8.5	75	55	8	\$552.72
CI:50/60x95	50	60	108	74	15	10.5	75	8.5	95	75	8	\$582.69
CI:50/60x115	50	60	108	74	15	10.5	75	8.5	115	95	8	\$619.33

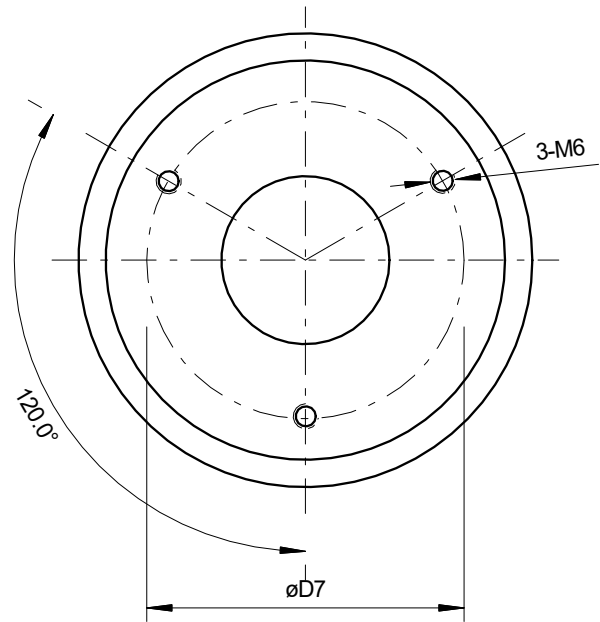
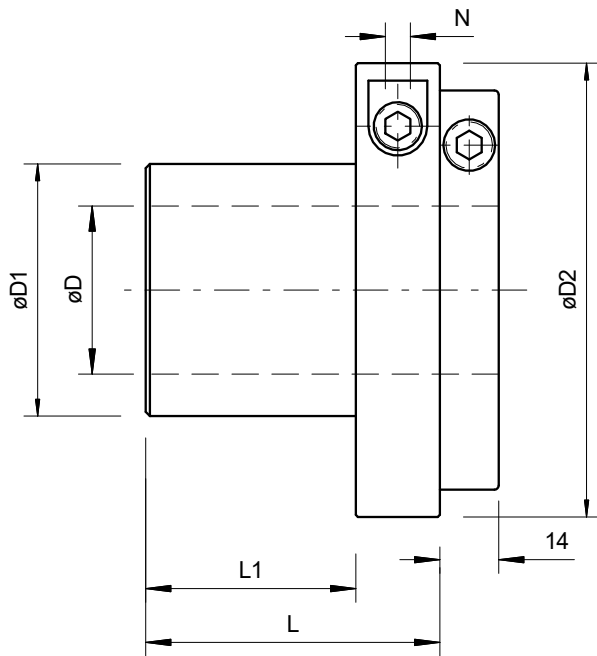
# CIL TITAN HYDRO-LOCK SLEEVES



The CIL type Hydro-Lock Sleeve is designed for interchangeable tool assembly which can easily be switched between the tools.

## Features:

- Supplied with a safety ring in aluminium.
- Welded structure is designed to reach to a high performance.
- Dimensional matches to the popular grips in the market.
- Max RPM: 9000 rpm
- Working Pressure: 400 – 450 bar
- Max Pressure: 500 bar



## Hydro-Lock Sleeves Type CIL --- Pressurized with the Allen T-wrench

Part #	D (Bore)	D1	D2	D7	L	L1	N	Price
CIL:40/60x55	40	60	100	75	55	35	6	\$541.07
CIL:40/60x70	40	60	108	75	70	50	6	\$594.35
CIL:40/60x90	40	60	108	75	90	70	6	\$614.32

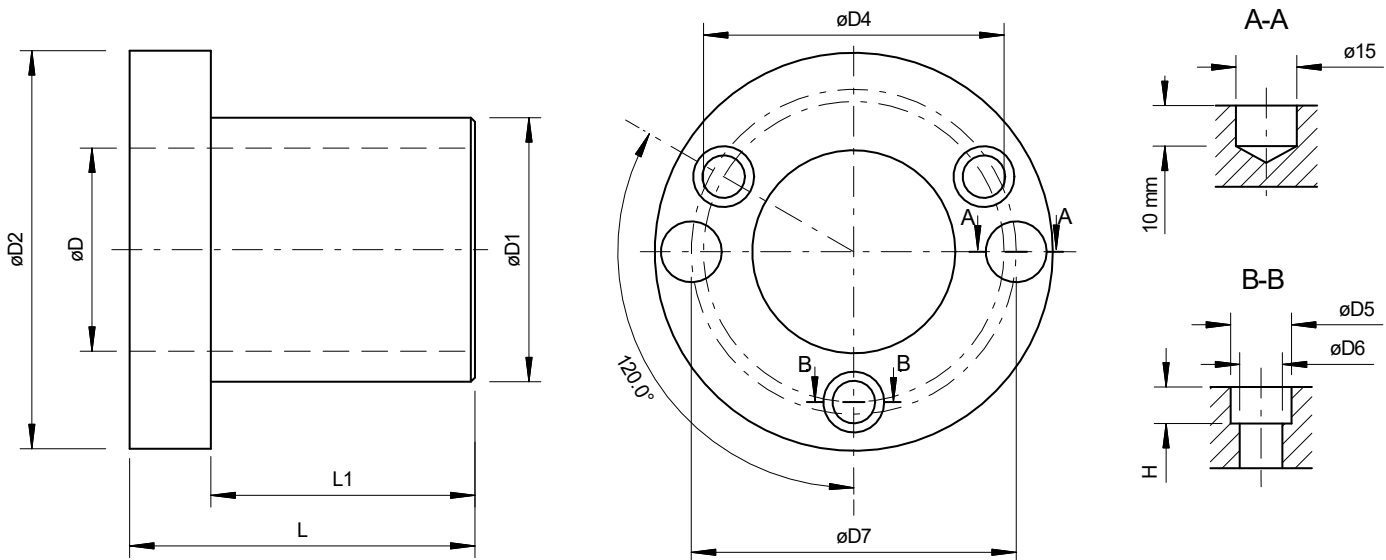
# A TITAN HYDRO-LOCK SLEEVES



The A type Hydro-Lock Sleeve is designed for permanent assembly for different kind of tools.

## Features:

- Welded structure is designed to reach to a high performance.
- Dimensional matches to the popular grips in the market.
- Max RPM: 9000 rpm
- Working Pressure: 400 – 450 bar
- Max Pressure: 500 bar



## Hydro-Lock Sleeves Type A --- Pressurized with a grease pump

Part #	D (Bore)	D1	D2	D4	D5	D6	D7	H	L	L1	Price
A:1-1/2"/50x55	1-1/2"	50	83	64	15	10.5	64	8.5	55	35	\$346.29
A:1-13/16"/60x55	1-13/16"	60	93	74	15	10.5	75	8.5	55	35	\$346.29
A:1-13/16"/65x55	1-13/16"	65	98	80	15	10.5	80	8.5	55	35	\$346.29
A:2-1/8"/65x55	2-1/8"	65	98	80	15	10.5	80	8.5	55	35	\$346.29
A:40/50x55	40	50	83	64	10	6	65	5.5	55	35	\$346.29
A:40/60x55	40	60	93	74	15	10.5	75	8.5	55	35	\$346.29
A:40/60x75	40	60	93	74	15	10.5	75	8.5	75	55	\$366.27
A:50/60x55	50	60	93	74	15	10.5	75	8.5	55	35	\$346.29
A:50/60x75	50	60	93	74	15	10.5	75	8.5	75	55	\$366.27



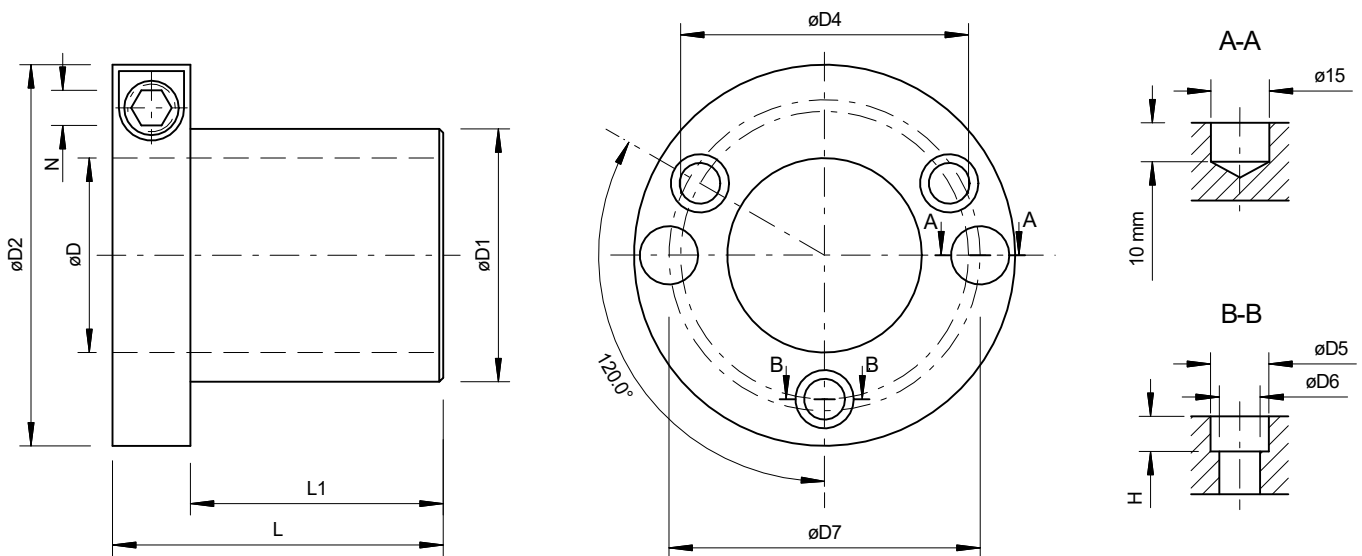
# AI TITAN HYDRO-LOCK SLEEVES



The AI type Hydro-Lock Sleeve is designed for permanent assembly for different kind of tools.

## Features:

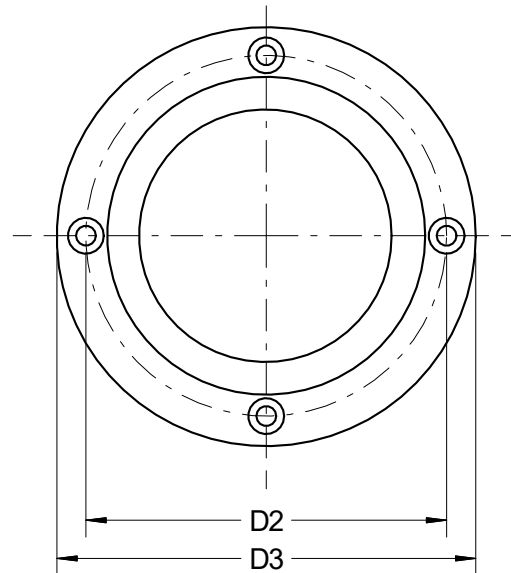
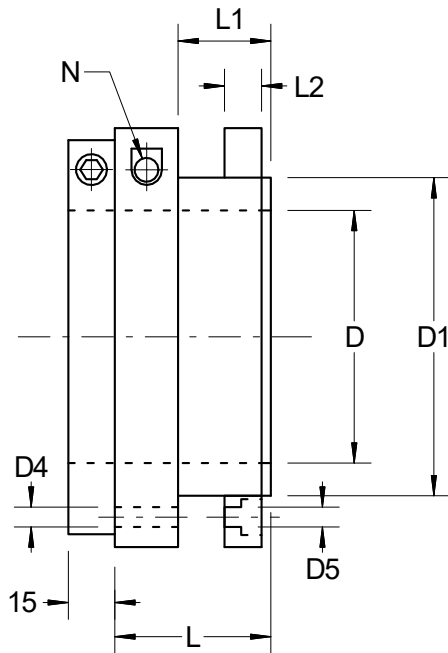
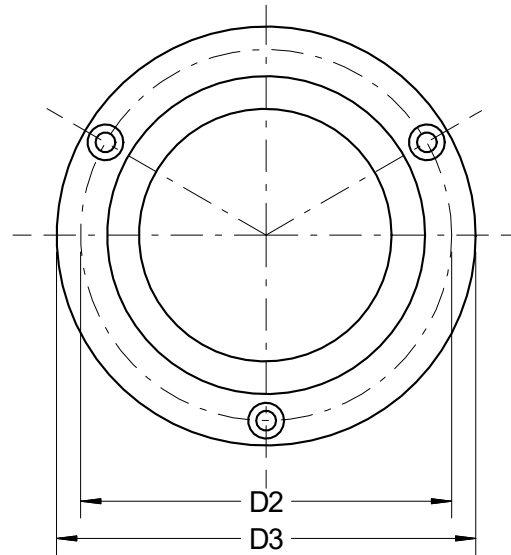
- Welded structure is designed to reach to a high performance.
- Dimensional matches to the popular grips in the market.
- Max RPM: 9000 rpm
- Working Pressure: 400 – 450 bar
- Max Pressure: 500 bar



## Hydro-Lock Sleeves Type AI --- Pressurized with the Allen T-wrench

Part #	D (Bore)	D1	D2	D4	D5	D6	D7	H	L	L1	N	Price
AI:1-1/2"/50x55	1-1/2"	50	83	64	14	9.5	64	8.5	55	35	6	\$431.18
AI:1-13/16"/60x55	1/13/16"	60	93	74	14	9.5	75	8.5	55	35	6	\$431.18
AI:1-13/16"/65x55	1/13/16"	65	98	80	14	9.5	80	8.5	55	35	6	\$431.18
AI:2-1/8"/65x55	2-1/8"	65	98	80	14	9.5	80	8.5	55	35	6	\$431.18
AI:40/50x55	40	50	83	64	10	6	65	5.5	55	35	6	\$431.18
AI:40/60x55	40	60	93	74	14	9.5	75	8.5	55	35	6	\$431.18
AI:40/60x75	40	60	93	74	14	9.5	75	8.5	75	55	6	\$447.85
AI:50/60x55	50	60	93	74	14	9.5	75	8.5	55	35	6	\$431.18
AI:50/60x75	50	60	93	74	14	9.5	75	8.5	75	55	6	\$447.85

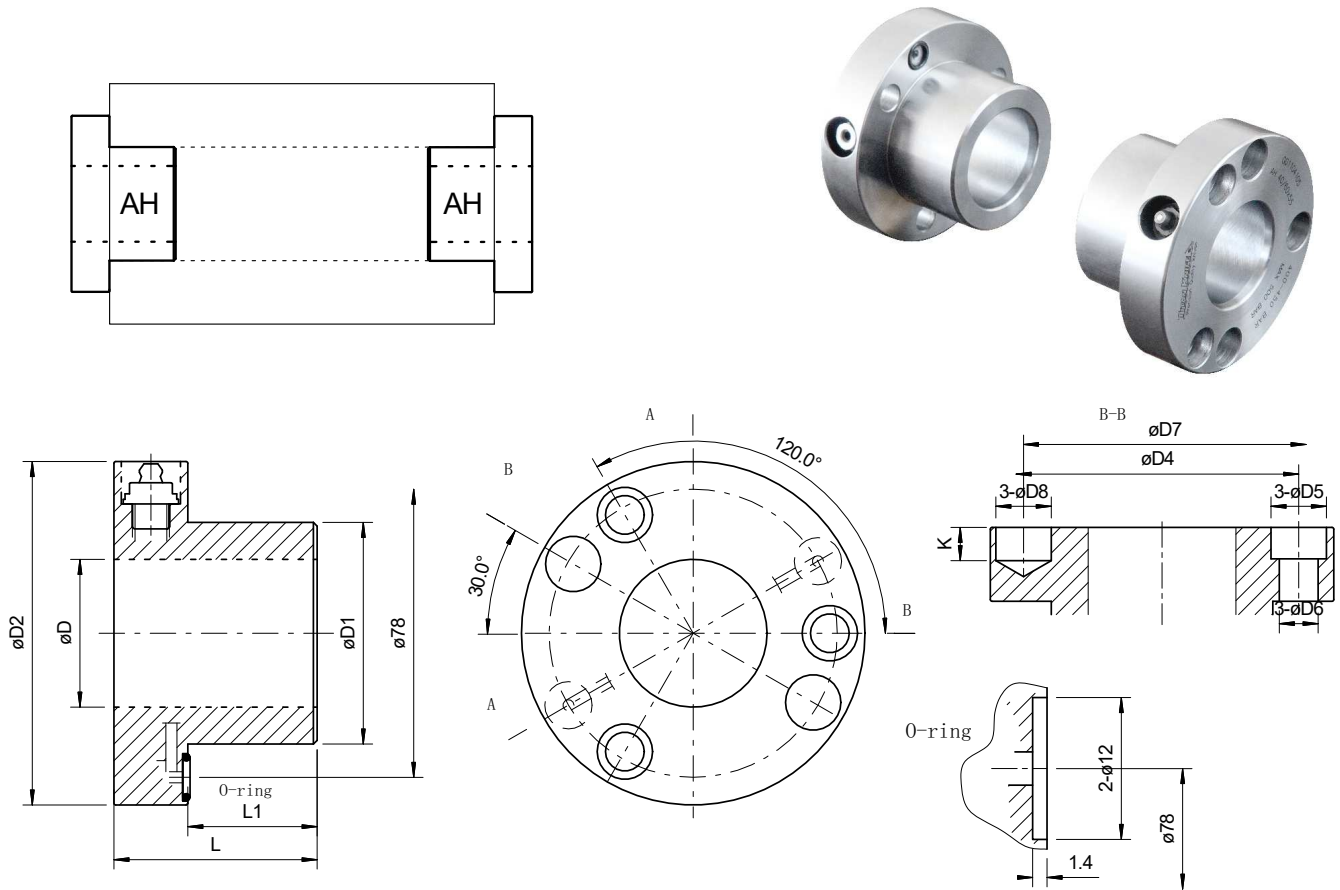
# AIL TITAN HYDRO-LOCK SLEEVES



## Hydro-Lock Sleeves Type AIL --- Pressurized with the Allen T-wrench

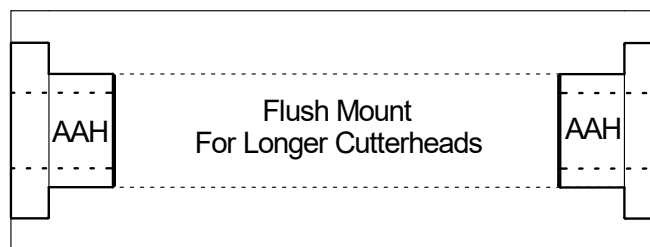
Part #	D (Bore)	D1	D2	D3	D4	D5	L	L1	L2	N	Price
AIL:60/80x50	60	80	97	113	3-M6	3-6.5	50	30	12	8	Call
AIL:80/100x50	80	100	117	113	4-M6	4-6.5	50	30	12	8	Call
AIL:100/120x50	100	120	137	153	4-M6	4-6.5	50	30	15	8	Call

# AH & AAH TITAN HYDRO-LOCK SLEEVES



## Hydro-Lock Sleeves Type AH --- Pressurized with a grease pump

Part #	D (Bore)	D1	D2	D4	D5	D6	D7	D8	D9	H	K	L	L1	Price
AH:1-1/2"/60x55	1-1/2"	60	93	74	15	10.5	75	15	78	8.5	9	55	35	\$403.12
AH:1-13/16"/60x55	1-13/16"	60	93	74	15	10.5	75	15	78	8.5	9	55	35	\$403.12
AH:40/60x55	40	60	93	74	15	10.5	75	15	78	8.5	9	55	35	\$403.12
AH:50/60x55	50	60	93	74	15	10.5	75	15	78	8.5	9	55	35	\$403.12



## Hydro-Lock Sleeves Type AAH --- Pressurized with a grease pump

Part #	D (Bore)	D1	D2	D4	D5	D6	D7	D8	D9	H	K	L	L1	Price
AAH:1-1/2"/60x75	1-1/2"	60	96	74	15	10.5	75	15	78	8.5	10	75	45	\$403.12
AAH:1-13/16"/60x75	1-13/16"	60	96	74	15	10.5	75	15	78	8.5	10	75	45	\$403.12
AAH:40/60x75	40	60	96	74	15	10.5	75	15	78	8.5	10	75	45	\$403.12
AAH:50/60x75	50	60	96	74	15	10.5	75	15	78	8.5	10	75	45	\$403.12

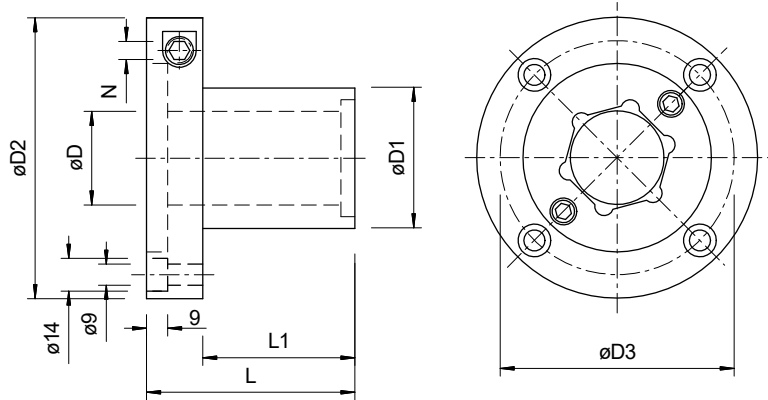
# EIA & EIB TITAN HYDRO-LOCK SLEEVES

The EIA type Hydro-Lock Sleeve is designed for permanent tool assembly and machines with hexagonal spindle profile.



**Features:**

- Welded structure is designed to reach to a high performance.
- Supplied with an internal hexagonal insert in the collar of the sleeve.
- Dimensional matches to the popular applications in the market.
- Max RPM: 9000 rpm
- Working Pressure: 400 – 450 bar
- Max Pressure: 500 bar



## Hydro-Lock Sleeves Type EIA --- Pressurized with the Allen T-wrench

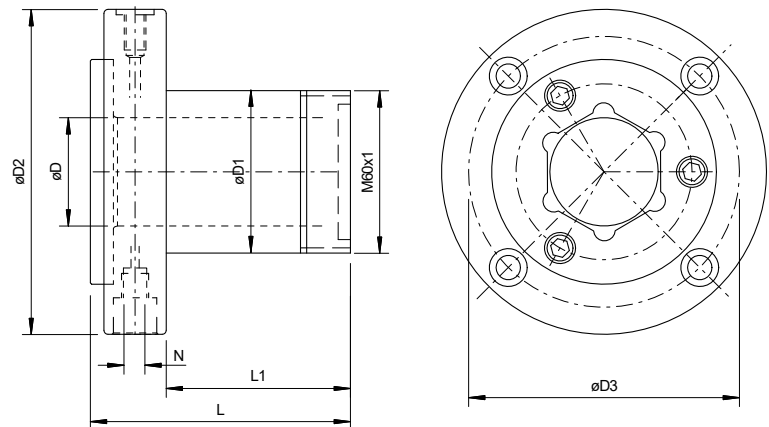
Part #	D (Bore)	D1	D2	D3	L	L1	N	Price
EIA:40/60x92	40	60	120	100	92	68	6	\$596.01

The EIB type Hydro-Lock Sleeve is designed for interchangeable tool assembly and machines with hexagonal spindle profile.



**Features:**

- Welded structure is designed to reach to a high performance.
- Supplied with an internal hexagonal insert in the collar of the sleeve.
- Dimensional matches to the popular applications in the market.
- Max RPM: 9000 rpm
- Working Pressure: 400 – 450 bar
- Max Pressure: 500 bar



## Hydro-Lock Sleeves Type EIB --- Pressurized with the Allen T-wrench

Part #	D (Bore)	D1	D2	D3	D4	L	L1	N	Price
EIB:40/60x92	40	60	120	100	105	96	68	6	\$612.67

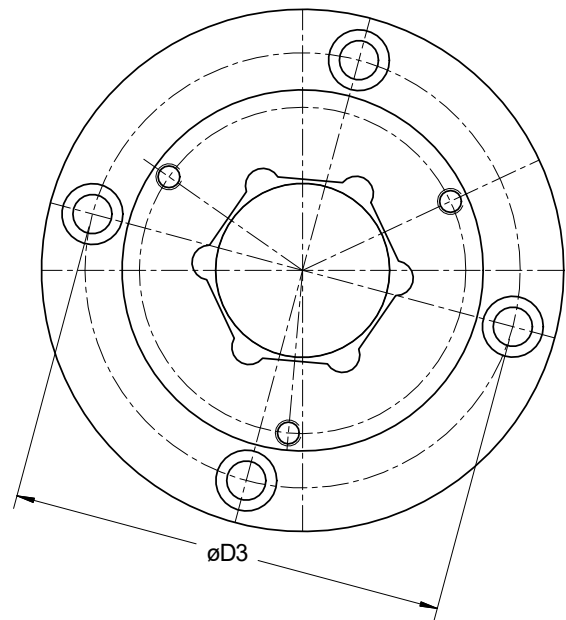
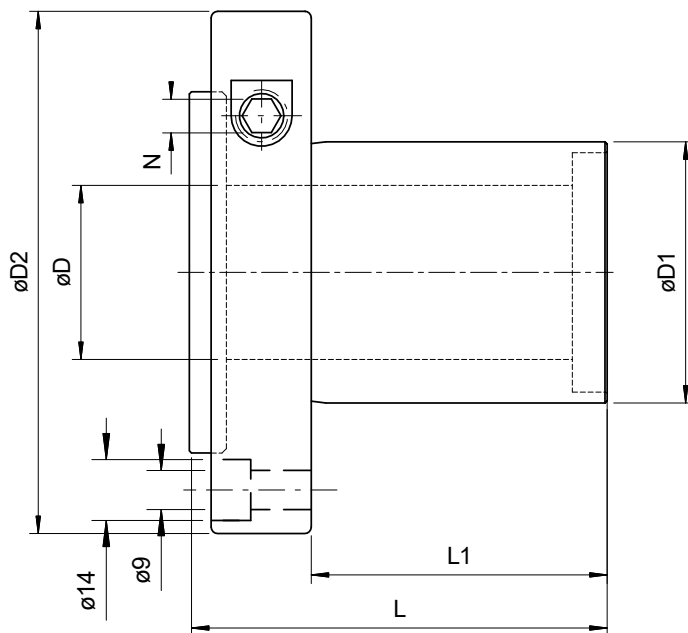
# EIC TITAN HYDRO-LOCK SLEEVES



The EIC type Hydro-Lock Sleeve is designed for interchangeable tool assembly and machines with hexagonal spindle profile.

## Features:

- Welded structure is designed to reach to a high performance.
- Supplied with an internal hexagonal insert in the collar of the sleeve.
- Dimensional matches to the popular applications in the market.
- Max RPM: 9000 rpm
- Working Pressure: 400 – 450 bar
- Max Pressure: 500 bar



## Hydro-Lock Sleeves Type EIC --- Pressurized with the Allen T-wrench

Part #	D (Bore)	D1	D2	D3	D4	L	L1	N	Price
EIC:40/60x96	40	60	120	100	105	96	68	6	\$596.01

# HIGH PRESSURE GREASE GUN - NEWEST MODEL



## Wanner Model 32391 Offers Best Reliability:

The newest Swiss made high pressure grease gun has an operating pressure of 600 bar and are used to pressurize hydro-locking heads and sleeves. Model 32391 has a center filtered aspiration valve, replaceable pressure valve seat, 1,000 bar pressure hose, improved pressure release valve, lighter weight plastic handle, and more. Spare replacement parts for the older and new version pumps are also available.

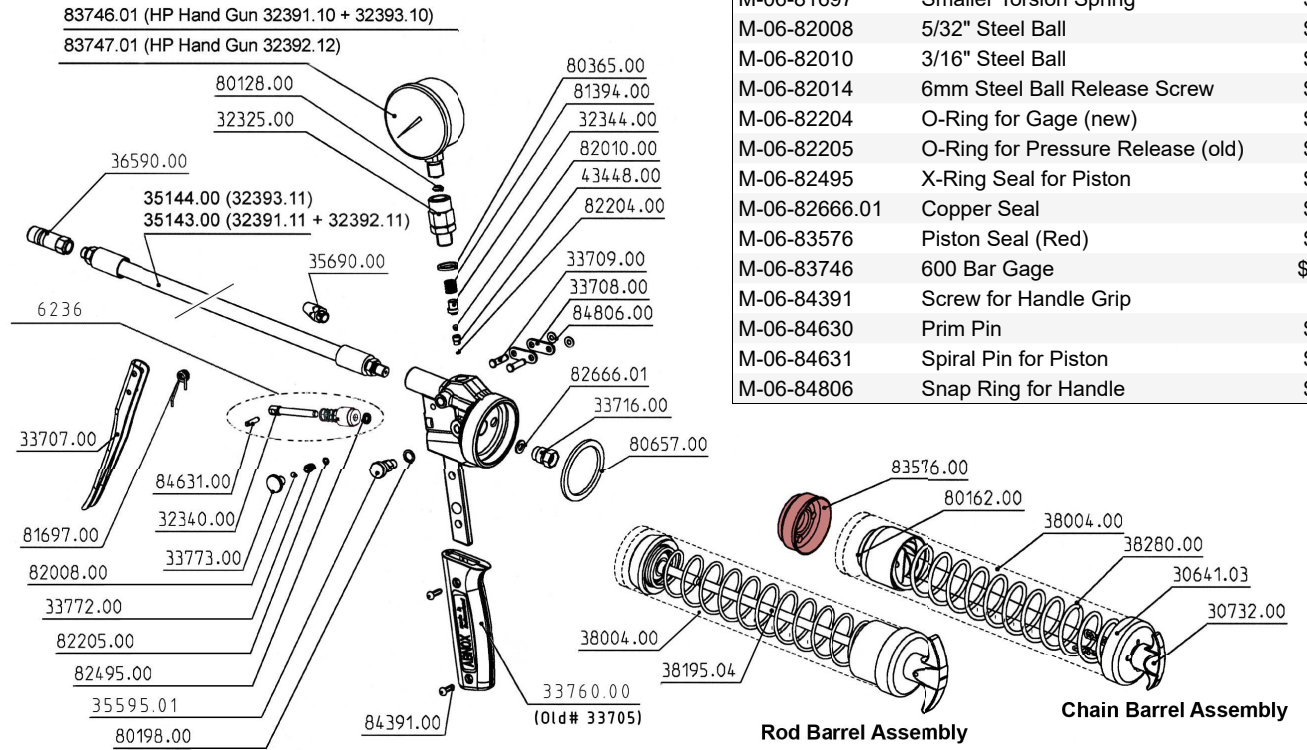


600 Bar Model Grease Gun		
Description	Part #	Price
Wanner Pump w/ Rod Barrel	M-06-32391.21	\$467.07
Wanner Pump w/ Chain Barrel	M-06-32391.20	\$501.67
Spare Parts Kit - Rod Style 33758, 36590, 38146, 43448, 80657, 81697, 82010, 82204, 82495, 83398, 84808	M-06-33795	\$51.18
Spare Parts Kit - Chain Style 36590, 80657, 43448, 2pcs of 82205, 82495, 83576, 82008, 33772, 33773	M-06-33796	\$51.18
Rod Barrel Assembly	M-06-38195.04	\$55.87
Chain Barrel Assembly	M-06-38280.05	\$92.20
Valve Head Complete w/ Gage (Upgrade Your Old Head)	M-06-33731.00-N	\$411.37
Jet Lube - 14 oz. Plastic Tube	M-06-F-01	\$21.72
High Pressure Grease Tube		



## Spare Parts for Newest Pump (32391)

Part #	Description	Price
M-06-6236	Piston Kit with Spring & Seal	\$46.69
M-06-32308.01	Pressure Release Screw	\$6.34
M-06-32325	Rotary Coupling	\$29.00
M-06-32340	Piston	\$19.46
M-06-32344	Valve Pin	\$3.39
M-06-33707	Lever	\$5.76
M-06-33708	Link Plate	\$2.03
M-06-33709	Bolt for Lever / Link Plate	\$2.59
M-06-33716	Non-Return Valve	\$17.29
M-06-33731.00-N	New Valve Head	\$411.37
M-06-33758	Pres. Rel. Valve Kit (Fixes Leaking Pressure at Thumb Screw)	\$25.22
M-06-33760.00	Plastic Handle - Complete	\$11.82
M-06-33772	Special Valve Seat for Pre. Rel.	\$16.84
M-06-33773	Special M8 Short Pre. Screw Rel.	\$12.11
M-06-35143.00	12" Hose 1,000 Bar Rated (standard)	\$58.47
M-06-35144.00	20" Hose - Heavy Duty (upgrade)	\$60.54
M-06-35595.01	Air Release Valve	\$9.38
M-06-35690	Filler Cap	\$5.84
M-06-36590	Hydraulic Connector	\$12.23
M-06-38004	Barrel - Steel Tube Only	\$28.48
M-06-38195	Rod Barrel w/ Steel Tube	\$88.95
M-06-38195.04	Rod Barrel Inside Parts	\$55.87
M-06-43448	Valve Seat	\$11.17
M-06-80128	Brass Crush Washer	\$3.23
M-06-80198	Cu-Joint Seal	\$2.74
M-06-80365	Brass Washer	\$2.74
M-06-80657	Barrel Seal - Flat O-Ring	\$3.60
M-06-81394	Bigger Pressure Spring	\$2.52
M-06-81697	Smaller Torsion Spring	\$1.44
M-06-82008	5/32" Steel Ball	\$1.01
M-06-82010	3/16" Steel Ball	\$1.01
M-06-82014	6mm Steel Ball Release Screw	\$1.88
M-06-82204	O-Ring for Gage (new)	\$1.47
M-06-82205	O-Ring for Pressure Release (old)	\$1.47
M-06-82495	X-Ring Seal for Piston	\$2.95
M-06-82666.01	Copper Seal	\$1.17
M-06-83576	Piston Seal (Red)	\$7.14
M-06-83746	600 Bar Gage	\$87.61
M-06-84391	Screw for Handle Grip	N/A
M-06-84630	Prim Pin	\$1.30
M-06-84631	Spiral Pin for Piston	\$1.07
M-06-84806	Snap Ring for Handle	\$0.71



# GREASE FITTINGS, SPACERS & SAFETY LOCK COLLARS



### Metric Zerc Grease Inlet Fitting

High Pressure Valve. Fits hydro-sleeves and hydro-heads.

(New Style: Built-in rubber O-Ring seal)

Part # MH-GF-600-N \$11.88



### Metric Zerc Grease Release Valve

High Pressure Valve. Fits hydro-sleeves and hydro-heads.

(New Style: Built-in rubber O-Ring seal)

Part # MH-RV-600-N \$11.06

## Saw Index Fillers / Spacers

Thickness	Bore x Dia.	Part #	Price
1/16"	50mm x 83mm	Spacer-D-50/83-1/16	\$20.66
1/16"	60mm x 93mm	Spacer-D-60/93-1/16	\$20.66
1/16"	65mm x 98mm	Spacer-D-65/98-1/16	\$20.66
1/8"	50mm x 83mm	Spacer-D-50/83-1/8	\$24.80
1/8"	60mm x 93mm	Spacer-D-60/93-1/8	\$24.80
1/8"	65mm x 98mm	Spacer-D-65/98-1/8	\$24.80
1/4"	50mm x 83mm	Spacer-D-50/83-1/4	\$28.92
1/4"	60mm x 93mm	Spacer-D-60/93-1/4	\$28.92
1/4"	65mm x 98mm	Spacer-D-65/98-1/4	\$28.92
1/2"	50mm x 83mm	Spacer-D-50/83-1/2	\$33.06
1/2"	60mm x 93mm	Spacer-D-60/93-1/2	\$33.06
1/2"	65mm x 98mm	Spacer-D-65/98-1/2	\$33.06
1"	50mm x 83mm	Spacer-D-50/83-1	\$41.33
1"	60mm x 93mm	Spacer-D-60/93-1	\$41.33
1"	65mm x 98mm	Spacer-D-65/98-1	\$41.33
1/4" Nut	50mm x 83mm	Spacer-D-50/83-Nut	\$33.06
1/4" Nut	60mm x 93mm	Spacer-D-60/93-Nut	\$33.06
1/4" Nut	65mm x 98mm	Spacer-D-65/98-Nut	\$33.06

Steel spacers for the hydro-sleeves to allow indexing rip saws apart or to fill excess sleeve capacity. Spacer nuts have 3 bolt holes with 3/8" NC threads. Index spacers are drilled for (3) 10.5mm holes.



## Safety Lock Collars

Lock Collar Bore Dia.	Part #	Price
1-1/2"	LC150	\$123.96
1-13/16"	LC1813	\$123.96
2-1/8"	LC2125	\$123.96
40mm	LC40M	\$123.96
50mm	LC50M	\$123.96
1-1/2"	LC150-R	\$123.96
1-13/16"	LC1813-R	\$123.96
2-1/8"	LC2125-R	\$123.96
40mm	LC40-R	\$123.96
50mm	LC50-R	\$123.96

R = Round

# HYDRO SLEEVE ASSEMBLY, USER & SAFETY INSTRUCTIONS



## Assembly & User Instruction Guide:

1. Install saws, spacers, cutter-heads etc. onto the shank of the hydro-sleeve so that the sleeve capacity is full and so the retaining nut tightens against the tooling securely. Do not tighten the three nut set screws until step #2 below (it can prevent the tool from centering correctly on the sleeve).
2. Place the hydro-sleeve on a grinding arbor and pressurize the sleeve to about 250 to 300 bar to center the tooling on the hydro-sleeve shank. Be sure the pressure release valve set screw is tight. Now tighten the three setscrews on the nut into the tooling to ensure the tooling is secure. For thin kerf saws we recommend you use drive bolts (3/8"NC) to secure the saws and spacers from spinning on the hydro-sleeve shank if a jamb up should occur. To remove the sleeve release the pressure by loosening the pressure release valve set screw – wipe away excessive grease.
3. Install the hydro-sleeve on the machine spindle; be sure the spindle is clean and free of grease. If the hydro-sleeve won't fit onto the spindle, be sure you loosen the pressure release valve set screw to remove any pressure contained in the sleeve from warming. The sleeve can be mounted in any position so long as it is captured by a safety lock collar or two lock rings if you mount it away from the base of the spindle. Pressurize the hydro-sleeve using a high pressure grease pump to the 350 to 400 bar, or the pressure indicated on the sleeve. Be sure to re-check the pressure at least once per day.



We recommend you use grease that is top rated (NLGI Grade 2 or 3) for high temperature (over 350° F) and high pressure. Jet Lube EP lithium complex grease (0° to 550°F) is offered in 14 oz (400g) plastic tubes to fit the Wanner high pressure grease pump – order using part # M-06-F.

We recommend the hydro-sleeve is pressurized on the grinding arbor then resharpening the tool to receive the maximum benefit of the hydro-sleeve and to improve tools cutting concentricity.

## Safety Instructions:

- Maximum RPM is 9000 rpm.
- Be sure to check the pressure in the sleeve at regular intervals, once a day in the morning when the temperature is cool to ensure pressure is maintained.
- Always use a back up safety lock collar to lock and drive the hydro-sleeve in the unlikely event of a pressure loose.
- Be sure the spindle diameter is not worn under size. Spindle diameters must be maintained to with no more than .0015" wear to ensure proper hydro-sleeve grip on the spindle. Avoid mounting the bore of the sleeve over keyways and threads which can deform the bore of the sleeve.
- Never pressurize any hydro-sleeve without first placing it on a full size spindle or grinding arbor.



# SELF PRESSURIZING HEAD & SLEEVE INSTRUCTIONS



- No Grease Pump Required
- Precise, Quick & Simple to use with no messy grease
- Piston Pressure Design



## Easy Lock User Guide:

The Easy Lock hydro-lock system allows the cutter-head or hydro-sleeve to be pressurized with-out using a high pressure grease pump. The sealed pressure bladder is pressurized by tightening the allen bolt across from the grease nipple until it stops tight. This screw pushes a piston of grease into the bore sleeve causing the bore to shrink on tight to the machine spindle. NOTE: do not tighten the pressurizing bolt unless the head is on the machine spindle or grinding arbor to avoid deforming the bore of the head. Follow the simple steps to pressurize the head:

1. Position the head on the machine spindle in the correct position.
2. Using an 8mm hex wrench, tighten the pressure screw until it stops tight.
3. To de-pressurize the head simply loosen the pressure screw and remove the head.



**Important!** - Oil the pressure screw threads monthly when head is in use to prevent thread galling / damage. Use an oil thread lubricant such as Never Seez. Do NOT use WD-40.

## Hydro-Head Precautions / Safety Instructions:

- Always check the pressure of the heads each morning if the heads are left overnight to be sure the pressure is maintained.
- Always use safety lock collars as a backup mechanical device to drive the head in the event of pressure loss.
- Always be sure the spindle diameter is not excessively worn more than .002" under the nominal size to prevent bore slippage.
- Heads are pre-calibrated for use between 35 degrees and 110 degrees Fahrenheit.

To re-pressurize the Easy Lock heads in the event of a grease fitting change out or sleeve replacement. First place the head on the machine spindle, second tighten the pressure screw until it is fully tightened, then using a high pressure grease pump fill the head to 325 Bar (4750 p.s.i.) using the grease nipple. The head is now fully re-pressurized. Loosen the pressure screw to remove the head from the spindle. After re-charging the pressure system we recommend the head be pressure tested over night to inspect for slow grease leaks. The Easy-Lock design is proven reliable in our lab tests which pressurized the system over 25,000 times without failure or pressure loss. This simulates 35 years of typical use.



# SPLITTER SAWS & RADIUS EASED EDGE CUTTERS

## Splitter Saw & Radius Eased Edge Cutters For Moulders

### "Splitter Heads" Rip, Groove, and Surfacing in One Pass

Don't have enough spindles? We offer custom made heads that can combine a moulder head and a carbide tipped saw to allow you to rip stock and surface on the same spindle, or allow you to ease edges and rip for square production. Also commonly used to cut a weather strip groove without the hassle of breaking moulder knife splitters - 0-deg. radial carbide tip saws cut smooth grooves and last thousands of feet longer. Call for prices and details for your specific application. We can provide good solutions for nearly any product run.



Splitter Saws (Rip Saws)										
Dia.	Kerf	Plate	Bore	Teeth	Tooth Type	Bolt Holes	Bolt Circle	Part #	Price	
165mm	4mm	3.0mm	1-1/2"	12	Flat Top	3 Bolt Holes 10.5mm Dia.	64mm	Saw SB-1651238	\$69.19	
			40mm	12	Flat Top	3 Bolt Holes 10.5mm Dia.	64mm	Saw SB-1651240	\$69.19	
			1-13/16"	12	Flat Top	3 Bolt Holes 10.5mm Dia.	64mm	Saw SB-1651246	\$69.19	
180mm	2.8mm	2.0mm	50mm	24	Triple Chip	3 Bolt Holes 10.5mm Dia.	64mm	Saw SB-18050	\$113.66	
			60mm	24	Triple Chip	3 Bolt Holes 10.5mm Dia.	74mm	Saw SB-18060	\$113.66	
			65mm	24	Triple Chip	3 Bolt Holes 10.5mm Dia.	80mm	Saw SB-18065	\$113.66	
200mm	1.8mm	1.2mm	65mm	42	Triple Chip	3 Bolt Holes 10.5mm Dia.	80mm	Saw-P200Z421865	\$184.50	
200mm	2.6mm	1.88mm	65mm	48	Triple Chip	3 Bolt Holes 10.5mm Dia.	80mm	Saw-P200Z482563	\$127.69	
			2.813"	48	Triple Chip	3 Bolt Holes 10.5mm Dia.	80mm	Saw-P200Z4821825	\$127.69	
200mm	2.8mm	2.0mm	50mm	24	Triple Chip	3 Bolt Holes 10.5mm Dia.	64mm	Saw SB-20050	\$113.66	
			65mm	24	Triple Chip	3 Bolt Holes 10.5mm Dia.	80mm	Saw SB-20065	\$113.66	

Contact us regarding tooling to put eased edges on the opposite side of materials.



A typical assembly includes a Titan hydro sleeve, saw, eased edge cutters, spacers, and bolts.

Refer to catalog pages for sleeves and spacers



## 0.125" Radius Eased Edge Cutters RH & LH

	Diameter	Width	Bore	Teeth	Part #	Price
Left Hand	120mm	4.75mm	65mm	8	Saw SB-S001	\$163.11
Right Hand	120mm	4.75mm	65mm	8	Saw SB-S002	\$163.11
Left Hand	120mm	4.75mm	50mm	8	Saw SB-S003	\$163.11
Right Hand	120mm	4.75mm	50mm	8	Saw SB-S004	\$163.11
Left Hand	5.684"	4.75mm	65mm	8	Saw SB-S005	\$210.87
Right Hand	5.684"	4.75mm	65mm	8	Saw SB-S006	\$210.87

**Warning:** The use of splitter saws on moulders requires you to have anti-kickback devices installed to prevent possible injury to the infeed operator.





**Global Tooling & Supply LLC**  
950 International Way  
Springfield, OR 97477  
**Phone:** (541) 302-1366  
**Fax:** (541) 246-3116  
[www.globaltooling.com](http://www.globaltooling.com)

## PRODUCT CATEGORIES

MOULDER TOOLING  
PLANER AND JOINTER TOOLING  
HIGH PRODUCTION PLANER KNIVES  
GRINDING ROOM SUPPLIES  
SAW BLADES  
AND MORE

[www.globaltooling.com](http://www.globaltooling.com)



**BURTON**  
MILL SOLUTIONS



Burton Mill Solutions  
[burtonmill.com](http://burtonmill.com)

Simonds International  
[simondsint.com](http://simondsint.com)

B.G.R. Saws  
[bgrsaws.com](http://bgrsaws.com)

Cut Technology  
[cuttech.com](http://cuttech.com)

Wright Machine Tools  
[wrightmachinetools.com](http://wrightmachinetools.com)

US Blades  
[usblades.net](http://usblades.net)

© 2023 Global Tooling & Supply LLC. All Rights Reserved.