

HOW TO IDENTIFY AUTHENTICITY



What to look for:

- 1 Return Wire tip
- 2 Glass Tip cutting
- 3 Shape of center arc
- 4 Small System code & Dimple mark
- 5 Base cover open gap
- 6 Plug terminal
- 7 Body
- 8 Label

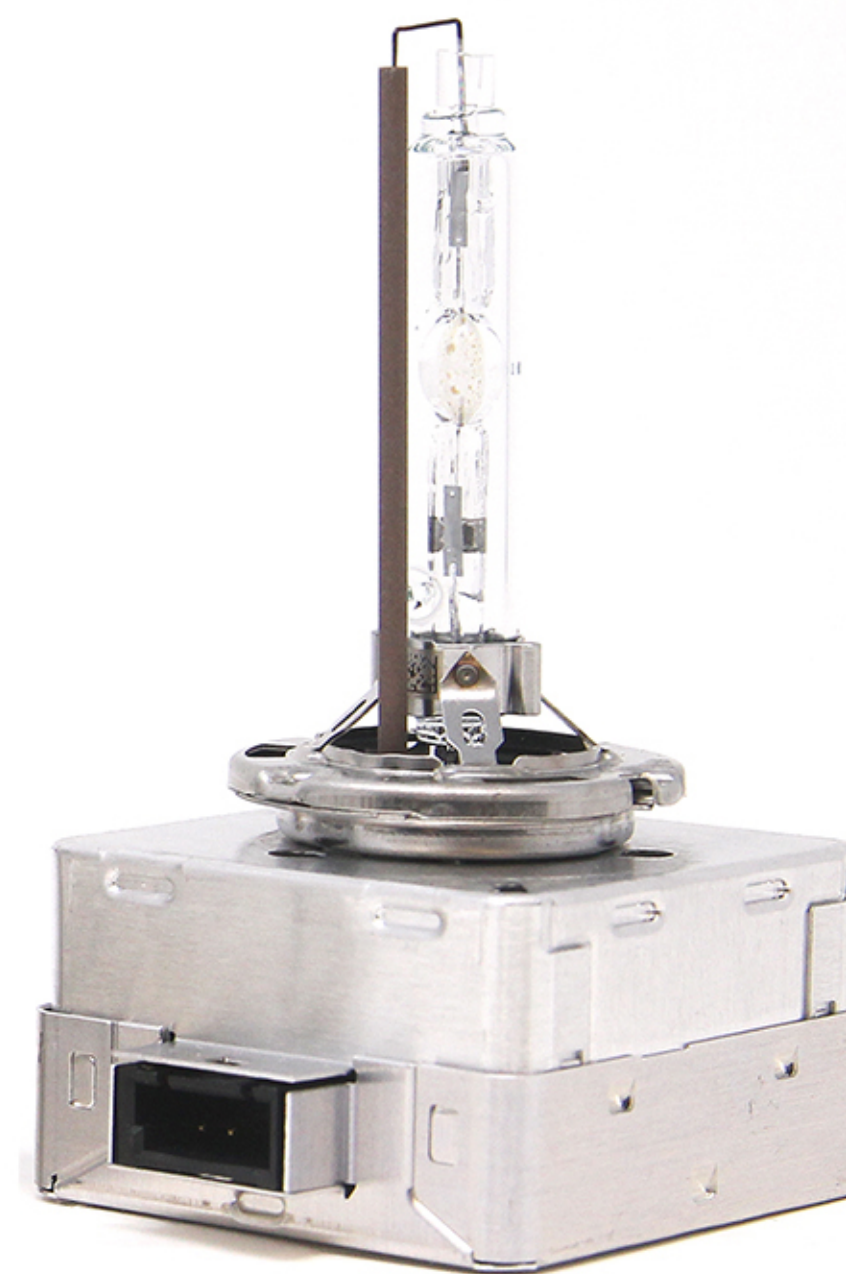
COUNTERFEIT

GENUINE PHILIPS SL(16-digit) & COA

Philips packages designs vary from region to region, but the contained bulbs in both packages are the same Philips OEM D3S HID Xenon bulbs.



PHILIPS SL



PHILIPS W/ COA

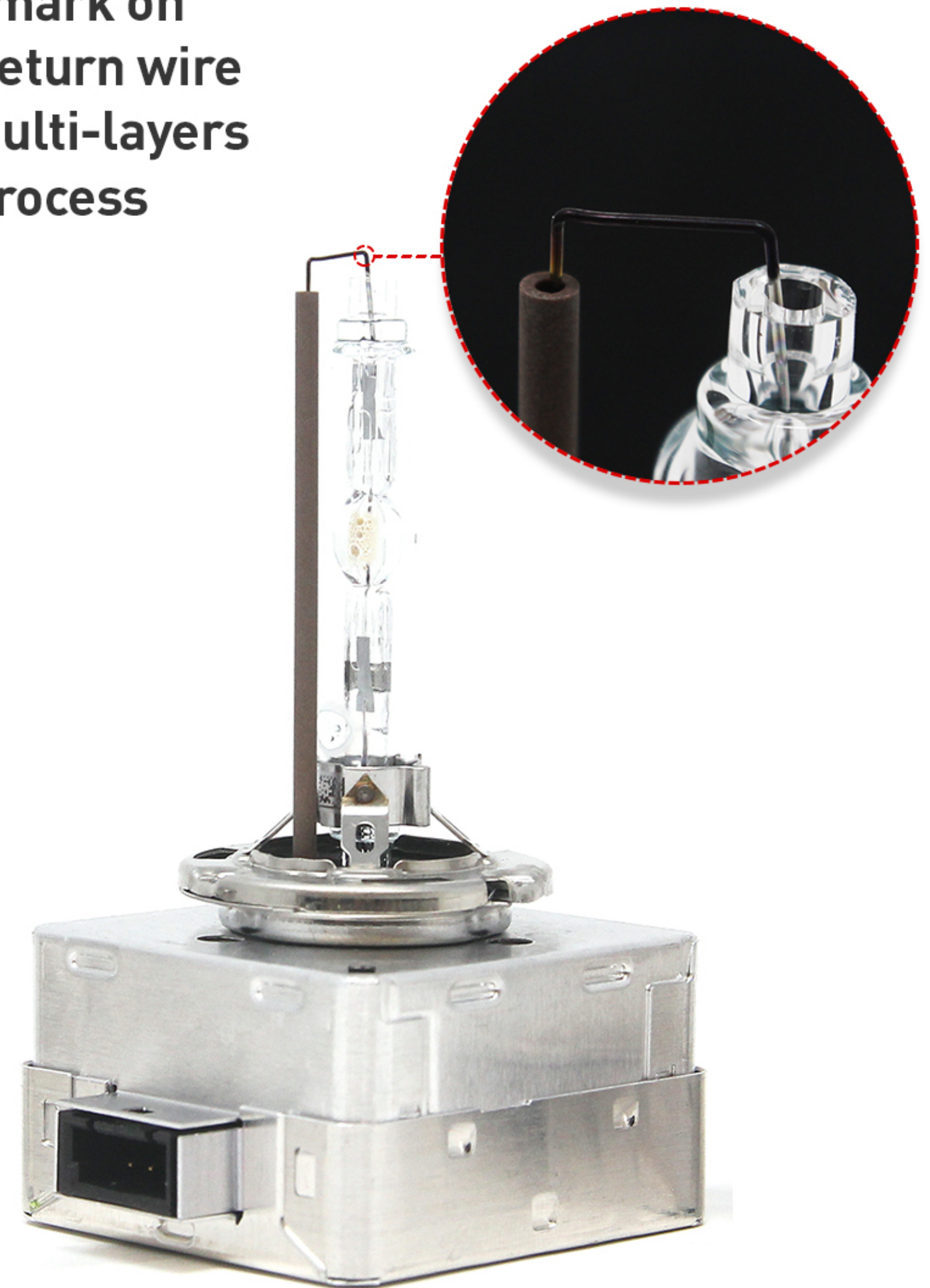
1 Return Wire Tip

Shiny return wire



COUNTERFEIT

Burnt-mark on top of return wire from multi-layers of QC process



GENUINE PHILIPS SL(16-digit) & COA

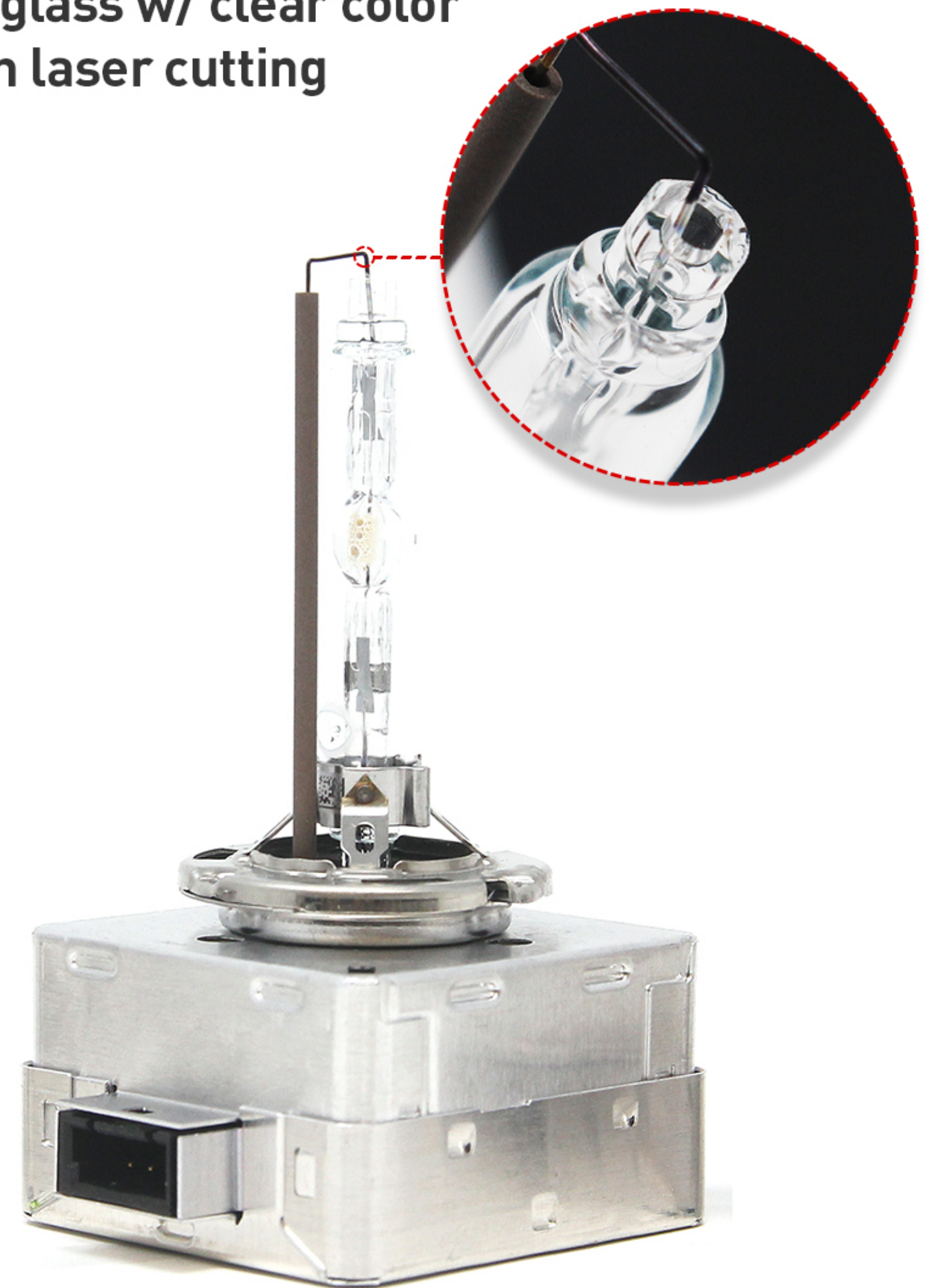
2 Glass Tip cutting

Regular glass
w/ Frosted-like cutting



COUNTERFEIT

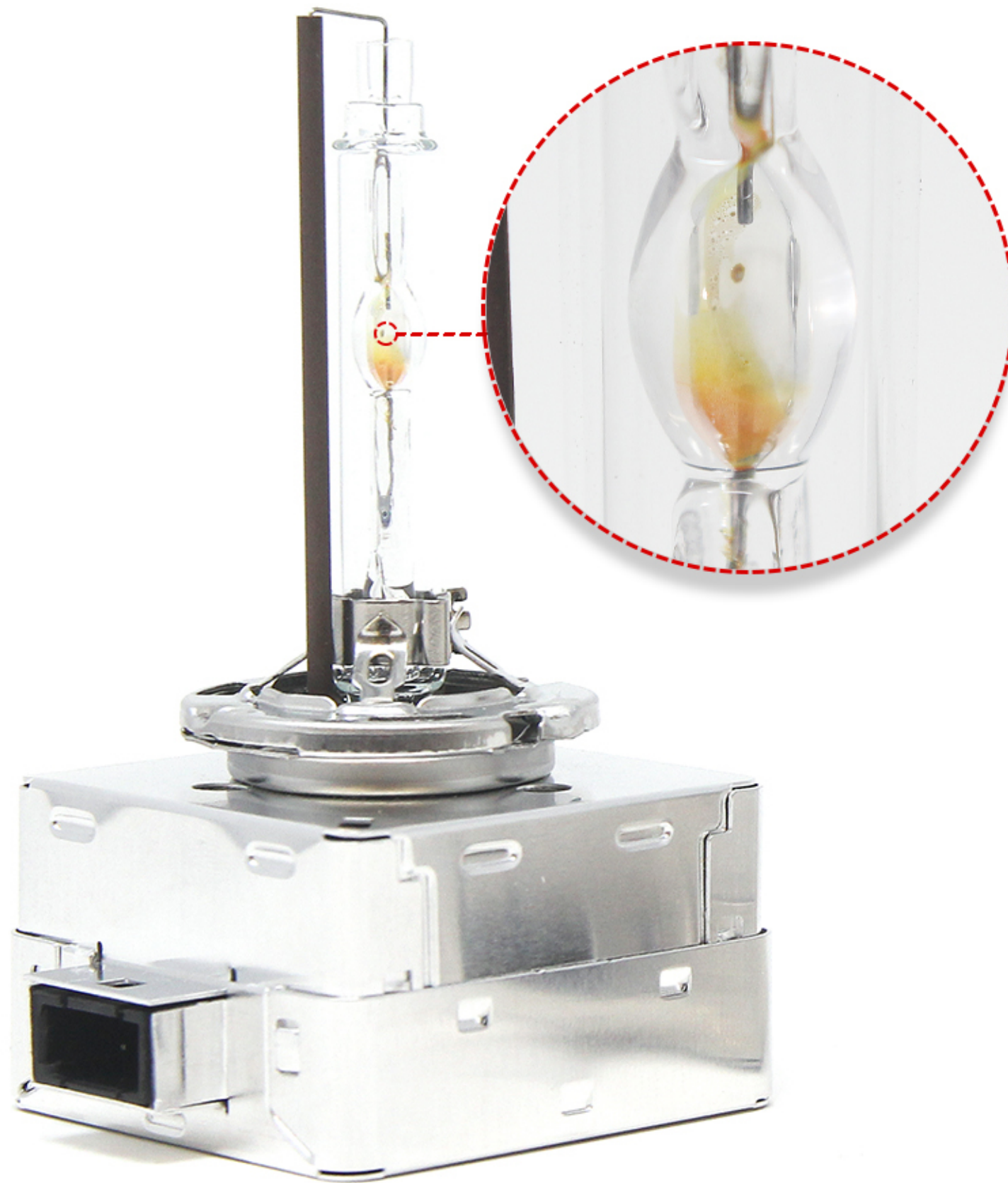
Quartz glass w/ clear color
& rough laser cutting



GENUINE PHILIPS SL(16-digit) & COA

3 Shape of center arc

Irregular, oblong center arc



COUNTERFEIT

Perfect circular center arc



GENUINE PHILIPS SL(16-digit) & COA

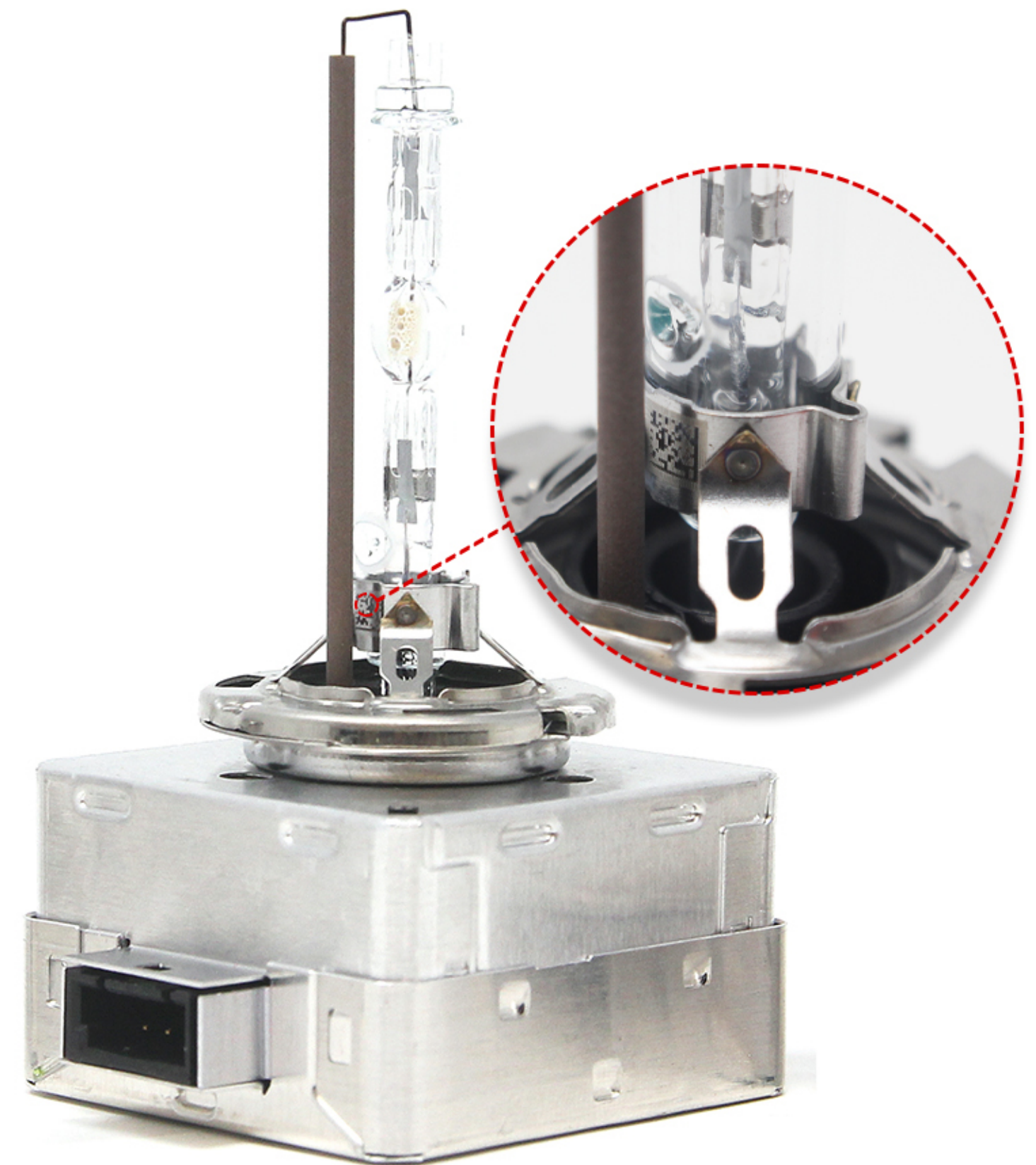
4 Small system code & Dimple mark

Missing Dimple mark
and the system coding



COUNTERFEIT

All Philips D3s bulbs have a Dimple mark
and the system coding on the holder



GENUINE PHILIPS SL(16-digit) & COA

5 Base cover open gap

Gaps and holes on the igniter body assembly



COUNTERFEIT

The precision igniter body assembly

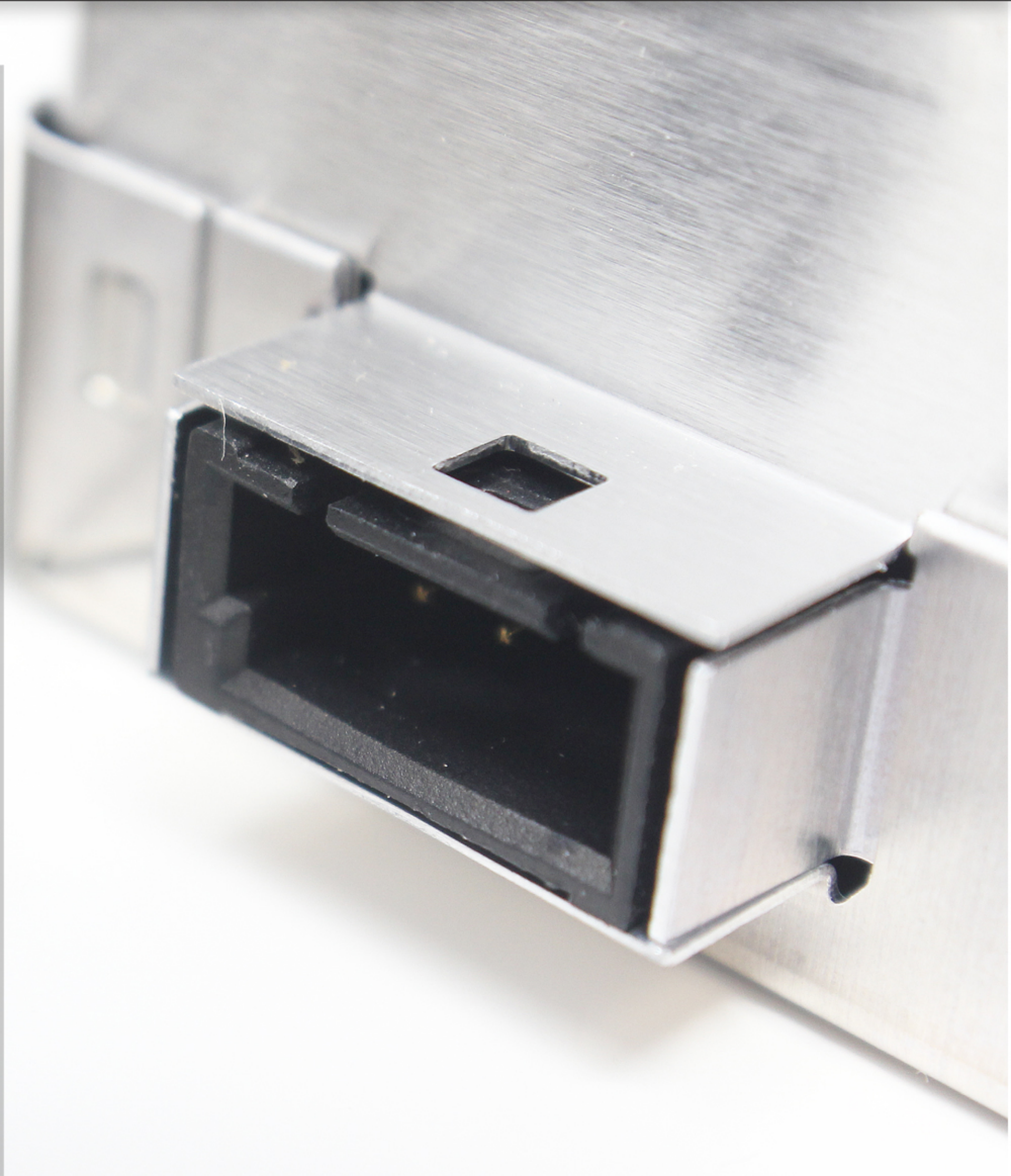


GENUINE PHILIPS SL(16-digit) & COA

6 Plug terminal

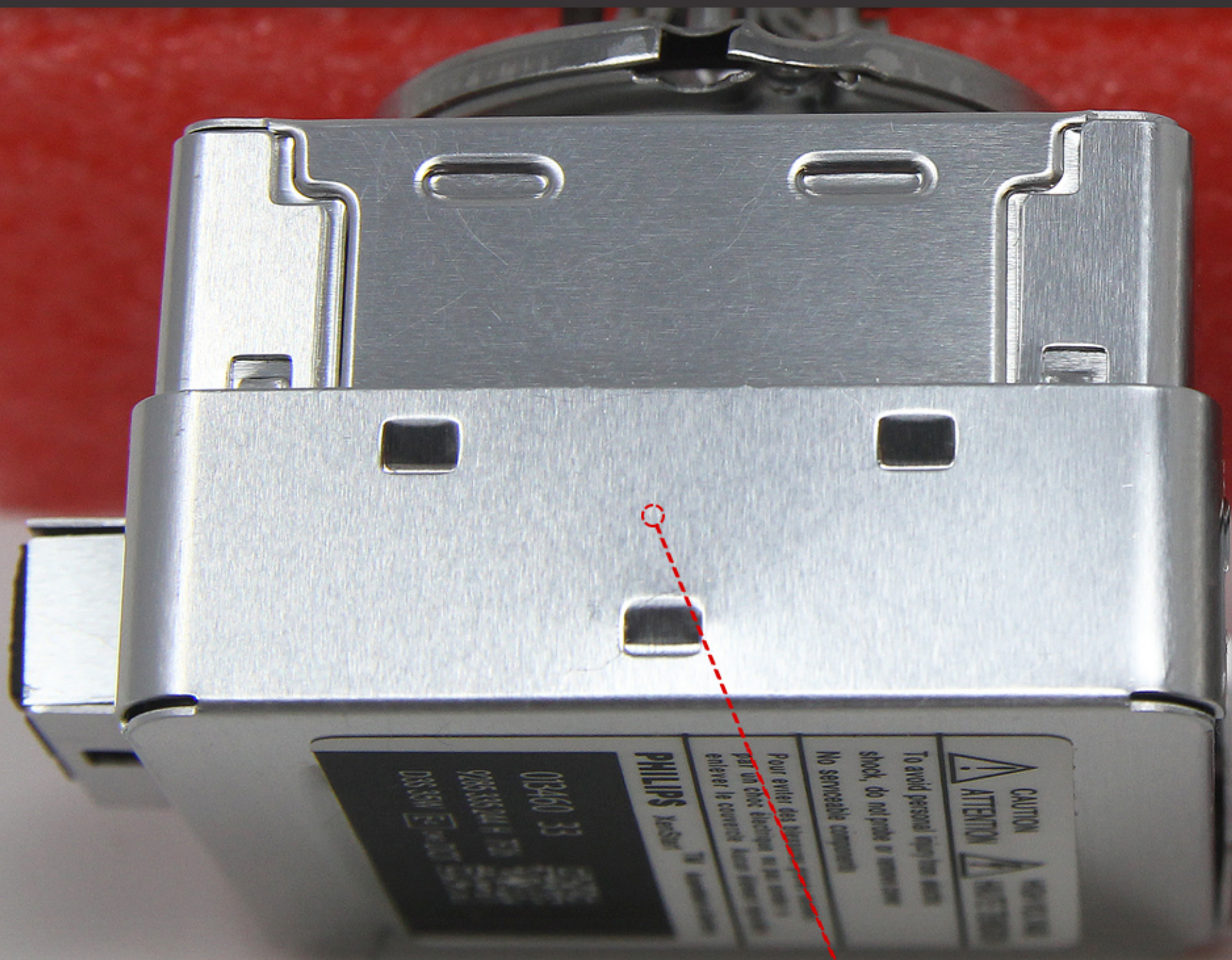


COUNTERFEIT

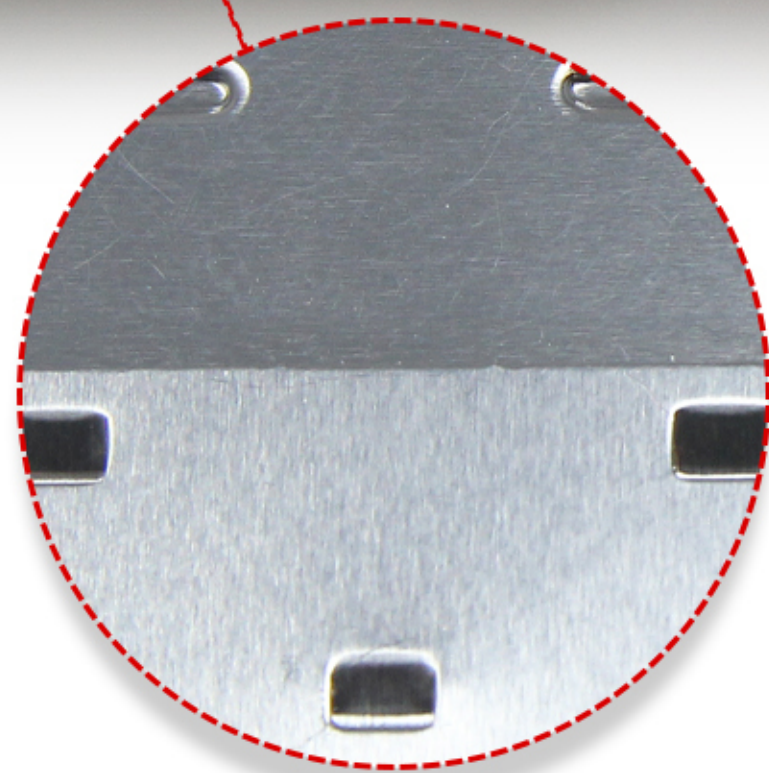


GENUINE PHILIPS SL(16-digit) & COA

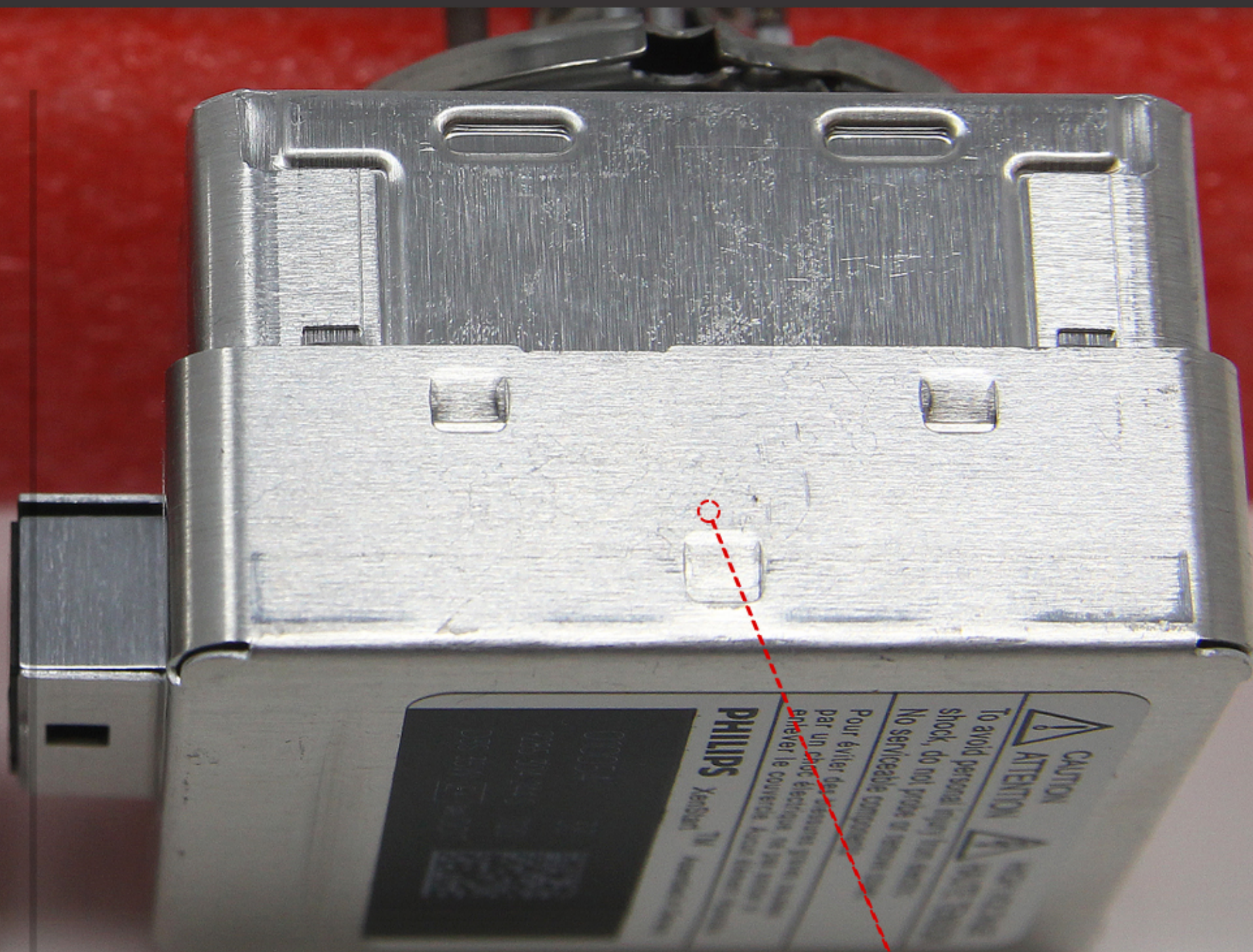
7 Body



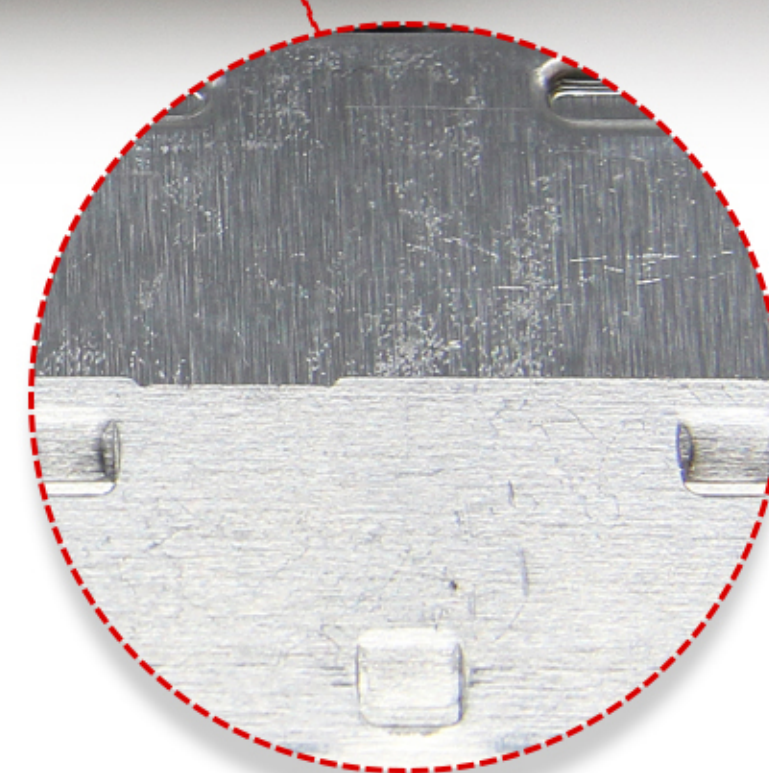
Regular shiny chrome body



COUNTERFEIT



Brushed aluminum finished body



GENUINE PHILIPS SL(16-digit) & COA

8 Label

Counterfeit has strange QR code



COUNTERFEIT

Genuine Philips has a System coding



GENUINE PHILIPS SL(16-digit) & COA