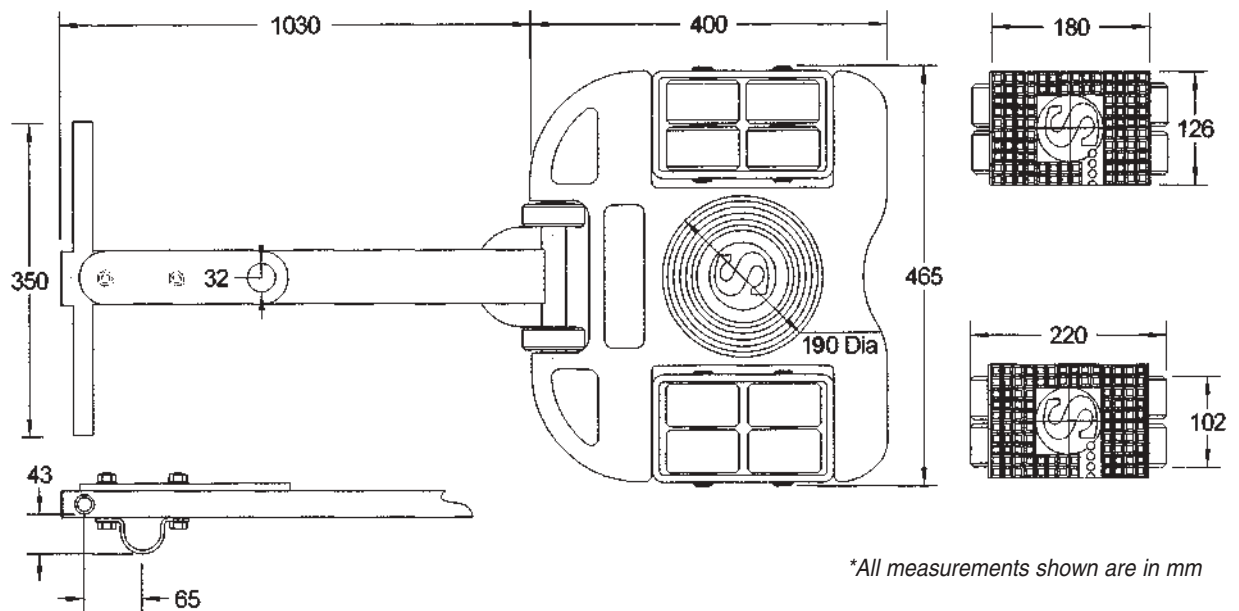


TECHNICAL SPECIFICATION

Model: SX10

Description: 10 tonne Nylon Wheeled Skates



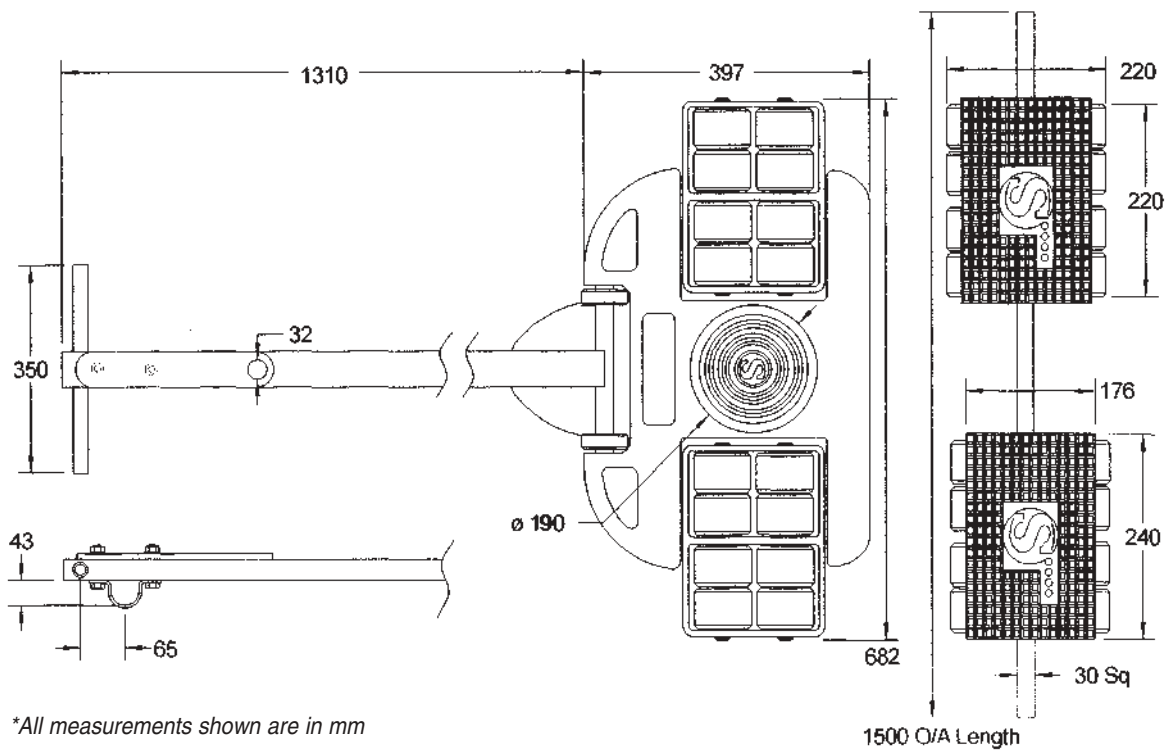
Model	Capacity of system (tonnes)	Colour and quantity of wheels	Size of wheels (mm)	Turntable diameter (mm)	Overall height (mm)	Rear width adjustment (mm)	Boxed weight (kgs)
SX10	10	Black x 16	82 x 48	190	102	252 to 1200	54

“Moving Loads the Professional Way!”

TECHNICAL SPECIFICATION

Model: SX20

Description: 20 tonne Nylon Wheeled Skates



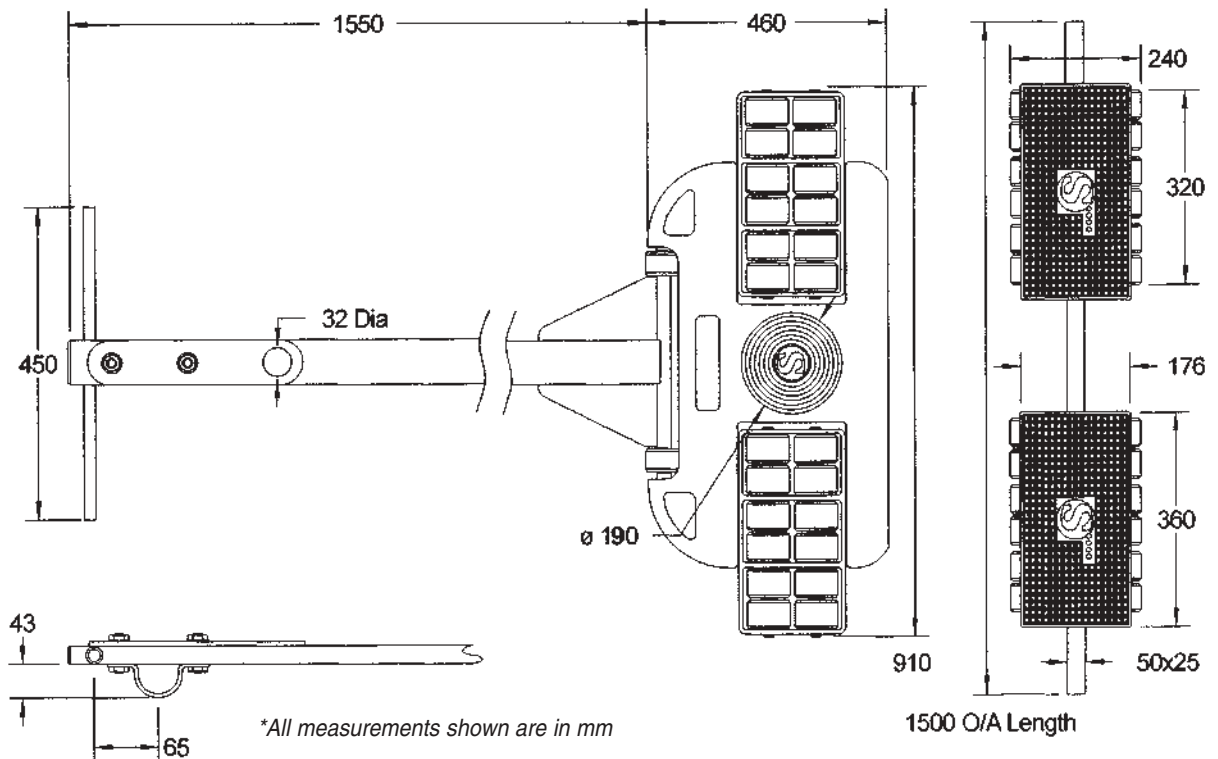
Model	Capacity of system (tonnes)	Colour and quantity of wheels	Size of wheels (mm)	Turntable diameter (mm)	Overall height (mm)	Rear width adjustment (mm)	Boxed weight (kgs)
SX20	20	Black x 32	82 x 48	190	102	480 to 1500	76

“Moving Loads the Professional Way!”

TECHNICAL SPECIFICATION

Model: SX30

Description: 30 tonne Nylon Wheeled Skates



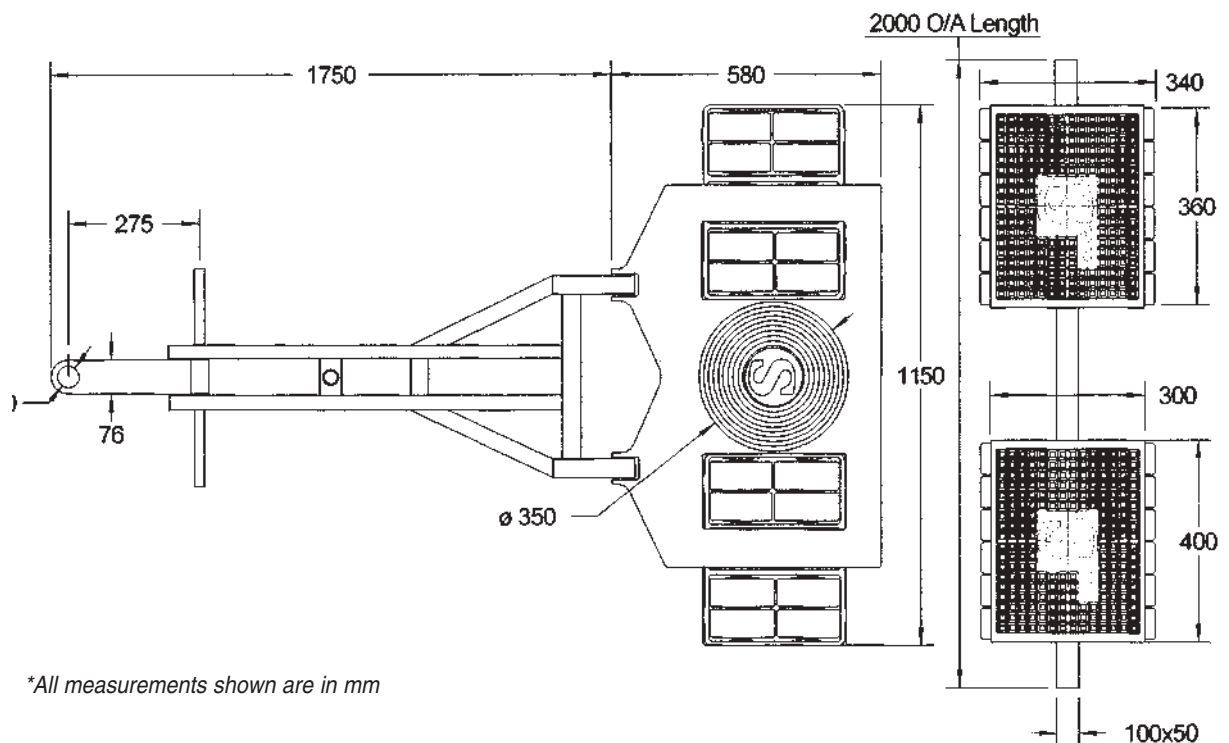
Model	Capacity of system (tonnes)	Colour and quantity of wheels	Size of wheels (mm)	Turntable diameter (mm)	Overall height (mm)	Rear width adjustment (mm)	Boxed weight (kgs)
SX30	30	Black x 48	82 x 48	190	110	720 to 1500	136

“Moving Loads the Professional Way!”

TECHNICAL SPECIFICATION

Model: S60

Description: 60 tonne Nylon Wheeled Skates



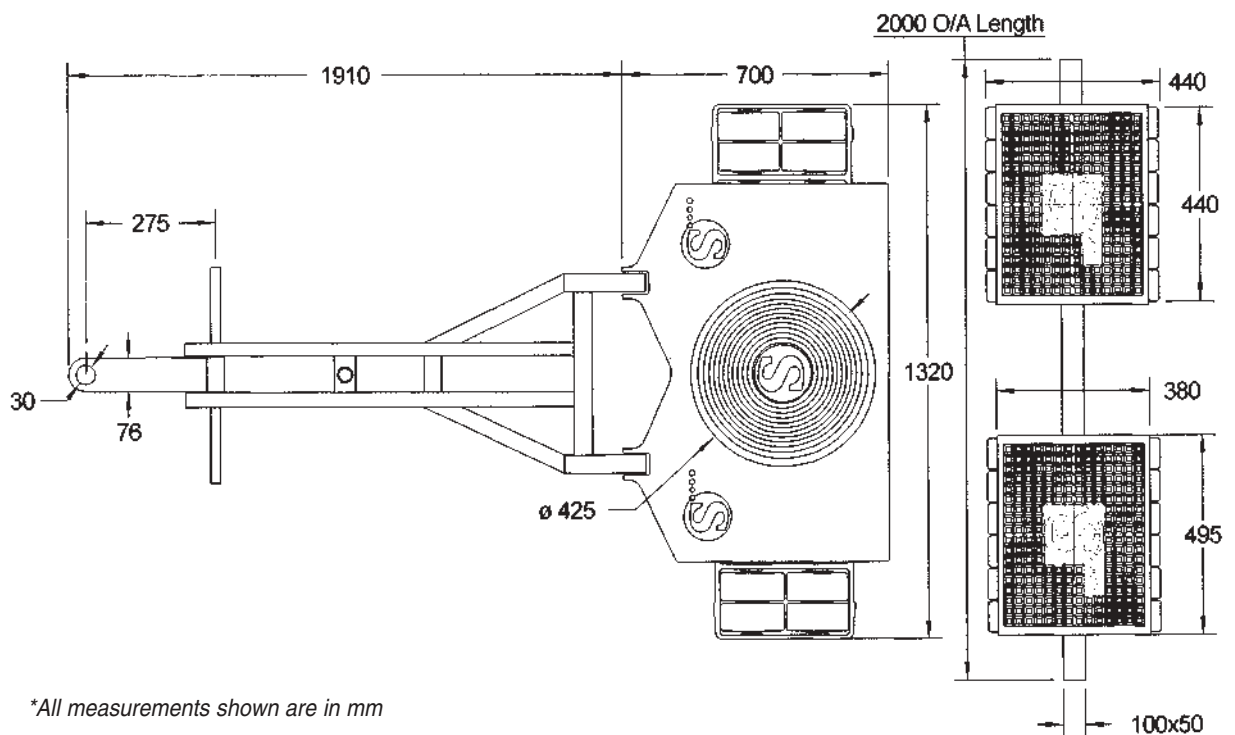
Model	Capacity of system (tonnes)	Colour and quantity of wheels	Size of wheels (mm)	Turntable diameter (mm)	Overall height (mm)	Rear width adjustment (mm)	Boxed weight (kgs)
S60	60	Black x 48	115 x 54	350	170	800 to 2000	302

“Moving Loads the Professional Way!”

TECHNICAL SPECIFICATION

Model: S100

Description: 100 tonne Nylon Wheed Skates



**All measurements shown are in mm*

Model	Capacity of system (tonnes)	Colour and quantity of wheels	Size of wheels (mm)	Turntable diameter (mm)	Overall height (mm)	Rear width adjustment (mm)	Boxed weight (kgs)
S100	100	Black x 48	150 x 65	425	210	990 to 2000	525

“Moving Loads the Professional Way!”