

# LODESTAR<sup>®</sup> D8+ TÜV SÜD Certified

## ELECTRIC CHAIN MOTOR

### CAPACITIES

500 kg to 2000 kg

### LIFT

18 metre standard\*\*\*

### SPEEDS

2 to 16 metre/minute

### VOLTAGES

3-phase available

The Lodestar D8+ meets all current standard requirements. Its clutch, outside the load path, acts as a precise overload device; and design factor is 8:1 with a double brake installed.

**The Lodestar D8+ is in accordance with 2018 igwv SQ P2.**

### STANDARD FEATURES

#### IP 65 RATING

An Ingress Protection (IP) Rating of 65 indicates that the Lodestar offers protection from dust and high-pressure water – making this unit ideal for use in outdoor environments.

#### ADJUSTABLE CLUTCH

Clutch outside of gear train meets International standards and is fully adjustable. Designed to prevent damage to the hoist by preventing excessive overloads.

#### 5 POCKET LIFTWHEEL

Improved chain life & smooth lifting.

#### PRECISION HELICAL GEARING

Designed for long life, and smoother operation.

#### REDESIGNED CONTROL PANEL

For easier access.

#### HEAVY DUTY DC BRAKE

Designed for a long service life, the brake location allows for quick access & easy inspection.

#### LOW VOLTAGE CONTROL

110 Volt for long cable runs without voltage drop. 24 & 48 Volt optional. (Low Voltage Unit Only)

#### DURABLE & LIGHTWEIGHT HOUSING

Cast aluminum. Black powder coated finish for low visibility.

#### LOAD CHAIN

Designed and manufactured by Columbus McKinnon to provide a factor of safety of 8:1. Zinc plated to protect against corrosion. Optional black finish available.

#### DUTY CYCLE

H4, FEM 2M rated for heavy duty applications

#### ELECTRICAL

Finger safe wiring meets all electrical codes. Quick change plugs allow for voltages 230 through 460. Prevents improper voltage connections which can cause hoist damage. (Low Voltage Unit Only).

#### ADJUSTABLE LIMIT SWITCH

Adjustable limit switch that will automatically stop the hook at any predetermined point when either lifting or lowering, preventing overtravel. (Low Voltage Unit Only).

#### METRIC RATED MEETS REQUIREMENTS

Meets or exceeds world standards.

#### ROAD READY

Easy to stow and travel.



**LIFT WHEEL**

5 Pocket liftwheel increases chain and liftwheel engagement while providing smoother lifting, less vibration and reduced chain wear when properly maintained.



**BRAKE**

Heavy duty double DC brake.



**LIMIT SWITCH (Low Voltage unit only)**

Adjustable limit switch that will automatically stop the hook at any predetermined point when either lifting or lowering.

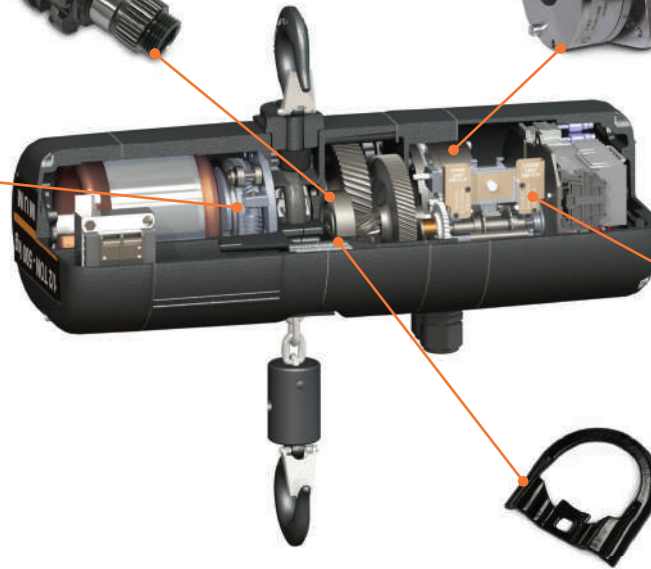


**ADJUSTABLE CLUTCH**

Designed to prevent lifting of excessive overloads. Located outside the gear box and easy to access.

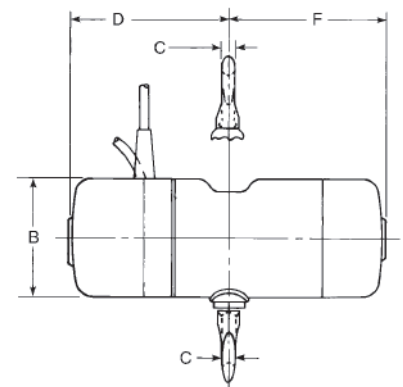
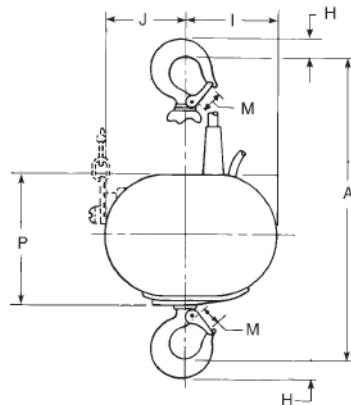
**INTERNAL CHAIN GUIDE**

Stamped steel guide coated for corrosion resistance and quiet operation, while keeping the load chain and liftwheel aligned.



**DIMENSIONS**

Drawing Legend	Dimensions (mm)		
	D8+ Series F	D8+ Series JJ, L, LL	D8+ Series R, RR
A	413mm	472mm	613mm
B	154mm	194mm	194mm
C	17mm	22mm	29mm
D	297mm	253mm	253mm
F	225mm	329mm	329mm
H	25mm	30mm	38mm
I	107mm	145mm	179mm
J	113mm	176mm	142mm
M	25mm	28mm	33mm
P	168mm	208mm	208mm



**SPECIFICATIONS**

Type	Rate Capacity	Standard Lifting Speed at 50Hz	Operating Voltage	Single Phase Voltage	FEM Class	Chain Weight Per Metre Lift-EWL	Load Chain EN 818-7 (mm)	Power Consumption - Full Load	Reeves Fall of Chain	Motor HP	Protection Class	Noise Level
Model F	500kg	4m/min	400-3-50	optional	2M	1.2kg	6.3 x 18.9	1.2A	1	1/2 HP	IP 65	68 db (A)
Model JJ	500kg	16m/min	400-3-50	-	2M	1.65kg	7.9 x 21.7	3.6A	1	2 HP	IP 65	68 db (A)
Model L	1000kg	4m/min	400-3-50	optional	2M	1.65kg	7.9 x 21.7	2.3A	1	1 HP	IP 65	68 db (A)
Model LL	1000kg	8m/min	400-3-50	-	2M	1.65kg	7.9 x 21.7	3.6A	1	2 HP	IP 65	68 db (A)
Model R	2000kg	2m/min	400-3-50	optional	2M	3.3kg	7.9 x 21.7	2.3A	2	1 HP	IP 65	68 db (A)
Model RR	2000kg	4m/min	400-3-50	-	2M	3.3kg	7.9 x 21.7	3.6A	2	2 HP	IP 65	68 db (A)

\*\*\* Lifts other than 18 metres available (Standard Units shipped less chain unless specified). Consult factory for additional speeds and capacities

**OPTIONAL FEATURES**

**DOUBLE LIMIT SWITCH**

Adjustable screw limit switch that will automatically stop the hook at any predetermined point when either lifting or lowering.

**CHAIN BAGS**

Cloth type bags are durable and easy to mount.

**DIRECT CONTROL UNITS**

The CM Lodestar is available as a Direct Control Unit featuring a single cable. Direct Control Units can be used as part of a system with multiple units with a single control. The Lodestar is compatible with most Direct Control Motor Controllers.