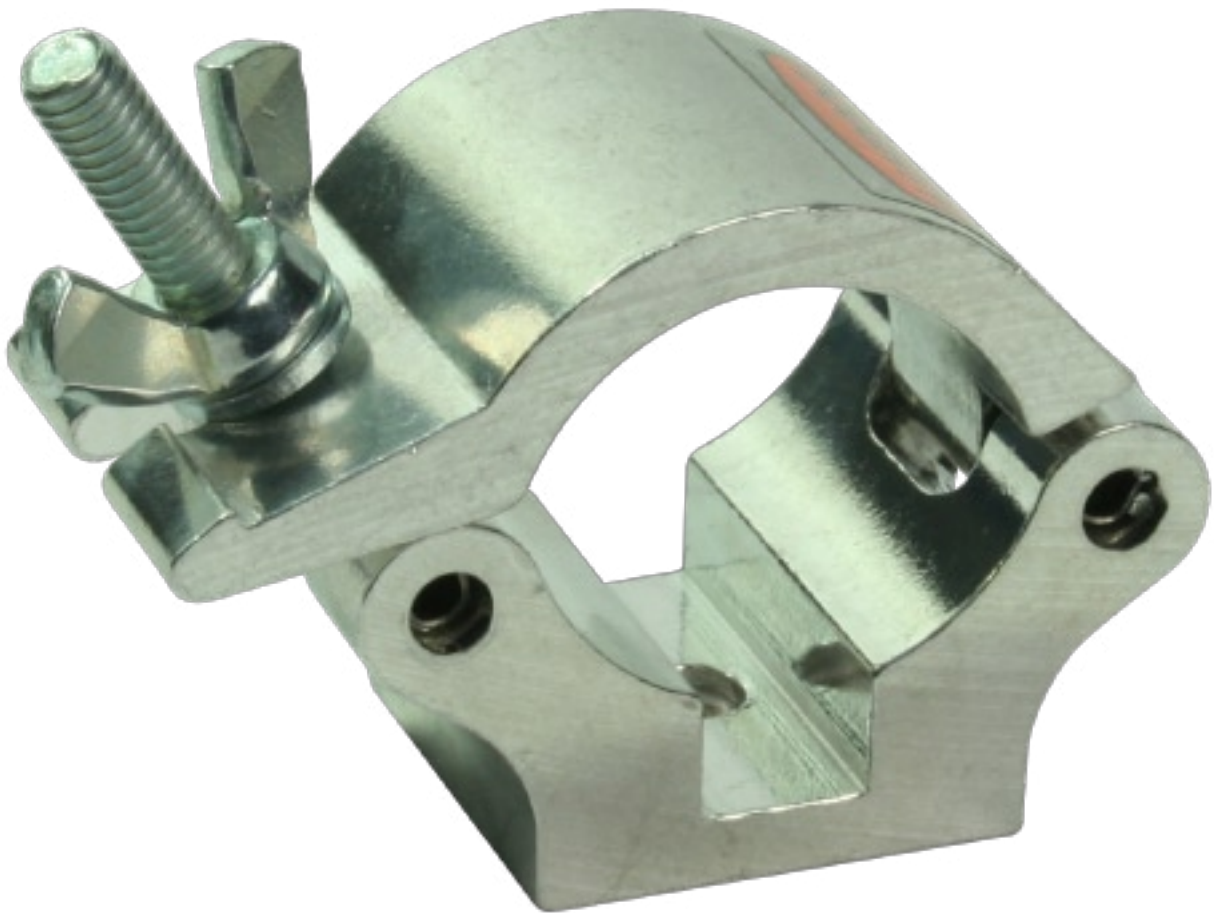




# User Manual

[www.doughty-engineering.co.uk](http://www.doughty-engineering.co.uk)

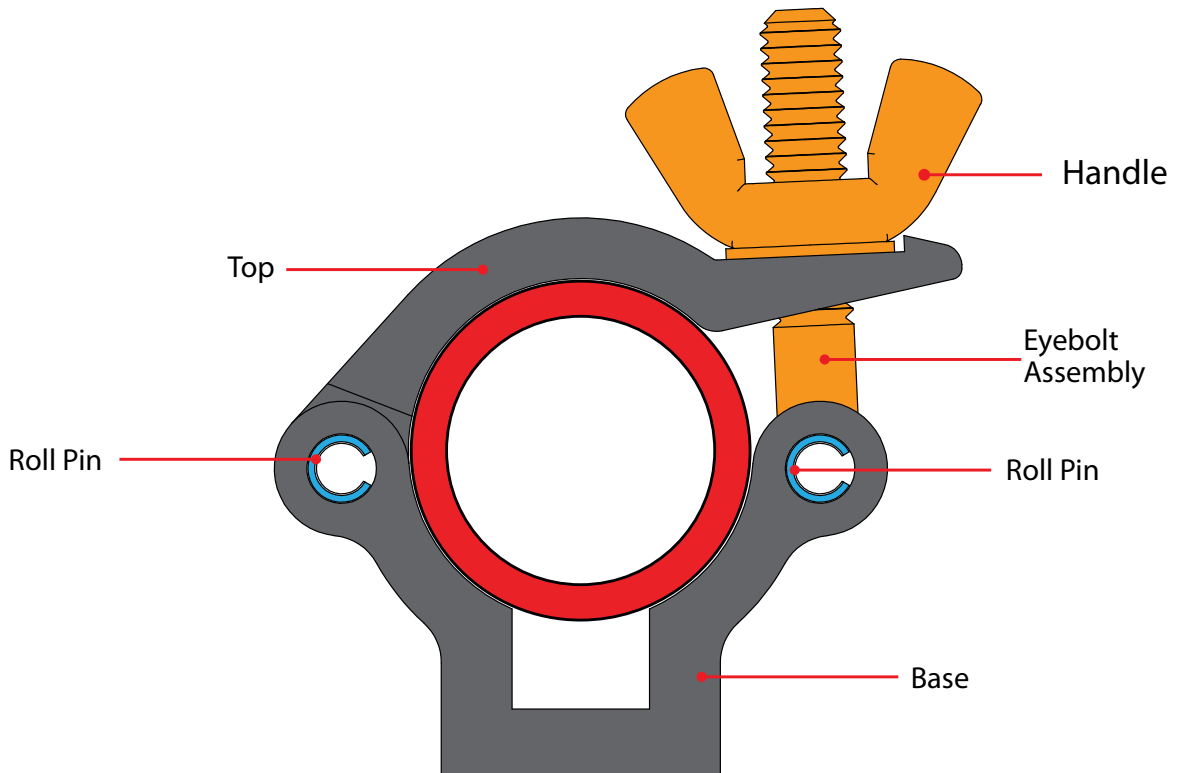
## 25mm - T58870/T5887001 25 Atom Half Coupler



Version 03/11



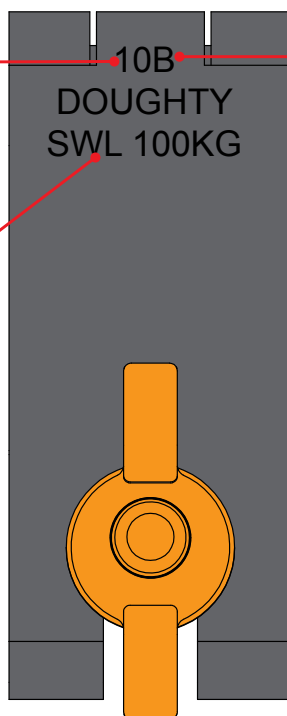
[www.doughty-engineering.co.uk](http://www.doughty-engineering.co.uk)



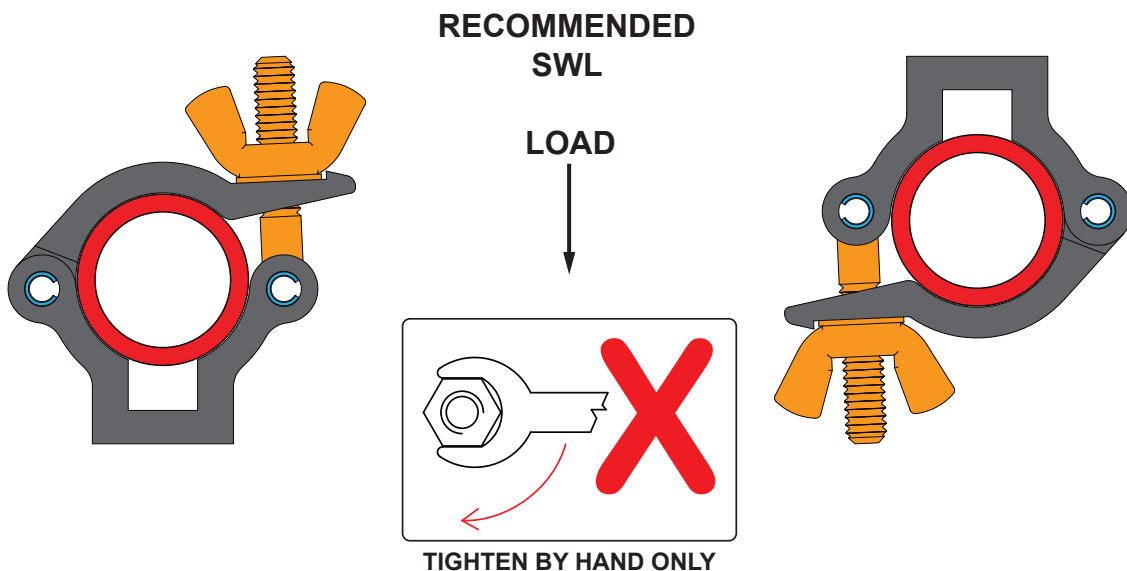
Year of Manufacturer  
i.e. - 09 = 2009  
**10 = 2010**  
11 = 2011

Month of Manufacturer  
i.e. - A = Jan  
**B = Feb**  
C = March

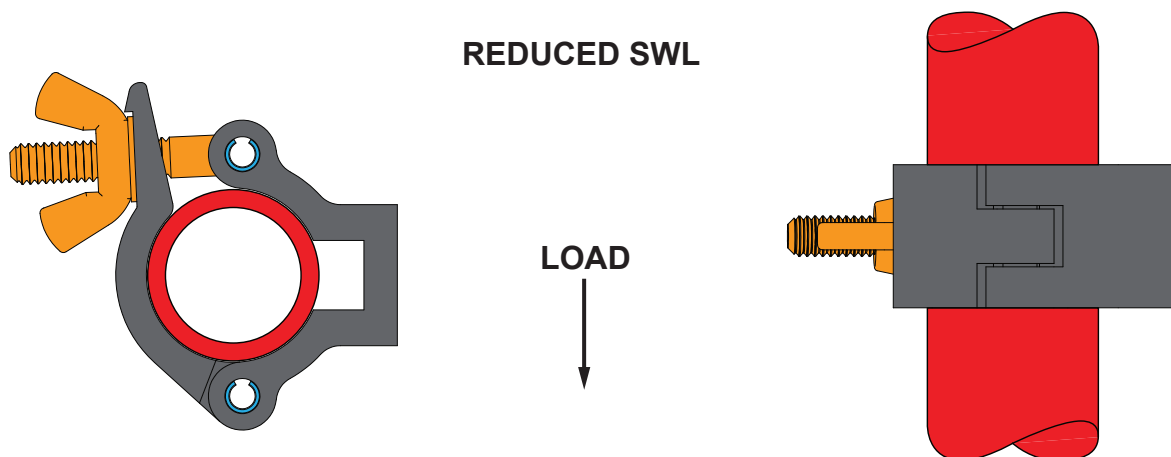
Safe Working Load



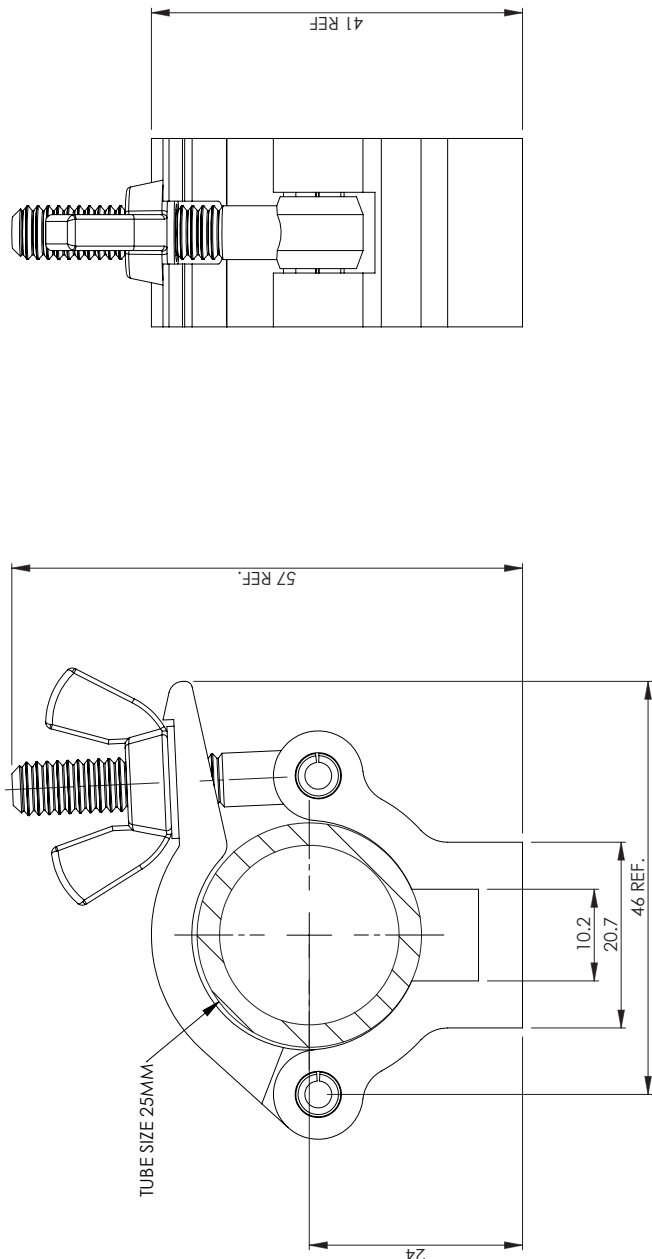
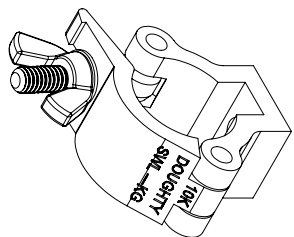
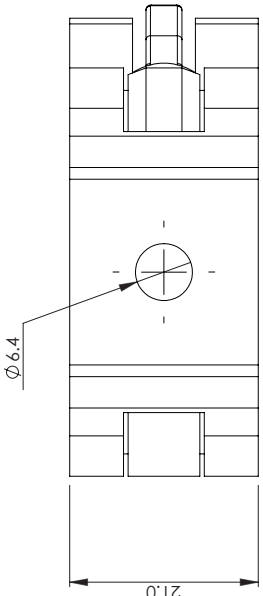


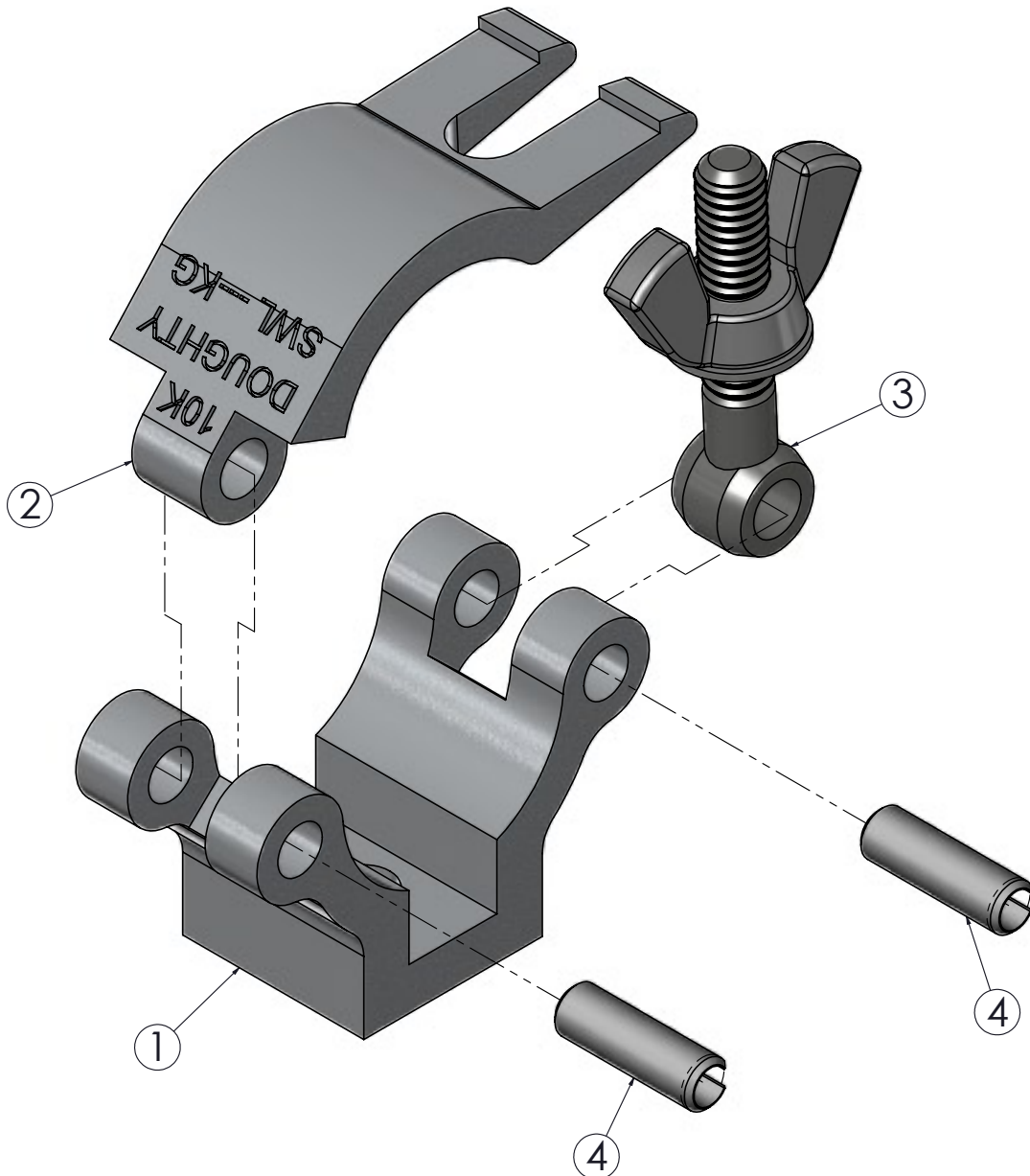
1. Never exceed the Safe Working Load (SWL) shown on the clamp.
2. Only use the clamp within the designed tube parameters (25mm)
3. All clamps should be visually inspected before use. In the event of any damage the clamp should be taken out of service and returned to an 'Approved Doughty Service Agent' for inspection. (see our dealer locator on our web site for a comprehensive list of Authorised Service Agents)
4. When used in conjunction with other accessories, care must be taken to ensure that the minimum SWL of any component is not exceeded.
5. Doughty Engineering Ltd does not recommend using any clamps which do not fully encompass the tube for overhanging. All open clamps including hookclamps should be used in a vertical orientation only.



THE FOLLOWING APPLICATIONS WILL RESULT IN THE RECOMMENDED SWL BEING REDUCED DEPENDANT ON THE TUBE SURFACE FINISH & TORQUE SETTINGS APPLIED. PROOF LOADING ON INSTALLATIONS IS RECOMMENDED.



 DOUGHTY ENGINEERING LTD	<h2 style="text-align: center;">DATA SHEET</h2> <p><b>TITLE:</b> 25MM ATOM HALF COUPLER</p> <p><b>PART NOS:</b> T58870 - SILVER T5887001 - BLACK</p> <p><b>MATERIAL :</b> ALUMINIUM</p> <p><b>WEIGHT:</b> N/A</p> <p><b>SWL:</b> 100 KG</p> <p><b>FINISH:</b> T58870 - POLISHED T5887001 - POWDER PAINTED BLACK</p> <p><b>NOTES:</b></p>	<p style="text-align: center;"><b>STRICTLY FOR REFERENCE PURPOSES ONLY</b></p>	 THIRD ANGLE PROJECTION
<div style="display: flex; justify-content: space-around;"> <div style="text-align: center;">  <p>TUBE SIZE 25MM</p> </div> <div style="text-align: center;">  </div> </div> <div style="display: flex; justify-content: space-around; margin-top: 20px;"> <div style="text-align: center;">  <p><math>\phi 6.4</math></p> </div> </div>			



DOUGHTY PRODUCTS MUST ONLY BE SERVICED / REPAIRED BY  
AN AUTHORISED SERVICE AGENT.  
SPARE PARTS ARE ONLY AVAILABLE TO THESE AGENTS

ITEM NO.	PART NUMBER	DESCRIPTION	Default/QTY.
1	TH655	MACHINED 25MM ATOM CLAMP BASE	1
2	TH133	25MM ATOM CLAMP TOP MACHINING DETAILS	1
3	T78015	M6 X 35 DOUGHTY EYEBOLT ASSEMBLY	1
4	F772	M5 x 16 ROLL PIN STAINLESS STEEL	2

## T58870 - 25MM ATOM HALF COUPLER



DRAWN	AW
DATE	11/03/2011
Rev	1

NOT TO SCALE



**Doughty Engineering Limited**

CROW ARCH LANE, RINGWOOD, HANTS, BH24 1NZ. ENGLAND

Telephone: +44 (0) 1425 478961 Fax: +44 (0) 1425 474481

www.doughty-engineering.co.uk

email:sales@doughty-engineering.co.uk

**EC DECLARATION OF CONFORMITY**

Doughty Engineering Limited hereby certify that the equipment stated below has been designed to comply with all relevant sections of the specifications referenced below and complies with all the applicable Essential Requirements of the EC Directives and amendments and the National Laws and Regulations adopting these Directives.

**Description:** Ø25mm Atom Half Coupler

**Model/s:** Part No. T58870 / T5887001

**SWL:** 100Kg      **Factor:** 5:1

are in conformity with the provision of the following EC Directives:

MACHINERY DIRECTIVE 98/37/EC

**Harmonised Standards applied:**

EN 292-1-2:1991

BS EN ISO 9001:1994

Safety Tested: DIN 31000 03.79

Safety Tested: DIN EN 74 12.88

**National Technical Standards & Specifications applied:**

BS 7905-1:2001

Signed:

A handwritten signature in black ink, appearing to read "Nigel Curtis".

Date:23-04-08

Name: Nigel Curtis

Position: Technical Director

Being the responsible person appointed by the manufacturer.



DEQ 083 Rev 4

Company Registration No. London 972614  
Registered Office: Crow Arch Lane, Ringwood, Hants, BH24 1NZ  
Directors: M.B.Lister. J.C.G. Chiverton. N.D. Curtis. S.C. Wright





**Doughty Engineering Ltd**

Crow Arch Lane

Ringwood, Hampshire, BH24 1NZ

Tel: +44 (0) 1425 478961 Fax: +44 (0) 1425 474481

email: [sales@doughty-engineering.co.uk](mailto:sales@doughty-engineering.co.uk)

Web: [www.doughty-engineering.co.uk](http://www.doughty-engineering.co.uk)

Note: Whilst every effort has been made to ensure that the information contained within this manual is correct, Doughty Engineering does not accept any liability for errors or omissions. Specifications and technical data are intended for guidance purposes only and may vary.



# User Manual

[www.doughty-engineering.co.uk](http://www.doughty-engineering.co.uk)

## T58800/T5880001 32 Atom Half Coupler

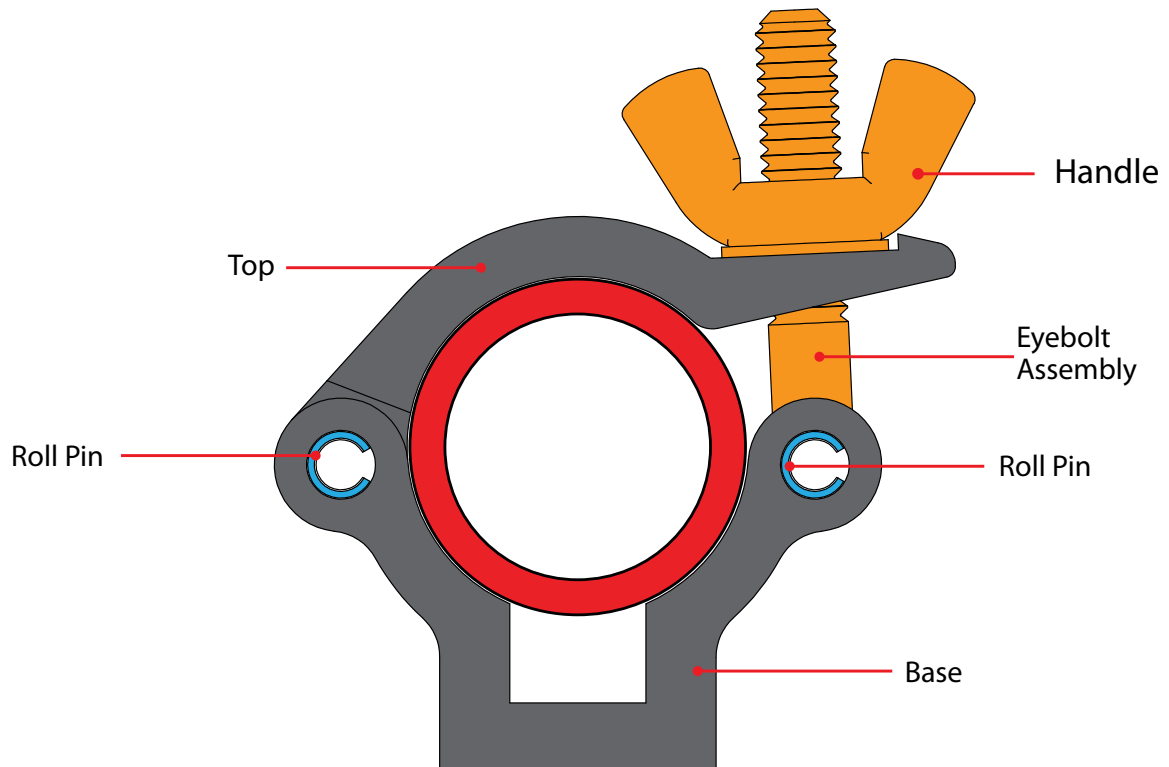


Version 03/11

[www.doughty-engineering.co.uk](http://www.doughty-engineering.co.uk)

NB: The TUV Certificate endorses T58800 Polished coupler only.

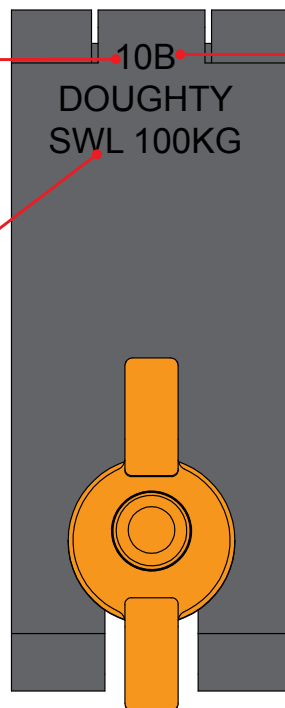




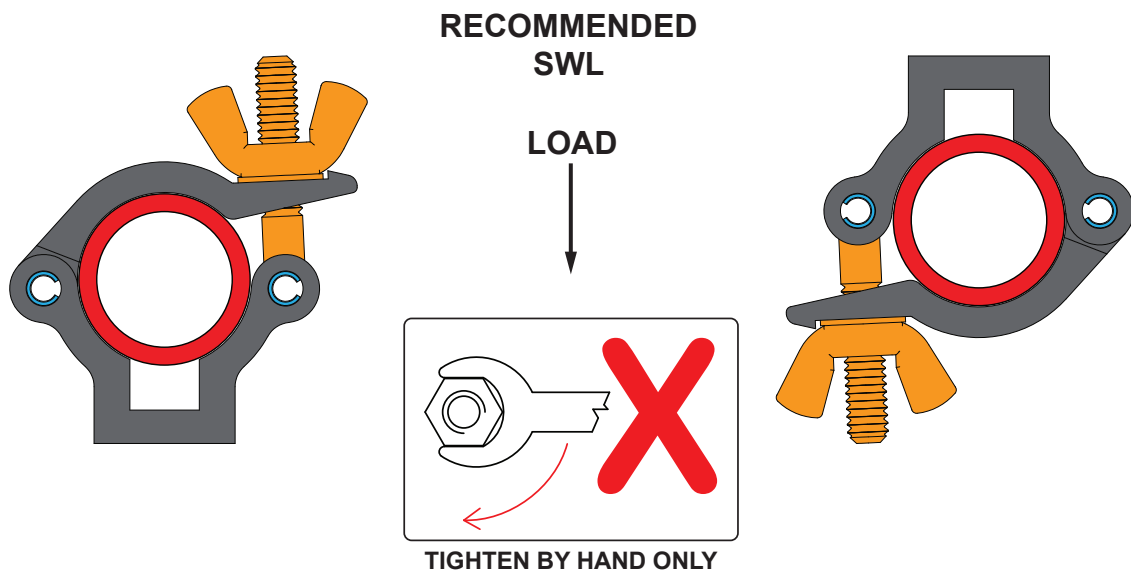
Year of Manufacturer  
i.e. - 09 = 2009  
**10 = 2010**  
11 = 2011

Month of Manufacturer  
i.e. - A = Jan  
**B = Feb**  
C = March

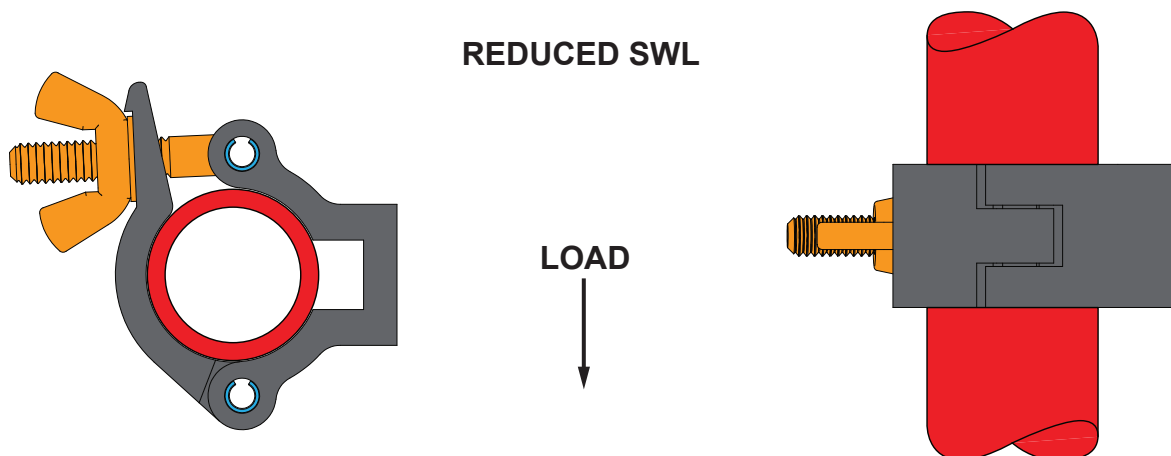
Safe  
Working  
Load





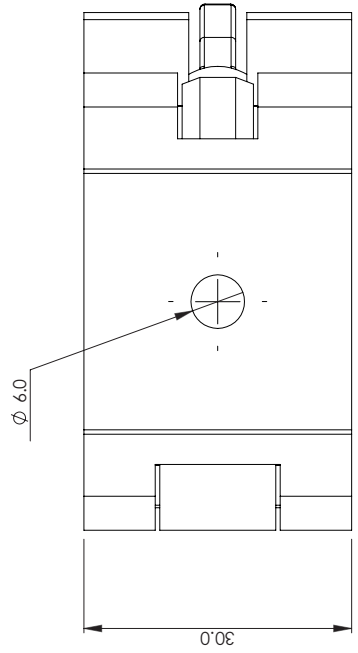
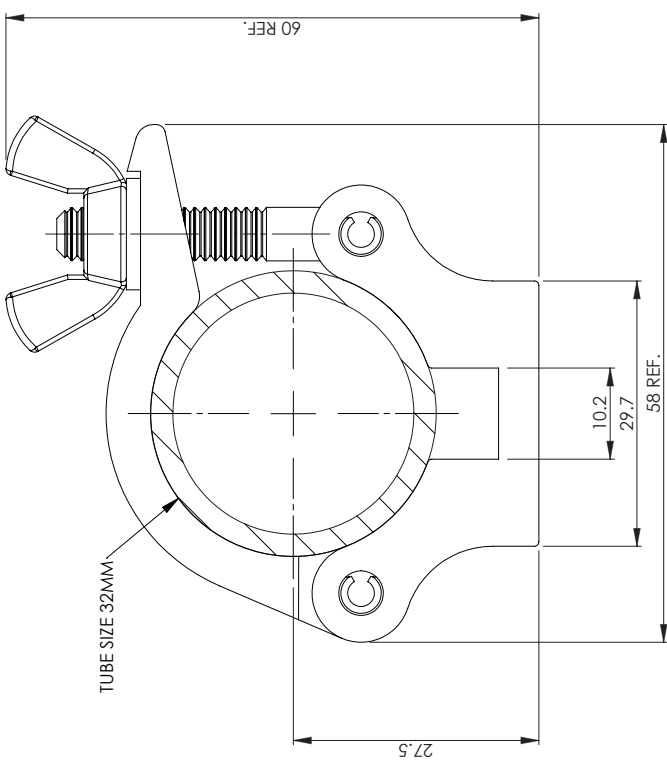
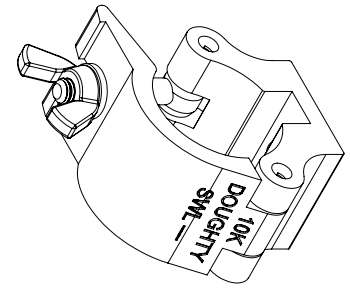
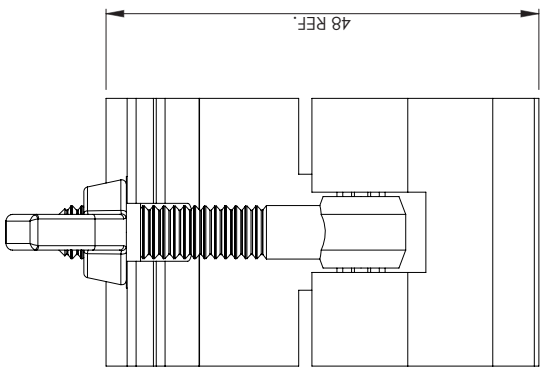
1. Never exceed the Safe Working Load (SWL) shown on the clamp.
2. Only use the clamp within the designed tube parameters (32mm)
3. All clamps should be visually inspected before use. In the event of any damage the clamp should be taken out of service and returned to an 'Approved Doughty Service Agent' for inspection. (see our dealer locator on our web site for a comprehensive list of Authorised Service Agents)
4. When used in conjunction with other accessories, care must be taken to ensure that the minimum SWL of any component is not exceeded.
5. Doughty Engineering Ltd does not recommend using any clamps which do not fully encompass the tube for overhanging. All open clamps including hookclamps should be used in a vertical orientation only.

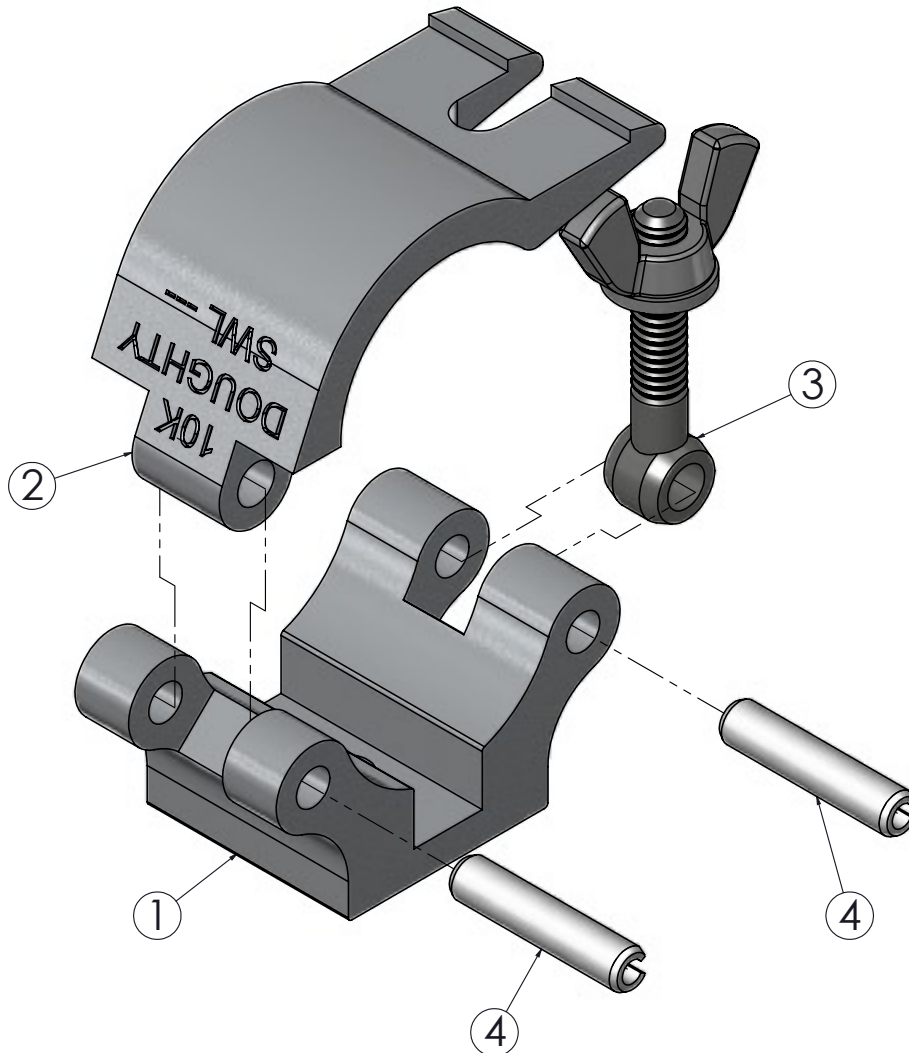


THE FOLLOWING APPLICATIONS WILL RESULT IN THE RECOMMENDED SWL BEING REDUCED DEPENDANT ON THE TUBE SURFACE FINISH & TORQUE SETTINGS APPLIED. PROOF LOADING ON INSTALLATIONS IS RECOMMENDED.



 DOUGHTY ENGINEERING LTD	<h2 style="text-align: center;">DATA SHEET</h2>	TITLE: 32MM ATOM HALF COUPLER	PART NOS: T58800 - SILVER T5880001 - BLACK	MATERIAL : ALUMINIUM	WEIGHT: N/A	SWL: 100KG	FINISH: T58800 - POLISHED T5880001 - POWDER PAINTED BLACK	NOTES:	<h3>STRICTLY FOR REFERENCE PURPOSES ONLY</h3>	 THIRD ANGLE PROJECTION
--	---	----------------------------------	--	-------------------------	----------------	---------------	--	--------	---	---





DOUGHTY PRODUCTS MUST ONLY BE SERVICED / REPAIRED BY  
AN AUTHORISED SERVICE AGENT.  
SPARE PARTS ARE ONLY AVAILABLE TO THESE AGENTS

ITEM NO.	PART NUMBER	DESCRIPTION	Default/QTY.
1	TH320	MACHINED 32MM ATOM CLAMP BASE	1
2	TH321	MACHINED 32MM ATOM CLAMP TOP	1
3	T78010	M6 X 39 EYEBOLT	1
4	F771	M5 x 25 Stainless Steel Roll Pin	2

## T58800 - 32MM ATOM HALF COUPLER



NOT TO SCALE

DRAWN

AW

DATE

18/03/2011

Rev

1



**Doughty Engineering Limited**

CROW ARCH LANE, RINGWOOD, HANTS, BH24 1NZ. ENGLAND  
Telephone: +44 (0) 1425 478961 Fax: +44 (0) 1425 474481  
www.doughty-engineering.co.uk  
email:sales@doughty-engineering.co.uk

**EC DECLARATION OF CONFORMITY**

Doughty Engineering Limited hereby certify that the equipment stated below has been designed to comply with all relevant sections of the specifications referenced below and complies with all the applicable Essential Requirements of the EC Directives and amendments and the National Laws and Regulations adopting these Directives.

**Description:** Ø 32mm Atom Clamp

**Model/s:** Part No. T58800/T5880001

**SWL:** 100Kg      **Factor:** 5:1

are in conformity with the provision of the following EC Directives:

MACHINERY DIRECTIVE 98/37/EC

**Harmonised Standards applied:**

EN 292-1-2:1991


BS EN ISO 9001:1994

Safety Tested: DIN 31000 03.79

Safety Tested: DIN EN 74 12.88

**National Technical Standards & Specifications applied:**

BS 7905-1:2001

Signed:  Date:23-04-08

Name: Nigel Curtis      Position: Technical Director

Being the responsible person appointed by the manufacturer.



DEQ 083 Rev 4

Company Registration No. London 972614  
Registered Office: Crow Arch Lane, Ringwood, Hants, BH24 1NZ  
Directors: M.B.Lister. J.C.G. Chiverton. N.D. Curtis. S.C. Wright



# Certificate

No: B 99 10 20319 008



Doughty Engineering Ltd.

Crow Arch Lane  
Ringwood, Hampshire BH24 1NZ  
Great Britain

with production facilities  
20319

is authorized to label the following products with the  
certification mark E  
as shown in the certification mark list. See also notes overleaf.

Product: Coupler

Model: Numbers : T58800

Parameters: T58800 :  
Standard Weight Limit : 100kg  
Width : 30mm  
Weight : 0.08kg  
Tube Diameter : 30-32mm

The product meets the relevant safety requirements and was tested  
according to:

EN60950/A11:1997  
DIN 31000:1979  
DIN EN 74:1988 (in Anlehnung)



Report No: GJ606429/01

Released with the above certificate number by the  
certification body of TÜV PRODUCT SERVICE GMBH.

Department: TFDEMA / BH  
Date: 10-20-99

TÜV PRODUCT SERVICE GMBH Zertifizierstelle Ridlerstrasse 31 D-80339 München



**Doughty Engineering Ltd**

Crow Arch Lane

Ringwood, Hampshire, BH24 1NZ

Tel: +44 (0) 1425 478961 Fax: +44 (0) 1425 474481

email: [sales@doughty-engineering.co.uk](mailto:sales@doughty-engineering.co.uk)

Web: [www.doughty-engineering.co.uk](http://www.doughty-engineering.co.uk)

Note: Whilst every effort has been made to ensure that the information contained within this manual is correct, Doughty Engineering does not accept any liability for errors or omissions. Specifications and technical data are intended for guidance purposes only and may vary.



# User Manual

[www.doughty-engineering.co.uk](http://www.doughty-engineering.co.uk)

## T58970/T5897001 38mm Atom Half Coupler

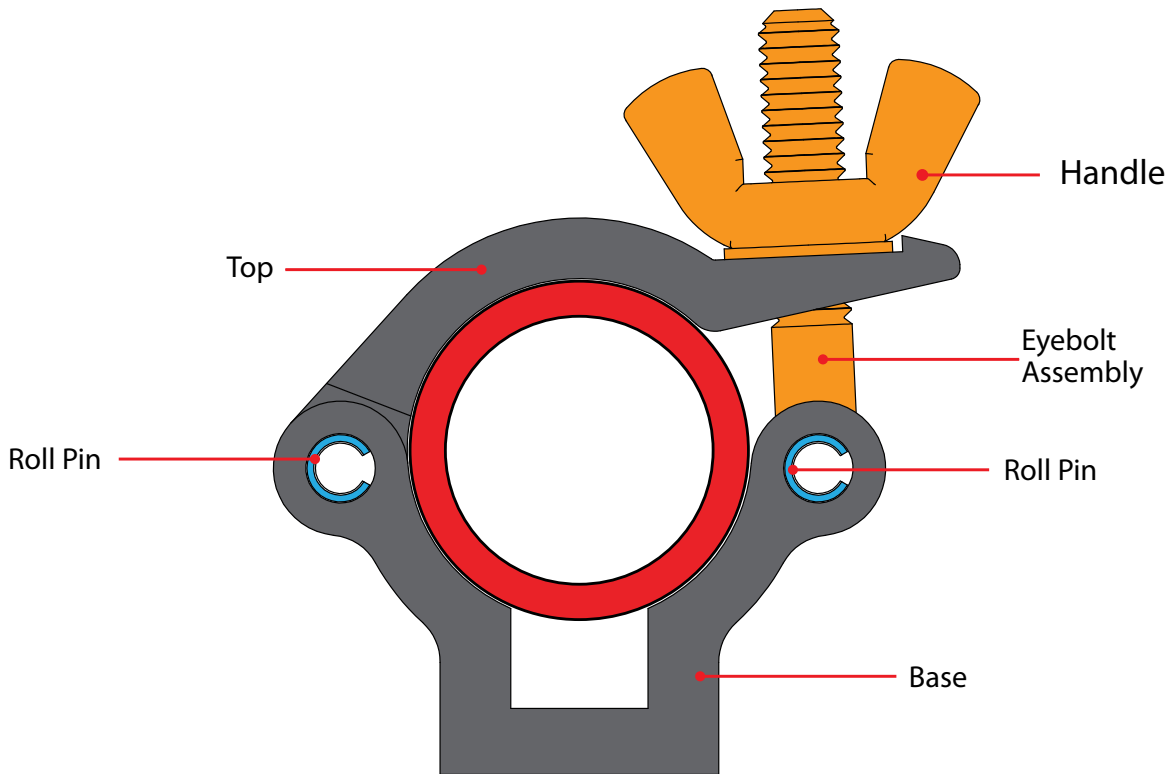


Version 03/11



[www.doughty-engineering.co.uk](http://www.doughty-engineering.co.uk)

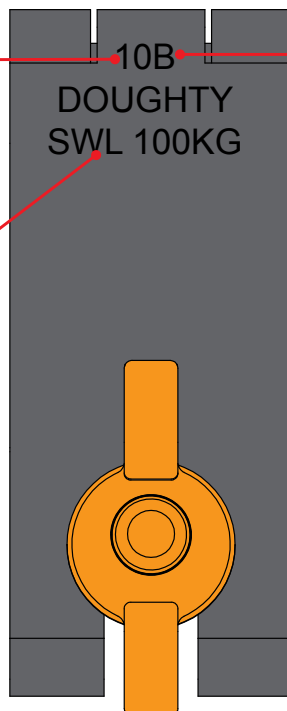




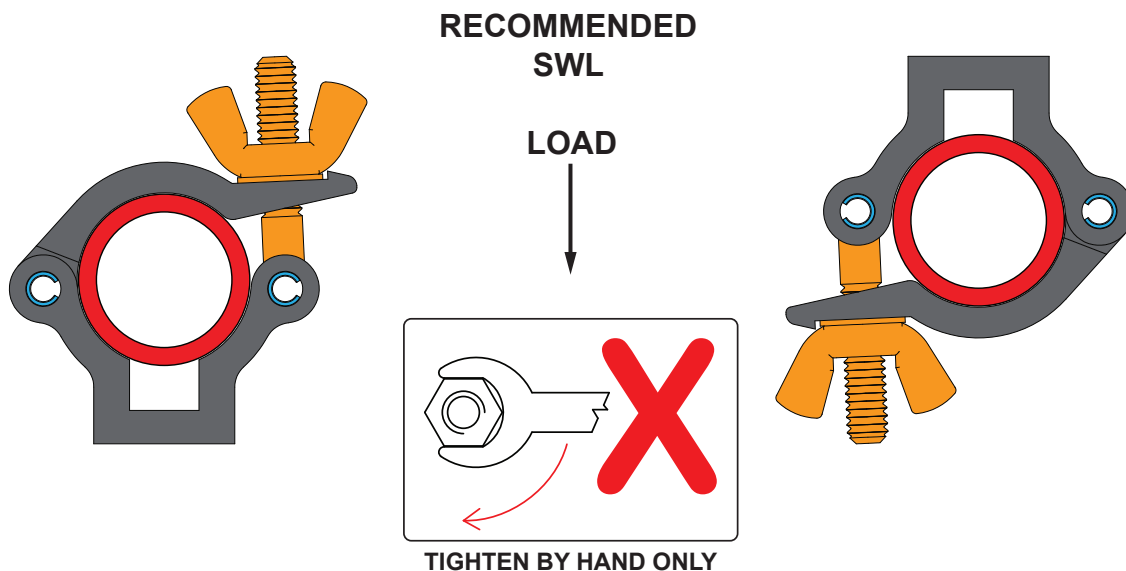
Year of Manufacturer  
i.e. - 09 = 2009  
**10 = 2010**  
11 = 2011

Month of Manufacturer  
i.e. - A = Jan  
**B = Feb**  
C = March

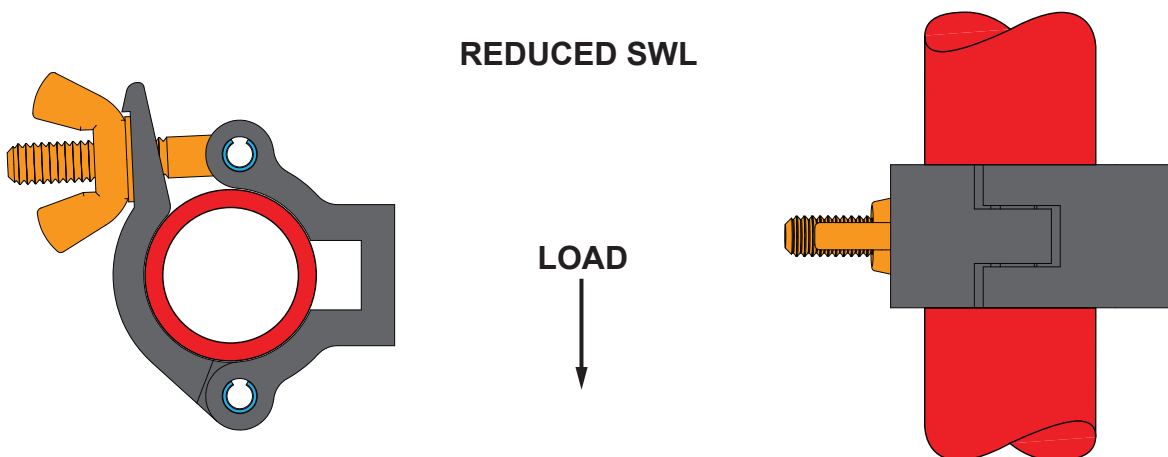
Safe  
Working  
Load



1. Never exceed the Safe Working Load (SWL) shown on the clamp.
2. Only use the clamp within the designed tube parameters (38mm)
3. All clamps should be visually inspected before use. In the event of any damage the clamp should be taken out of service and returned to an 'Approved Doughty Service Agent' for inspection. (see our dealer locator on our web site for a comprehensive list of Authorised Service Agents)
4. When used in conjunction with other accessories, care must be taken to ensure that the minimum SWL of any component is not exceeded.
5. Doughty Engineering Ltd does not recommend using any clamps which do not fully encompass the tube for overhanging. All open clamps including hookclamps should be used in a vertical orientation only.



THE FOLLOWING APPLICATIONS WILL RESULT IN THE RECOMMENDED SWL BEING REDUCED DEPENDANT ON THE TUBE SURFACE FINISH & TORQUE SETTINGS APPLIED. PROOF LOADING ON INSTALLATIONS IS RECOMMENDED.





DOUGHTY ENGINEERING LTD

**DATA SHEET**

TITLE:  
38MM ATOM HALF COUPLER

PART NOS:  
T58970 - SILVER  
T5897001 - BLACK

MATERIAL :  
ALUMINIUM

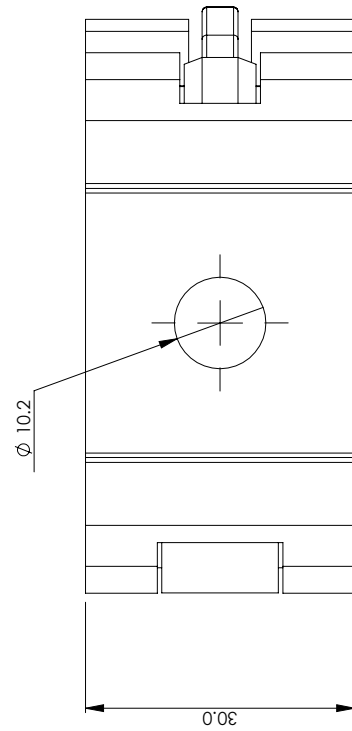
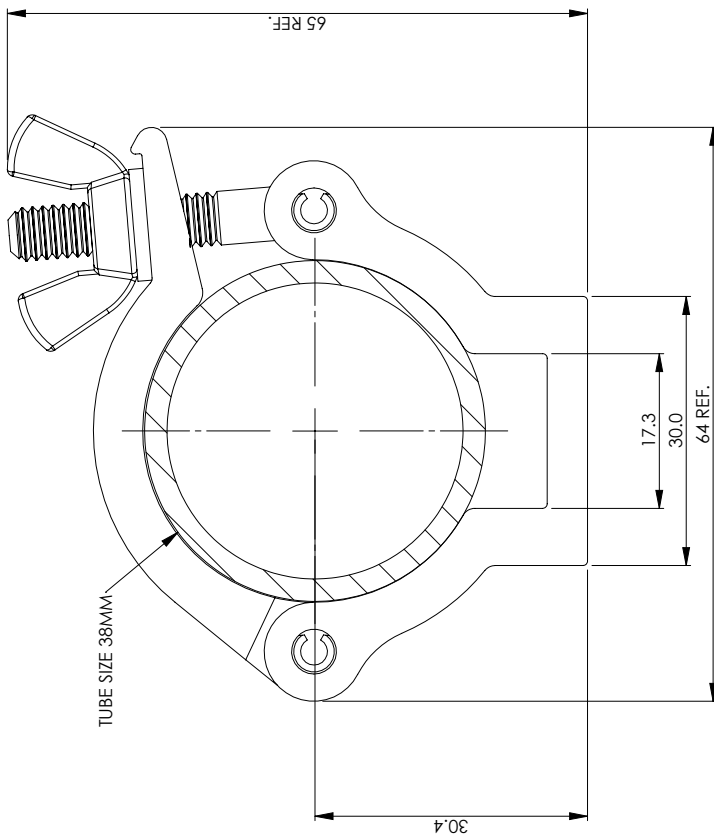
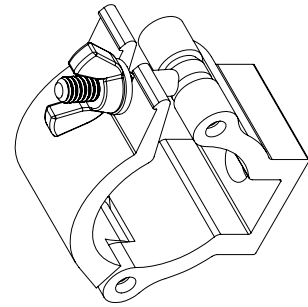
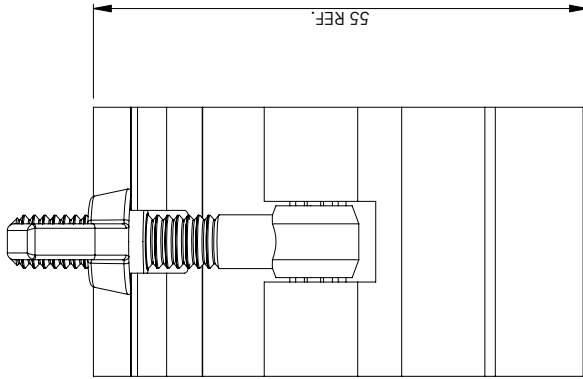
WEIGHT:  
N/A

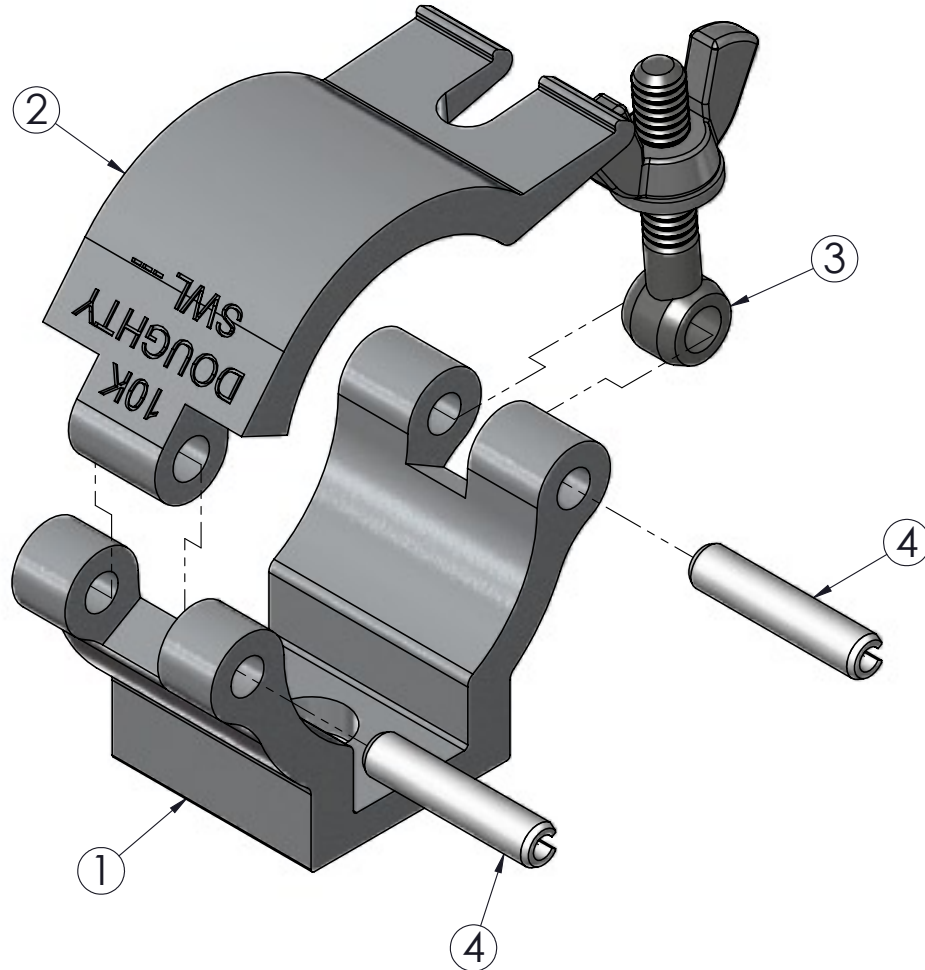
SWL:  
100KG

FINISH:  
T58970 - POLISHED  
T5897001 - POWDER PAINTED  
BLACK

NOTES:

**STRICTLY  
FOR  
REFERENCE  
PURPOSES  
ONLY**





DOUGHTY PRODUCTS MUST ONLY BE SERVICED / REPAIRED BY  
AN AUTHORISED SERVICE AGENT.  
SPARE PARTS ARE ONLY AVAILABLE TO THESE AGENTS

ITEM NO.	PART NUMBER	DESCRIPTION	Default/QTY.
1	TH134	MACHINED 38MM ATOM CLAMP BASE	1
2	TH705	MACHINED 38MM ATOM CLAMP TOP	1
3	T78010	M6 X 39 EYEBOLT	1
4	F771	M5 x 25 Stainless Steel Roll Pin	2

T58970 - 38MM ATOM  
HALF COUPLER



DRAWN	AW
DATE	22/03/2011
Rev	1

NOT TO SCALE



**Doughty Engineering Limited**

CROW ARCH LANE, RINGWOOD, HANTS, BH24 1NZ. ENGLAND  
Telephone: +44 (0) 1425 478961 Fax: +44 (0) 1425 474481  
www.doughty-engineering.co.uk  
email:sales@doughty-engineering.co.uk

**EC DECLARATION OF CONFORMITY**

Doughty Engineering Limited hereby certify that the equipment stated below has been designed to comply with all relevant sections of the specifications referenced below and complies with all the applicable Essential Requirements of the EC Directives and amendments and the National Laws and Regulations adopting these Directives.

**Description:** Ø32mm Atom Half Coupler

**Model/s:** Part No. T58970 / T5897001

**SWL:** 100Kg      **Factor:** 5:1

are in conformity with the provision of the following EC Directives:

MACHINERY DIRECTIVE 98/37/EC

**Harmonised Standards applied:**

EN 292-1-2:1991

BS EN ISO 9001:1994

Safety Tested: DIN 31000 03.79

Safety Tested: DIN EN 74 12.88

**National Technical Standards & Specifications applied:**

BS 7905-1:2001

Signed:

A handwritten signature in black ink, appearing to read "Nigel Curtis".

Date:23-04-08

Name: Nigel Curtis

Position: Technical Director

Being the responsible person appointed by the manufacturer.



DEQ 083 Rev 4

Company Registration No. London 972614  
Registered Office: Crow Arch Lane, Ringwood, Hants, BH24 1NZ  
Directors: M.B.Lister. J.C.G. Chiverton. N.D. Curtis. S.C. Wright





**Doughty Engineering Ltd**

Crow Arch Lane

Ringwood, Hampshire, BH24 1NZ

Tel: +44 (0) 1425 478961 Fax: +44 (0) 1425 474481

email: [sales@doughty-engineering.co.uk](mailto:sales@doughty-engineering.co.uk)

Web: [www.doughty-engineering.co.uk](http://www.doughty-engineering.co.uk)

Note: Whilst every effort has been made to ensure that the information contained within this manual is correct, Doughty Engineering does not accept any liability for errors or omissions. Specifications and technical data are intended for guidance purposes only and may vary.