



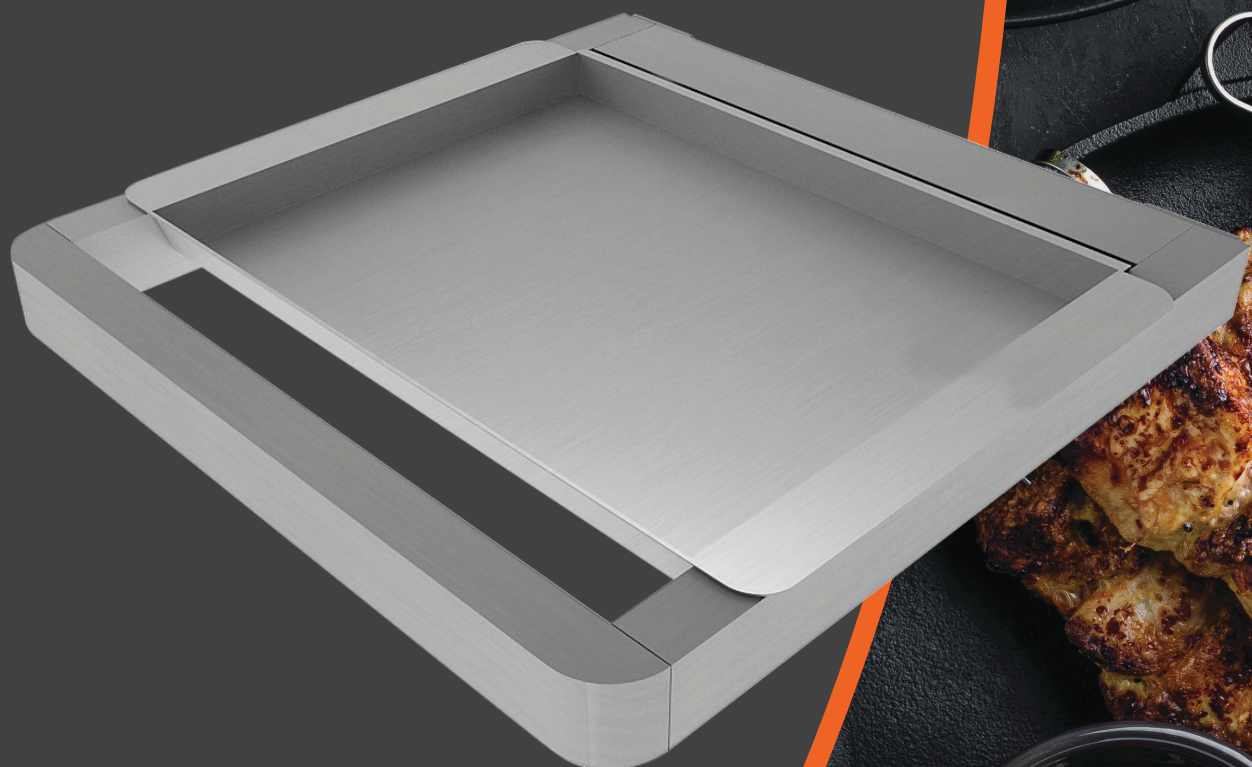
TUCKER
BARBECUES

ASSEMBLY AND INSTALLATION INSTRUCTIONS

FOR R CLASS SERIES CABINET/TROLLEY SHELVES

MODELS:

R1, R3, R4, R5, R6, RSS, R4 SS, R5 SS



**IMPORTANT – PLEASE READ ALL
INSTRUCTIONS BEFORE YOU ASSEMBLE,
INSTALL OR OPERATE THIS APPLIANCE.**



V05.12.19



CABINET/TROLLEY SHELF ASSEMBLY INSTRUCTIONS 3

WARRANTY 7

CABINET/TROLLEY SHELF ASSEMBLY INSTRUCTIONS



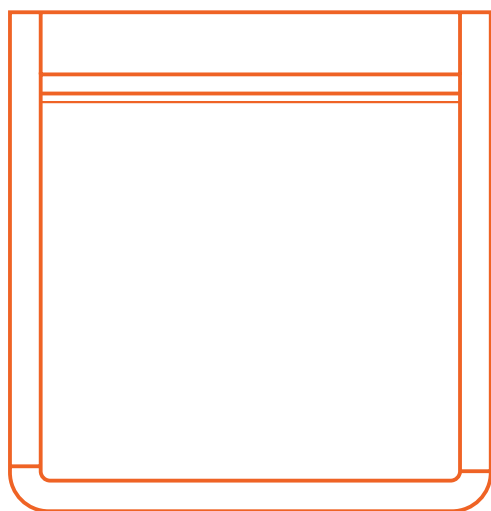
TOOLS REQUIRED FOR ASSEMBLY



Phillips head screwdriver

- Remove any plastic film protecting or covering any parts of the Shelves before assembly.
- Cut away any packaging or cable ties that may be holding components in place.
- Check you have all the correct components as listed below.

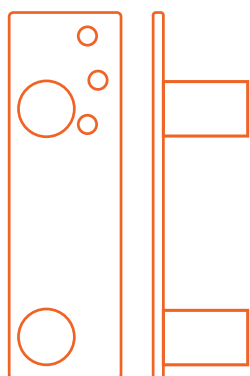
SHELF PARTS



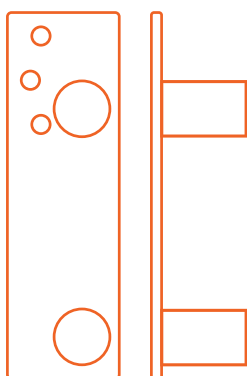
2x Shelf Arm



2x Shelf Tray



2x
Left Side Shelf
Internal Mounting



2x
Right Side Shelf
Internal Mounting



8x - Long Bolts
Bolts comes with BBQ



12x - 6mm Bolts



4x - 4mm Bolts



1x - Allen key



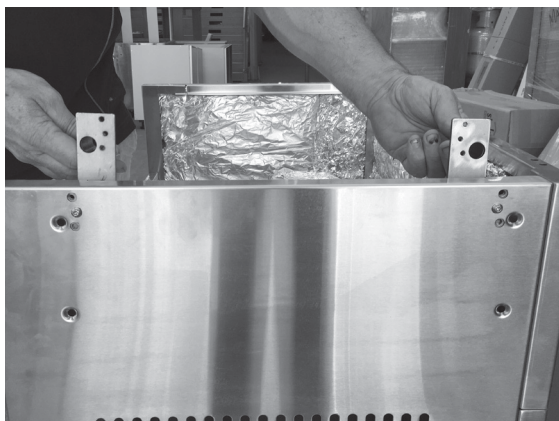
2x
Left Side Bracket
External



2x
Right Side Bracket
External

CABINET/ TROLLEY SHELF ASSEMBLY

1. Fitting the side shelves to the R Class cabinet trolley, with the side shelf internal mounting brackets there is a left and a right bracket of which they need to mirror each other.



2. These have to be fitted to the internal face of the cabinet trolley before the installation of the BBQ.



3. When fitting the internal mounting brackets you'll notice each bracket has 3 small holes which are oriented towards the top. Align the middle hole of the bracket with the hole on the internal face of the jacket and secure with the bolt provided, as per photos.



4. Install the BBQ once the internal brackets are installed by simply lifting it over and lowering it down into the trolley / jacket.



5. Using the long bolts provided with the BBQ, we need to bolt the BBQ into the cabinet trolley to secure it.

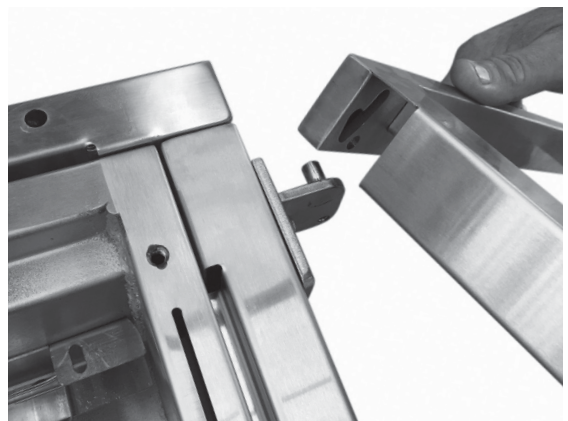
The long bolts go into the counter 4 sunk holes in each side of the trolley do not tighten the bolts too tight to avoid warping the sides of the trolley.



6. There is a left and right external side shelf bracket for the R Class side shelf. Once you have attached the internal brackets and installed the BBQ into the trolley, these brackets are placed over the large holes on the exterior of the cabinet you used to secure the BBQ into the trolley.



7. Now use 2 bolts to secure one shelf bracket to the side and Locate the pin on the external bracket into the side shelf then attach one of the brackets first, as per photos



8. Attach the second bracket using the top bolt, only allowing the bracket to swing inward to allow you to secure the pin into the shelf before tightening the second bracket to the cabinet side panel as per photos.



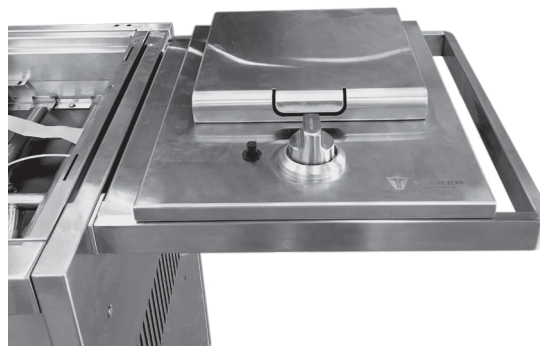
9. To fold the shelf, lift it up then lower it down.



NOTE:

If Installing a Tucker Wok burner to the side shelf you have to:

1. Remove the existing shelf tray.
2. Remove the four bolts found on the front and back Wok panels.
3. Lower the Wok burner into the shelf.



4. Secure the Wok burner into the side shelf by installing the removed bolts from the inner side.



5. After installing the Wok burner be sure to lock the side shelf by locating the grub nut under the frame of the side shelf by using a 3mm allen key.

WARRANTY

WARRANTY PERIOD

Stainless steel Shelves 10 years

NOT COVERED

The warranty does not cover the purchaser or any other person for damage malfunction or loss due to the following:

- Lack of maintenance, abuse, neglect, misuse, accident, or improper installation of this appliance.
- Scratches, dents or discoloration caused by heat, abrasive or chemical cleaners.
- Damage due to grease or fat fires.
- Surface rust.
- Cleaning and normal wear and tear.
- Unauthorized repairs during the warranty period.
- Removal or re-installation costs.

SERVICE CALLS OF THE ABOVE NATURE ARE CHARGEABLE

CONDITIONS OF THIS WARRANTY

1. The appliance is delivered to TUCKER AUSTRALIA distributors service department or authorized service agent and freight charges both ways is to be paid by the owner. No liability is accepted for loss or damage during transit.
2. The appliance is installed by a qualified person and operated and maintained in accordance with the instructions supplied. Repairs and service must be carried out by an authorized person.
3. Installation must conform to the standards laid down by the local codes or, in the absence of local codes, with AGA code AG:601 AS:5601:2002
4. No alterations or repairs are to be carried out without obtaining the distributors prior consent. Such repair or any replacement does not extend the warranty period.

5. Proof of purchase together with this warranty must be provided to verify purchase date and establish the warranty period. Only the original purchaser is covered under this warranty.
6. Where this warranty is inconsistent with any state laws, the rights of the purchaser shall prevail.
7. Parts installed from other manufacturer's products will nullify this warranty.

FOR YOUR RECORDS

Model:

Serial Number:

Retailer:

Purchase Date:

Gas type:

TUCKER AUSTRALIA PTY LTD.
138 Silverwater Road
Silverwater NSW 2128 AUSTRALIA.
PHONE: (+612) 9748 8368
FAX: (+612) 9748 8138
WEB SITE: www.tuckerbbq.com.au
EMAIL: mail@tuckerbbq.com.au



TUCKER
BARBECUES

TUCKER AUSTRALIA PTY LTD.
138 Silverwater Road
Silverwater NSW 2128 AUSTRALIA.
PHONE: (+612) 9748 8368
FAX: (+612) 9748 8138
WEB SITE: www.tuckerbbq.com.au
EMAIL: mail@tuckerbbq.com.au