



**TUCKER**  
AUSTRALIA



**TUCKER**  
AUSTRALIA



### **KITCHEN INTERGRATION**

Any tucker GTR trolley BBQ can be full intergrated into our outdoor kitchens. Simply Remove the sideshelves and our BBQs integrate semlessly into one of our Custom Made Alfresco Kitchens.



HIGH PERFORMANCE BARBECUES AND OUTDOOR KITCHEN

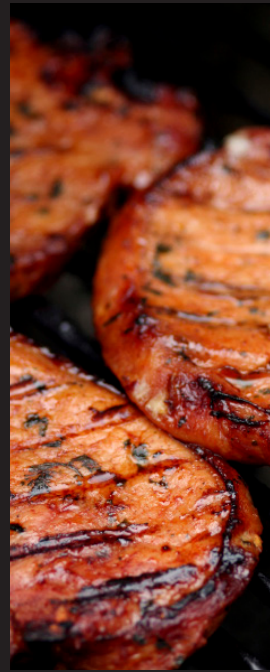
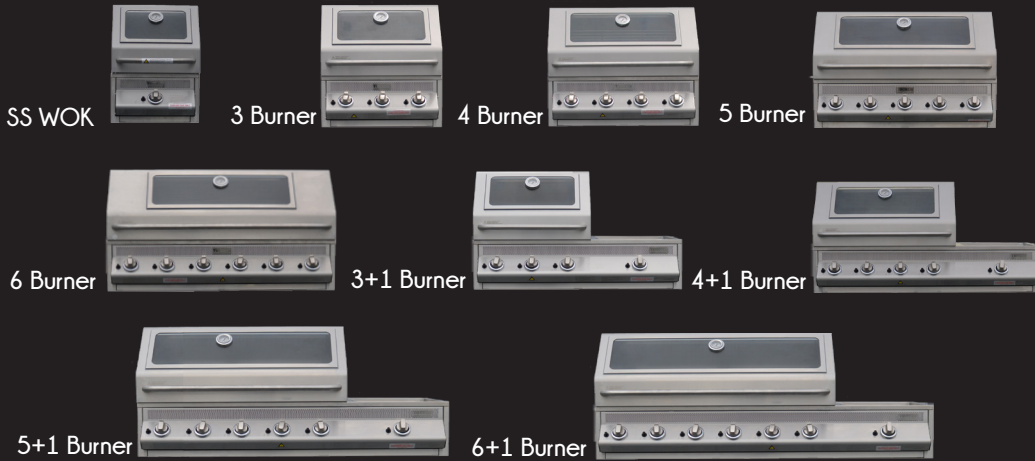
[sales@tuckerbbq.com.au](mailto:sales@tuckerbbq.com.au) 1300 300 227

[www.tuckerbbq.com.au](http://www.tuckerbbq.com.au)

Locations: Mona Vale / Silverwater / Taren Point



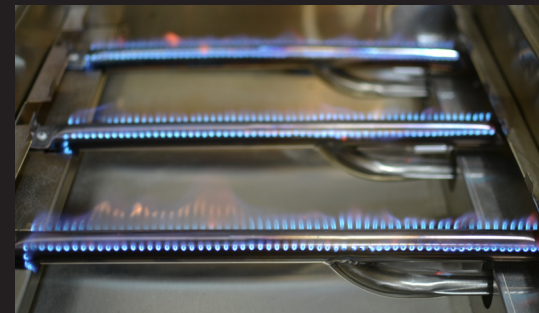
# BUILT IN RANGE



# TROLLEY RANGE



## STAINLESS STEEL BURNERS AND FLAME GUARDS



Durability and efficiency are key features of the GTR Barbecue which is why we have replaced the old Heavy cast iron, gas guzzling burners with new high performance and more efficient 304 grade stainless steel burners. These burners are made from extruded tube and use 20% less gas than the older cast iron type burners. In the GTR Range, Tucker decided to add one more burner than they would have previously into every fire box making these barbecue more powerful and by doing so the burners are closer together which also reduces cool spots between burners.

## STAINLESS STEEL COOKING SURFACES



The GTR range barbecues come with a heavy duty stainless steel hot plate and grills. We believe there is no substitute cooking surface to stainless steel, as it is non porous which makes it more hygienic than cast iron and it is easy to clean and it will not flake like cast iron or steel will.



## BBQ OPTIONS

Any tucker GTR trolley BBQ can be Customised with a powerful wok burner. you also have the option to purchase a hinged flat lid for your bbq the + models can be ordered with two roasting hoods. Perfect for large families