



All-Terrain Tractors and Transporters

The UK's Only All-Terrain Tractor Specialist



When you need an all-terrain tractor that is capable of handling a wide variety of implements, safety on hillsides or really wet (boggy) terrain, with a day-in-day-out reliability factor that can demonstrate versatility in any environment, take a look at the Goldoni **E Series** of equal-wheeled Quad Tractors.

- **Strong**
- **Agile**
- **Versatile**
- **All-Terrain**
- **Economical**
- **Easy to Maintain**
- **Low Centre of Gravity**



A range of isodiametric tractors that incorporates many large tractor features into a compact size. From the E20 to the E60, Goldoni's "Quad" Tractor range provides constant 4-wheel drive, full hydraulics, linkages and PTO's which give these small but powerful tractors the ability to work almost anywhere. The addition of low ground pressure flotation tyres gives increased stability on slopes due to their low centre of gravity, as well as a gentle touch on softer land.



Keestrack brand

E 20 SN

Ideal for working between narrow rows and in polytunnels



ENGINE

Lombardini 12LD 477/2 air-cooled
2 Cyl: 15kW, 20.4 hp
Tier IIIA
Direct Injection

TRANSMISSION

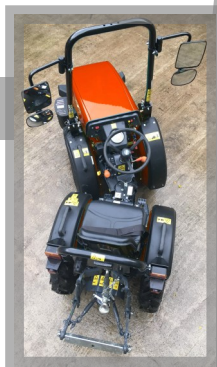
6 forward + 3 reverse gears
Differential on both axles
Constant 4-wheel drive
Central articulation for confined areas

HYDRAULICS

540 / 750 rpm PTO
18.5 ltrs/min pump flow rate
Cat 1 rear linkage
500 kg lift capacity

DIMENSIONS

Weight; 750 kg
Length: 2.5m
Width: min. 0.8m,
max. 1.02m



The new E20 SN is built for working in confined areas such as orchards, fruit farms, christmas tree plantations, walled gardens - anywhere that normal access is limited.

At only 80cm wide but with constant 4-wheel drive, articulated steering and oscillating chassis, the E20SN will work in the tightest of spaces.



**World's
narrowest
tractor!**



E 20 SN QUAD

The world's smallest all-terrain quad tractor for all ground conditions



ENGINE

Lombardini 12LD 477/2 air-cooled
2 Cyl: 15kW, 20.4 hp
Tier IIIA
Direct Injection

TRANSMISSION

6 forward + 3 reverse gears
Differential on both axles
Constant 4-wheel drive
Central articulation for confined areas

HYDRAULICS

540 / 750 rpm PTO
18.5 ltrs/min pump flow rate
Cat 1 rear linkage with 500 kg lift capacity
Optional double spool valve can be fitted

DIMENSIONS

Weight: 760 kg
Length: 2.5m
Width: 1.2m

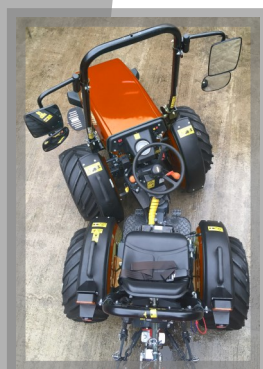


On 26-12x12" low ground pressure flotation tyres, for "go-anywhere" capability, thanks to its front axle which swings 16°, allowing the tractor to "hug" the ground even on the roughest of terrain.

Its low centre of gravity and stability in particularly difficult working conditions gives the E20 Quad all-terrain access all year round.



**The UK's
best-selling
equal-wheeled
tractor!**



E 50 SN / RS

Articulated or front steering



ENGINE

Lombardini LDW 1603 water-cooled
3 Cyl: 28kW, 38 hp
Step 3A

TRANSMISSION

6 forward + 3 reverse gears
Differential on both axles
Constant 4-wheel drive
Central articulation-SN, Front steer-RS

HYDRAULICS

540 / 750 rpm PTO
25 ltrs/min pump flow rate
Cat 1 rear linkage
1200 kg lift capacity

DIMENSIONS

Weight; 1300-1350 kg
Length: 2.6m-3.0m
Width: min. 1.0m on SN model
max. 1.54m on RS model

E 50 SN/RS

On 31-15.50x15" low ground pressure flotation tyres, for "go-anywhere" capability, thanks to its front axle which swings 16°, allowing the tractor to "hug" the ground even on the roughest of terrain.



A
True
All-Rounder!

Its compact size and build allows it to maintain a low centre of gravity, whilst guaranteeing a high level of stability in particularly difficult working conditions and allowing a wide variety of machinery to be used.

**E 50
SN/RS**



- **Power**
- **Simplicity**
- **Efficiency**



E 60 RS

Designed for the people
who drive them



ENGINE

VM D703 E3 water-cooled
3 Cyl: 35.3 Kw, 48 hp
Step 3A
Direct Injection

TRANSMISSION

32 speed, 16 + 16 gears synchronised
with reverse shuttle
Differential on both axles
Constant 4-wheel drive

HYDRAULICS

Independent 540 / 750 rpm PTO
38 ltrs/min pump flow rate
Cat 1/2 rear linkage
1500 kg lift capacity

DIMENSIONS

Weight; 1650 kg
Length: 3.25m
Width: min. 1.106m,
max. 1.404m
280/70x18" std wheels

E 60 RS

On 150-55x17" low ground
pressure tyres for the
ultimate "go-anywhere"
capability, thanks to its
front axle which swings
16°, allowing the tractor
to "hug" the ground
even on the roughest of
terrain.



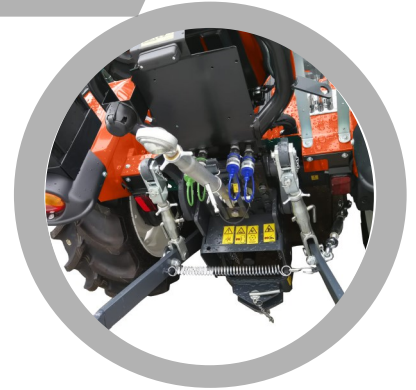
**A small low
centre of gravity
tractor with a
big tractor
attitude!**

The E60RS with standard front steering, its compact size and build allows it to maintain a low centre of gravity, whilst guaranteeing a high level of stability when using heavy machinery, in particularly difficult working conditions.

**E 60
RS**



- **Strong**
- **Agile**
- **Compact**



Coming Soon ...



Keestrack brand

E SERIES - UP TO 100 HP



“We at Goldoni believe that time is our friend. When we make a machine, we do so because we are convinced that it must last a long time and always guarantee the safety and reliability for which you chose it.” The best way to lengthen the life of your tractor and reduce down time to the very minimum is to rely on the **Goldoni Routine Maintenance Service.**

Only Goldoni has stocks that ensure the part you need will still be available for up to 40 years after your tractor model is no longer produced. Goldoni provides an ON-LINE ordering system for our workshops and can also make urgent deliveries for speedier repairs.”

Dealer Contact:

To discuss your requirements in more detail, please do not hesitate to contact us at:



C.T.M.



Conservation Technology & Machinery Ltd

Units 1 & 2 Brocca Bank, Low Row, Richmond, North Yorkshire, DL11 6PF

Tel: 01748 886622

www.goldonitractors.co.uk

Email: sales@ctmltd.co.uk