

POLIVAC

INTERNATIONAL PTY LTD

Polivac SV25 SuperVac SLOW SPEED VACUUM SANDER



Operations Manual & Trouble-Shooting Guide

SuperVac Canister Assembly Instructions



1. Attach vacuum canister and dust separator canister to handle as shown.

2. Secure canisters using brackets and bolts provided.

3. Connect vacuum hose and dust separator hose as shown

How to Operate a Sandivac SV25 or SV30 Supervac



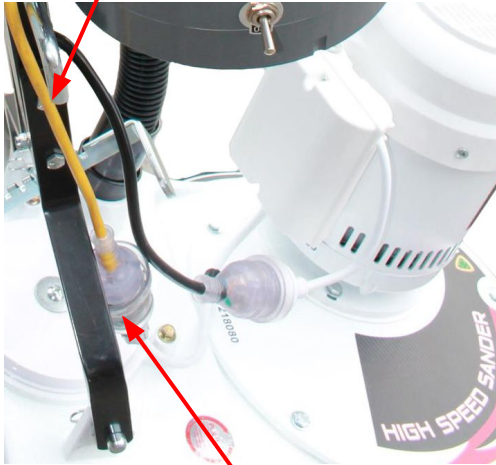
Please find the following correct procedure for the operation of the Polivac SV25 or SV30 Sander

1. Plug in power cable. Power supply will be visible via the neon indicator at the power plug and also the red light on the handle.
2. Tilt the machine back by using the handle.
3. Place the sanding disc onto the pad to the pad holder
4. Once the Disc is fitted stand the machine back up.
5. Slightly lift the handle up, and manoeuvre the wheels backwards and up out of the way (the wheels must be off the floor when polishing).
6. The handle height must be adjusted to suit individual operators body proportions. Adjust the ergo handle, to the correct height by placing your foot or hand on the ratchet lever then positioning the handle. The correct height of the handle is around the groin region.
7. When the handle is set at the correct height, the arms should grip the handle in a comfortable, but loose manner (if your arms are bent at the elbows this is an indication that you are applying too much effort to control the machine) Re-adjust the handle.
8. To start the machine, first you must disengage the red safety button that is next to the hand trigger, then grasp either of the red triggers, and the motor will engage the brush. Do not force the trigger without first releasing the safety button as this will damage the safety release in the trigger mechanism. Once the machine is on, the safety button can be released.
9. To facilitate the correct swinging motion of the machine, tip or lift the handle slightly forward to get the sander to move right and lower the handle to get the machine to move towards the left. This requires minimal effort. So, if you are having difficulty controlling the machine, check that you have the handle set at the correct height or your pad holder or sanding disc mechanism is damaged.
10. To use the vacuum system whilst sanding, switch the vac motor to the on position. The vacuum will be activated upon starting the machine.

**SV
SuperVac
Parts List**

TOGGLE SWITCH
VPV191T

2 CORE LEAD
VPV477



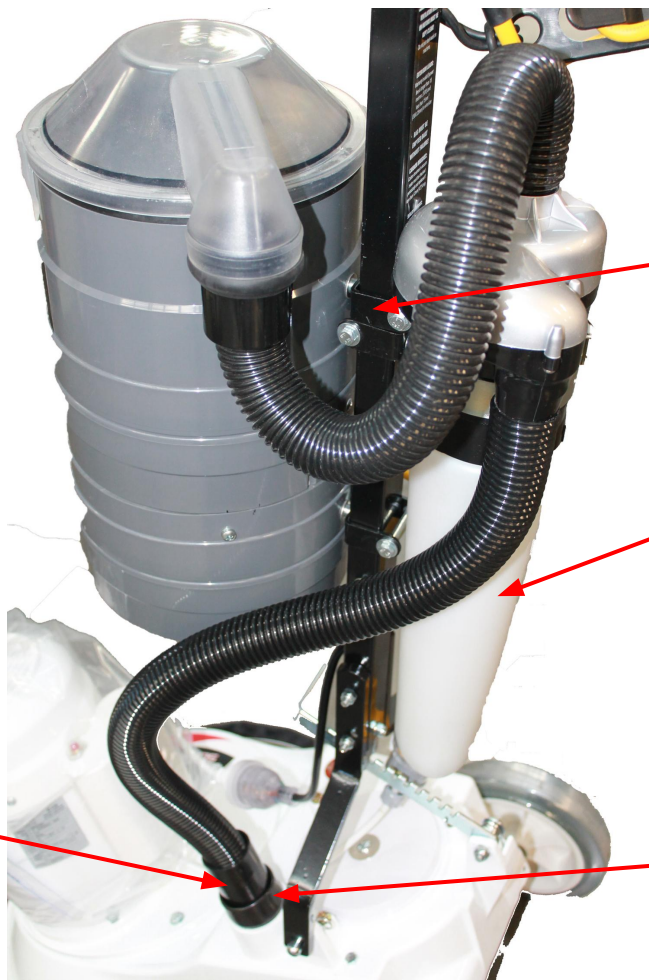
3PIN FEMALE
250V 10A
VLB117



HOSPITAL GRADE
VACUUM CANISTER
VPV272R

PVC HOSE
(CUT TO LENGTH)
PVS121

MOTOR COVER
VPV188



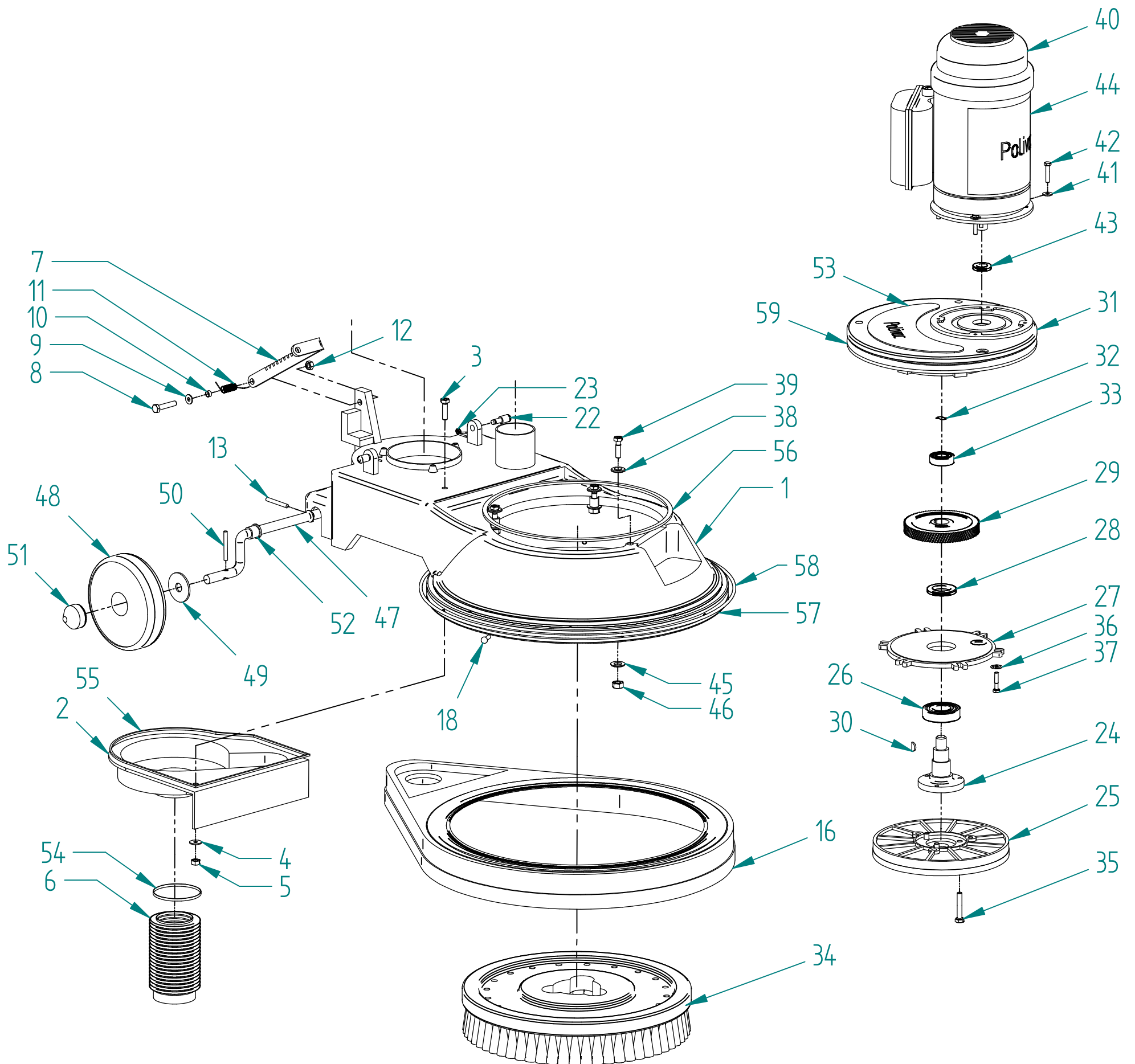
U-BRACKET
VPA879

TURBO DUST
SEPARATOR
PART CODE:
SEPARATOR

HOSE CUFF
32MM to 38MM
PVS095

HOSE CUFF
38MM
PPR083

Drive & Base Assembly



Drive & Base Assembly - Part List

| No | Code | Description |
|----|--------|---|
| 1 | VPV216 | Skirt-Painted |
| 2 | VPV190 | Fan Housing |
| 3 | AAA584 | Set Screw 1/4" x 1" Zinc |
| 4 | AAG236 | Washer 1/4" x 5/8" Zinc Bright |
| 5 | AAF140 | Nut Nyloc 1/4" UNC |
| 6 | VPV008 | Gaiter |
| 7 | VPA138 | Lever-Ratchet |
| 8 | AAD061 | Bolt 5/16" x 1.1/2" Zinc |
| 9 | AAG385 | Washer 5/16" x 7/8" 16G Z/P |
| 10 | VPA782 | Spacer |
| 11 | VPA139 | Torsion Spring |
| 12 | SLB043 | Nut Nyloc 5/16" UNC |
| 13 | VPV218 | Retaining Pin-Axle |
| 16 | VPV090 | Skirt Assy (PV25/PV25TS) for SV25/SV30 VPV090 BLK |
| 18 | SLB035 | Rivet ASL 5-6 |
| 22 | VPA950 | Handle Retaining Pin |
| 23 | VPA954 | Clip |
| 24 | VPA116 | Gear Shaft |
| 25 | VPA412 | Quick Release Adaptor [PV25] |
| | VPA374 | Brush Coupling [SV25,SV30] - Not Pictured |

Drive & Base Assembly - Part List

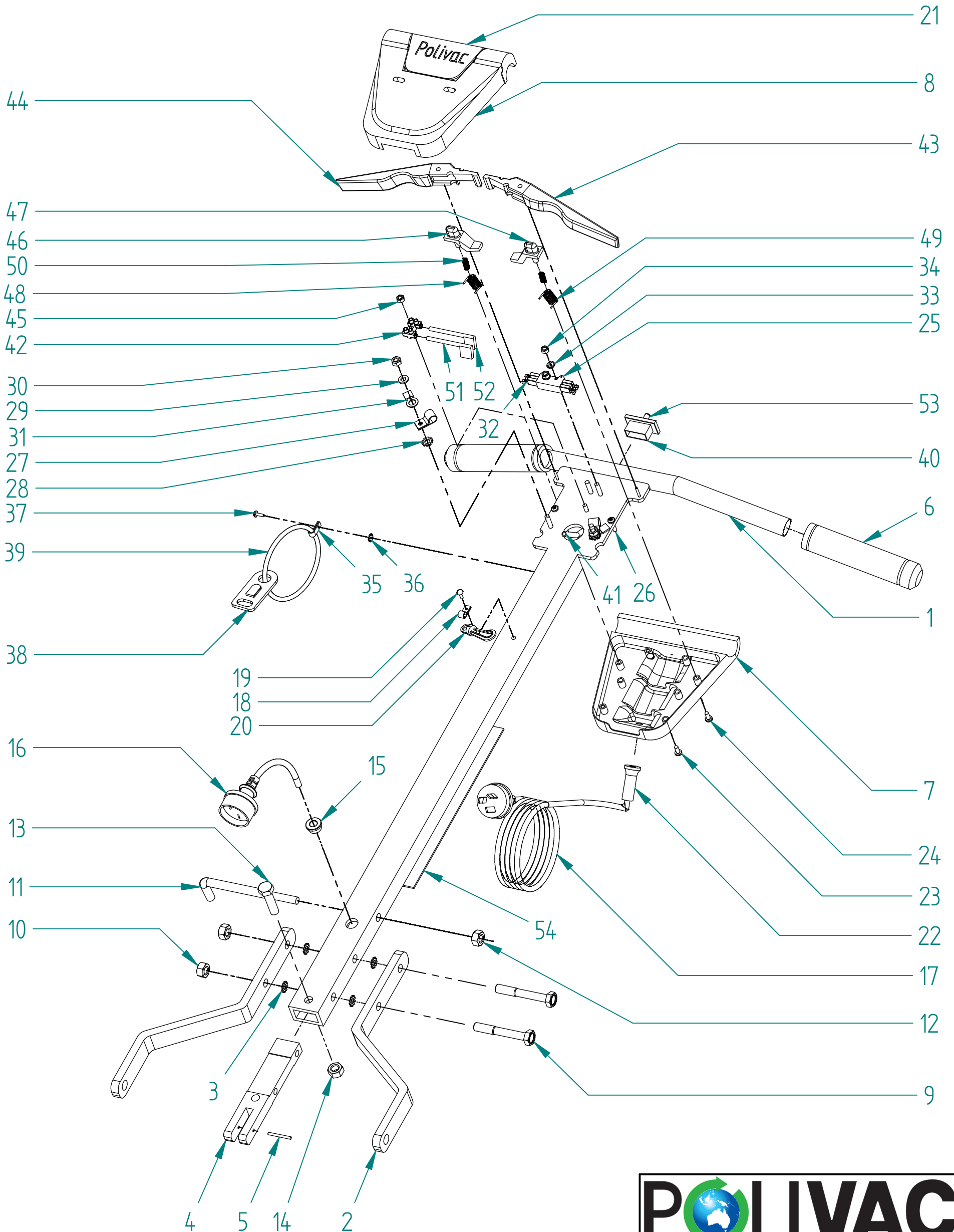
| No | Code | Description |
|----|-----------|--|
| 26 | VPA114 | Bearing-Bottom |
| 27 | VPA113 | Gear Cover |
| 28 | VPA118 | Seal-Bottom |
| 29 | VPA411 | Drive Gear |
| 30 | VFB115 | Key |
| 31 | VPA495 | Base Luggless |
| 32 | VPA121 | Washer Wavy |
| 33 | VPA570 | Bearing-Top |
| 34 | PC40B1 | Brush Assembly |
| 35 | AAA628 | Cap Screw 5/16" x 1" Socket HD [PV25] |
| | AAA635 | Cap Screw 5/16" x 3/4" Socket HD [SV25,SV30] |
| 36 | VPA122 | Washer TAB 1/2" OD x 1/4" ID |
| 37 | AAA564 | Bolt 1/4" NC x 3/4" Zinc High Intensity |
| 38 | AAG236 | Washer 1/4" x 5/8" Zinc Bright |
| 39 | AAD041 | Bolt 1/4" x 1.1/4" Zinc |
| 40 | VPA975CMG | Motor [PV25]{VPV525CMG - Motoring gearbox} |
| | VPA011CMG | Motor [SV25]{VPV522CMG - Motoring gearbox} |
| | VPA013CMG | Motor [SV30]{VPV574CMG - Motoring gearbox} |
| 41 | AAG236 | Washer 1/4" x 5/8" Zinc Bright |
| 42 | AAA564 | Bolt 1/4" NC x 3/4" Zinc High Intensity |
| 43 | VPA104 | Oil Seal Top |
| 44 | LAB001 | Motor Label [PV25, SV25] |
| | LAB002 | Motor Label [SV30] |
| 45 | AAG237 | Washer 1/4" x 3/4" Zinc Bright 14x34 BSWZ |
| 46 | AAF140 | Nut Nyloc 1/4" UNC |
| 47 | VPV170 | Axle |
| 48 | VPV166 | Wheel-Rubber Tyre |
| 49 | AAG470 | Washer 1/2" x 1" Zinc Bright |



Drive & Base Assembly - Part List

| No | Code | Description |
|----|--------|--------------------------|
| 50 | VPA355 | Roll Pin 3/32" x 7/8" ZP |
| 51 | GCA292 | Ratchet Cap 12mm |
| 52 | VWA634 | Bush Nylon |
| 53 | LAB005 | Label [PV25] |
| | LAB004 | Label [SV25] |
| | LAB010 | Label [SV30] |
| 54 | VPV459 | Cable Tie |
| 55 | VPV106 | Gasket 5mm x 9mm |
| 56 | VPV251 | Gasket 10mm x 9mm |
| 57 | VPV087 | Buffer-Skirt |
| 58 | VPV239 | Insert-Buffer |
| 59 | VPA001 | Weight [SV25, SV30] |

VPV610 Handle



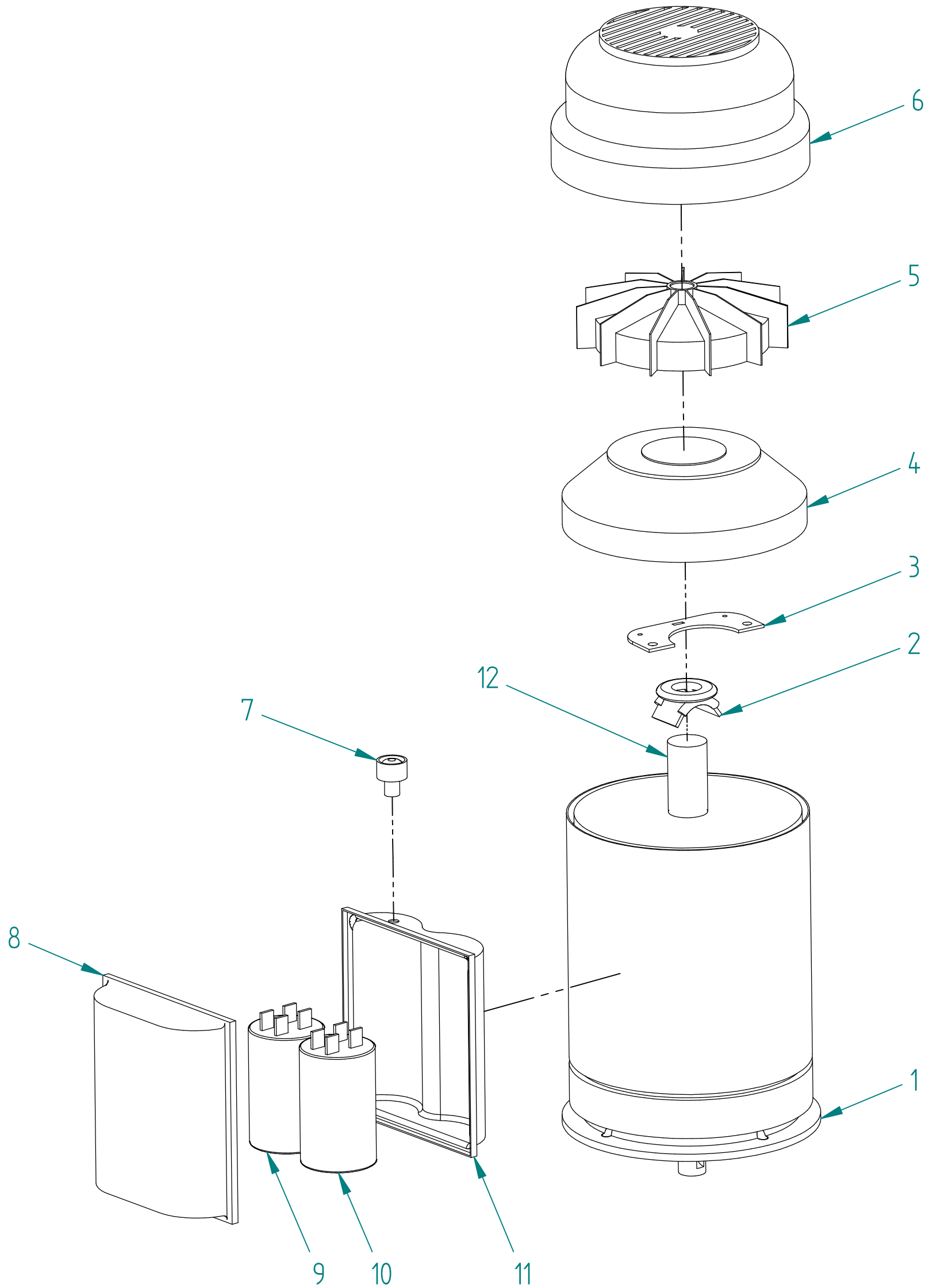
VPV610 Handle - Part List

| No | Code | Description |
|-----------|-------------|-----------------------|
| 1 | VPV611 | Handle Stem |
| 2 | VPA767 | Fork |
| 3 | AAJ460 | Star Washer |
| 4 | VPA231 | Tongue Assy |
| 5 | VPA821 | Roll Pin |
| 6 | VPV605 | Handle Grips |
| 7 | VPV601 | Rear cover |
| 8 | VPV600 | Front Cover |
| 9 | AAD039 | Bolt |
| 10 | AAF140 | Nut Nyloc 1/4" UNC |
| 11 | VPA765 | Lead Hook |
| 12 | AAF140 | Nut Nyloc 1/4" UNC |
| 13 | AAD041 | Bolt |
| 14 | AAF140 | Nut Nyloc 1/4" UNC |
| 15 | VPA841 | Grommet |
| 16 | VPA618 | Stem Lead Assy |
| 17 | VPV475 | Mains Lead Assy (15m) |
| 18 | PVS070 | Plastic Clamp |
| 19 | AAK829 | Pop Rivet |
| 20 | VPV120 | Dust Bag Hook |
| 21 | VPV607 | Polivac Handle Label |
| 22 | ECG157 | Lead Protector |
| 23 | AAA523 | Screw |
| 24 | AAA522 | Screw |
| 25 | VPA631 | Cherry Switch |
| 26 | AAA525 | Screw |

VPV610 Handle - Part List

| No | Code | Description | No | Code | Description |
|-----------|-------------|--------------------------|-----------|-------------|--------------------|
| 27 | VPA622 | Clamp | 53 | ZDR078 | Neon Indicator |
| 28 | AAJ451 | Star Washer | 54 | VPV562 | Label |
| 29 | AAG150 | Washer | | | |
| 30 | AAE271 | Nut | | | |
| 31 | AAM702 | Earth Terminal | | | |
| 32 | AAM704 | Flag Terminal | | | |
| 33 | AAJ002 | Star Washer | | | |
| 34 | AAE200 | Nut HVHD 1/8" ZP Pressed | | | |
| 35 | VVA019 | Clamp | | | |
| 36 | AAJ451 | Star Washer | | | |
| 37 | AAK829 | Pop Rivet | | | |
| 38 | BV8003 | Strain Relief | | | |
| 39 | BV8004 | 'O' Ring | | | |
| 40 | VPA639 | Cap | | | |
| 41 | VPA926 | Sleeve Insulation | | | |
| 42 | AAM601 | Terminal Block | | | |
| 43 | VPV602 | Left Trigger | | | |
| 44 | VPV603 | Right Trigger | | | |
| 45 | AAE200 | Nut HVHD 1/8" ZP Pressed | | | |
| 46 | VPV604R | Safety Button Right | | | |
| 47 | VPV604L | Safety Button Left | | | |
| 48 | VPA632R | Spring Right | | | |
| 49 | VPA632L | Spring Left | | | |
| 50 | VPV606A | Spring | | | |
| 51 | VPA626 | Blue Wire | | | |
| 52 | VPA628 | Brown Wire | | | |

Drive Motor



Drive Motor Parts List

| No | Code | Description |
|-----------|-------------|--|
| 1 | VPV810CMG | Range Endshield (Drive End) |
| 2 | VPV806CMG | Centrifugal Switch |
| 3 | VPV805CMG | Switch Contact Plate |
| 4 | VPV811CMG | Non Drive Endshield |
| 5 | VPV812CMG | Cooling Fan |
| 6 | VPV813CMG | Cowl |
| 7 | VPV807CMG | Manual Reset |
| 8 | VPV818CMG | Capacitor |
| 9 | VPV803CMG | Run Capacitor |
| 10 | VPV804CMG | Start Capacitor |
| 11 | VPV817CMG | Capacitor Box Base |
| 12 | VPV224CMG | Rotor (Coro & Shaft) - Not Available as spare part |