



Product Name: Design Tatami

Size Variations(*):

Edoma

Width: 88 cm

Length: 176 cm

Thickness: 5.5 cm

Honken

Width: 95 cm

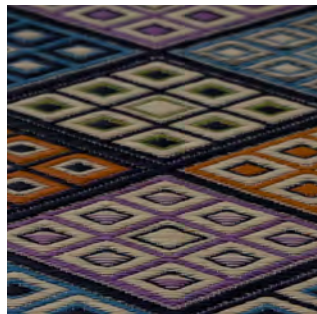
Length: 190 cm

Thickness: 5.5 cm

Surface Material: Igusa (Japanese Rush)

Place of origin: Kyushu, Japan

*Size is customizable.



IKEHIKO
DESIGN TATAMI

IKEHIKO CORPORATION | SINCE 1886
1052 MIYAMATSU
OKI-MACHI, MIZUMA-GUN, FUKUOKA, JAPAN
833-0041
EMAIL: INQUIRY@IKEHIKO.CO.JP
TEL: +81 0944 32 1203
INSTAGRAM: IKEHIKO_JAPAN

IKEHIKOJAPAN.COM

Traditional TATAMI

Traditional tatami mat is the beloved classic that has kept its charm for over 300 years. The raw material "igusa" is grown right here in Kyushu. Our close proximity to the production site and 130 years of experience make us trusted for delivering the best quality tatami mats that last over 20 years.



DESIGN Tatami

We are being playful with these mats. Adding colorful design twists to tatami, we wish at redefining the concept of "washitsu" (tatami rooms). These design tatami mats can be combined with classic tatami mats to liven up "washitsu" rooms, or used as standalone decorating pieces to define any spaces with stylish designs from Japan

ABOUT IKEHIKO CORPORATION:

WE DESIGN AND MANUFACTURE ALL IGUSA PRODUCTS FROM THE YEAR OF 1886. STARING FROM A SMALL TATAMI SHOP, WE HAVE GROWN INTO A FULL-FLEDGED HOME PRODUCT COMPANY WITH THE LARGEST MARKET SHARE IN THE INDUSTRY.