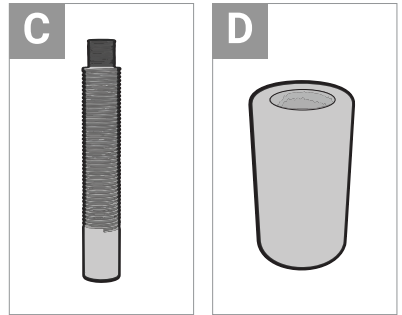
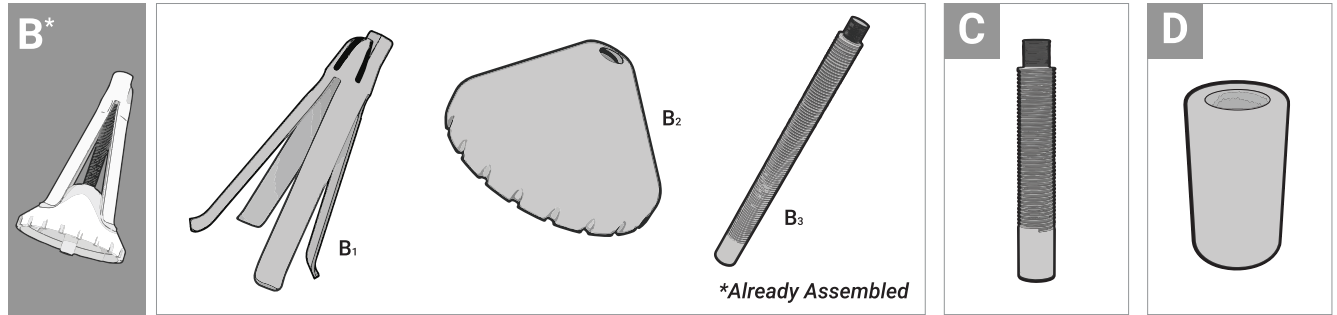
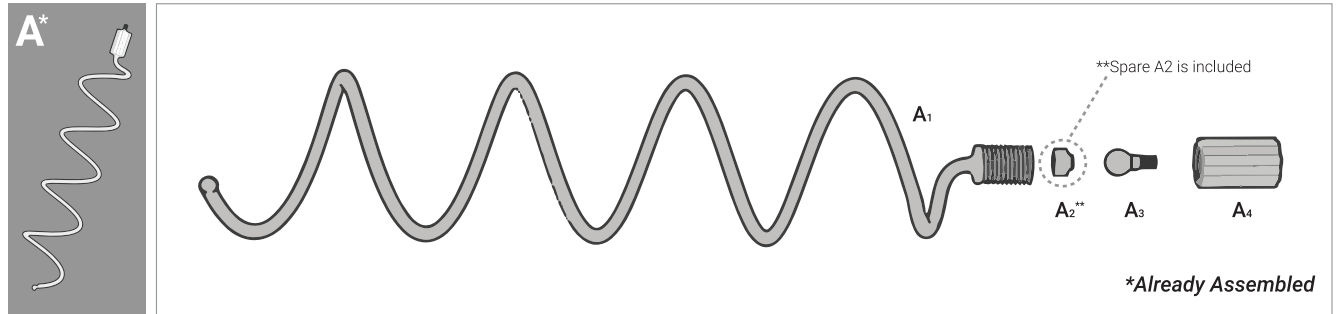




www.VillageLighting.com

ADJUSTABLE TREE TOPPER SUPPORT

MODEL #: V-11103-RS V3 | Patents Pending



! IS YOUR TOPPER CONE LOOSE?

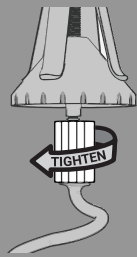


1

TIGHTEN THE CONE & ROD CLOCKWISE

2

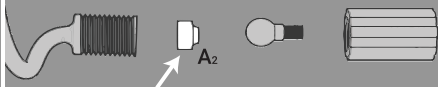
TIGHTEN THE BALL JOINT HOUSING



3

STILL LOOSE? REMOVE THE CONE AND HOUSING. CHECK IF PART A2 IS INCLUDED.

IF MISSING, USE SPARE A2 TO REPLACE

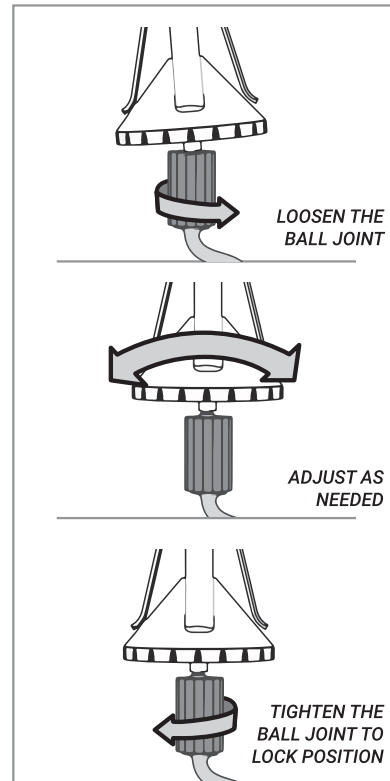


ATTACH THE ADJUSTABLE CONE*



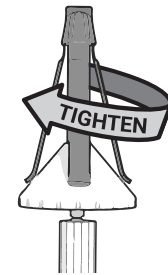
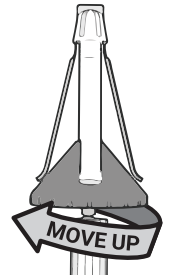
*Assembly may vary depending on your topper. See next page for configurations.

LEVEL THE CONE



THREAD DIRECTIONS

LOWER CONE IS REVERSE THREADED

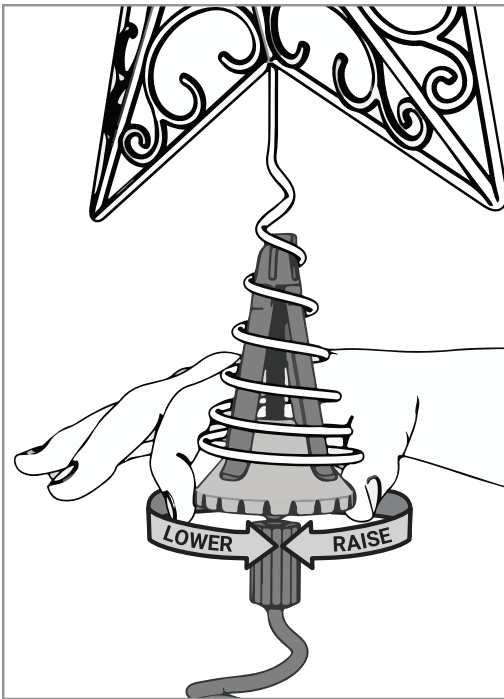


UPPER CONE IS STANDARD THREADED

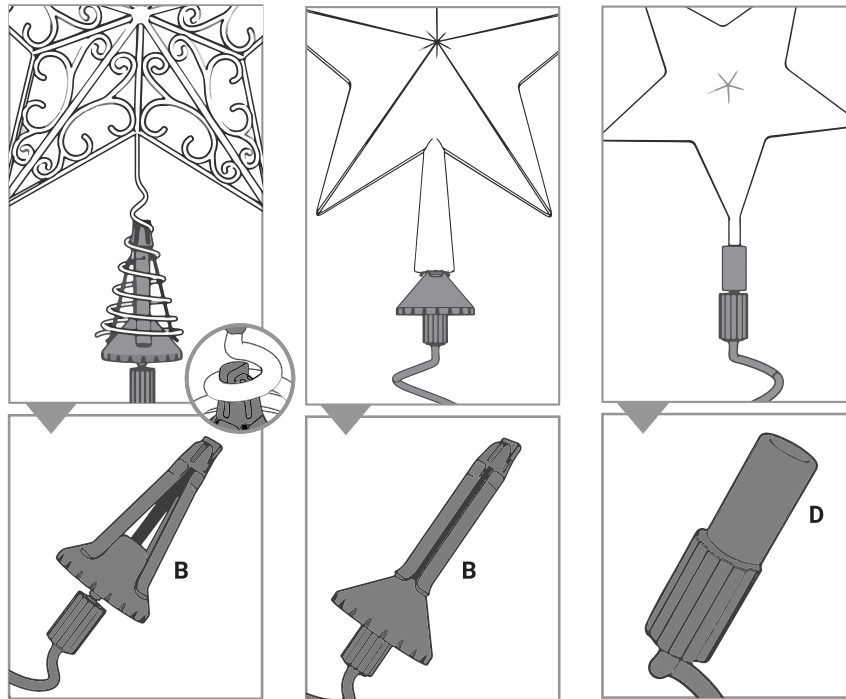
CENTER ROD CONNECTION TO BALL JOINT IS STANDARD THREADED



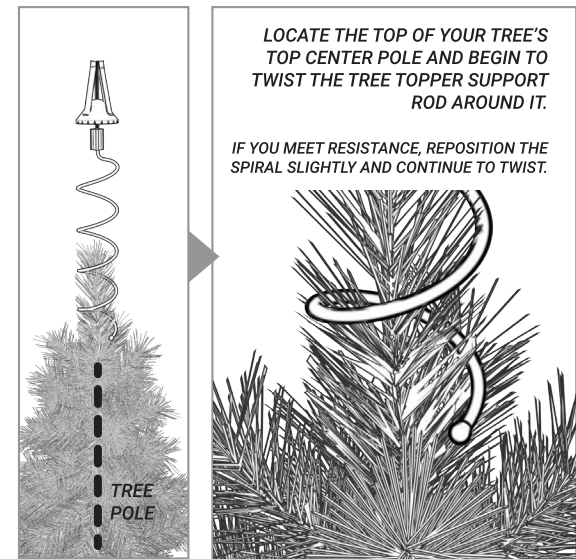
ROTATE CONE TO ADJUST SIZE



CONFIGURATIONS *CUSTOMIZE ASSEMBLY TO MATCH YOUR TOPPER STYLE*



INSTALL ONTO YOUR TREE

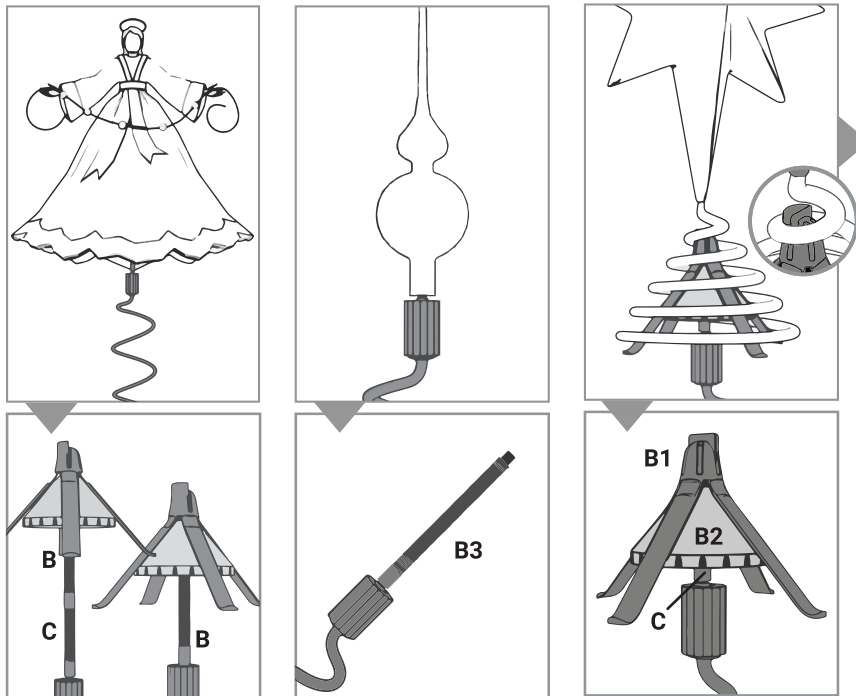


LOCATE THE TOP OF YOUR TREE'S TOP CENTER POLE AND BEGIN TO TWIST THE TREE TOPPER SUPPORT ROD AROUND IT.

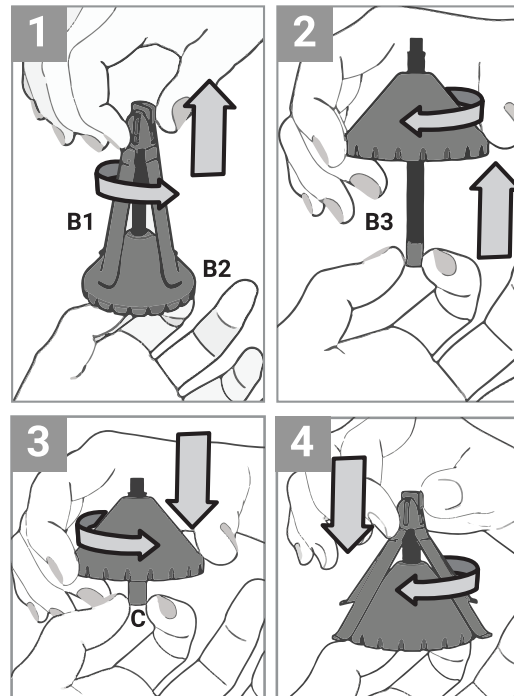
IF YOU MEET RESISTANCE, REPOSITION THE SPIRAL SLIGHTLY AND CONTINUE TO TWIST.

CONTINUE TO TWIST UNTIL THE TREE TOPPER SUPPORT ROD IS AS CLOSE TO THE TOP OF THE TREE TOP CENTER POLE AS POSSIBLE.

CONFIGURATIONS (CONTINUED)



SWITCH TO SHORT ROD (PART C)



NEED MORE HELP?
WATCH VIDEOS
HERE:

