

Included with Relocation Kit:

(A) Threaded Sleeves



(B) Tubular Hose Barbs



(C) Compression Tube Fittings

(replaces
Zerk fittings)



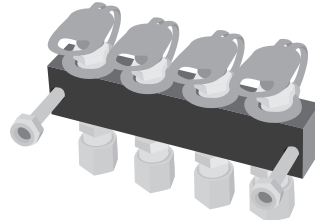
(D) 3m Pre-Filled Hose per fitting

(12,184 PSI/840 BAR rated tubing)



(E) Milled Aluminum Point Manifold Block

(includes compression fittings, mounting
hardware, grease zerks, and dust caps)



Assembly Tools:

12mm
Wrench

10mm
Wrench

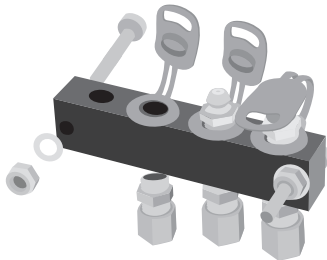
Hose Cutting
Tool

1. Cut hose (D) to length.

We recommend a cutting tool that can make a good, straight cut, but a sharp pocket knife can work in a pinch.



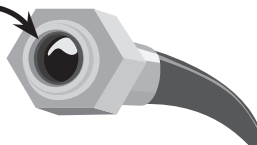
2. Assemble relocation manifold block (E). Use the mounting hardware to secure it in place.



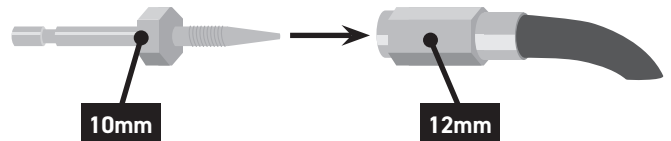
3. Screw the threaded sleeve (A) onto the hose (D) (sleeve is reverse, or counterclockwise, threaded) until the threaded sleeve is bottomed out on hose.



You should be able to see the hose inside the sleeve.



4. Insert the tubular hose barb (B) into the sleeved end of the hose. Use a 12mm wrench to hold the sleeves and a 10mm wrench to tighten the barb (regular threaded) into the hose.



Completed hose end:

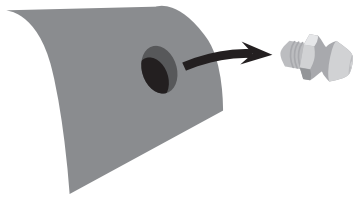
(The sleeve (A) outside the hose and the barb (B) inside the hose create a tight, secure connection.)



5. Repeat steps 3 and 4 on other end of the hose.



6. Unscrew the Zerk fitting you wish to relocate.



Is it a standard 1/8 NPT where the Zerk threads into the machine? If not, an adaptor will be needed.

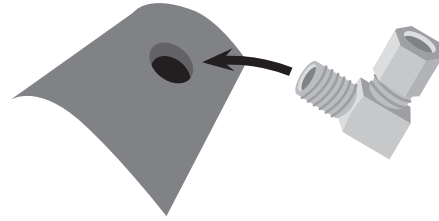
LockNLube offers a full range of individual adaptors for any size Zerk (see below).

Or you can scan this QR code to go to our complete adaptor collection on our website:

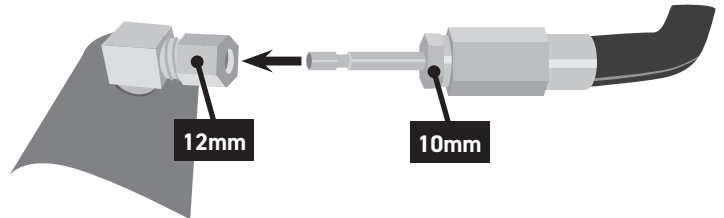


SKU	Description
43716	1/8" NPT (M) X 1/8" NPT(F) 45 Degree
44701	1/8" NPT (M) X 1/8" NPT(F) 90 Degree
51942	1/4"-28 Taper (M) X 1/8" NPT(F) Straight
51943	1/4"-28 Taper (M) X 1/8" NPT(F) 90 Degree
310912	1/4"-28 Taper (M) X 1/8" NPT(F) 45 Degree
120NP-AM6	M6X1 (M) TO 1/8" NPT (F) Straight
120NP-AM6-90	M6 X 1 (M) TO 1/8" NPT (F) 90 Degree
LNL193-90	M10 X 1 (M) TO 1/8" NPT (F) 90 Degree
LNL194	M8 (M) TO 1/8 (F) Brass Straight
LNL194-90	M8 (M) TO 1/8 (F) Brass 90 Degree
LNL195	M10 X 1 (M) TO 1/8" NPT (F) Straight
LNL272	7/16"-20 (M) TO 1/8" NPT (F) Straight
LNL273	7/16"-28 (M) TO 1/8" NPT (F) Straight

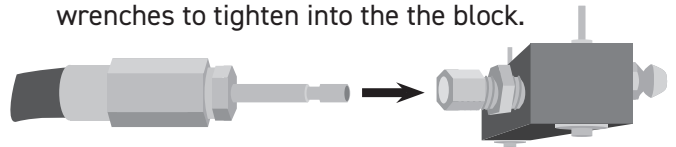
7. Replace that Zerk fitting with a 1/8 NPT compression tube fitting (C).



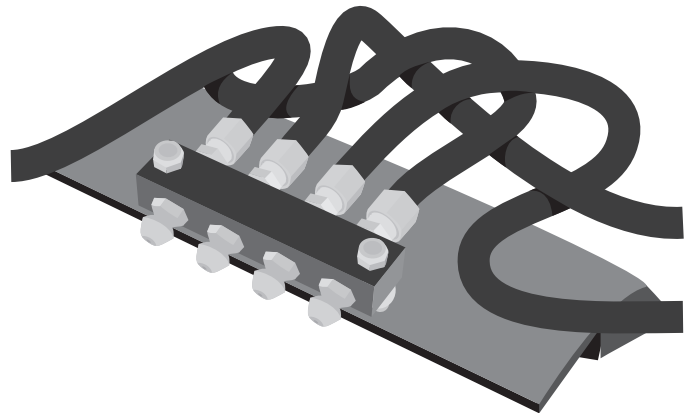
8. Insert the hose barb (B) into the tube socket (C), and tighten the socket sleeve onto the barb. Use your 10mm and 12mm wrenches to tighten.



9. Insert the other hose barb (B) into the manifold tube socket (E). Use your 10mm and 12mm wrenches to tighten into the the block.



10. Repeat steps 1-9 for each fitting you wish to relocate to a simple, single lubrication point.



For more info, scan this QR code to watch our Relocation Manifold Kit overview and assembly demo, or go to our YouTube page at www.youtube.com/locknlube and search for Grease Fitting Relocation Manifold Kits.

