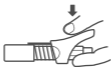
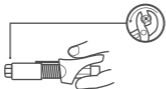


1.



Depress the trigger to reveal the 4 jaws.

2.



Use pliers to grip the tip and turn anti-clockwise to loosen tip. You can also grip the jaws in a vice.

3.



Remove the tip and 4 steel jaws from the coupler.

4.



Assemble the 4 new jaws around the new tip.

5.



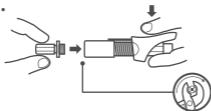
The short end of each of the 4 new jaws should fit into the retaining groove just above the thread on the new tip.

6.



Ensure the 4 new jaws are spaced evenly around the new tip.

7.



Holding the 4 new jaws tightly around the new tip with your fingers, insert the new tip into the end of the coupler body and tighten with pliers.

**WARNING: To prevent damage, do not over-tighten the tip.
Max tightening torque 6 [ft*lb].**