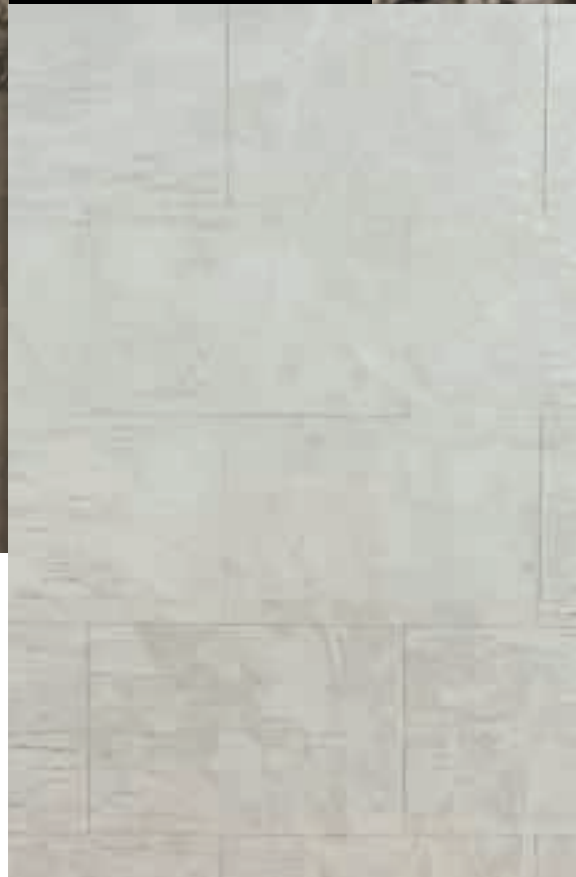




LINEA TUTTORESTAURO



# Marmo antico

Rivestimento decorativo minerale lamato  
per esterno ed interno ad effetto travertino

Interior-exterior decorative mineral coating  
with travertine marble effect

made  
in italy

*Emozioni decorative*

Decorative emotions

**san  
marco**  
SISTEMI VERNICIANTI PER L'EDILIZIA









T100



T101



T102



T114



T106



T107



T108



T126



T112



T113



T132



T120



T118



T119



T125



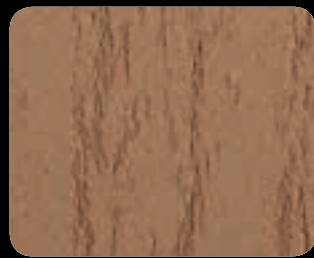
T115



T124



T130



T131



T121

# Marmo antico



T103



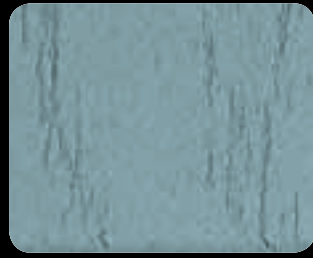
T104



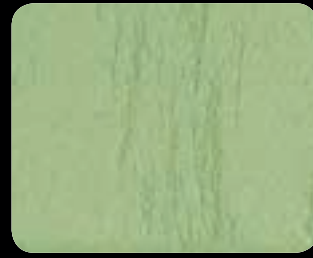
T105



T109



T110



T111



T128



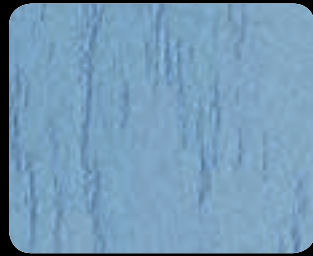
T116



T117



T127



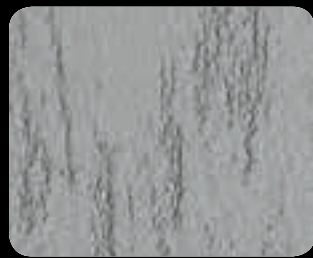
T122



T123



T133



T135



T129



# Marmo antico

## Rivestimento decorativo minerale lamato per esterno ed interno ad effetto travertino

Forme e frammenti di memorie della tradizione. Rigore minimalista del Travertino che dà risalto alla volumetria delle architetture, specialmente di nicchie e colonne. Rivestimento naturale alla calce che fa rivivere la tradizione di esterni nobili di interesse storico e di interni studiati nei minimi dettagli per essere unici.

Marmo antico viene applicato in almeno due strati con resa indicativa di 2,5-3 kg/m<sup>2</sup>.

Attrezzi necessari: frattazzo inox.

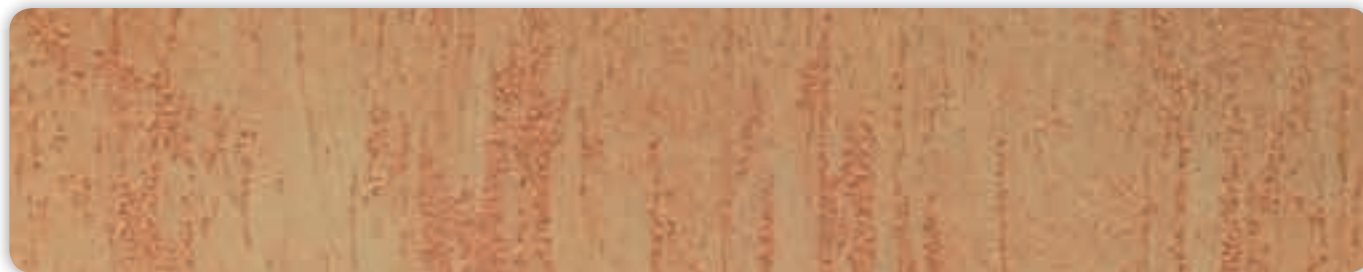
## Interior-exterior decorative mineral coating with travertine marble effect

Shapes and fragments of memories from the past. The minimalist simplicity of Travertine marble intensifies the feeling of volume in buildings, especially when applied in niches and on columns. A natural lime coating which revives the tradition of refined exteriors of historic interest and of interiors where the smallest of details has been studied to make the environment unique.

Marmo antico is normally applied in at least two coats, with an indicative spreading rate of 2.5-3 kg/m<sup>2</sup>.

Tools: steel trowel.

## Effetti - Effects



**Effetto marmo antichizzato** - Decorazione ottenuta dalla combinazione di Marmo antico e Velature. Su fondo preparato con due strati di Marmo antico, asciutto e lucidato, applicare uno strato di Velature.

**Antique marble effect** - Decoration obtained from the combination of the Marmo antico and Velature products. Apply one coat of Velature to a dry and polished base of two coats of Marmo antico.



Colorificio San Marco SpA  
Via Alta 10 - 30020 Marcon (VE) - Italy  
Tel +39 041 4569322 - Fax +39 041 5950153  
e-mail: [info@san-marco.it](mailto:info@san-marco.it)  
[export@san-marco.it](mailto:export@san-marco.it)  
[www.san-marco.it](http://www.san-marco.it)  
[www.emozionidecorative.it](http://www.emozionidecorative.it)

COMPANY WITH  
QUALITY SYSTEM  
CERTIFIED BY DNV  
= ISO 9001 =