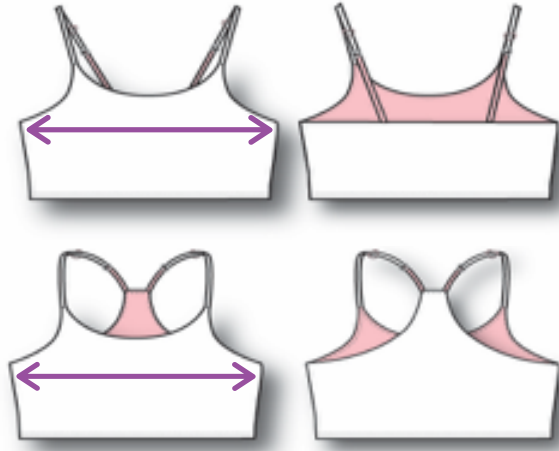




## Bleum Bras

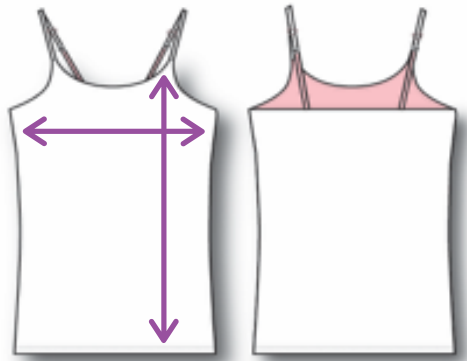


Place a tape measure around the largest part of her chest to obtain her bust measurement. We follow standard sizing for tops, so if your girl wears a size 10, she'll wear a Bleuet size 10 .

Note the Bleum Racerback Bra has a thicker underlying fabric for extra support & coverage, which will fit more snug to the body.

<b>Size</b>	7/8	10	12	14	16	18	20
<b>Chest</b>	23 - 24	25 - 26	27 - 28	29 - 30	31 - 32	33 - 34	35 - 36

## Bleum Cami



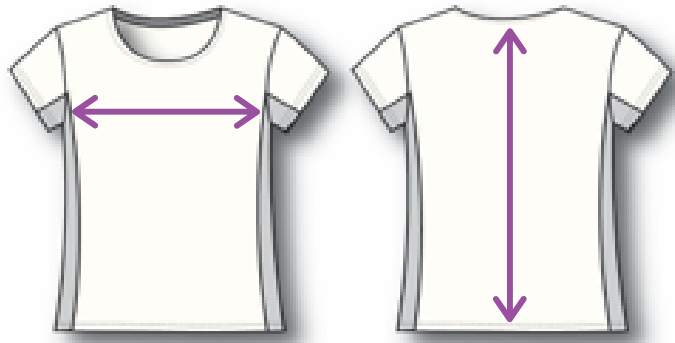
Place a tape measure around the largest part of her chest to obtain her bust measurement. We follow standard sizing for tops, so if your girl wears a size 10, she'll wear a Bleuet size 10 .

<b>Size</b>	7/8	10	12	14	16	18	20
<b>Chest</b>	23 - 24	25 - 26	27 - 28	29 - 30	31 - 32	33 - 34	35 - 36
<b>Body Length</b>	14 - 15	15 - 16	16 - 17	18 - 19	20 - 21	22 - 23	24 - 25





## Bleum Shirts



Our undershirts should fit snug against the body. We follow standard sizing for tops, so if your girl wears a size 10, she'll wear a Bleuet size 10.

Size	7/8	10	12	14	16	18	20
Chest	23 - 24	25 - 26	27 - 28	29 - 30	31 - 32	33 - 34	35 - 36
Body Length	18 - 19	19 - 20	20 - 21	22	24	26	28

