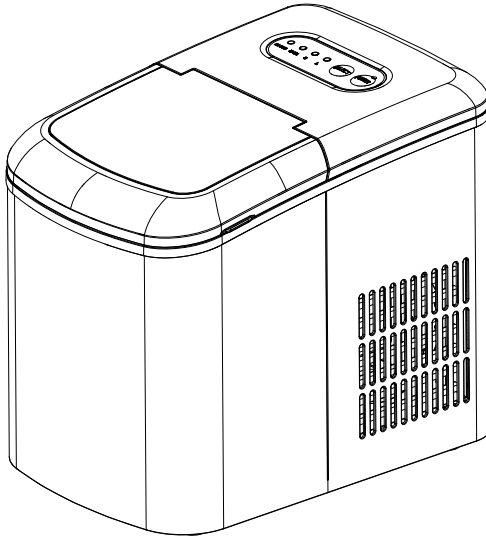


# morphy richards®

smart ideas for your home

## Ice Maker



Model: MRIM15SS

## INSTRUCTION MANUAL

Read these instructions carefully before using this appliance for the first time.

STORE THESE INSTRUCTIONS CAREFULLY

For product hints and tips plus more join us at

[www.morphyrichards.com.au](http://www.morphyrichards.com.au)



facebook.com/MorphyRichardsAUS



instagram.com/morphyrichardsau

## IMPORTANT SAFETY INSTRUCTIONS

### WARNING

To reduce the risk of fire, electric shock, injury to persons or damage to property, follow basic precautions including the following:

- **WARNING:** Misuse of appliance could cause personal injury.
- Read all instructions before using.
- Remove all packing material and carefully check your ice maker to ensure it is in good condition and that there is no damage to the ice maker or power cord and plug.
- If the power cord is damaged, it must be replaced by the manufacturer or its service agent or a similarly qualified person in order to avoid a hazard.
- This appliance is not intended for use by persons (including children) with reduced physical, sensory or mental capabilities, or lack of experience and knowledge, unless they have been given supervision or instruction concerning use of the appliance by a person responsible for their safety. Children should be supervised to ensure that they do not play with the appliance.
- This appliance can be used by children aged from 8 years and above and persons with reduced physical, sensory or mental capabilities or lack of experience and knowledge if they have been given supervision or instruction concerning use of the appliance in a safe way and understand the hazards involved. Children shall not play with the appliance. Cleaning and user maintenance shall not be made by children without supervision.
- This appliance is intended to be used in household and similar applications such as

–staff kitchen areas in shops, offices and other working environments;

–farm houses and by clients in hotels, motels and other residential type environments;

–bed and breakfast type environments;

- **WARNING:** Do not store explosive substances such as aerosol cans with a flammable propellant in this appliance.
- **WARNING:** Keep ventilation openings, in the appliance enclosure or in the built-in structure, clear of obstruction.
- **WARNING:** Do not use mechanical devices or other means to accelerate the defrosting process, other than those recommended by the manufacturer.
- **WARNING:** Do not damage the refrigerant circuit.
- **WARNING:** Do not use electrical appliances inside the food storage compartments of the appliance, unless they are of the type recommended by the manufacturer.
- **WARNING:** When positioning the appliance, ensure the supply cord is not trapped or damaged.
- **WARNING:** Do not locate multiple portable socket-outlets or portable power supplies at the rear of the appliance.
- **WARNING:** When disposing of the appliance, do so only at an authorized waste disposal centre. Do not expose to flame.

If the refrigerant circuit should be damaged:

- Avoid opening flames and sources of ignition.



**WARNING: The refrigerant isobutene (R600a) is contained within the refrigerant circuit of the appliance, a natural gas with a high level of environmental compatibility, which is nevertheless flammable. During transportation and installation of the appliance, ensure that none of the components of the refrigerant circuit becomes damaged.**

- Thoroughly ventilate the room in which the appliance is situated.

## Location

- Before using the Ice Maker for the first time, please wait 2 hours after positioning it, and keep the transparent lid open for at least 2 hours.
- For indoor use only. Do not use outdoors or near water.
- Always locate your appliance away from the edge of the worktop.
- Do not upend this product or incline it over a 45° angle. Ensure that the appliance is used on a firm, flat surface.
- Keep the appliance 8cm from other objects to ensure the heat generated is heat released.
- Do not use the appliance close to flames, hot plates or stoves.
- It is hazardous for anyone other than an Authorised Service Person to service this appliance. In Queensland - the authorised Service Person **MUST** hold a Gas Work Authorisation for hydrocarbon refrigerants to carry out servicing or repairs where the gas system is being opened or charged.

## Power cord

- **WARNING:** This appliance should **NOT** be used with extension leads and/or power boards.
- The power cord should reach from the socket to the appliance without straining the connections.
- If the power cord is damaged, it must be replaced by the manufacturer, its service agent or similarly qualified persons in order to avoid a hazard.
- Remove the plug from the socket, grasp the plug and pull out the power cord, do not pull on the cord directly.

- Do not let the cord hang over the edge of a table or counter and keep it away from any hot surfaces.
- Do not let the cord run across an open space e.g. between a low socket and table.

## Personal safety

- **WARNING:** To protect against fire, electric shock and personal injury do not immerse cord, plug and appliance in water or any other liquid.
- **WARNING:** Fill with potable water only.
- **WARNING:** The appliance surface is subject to residual heat after use.
- The temperature of accessible surfaces may be high when the appliance is operating.
- Unplug from the outlet before cleaning and allow to cool before putting on or taking off parts and before cleaning.
- Do not move the appliance while switched on.
- Do not use accessories which are not recommended by the manufacturer.
- Do not switch on the power button frequently (ensure 5 minutes interval at least) to avoid damage to the compressor.

## Electrical requirements

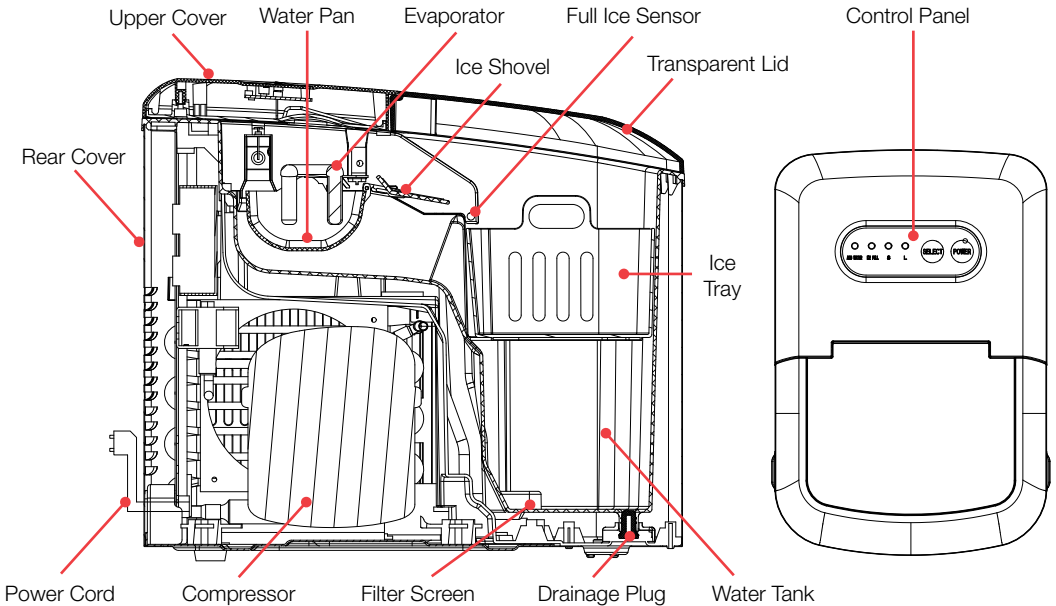
- **WARNING:** This appliance should NOT be used with extension leads and/or power boards.
- Check that the voltage on the rating label of your appliance corresponds with your house electricity supply which must be A.C.

**READ CAREFULLY AND KEEP FOR FUTURE REFERENCE**

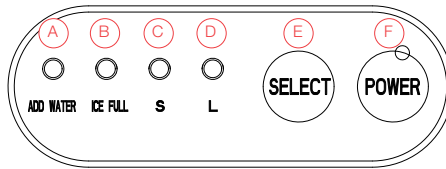
## SPECIFICATIONS

<b>Model:</b>	<b>MRIM15SS</b>
<b>Colour:</b>	<b>Stainless Steel / Black</b>
<b>Rated Power:</b>	<b>120W</b>
<b>Rated Voltage &amp; Frequency:</b>	<b>220-240V~ 50Hz</b>
<b>Water Tank Capacity:</b>	<b>2.1L</b>
<b>Ice Bin Capacity:</b>	<b>0.6 kg</b>
<b>Refrigerant/Refrigerant Amount:</b>	<b>R600a/23g</b>
<b>Foaming Agent:</b>	<b>C<sub>5</sub>H<sub>10</sub></b>
<b>Dimensions (W x D x H):</b>	<b>248 x 372 x 315mm</b>
<b>Net Weight:</b>	<b>9.5kg</b>

## PRODUCT OVERVIEW



## CONTROL PANEL



**A - Add Water Indicator** - When the ADD WATER indicator is red, there is a water shortage in the water tank. You need to add water and press the POWER button to restart the machine.

**B - Ice Full Indicator** - When the ice reaches the maximum amount of ice in the ice bin, the ICE FULL indicator flashes and the machine stops. At this time, the ice needs to be emptied. When the ice in the bin is lower than the full sensor position, the machine will restart automatically.

**C - Small Ice Selection Indicator** - When selecting small ice, the S indicator will illuminate.

**D - Large Ice Selection Indicator** - When large ice is selected, the L indicator will illuminate. Large ice is the default setting.

**E - Select Button (Ice Size Selection and Cleaning Function)**  
**Ice Size selection**

You can switch between large and small ice sizes by pressing the SELECT (E) button.

**Cleaning Function**

Press and hold the SELECT button for 3 seconds, and the machine will enter the cleaning mode. Please do not turn off the power during this period. After cleaning, the machine will automatically enter the standby mode.

**F - Power Button and Indicator** - After the plug is plugged in, the machine enters the standby state, where the power indicator light flashes. Press the POWER button and the machine will begin the ice making process and the power indicator light will remain on.

## BEFORE FIRST USE

1. Remove all packaging materials and read all instructions.
2. Check that all accessories are complete and the appliance is not damaged.
3. Clean all parts to remove any dust or manufacturing residue.
4. Clean the water storage tank and ice collecting tray with clean water.
5. Run the Cleaning Function, as described on page 7.

## USING YOUR ICE MAKER

1. Open the lid and take out the ice collecting tray and add water to the tank.

**NOTE:** There is a maximum scale (MAX) in the water tank.

The water should not exceed the MAX position. If the water exceeds the MAX position, you need to open the bottom drainage plug and release the excess water. Plug the drainage plug back in.

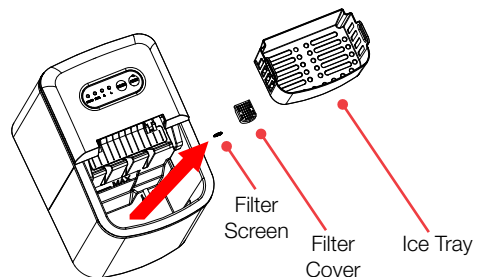
2. Replace the ice collecting tray and close the transparent lid.
3. Plug the Ice Maker plug into the mains power. The POWER button indicator will begin to flash. Press the POWER button to start the machine.
4. Press the SELECT button to select the ice making mode. When the indoor temperature is lower than 15°C, it is recommended to select small ice. When the indoor temperature is higher than 30°C, it is recommended to choose large ice.

**NOTE:** When the the large ice mode (L) is selected, ice will be produced every 9 minutes. When the small ice mode (S) is selected, ice is produced every 8 minutes.



## CARE & CLEANING

- Clean the water tank if the appliance has water in the tank and has not been used for 48 hours.
- If the appliance is left empty for long periods, switch off, defrost, clean, dry, and leave the lid open to prevent mould developing within the appliance.
- Clean the inner liner, ice collecting tray, water tank, ice shovel and evaporator frequently. When cleaning, unplug the unit and remove the ice cubes. Use a diluted solution of water and vinegar to clean the inside and outside surface. Do not spray with chemicals or diluted agents such as acids or oil. Rinse thoroughly before operation.
- Do not use mechanical devices or other means to accelerate the defrosting process, other than those recommended by the manufacturer.
- To ensure good quality ice, please change the water in the tank once a day. If unused for a long time, drain the water out of the unit and dry the tank.
- If the compressor does not work, due to lack of water, full ice, power failure, etc, it will delay for 3 minutes to start up after restarted.
- The water tank has a filter screen that should be removed and cleaned regularly to prevent scale from blocking the water inlet. Take out the ice collecting tray, filter cover and filter screen, clean the filter cover and filter screen with clean water, and then put them back in place.



## TROUBLESHOOTING

**NOTE:** If a power failure occurs due to disconnection of the power cord, or the POWER button has been pressed during an ice making cycle, small ice chips may form and lodge in the automatic shovel causing it to jam. If this occurs, the ice chips can be removed by disconnecting the power cord and gently pushing the shovel to the rear of the cabinet and removing the ice chips, and restarting.

Check if the water reservoir is flat when the ice shovel can not remove the ice to the ice collecting tray. If not, push the ice shovel gently by finger, then press POWER button to restart.

<b>PROBLEM</b>	<b>POSSIBLE CAUSE</b>	<b>SUGGESTED SOLUTIONS</b>
The compressor works abnormally with a buzzing noise.	The voltage is lower than recommended.	Stop the ice maker and do not restart until the voltage is normal.
Water shortage indicator light is on.	1. There is no water. 2. The pump is full of air.	1. Add some water until it reaches MAX position. 2. Press POWER button to restart.
Indicator lights on display are not on.	1. No power. 2. Blown fuse.	1. Ensure power is on. 2. Replace fuse.
The ice made is too large and pieces are sticking together.	1. Wrong ice size selected. 2. Ice from previous cycles is left in the water tray.	1. Select small size. 2. Take out the ice during the standby state.
The ice making process was correct, but no ice came out?	1. The compressor has no refrigerant. 2. Compressor damaged. 3. Fan motor damaged.	Contact the relevant Customer Care Centre.
All indicator lights flash at the same time.	1. The water box is blocked by ice. 2. The motor is stuck, falls off, or damaged. 3. Micro switch damaged.	1. Take out the ice under the ice shovel, plug in power again, and press the POWER button. 2 & 3. Contact the relevant Customer Care Centre.
The machine has been working, but the water has been warming.	Solenoid broken.	Contact the relevant Customer Care Centre.
When the ice is full, the machine does not display the ice full icon.	Ice full sensor damaged.	Contact the relevant Customer Care Centre.

## TIPS FOR YOUR ICE MAKER

- Opening the lid for long periods can cause a significant increase of the temperature in the compartments of the appliance.
- If the appliance is left empty for long periods, switch off, defrost, clean, dry, and leave the lid open to prevent mould developing within the appliance.
- It is normal for the compressor and condenser surface to reach temperatures between 70°C and 90°C during operation and surrounding areas may be very hot.
- Due to fast freezing, ice cubes may become opaque. This is due to air becoming trapped in the water and will not affect the quality or taste of the ice.
- Do not use with water that is microbiologically unsafe or of unknown quality. Always use fresh water before starting ice production either at initial installation or after a long shut-off.

## MAINTENANCE

If the unit fails to operate efficiently, is broken or other problems arise, unplug and do not operate.

Ask for advice by calling your local after sales service agent or the Customer Care Centre on 1300 556 816 (AU) / 0800 666 2824 (NZ).

## WARRANTY

Please refer to the warranty card in the box for warranty information. For any troubleshooting advice, please contact the relative Customer Care Centre below.

Glen Dimplex Australia Pty Ltd  
8 Lakeview Drive,  
Scoresby 3179, Victoria  
Australia  
Ph: 1300 556 816

Glen Dimplex New Zealand Ltd  
38 Harris Road, East Tamaki,  
Auckland 2013  
New Zealand  
Ph: 0800 666 2824



Recycling: Do not dispose of electrical appliances as unsorted municipal waste. Use separate collection facilities. Contact your local government for information regarding the collection systems available. If electrical appliances are disposed of in landfills or dumps, hazardous substances can leak into the ground water, polluting the food chain and damaging health and wellbeing.

Expanded Polystyrene Disposal: The websites listed below can assist in the responsible disposal of EPS (Expanded Polystyrene) packaging products.

Australia: <https://recyclingnearyou.com.au/polystyrene> and/or <http://epsa.org.au>

New Zealand: <https://greenbusinesshq.com/epsrecycling> and/or

<https://www.plastics.org.nz/environment/recycling-disposal/eps-recycling>

## **morphy richards®**

Glen Dimplex Australia Pty Ltd  
8 Lakeview Drive  
Scoresby VIC 3179  
Phone: 1300 556 816  
Email: [seasonal.support@glendimplex.com.au](mailto:seasonal.support@glendimplex.com.au)  
Web: [www.morphyrichards.com.au](http://www.morphyrichards.com.au)

## **morphy richards®**

Glen Dimplex New Zealand Ltd  
1 Ron Driver Place  
East Tamaki, Auckland  
Phone: 09 274 8265  
Email: [sales@glendimplex.co.nz](mailto:sales@glendimplex.co.nz)  
Web: [www.morphyrichards.co.nz](http://www.morphyrichards.co.nz)

© Glen Dimplex Australia. All rights reserved. Material contained in this publication may not be reproduced in whole or in part, without prior permission in writing of Glen Dimplex Australia.