

# BTECH-ALLOY V

## Weld-on Lifting Lugs FOR LIFTING AND LASHING

As a high strength attachment point for both lifting and lashing B-Tech-Alloy V Weld-on Lugs offer a permanent solution. Applications for this leading edge product are in all sectors of mining, rail and road transportation, construction, marine and offshore exploration.

### CAPACITIES AVAILABLE

WLL in tonnes

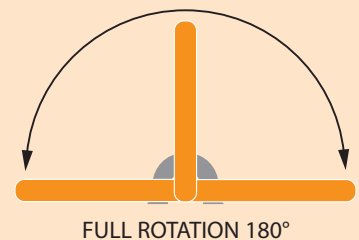
1.5, 2.5, 4, 6.7, 10 & 16.



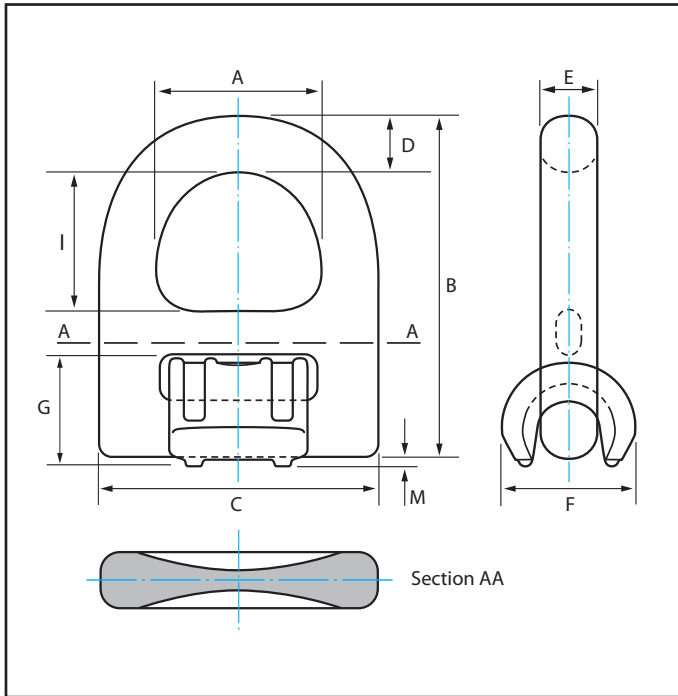
Model: BTAV

### FEATURES

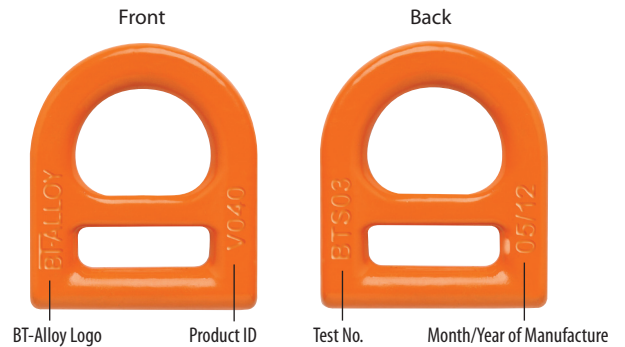
- The Working Load Limit remains constant at any angle of lift.
- Welding the lug assembly into the desired position is easily achieved with weld height lugs under the weld block.
- The lug and weld block are made using Grade 100 Alloy Steel, then quenched and tempered.
- All B-Tech Alloy V Weld-on Lugs are magnetically crack inspected (MPI) after manufacture.
- Lifting lug is finished in powder coated baked enamel for greater corrosion resistance.
- The lifting lug and weld block are marked with BT-ALLOY V, WLL (Working Load Limit) and the month and year of manufacture along with an individual test number for easy tracing and identification.
- Designed to lay flat when not in use.
- Detailed welding instructions are supplied with each set.
- Test Certificate available.



## TECHNICAL SPECIFICATIONS



### LIFTING LUG MARKINGS

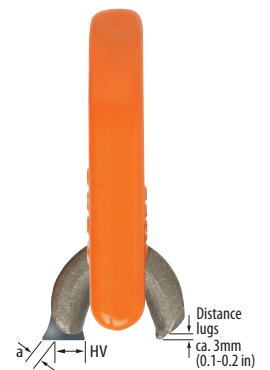


### WELD BLOCK MARKINGS



Part Code	WLL tonnes	A mm	B mm	C mm	D mm	E mm	F mm	G mm	I mm	M mm	Weld mm HV+aL	Weight Kg
BTAV015	1.5	38	79	66	14	13.5	32	25	31	2	HV5+3	0.40
BTAV025	2.5	45	92.5	77	16	13.5	36	27	37	3.5	HV7+3	0.60
BTAV040	4	51	102	87	18	16.5	42	32	40.5	2	HV8+3	0.90
BTAV067	6.7	67	138	115	24	22.5	61	44	55	4	HV12+4	2.0
BTAV100	10	67.5	142	129	26.5	57.5	75	53	57.5	4	HV16+4	3.0
BTAV160	16	100	215	190	40	26	95	69	85	5	HV25+6	6.9

### WELDING SEAM ATTACHMENT



BEAVER TECHNOLOGY SERVICES

PTY LIMITED

www.btstech.com.au

