

NOTES

1. Dimensions: those stated should refer to the finished dimensions of the blind itself excluding loops; due to the handmade nature of the blinds there should be an expectation of +/- 0.5" / 1.25cm variation; guide width maximum is 80" / 203cm and maximum drop is 165" / 420cm, with the greater the width the increased potential for the blind to become misshapen.

2. Inside/outside mount: for inside mount we suggest a total of 1" / 2.5cm deductions to both width and height to help the smooth operation of the blind, however other deductions may be more relevant for your specific circumstance and should be advised by your blind fitter; should we need to make any adjustment to your stated dimensions for an inside mount this must be stated in column 8, and if different from our suggested dimensions this should be stated in box 15; for inside mounts we ensure that any variation in dimension does not exceed the stated dimensions.

3. Pulley options: there is the option of a single or double pulley system (refer to diagrams on next page); for a double pulley system we need to understand whether the adjustment cord is on the left or right side (for single it is always central); for smaller widths a single pulley can work well, however if the drop is long we suggest a double pulley to provide stability.

4. Binding/lining options: standard binding widths are 1" / 2.5cm or 1.5" / 4cm; our standard binding is a mid weight linen in cream (L-100), beige (L-200) or white (L-300); alternatively we can use a choice of most fabrics from our collection; there is an option to line the blinds in any fabric from our collection.

ADDITIONAL INFORMATION

1. Handmade product: due to the handmade nature of our chick blinds, there should be some reasonable expectation of variation in dimension, weight, tension and colour within and between batches; returns will only be considered where variation is material in nature. We do not guarantee against wear, fading or discoloration, shrinkage, abrasion, or batch variation.

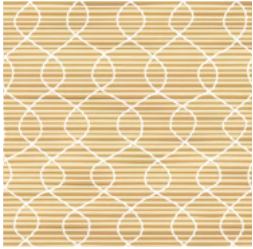
2. Customisation options:

a. Woven threads: our standard thread is natural cream colour; we can however customise this colour to match to your requirement, and can also customise the binding colour to match.

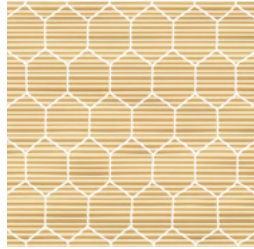
b. Fitting: 1" loops are attached to the top of the blind as standard; we can however customise the fitting as appropriate.

c. Customer's Own Material (COM): we prefer not to apply COM due to the cost and timing uncertainty of getting the fabric to us in India.

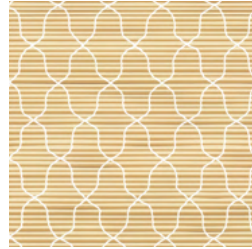
DESIGN OPTIONS



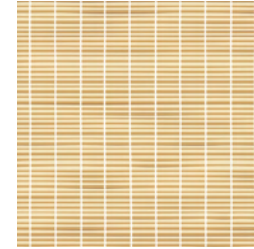
D1-01 Safety Pin



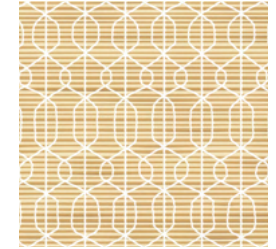
D1-02 Chicken Coop



D1-03 Casablanca

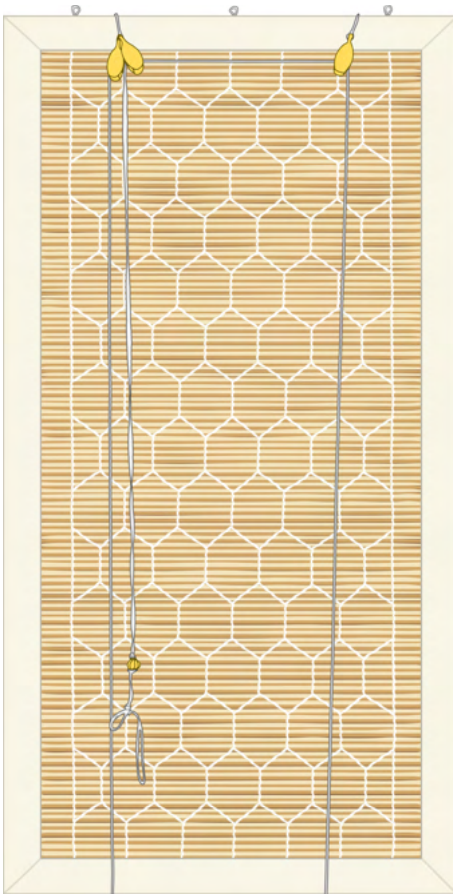


D1-04 Spellbound

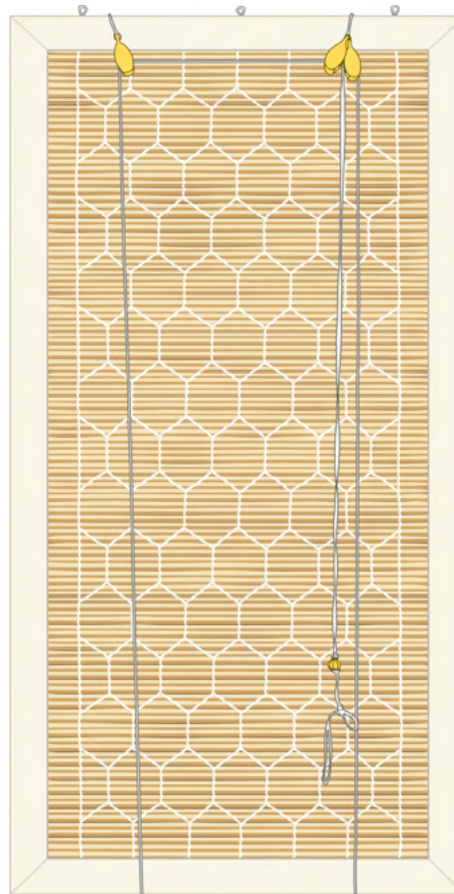


D1-05 Tangier

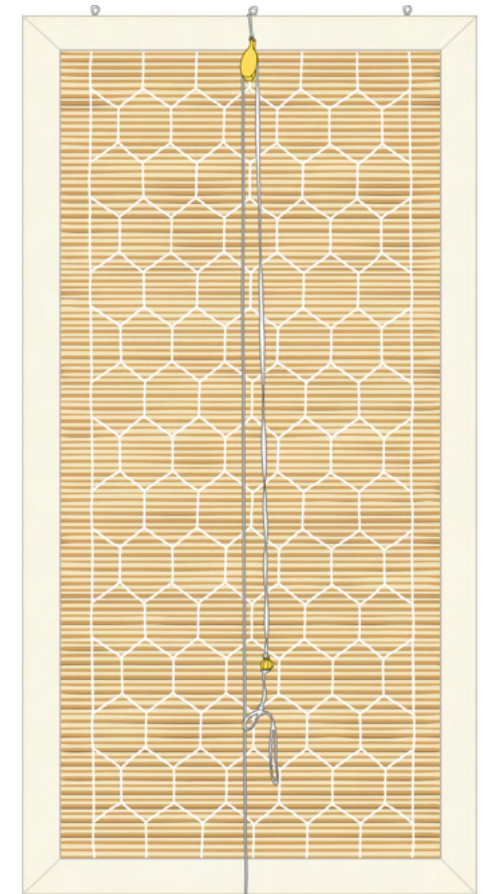
PULLEY OPTIONS



Double Pulley, adjustment cord - Left

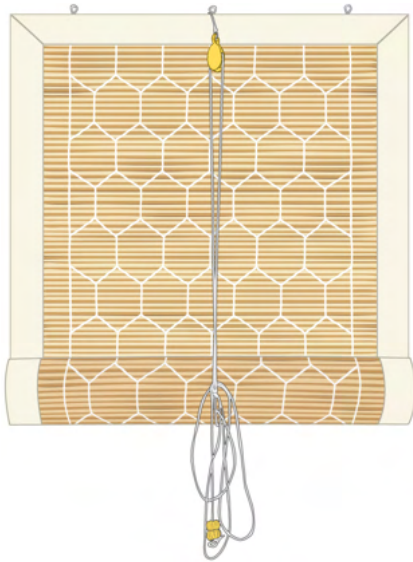


Double Pulley, adjustment cord - Right

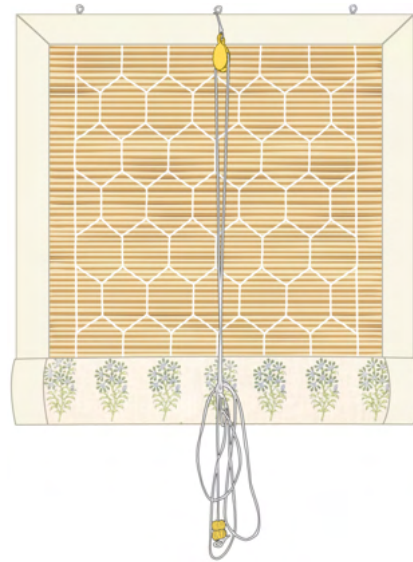


Single Pulley

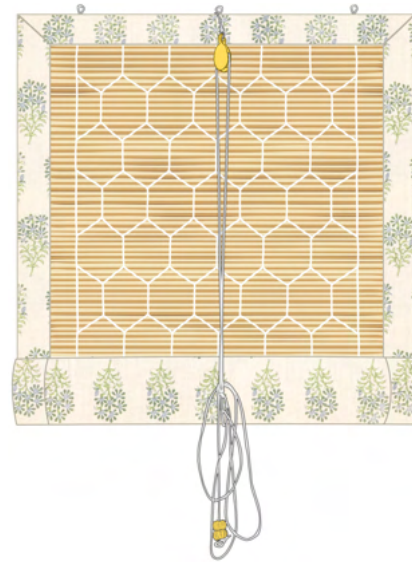
LINING / BINDING OPTIONS



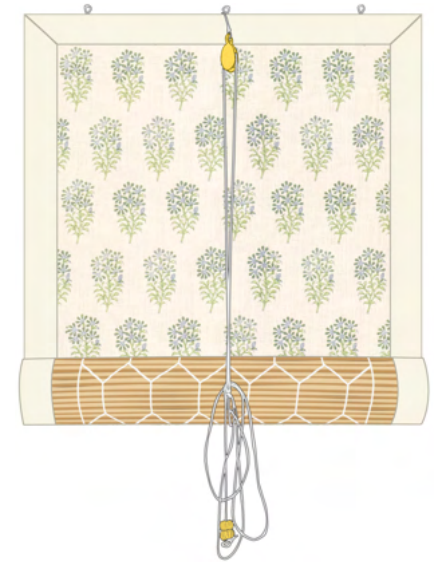
L0-01
No Lining, Standard Binding



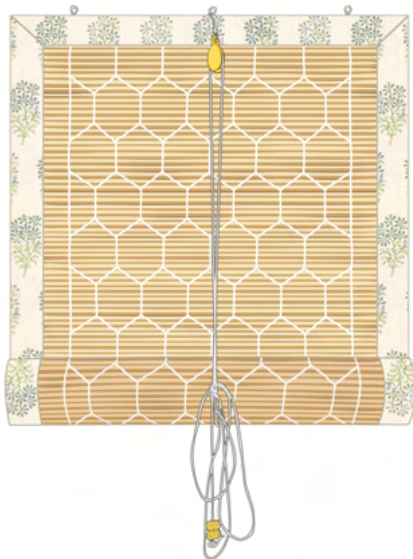
L1-01
[A & B: Shown from Front & Back]
Fabric Lined, Standard Binding, Bam-
boo facing inside
NB: Print is inverted on the back



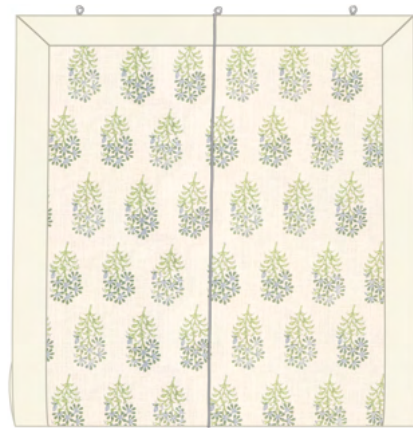
L1-02
[A & B: Shown from Front & Back]
Fabric Lined, Printed Binding, Bam-
boo facing inside
NB: Print is inverted on the rolled area
on the front



L1-03
Fabric Lined, Standard Binding,
Bamboo facing outside



L0-02
No Lining, Printed Binding



L1-04
Fabric Lined, Printed Binding, Bam-
boo facing outside