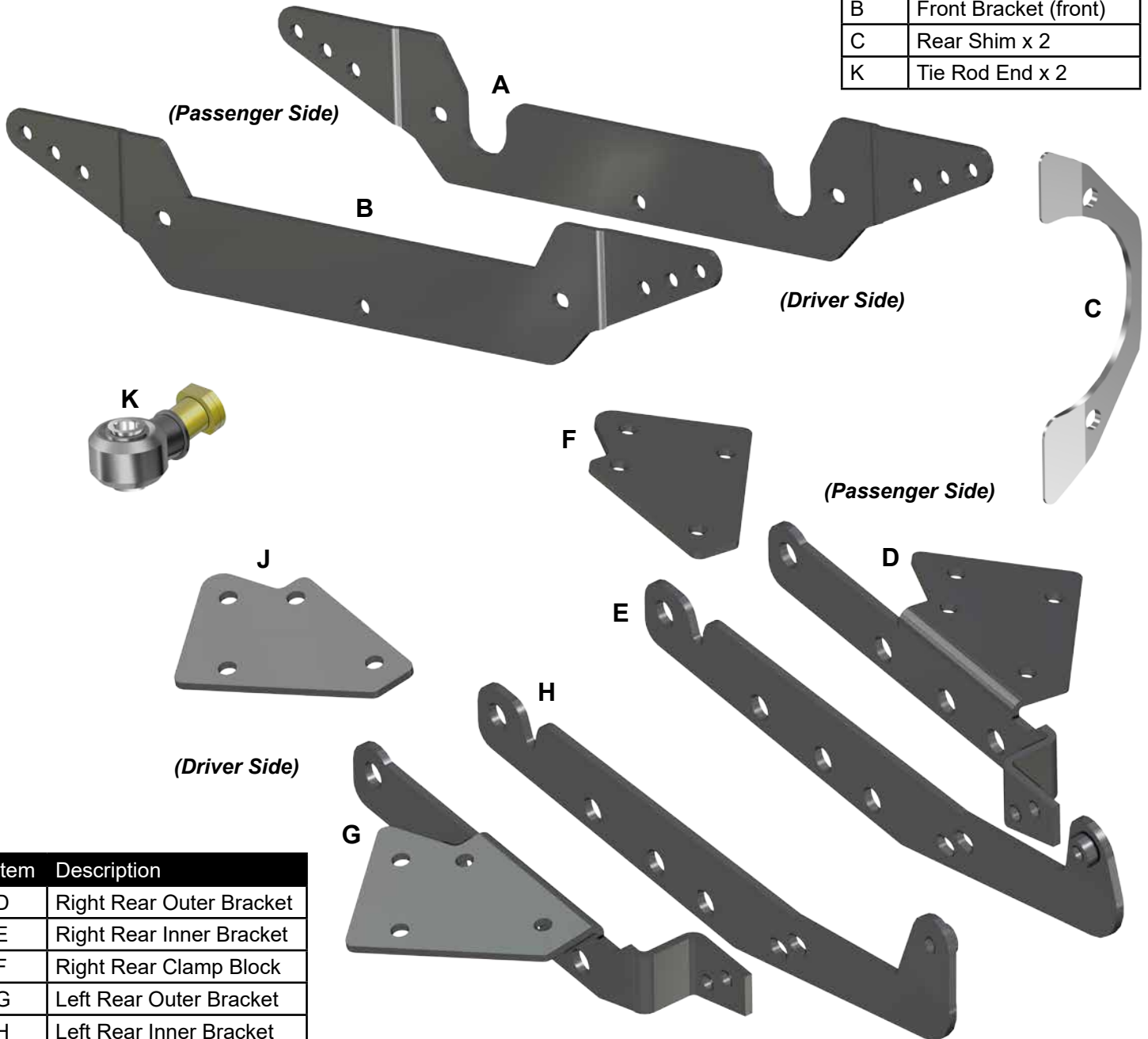


**INSTALLATION INSTRUCTIONS**  
**3" - 5" Lift Kit**  
 for Polaris RZR<sup>®</sup> XP

Item	Description
A	Front Bracket (rear)
B	Front Bracket (front)
C	Rear Shim x 2
K	Tie Rod End x 2



Item	Description
D	Right Rear Outer Bracket
E	Right Rear Inner Bracket
F	Right Rear Clamp Block
G	Left Rear Outer Bracket
H	Left Rear Inner Bracket
J	Left Rear Clamp Block

**Need help with your installation?**

 sales@superatv.com
  www.superatv.com

 1-855-743-3427
  8:00am - 8:00pm EST M-Th  
 8:00am - 7:00pm EST Friday  
 9:00am - 2:00pm EST Saturday

Read instructions and view illustrations before beginning.

Thank You  
 For Choosing  
**SUPERATV**.COM<sup>®</sup>

#### Liability Statement

SuperATV's® products are designed to best fit user's ATV/UTV under stock conditions. Adding, modifying, or fabricating any factory or aftermarket parts will void any warranty provided by SuperATV® and is not recommended. SuperATV's® products could interfere with other aftermarket accessories. If user has aftermarket products on machine, contact SuperATV® to verify that they will work together.

Although SuperATV® has thousands of satisfied customers, user should be aware that installing lift kits, long travel, or suspension kits, tires, etc. will change the ride of machine and may increase maintenance and part wear. Operating any off-road machine while, or after, consuming alcohol and/or drugs increases risk of bodily harm or death. No warranty or representation is made as to this product's ability to protect user from severe injury or death. SuperATV® urges operators and occupants to wear a helmet and appropriate riding gear at all times.

By purchasing and installing SuperATV® products, user agrees that should damages occur, SuperATV® will not be held responsible for loss of time, use, labor fees, replacement parts, or freight charges. SuperATV®, nor any 3rd party, will not be held responsible for any direct, indirect, incidental, special, or consequential damages that result from any product purchased from SuperATV®. The total liability of seller to user for all damages, losses, and causes of action, if any, shall not exceed the total purchase price paid for the product that gave rise to the claim.

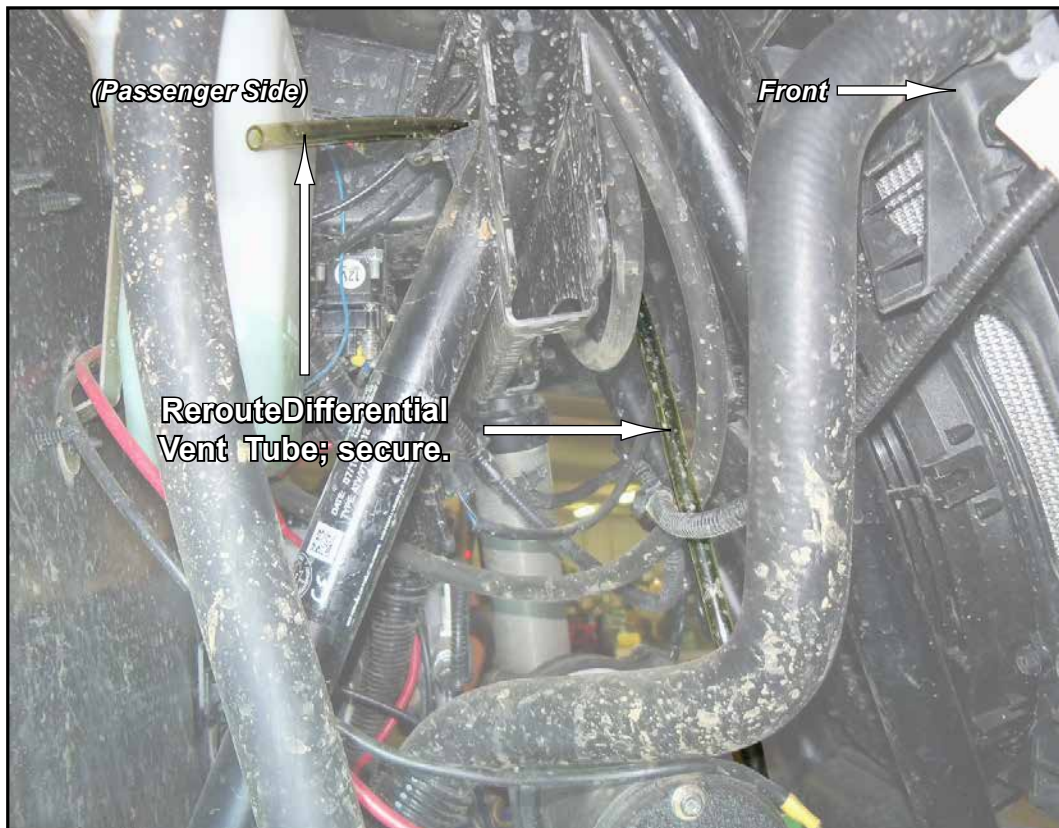
SuperATV® will warranty only parts provided by SuperATV®. Any damage or problems with OEM housings, bearings, seals, or other manufacturers' products will not be covered by SuperATV®. SuperATV® parts and products are not warranted if item was not installed properly, misused, or modified.

Installing, adding, modifying, or fabricating any factory or aftermarket product to your ATV/UTV may violate certain local, state, and federal laws. Be advised that laws vary depending on town, city, county, state, etc. Use of certain products on public streets, roads, or highways may be in violation law. The Buyer is solely and exclusively legally and personally responsible for any violation of the law by the installation or use of the product. You must abide by all local, state, and federal laws, including but not limited to vehicle safety, traffic laws, and ordinances. It is your responsibility to know the laws and how they apply to you.

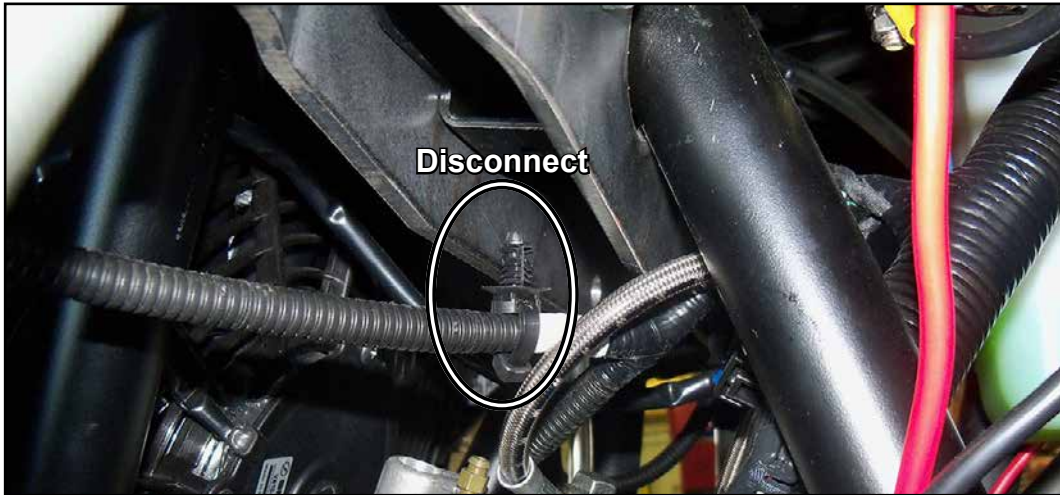
The Buyer is responsible to fully understand the capability and limitations of his/her vehicle according to manufacturer specifications, warnings and instructions and agrees to hold SuperATV® harmless from any damage resulting from failure to adhere to such specifications, warnings and/ or instructions. The Buyer is also responsible to obey all applicable federal, state, and local laws and ordinances when operating his/her vehicle while using this product, and the Buyer agrees to hold SuperATV® harmless from any violation thereof.

## Front

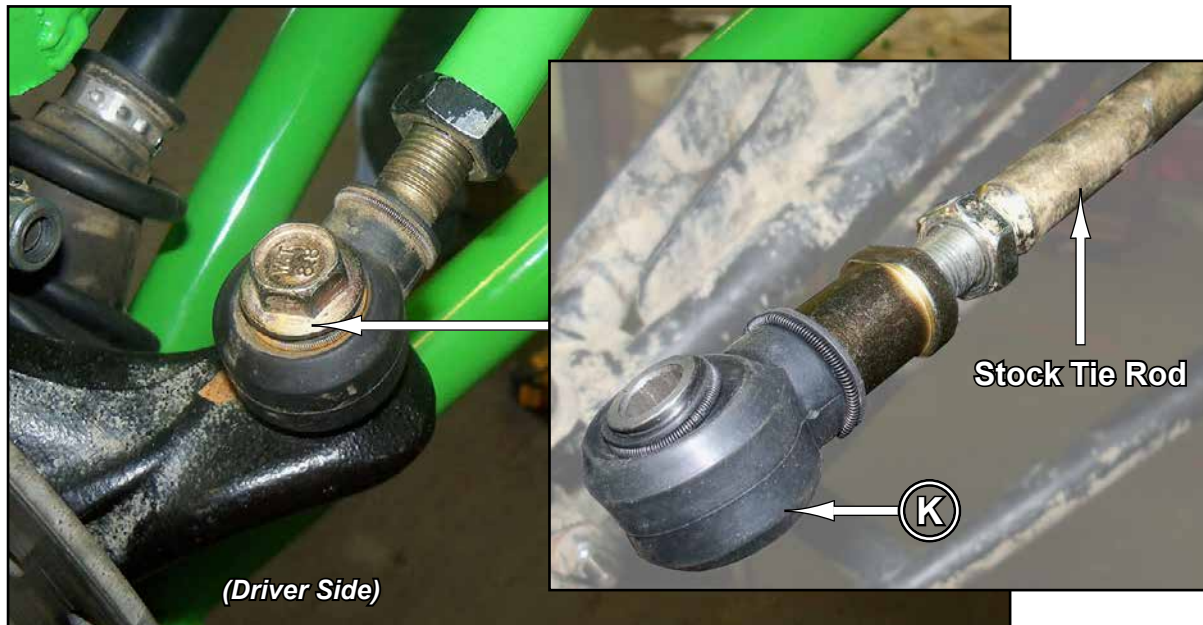
- Raise front of machine off ground, secure with jack stands.
- Remove Wheels.
- Disconnect Tie Rods from Spindles.
- Remove Shocks fom Frame.
- Disconnect Differential Vent Tube. Reinstall to a convenient location *after* Brackets have been installed.



- Disconnect Wire Harness from Frame. Reinstall to a convenient location *after* Brackets have been installed.

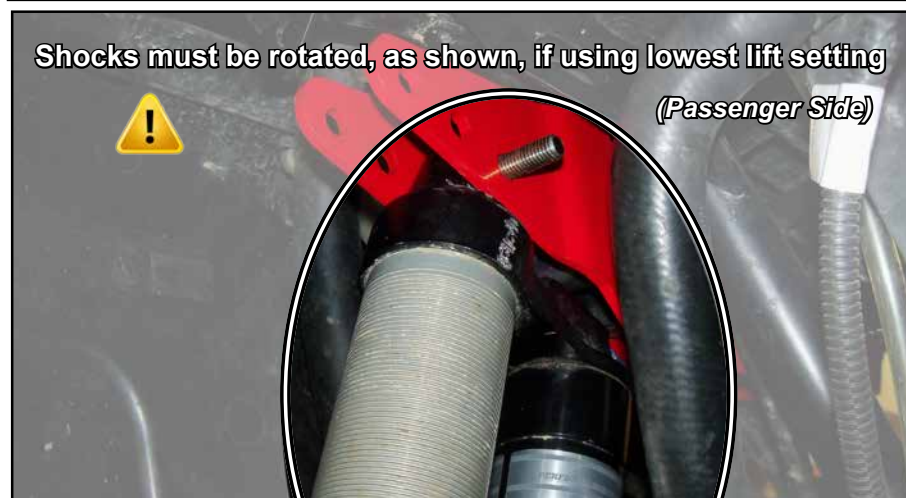
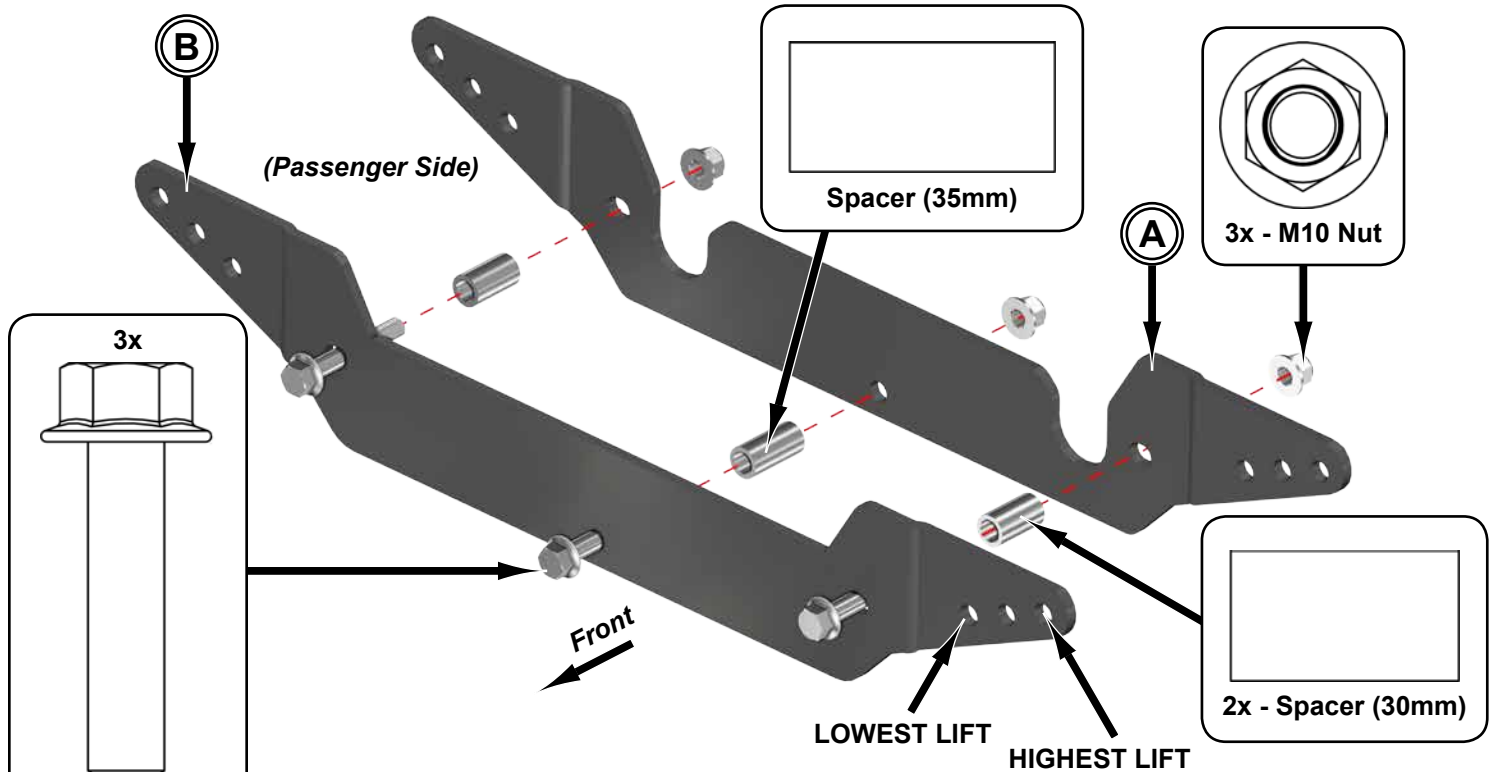


- Remove stock Tie Rod Ends from Tie Rods and install provided Tie Rod Ends (K). Use stock hardware when reinstalling to Spindles.



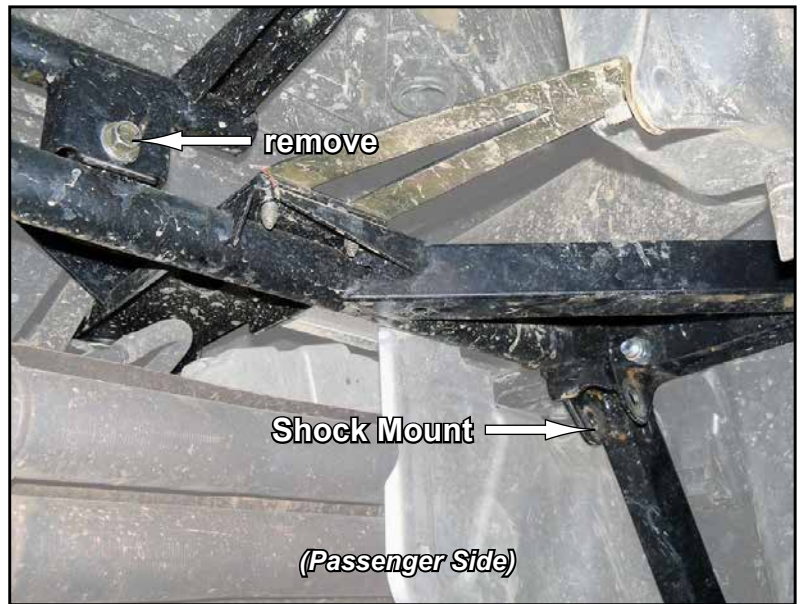
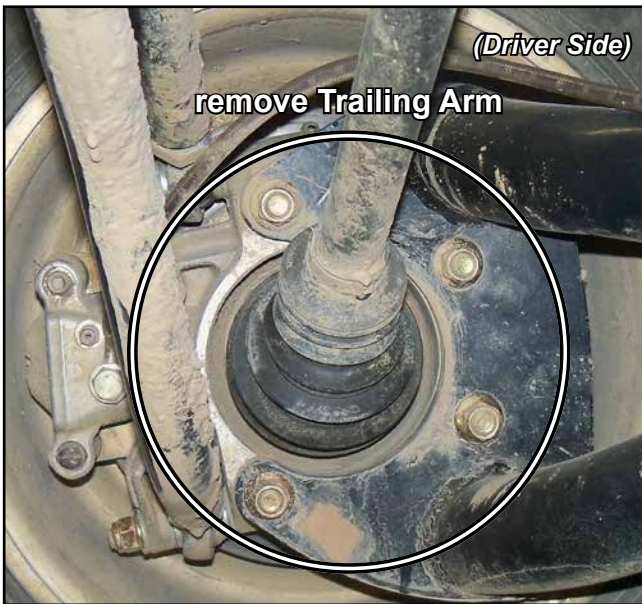
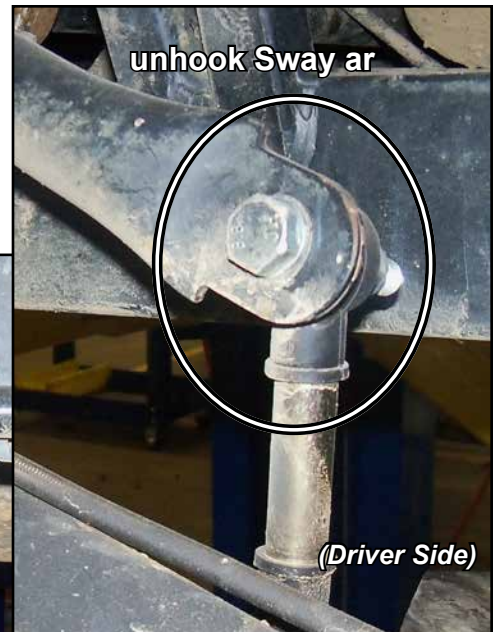
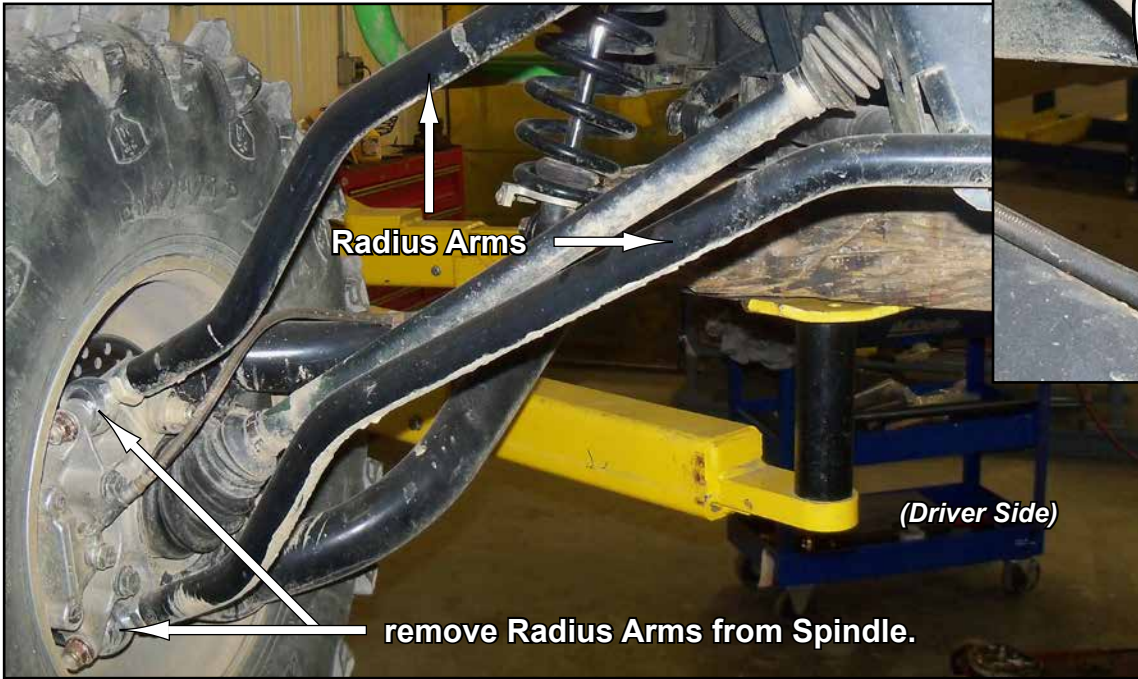
*Do not tighten hardware completely unless noted.*

- Install Front Brackets (A)(B) to *outsides* of Frame. Secure Front Brackets with hardware shown.
- Determine desired lift setting and reinstall Shocks with hardware shown. **If using lowest lift setting, rotate Shocks as shown below.**
- Reinstall necessary components and tighten all hardware completely.



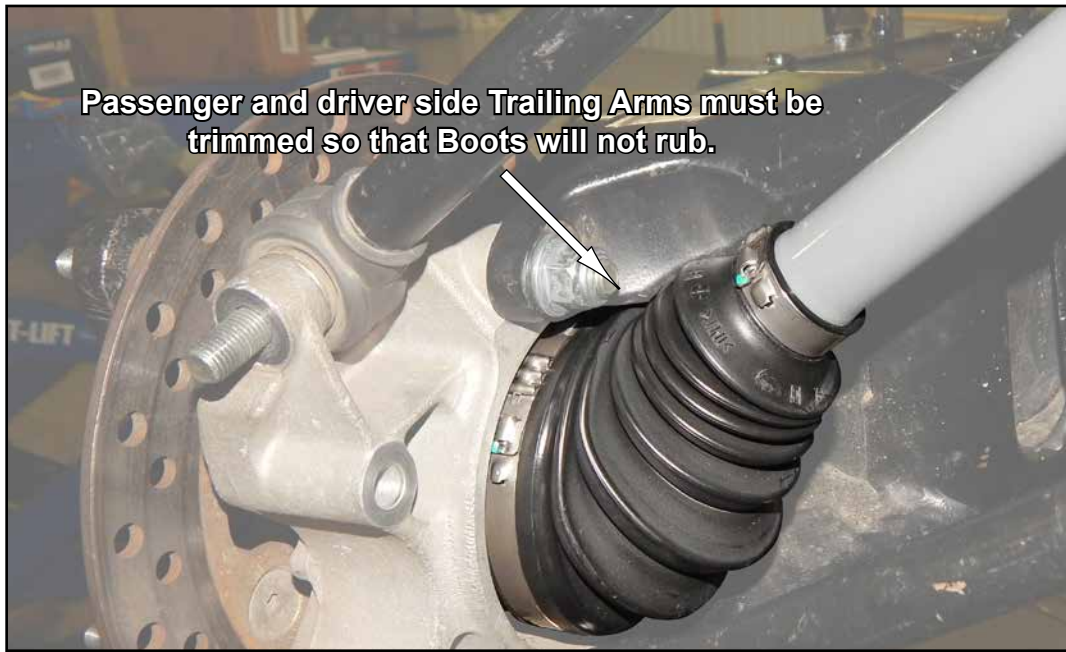
## Rear Removal

- Raise rear of machine off ground, secure with jack stands, remove Wheels, and Shocks (upper) from Shock Mount.
- Unbolt Sway Bar.
- Remove Radius Arms from Spindles.
- Remove Trailing Arms from Spindles.



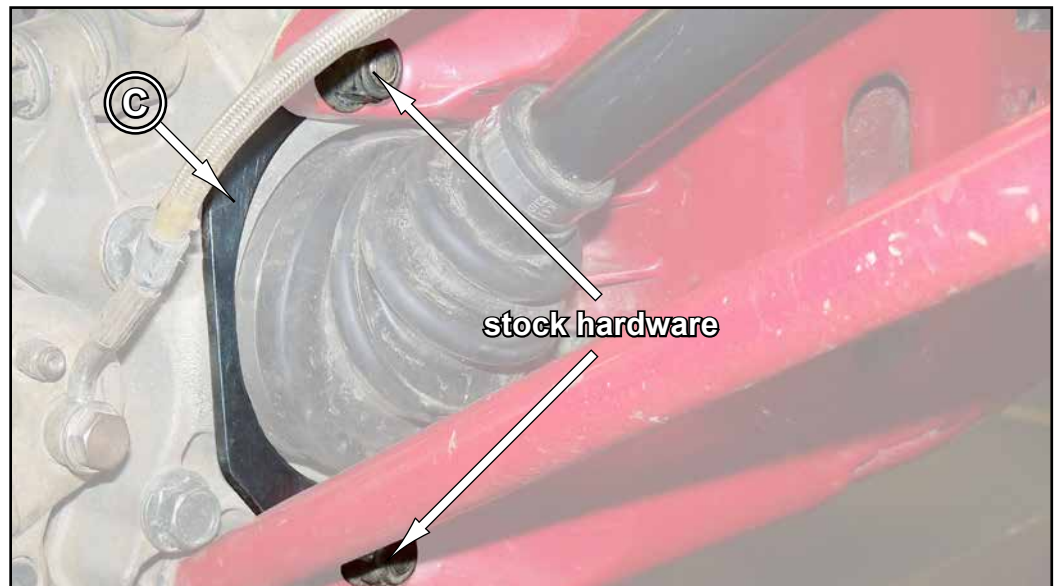
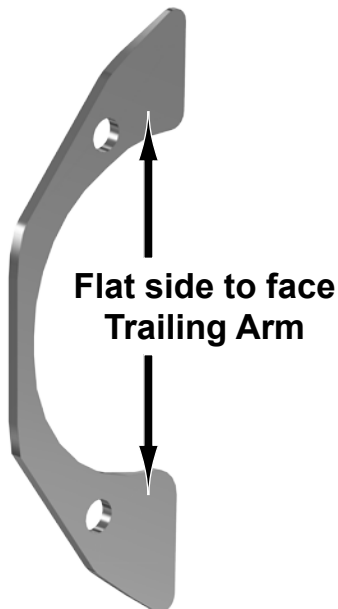
## Axle and Rear Shim Installation; (Driver Side)

- Install new Axle.



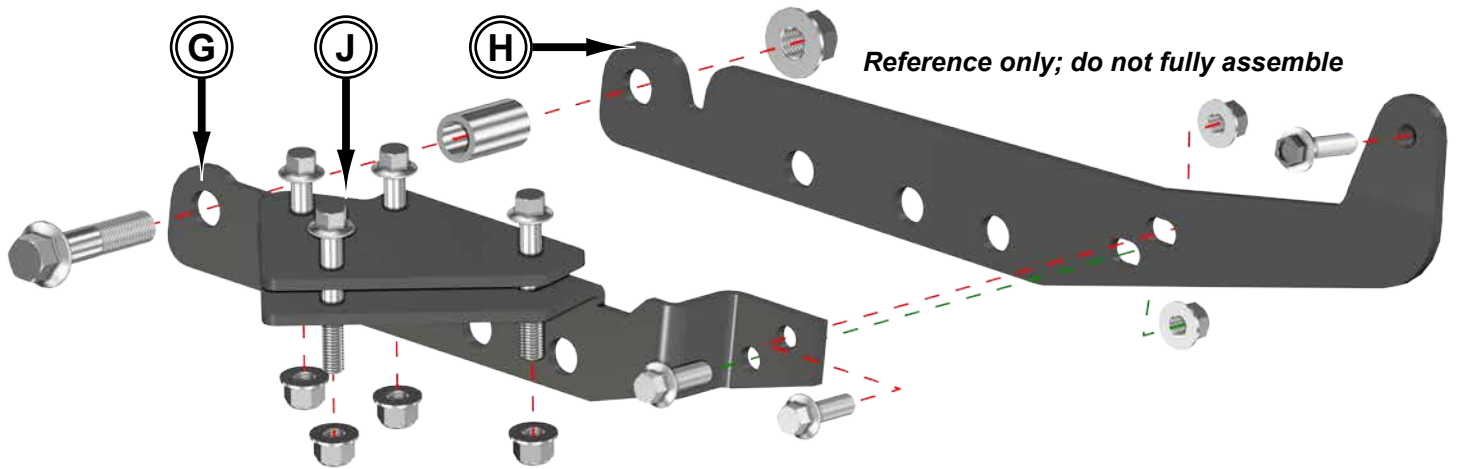
- Install Rear Shim (C) between Spindle and Trailing Arm with stock hardware. Bevel will face outside.
- Reinstall components removed from previous page.
- Tighten hardware completely and repeat steps for opposite side.

**Due to machine variations, use of Rear Shims (C) may not be required.  
If toe-in occurs after Rear Shims (C) installation; remove.**

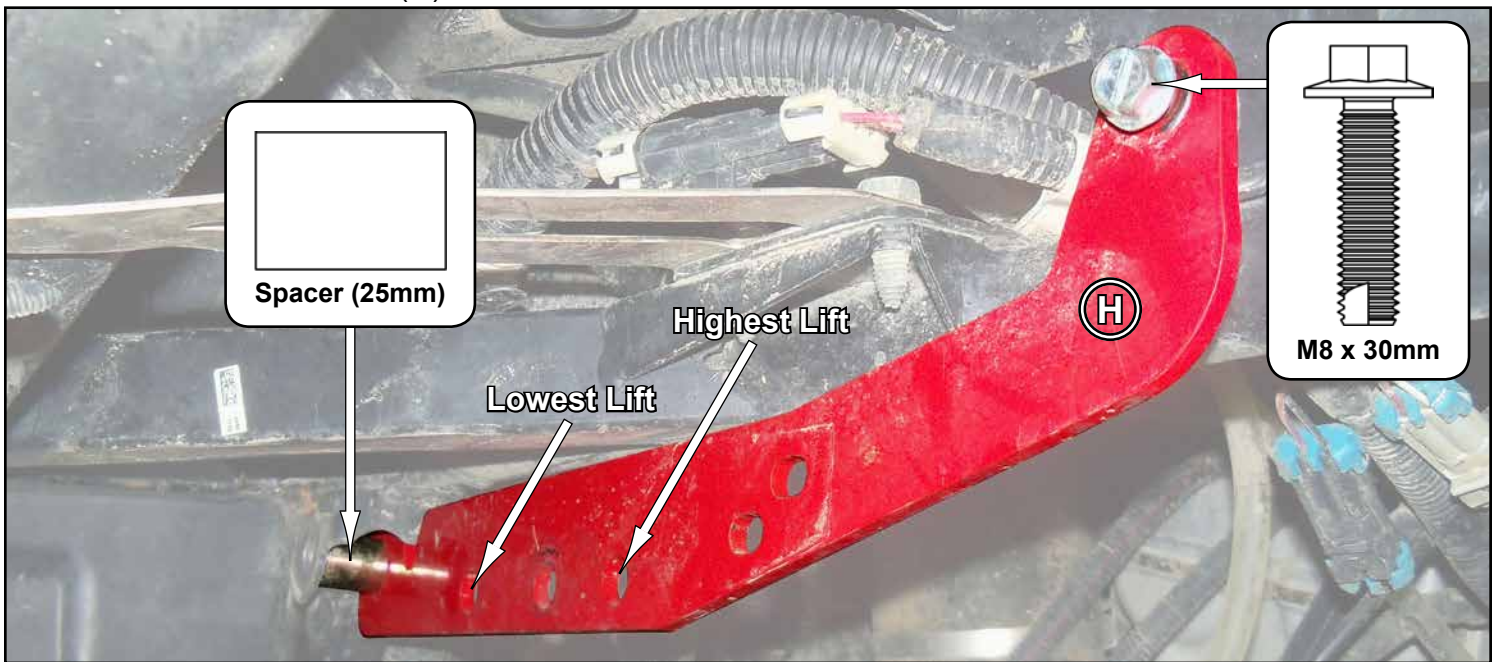


Do not tighten hardware completely unless noted.

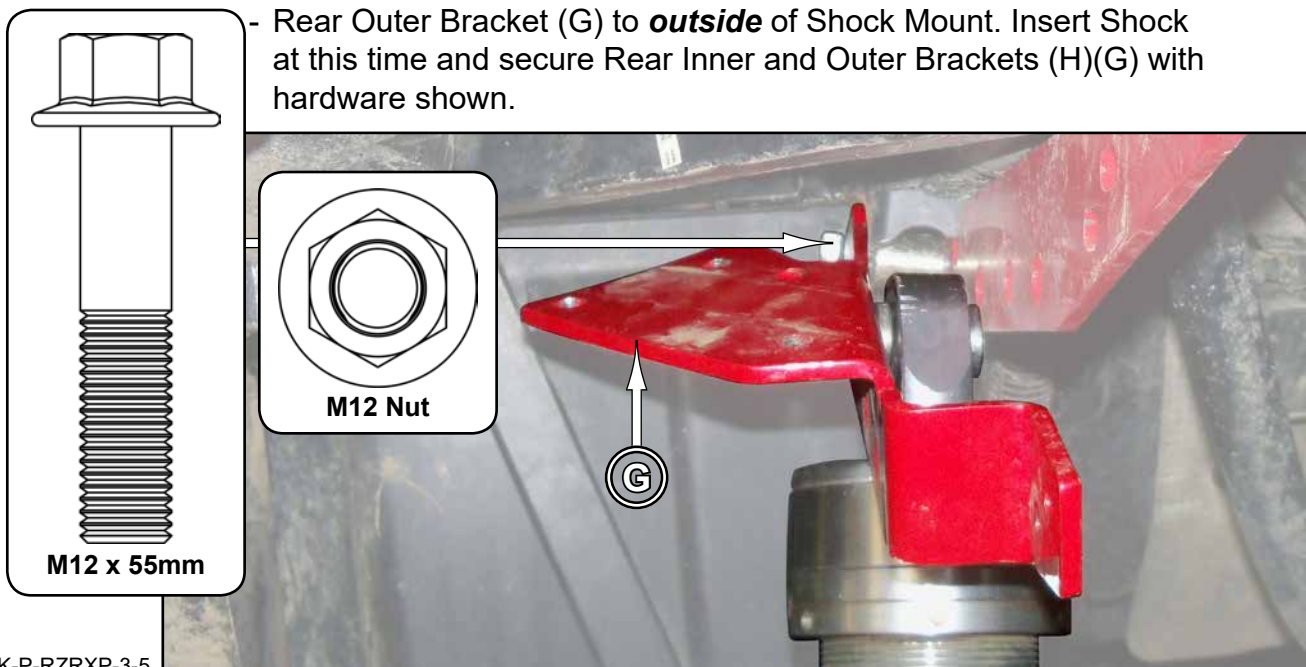
### Rear Brackets installation (Driver Side)



- Install Rear Inner Bracket (H) to **inside** of Shock Mount and Frame with hardware shown.

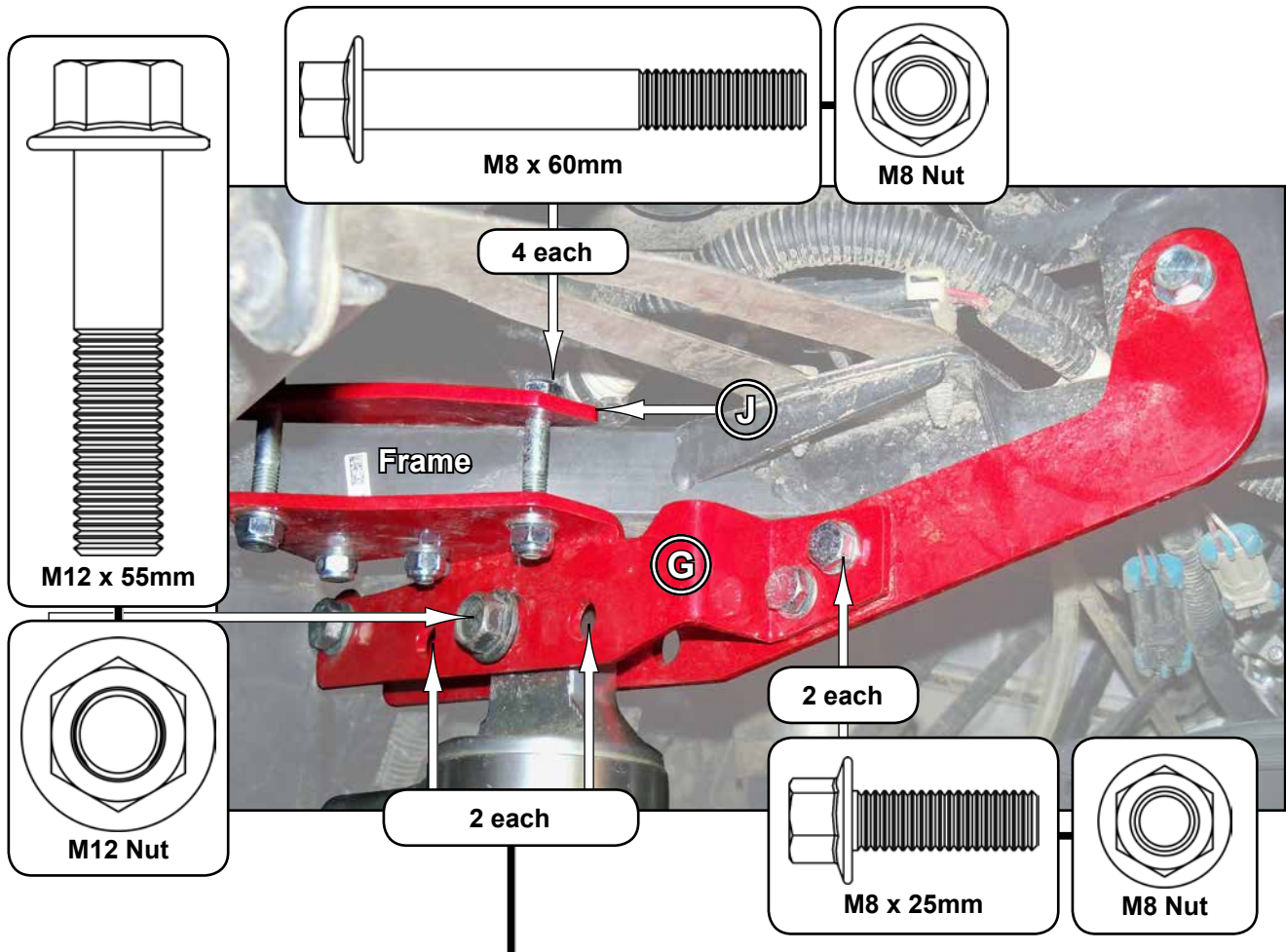


- Rear Outer Bracket (G) to **outside** of Shock Mount. Insert Shock at this time and secure Rear Inner and Outer Brackets (H)(G) with hardware shown.

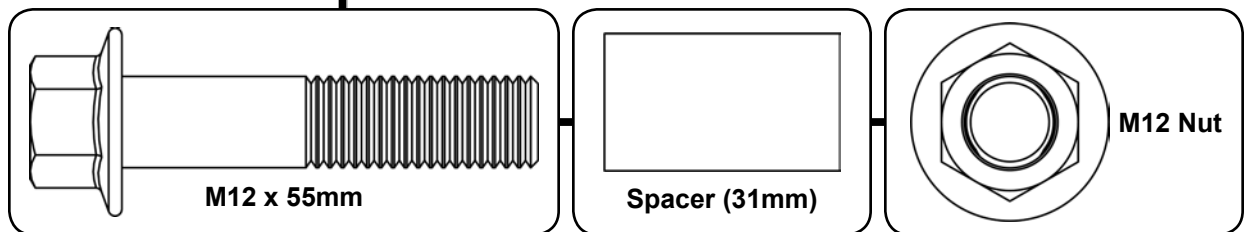


## Rear Brackets Installation continued

- Install Left Rear Clamp Block (J) over Frame and to Rear Outer Bracket (G) with hardware shown.
- Secure Shock with hardware shown.
- Join Rear Inner and Outer Brackets (H)(G) with with hardware shown.
- Tighten hardware completely and repeat steps for opposite side.



After Shocks have been installed, add hardware to remaining holes in Rear Brackets.



Shocks with resevoirs may need to be rotated 180°  
when reinstalling to achieve proper clearance.