

APE OFFROAD

2515 Bypass Rd. Flemingsburg, KY 41041
606-845-7439

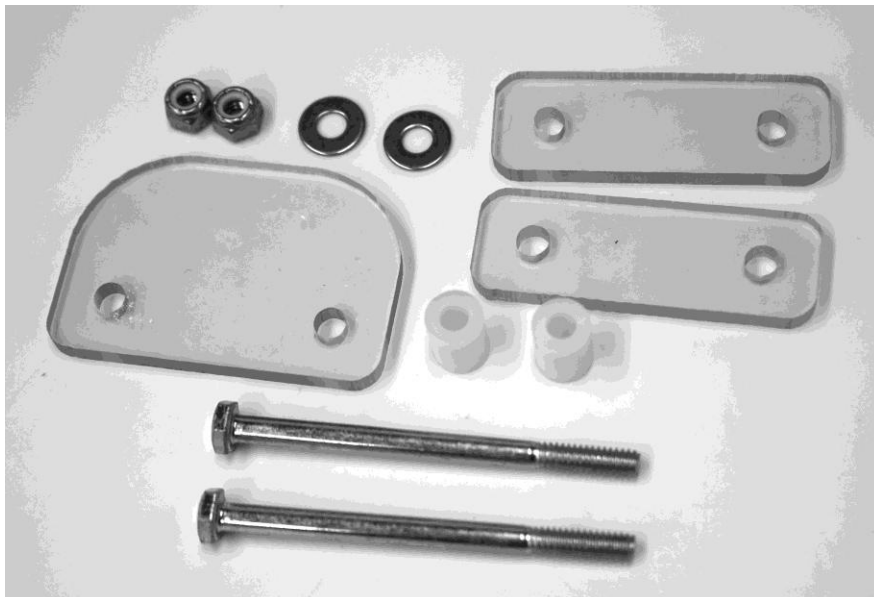
Instructions for Installation and Care of Full Polycarbonate Rear Window CA-DEFENDER-RW02

1. Check over the parts included in the cartons with the parts list shown below:

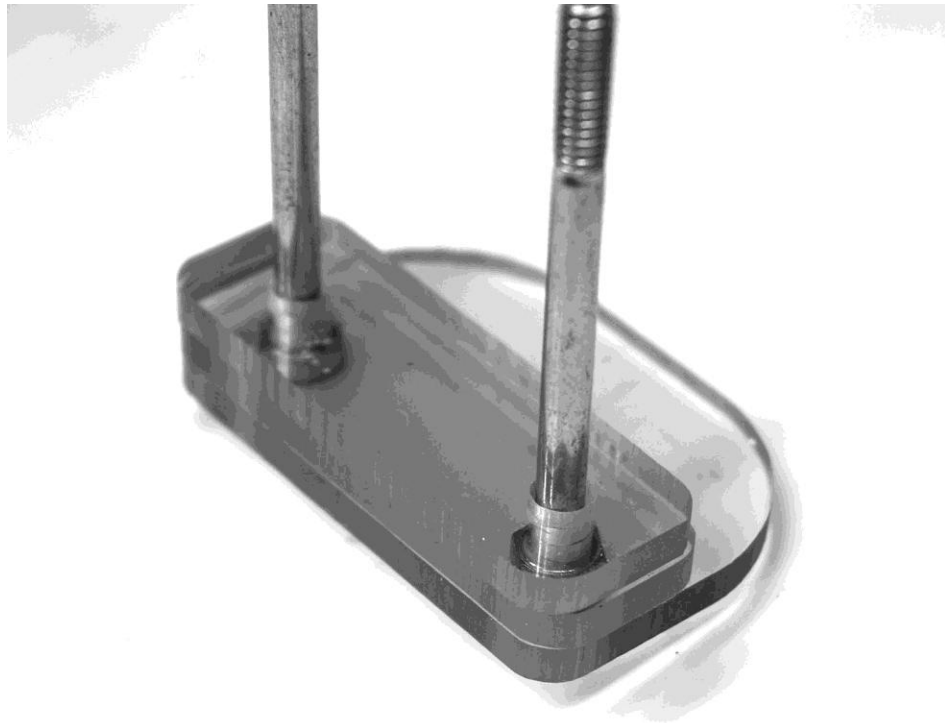
2 1/4" Stainless Bolts	4 each
1 1/4" Stainless Bolts	2 each
1 "Stainless Bolts	2 each
Metal Brackets	2 each
Nylon Spacers	8 each
Small Washers	10 each
Lock Nuts	6 each
Thumbnuts	2 each
Large Polycarbonate Pieces	3 each
Small Polycarbonate Pieces	6 each
146" Small Side Bulb Gasket	1 each
Rear Window	1 each

If any parts are damaged or missing please contact customer service at (606) 845-7439.

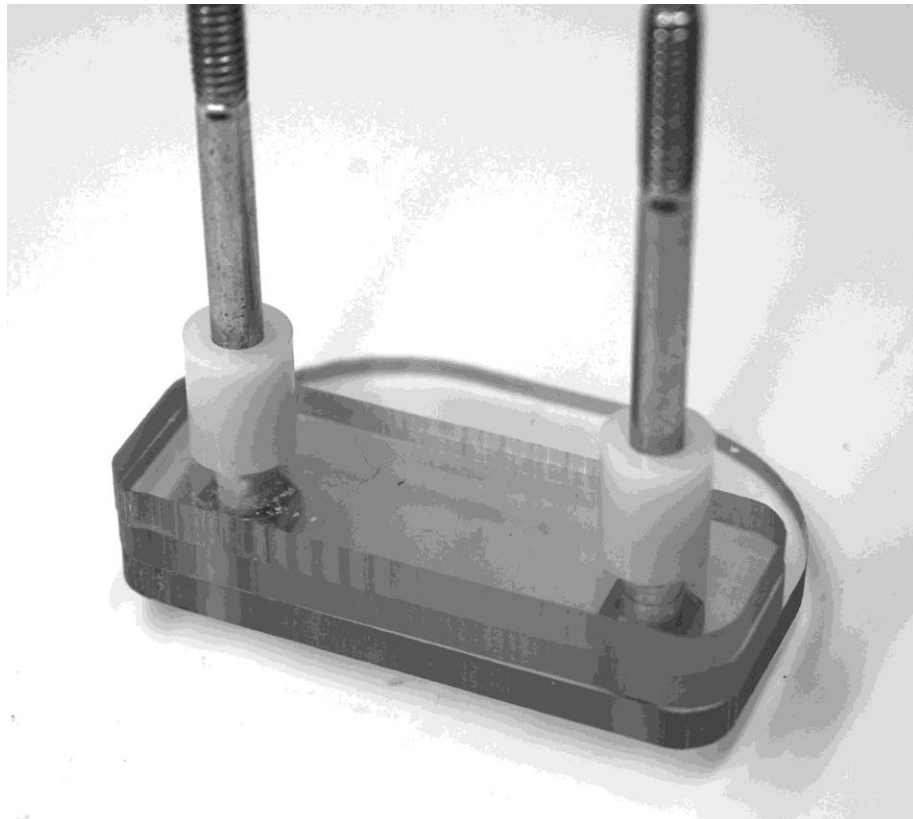
2. Start by pulling it out of the box; find a clean area to lay it down and install the hardware. Next take the rubber gasket and starting at one end firmly place along the entire outer edge of the rear window. You will need to peel back the protective film from the edge to install the gasket. If you leave the bulk of the protective film on while installing you can avoid scratching the windshield. Ensure that the gasket is seated **fully home** on the along the edge to insure a good fit of the windshield.
3. Begin attaching the two bottom brackets before you put the window on the Ranger. These brackets are made up from several different parts that must be put together first. Below is a picture of the parts needed to make the bracket.



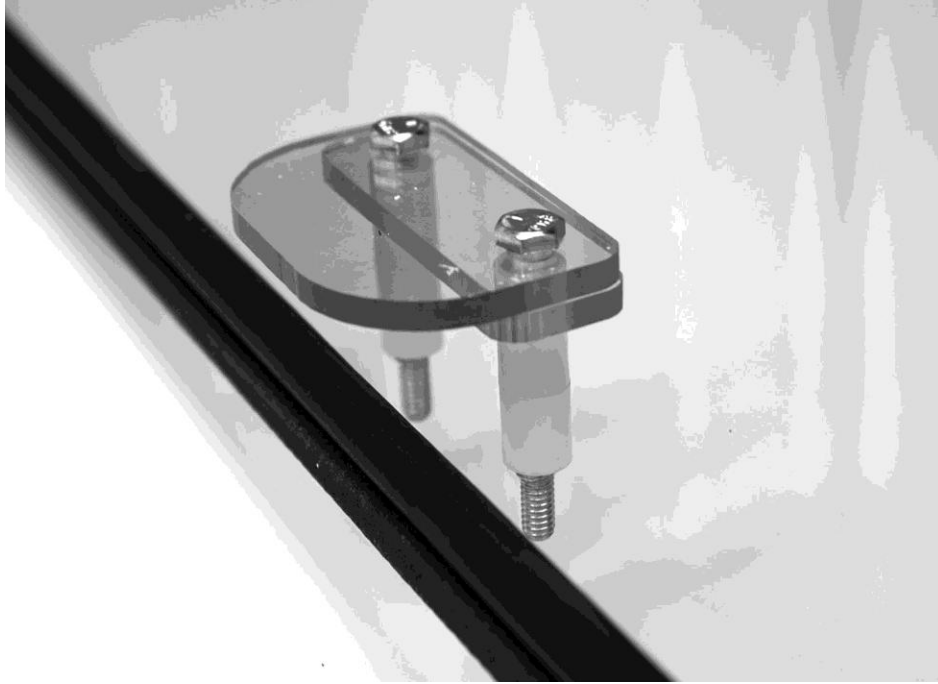
4. Take the 2 1/4" bolts and run them through the one large and one small polycarbonate pieces as shown in the photo below. Do this twice.



5. Then take the nylon spacers and put 1 of them on the bolts as shown in the photo below.



6. Now take the two plates and spacers and insert them into the holes along the bottom so that the plates are on the inside or the gasket side of the windshield. See photo below.



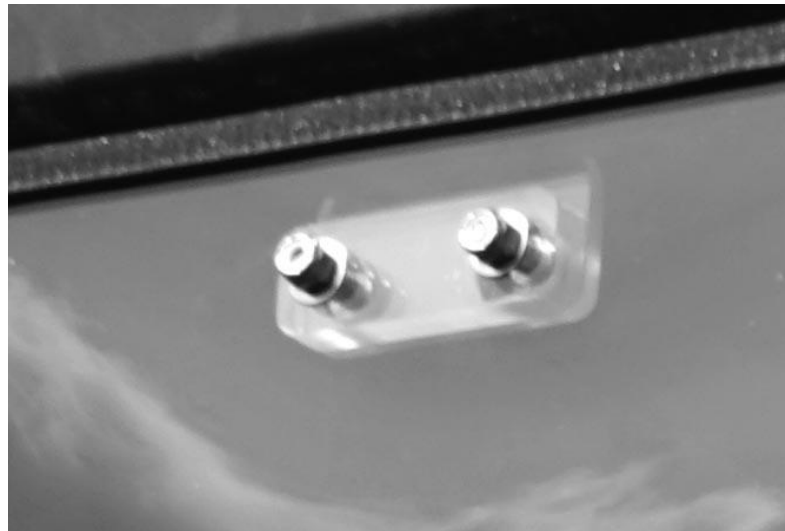
7. Now secure them in place with a small washer and lock nut on the front side of the Rear Window as shown in the photo below



8. Now that the gasket and bottom brackets are in place it's time to place the Rear Window in place on the vehicle. The brackets are designed to hold the window in place along the bottom of the frame in behind the seats as shown in the photo on the next page.



9. Once the Rear Window is in place and properly centered on the vehicle the final step is to install the brackets across the top of the window to secure it in place. This is done the same as the bottom brackets except you use no spacer. See photo below



10. On the sides you will use the metal brackets. Take a 1" bolt, washer and run them through the bracket and then through the slot along the sides from the inside out. Then screw on a thumbnut on the outside and tighten down. See the following photos.





11. Enjoy, and remember- when cleaning the rear window do so gently at first with warm water and mild detergent to dislodge any grit that may scratch the Polycarbonate. After rinsing and drying with a soft cloth, you may then polish the windshield with an appropriate commercially available plastic polish, also available from Ape Offroad. This will ensure many seasons of clarity and keep scratching and swirling to a minimum. Never use cleaners such as Windex that contain ammonia as doing so may adversely affect the rear window.

Thank you for your purchase!

Return Policy

If for any reason you choose to return this product it must be returned within **30 days from date item is received**. You **MUST** package the product exactly **as it was originally packaged from the factory to get a full refund for the product!**

The vinyl windows should never be folded when packaging in the box or for storage purposes. Lay all the windows on top of each other with the canvas folded in between and the paper (if available) on both sides of the windows.

All returned products will be inspected upon arrival at the production facility and must be in unused, factory new condition to receive refund - a 25% restocking fee will apply.

If ordered from Ape Offroad please call at 606-845-7439 to gain a return authorization number, use our preferred shipping carrier (UPS) to return the item (unless the item is defective, you are responsible for paying the shipping to return the item.) **Any returns submitted to Ape Offroad without a return authorization number will be charged a 20% restocking fee.** If ordered from one of Ape Offroad's many distributors', you must first call them and see what their return policy is. Once your item reaches our production facility, our customer satisfaction team will inspect your item to ensure unused, factory new condition. **NOTE: All windshields must be returned with the original protective film intact and not removed. Do NOT REMOVE if you have any intentions of returning the item. Refund/ replacement of a windshield will only be processed on items with original protective film or if the windshield is defective.**

Items must be properly packaged in the original shipping carton to protect them during transit and ensure your returned item arrives back factory fresh, and in new resalable condition (**any returned items that have been used, altered or damaged in any way will not be subject for a refund.**) All contents including instruction manuals, accessories, hardware, Velcro, etc. must be included in your return shipment. Only items in OEM factory new condition will be approved. Once returned items are received, credit will be issued to the original credit card/ payment method used for the purchase. Outbound shipping and return shipping cost will not be refunded. Please allow 4 to 6 weeks for your refund to be processed.

Warranty

To The Owner of this Product:

Thank you for purchasing one of Ape Offroad Cab Enclosures, Tops &/or Windshields! Below are the terms under which your product is covered under our manufacturer's warranty.

30 Day Warranty which includes and is not limited to replacing the enclosure, tops and/or windshield due to defect of the product. Please refer to the return policy in this case for more information.

1 Year Warranty includes any defect in material or workmanship within this time frame we will gladly correct the problem or replace the enclosure, tops &/or windshield. Upon submitting for the correction or replacement we will need to receive pictures of the defect in material or workmanship along with the receipt from the date of purchase.