

## CF Moto U-Force 600 (2021 - Current) Direct-Fit Cab Heater with Defrost

312

### STEP 1: PRE-INSTALLATION

- 1) Raise the hood.
- 2) Loosen the upper dash panel by removing the bolts and plastic rivets holding it in place.
- 3) Remove the connectors from the winch wire harness (**PIC01**).
- 4) Remove the lower dash panel (**PIC02**) and cut the cubby hole off the dash. Leave about 1-inch of depth.
- 5) Using the rivets provided, mount the plastic cutout in the cubby hole (**PIC03**).

### STEP 2: MOUNTING THE HEATER

- 6) Set the heater in place and mark the (4) mounting locations on the heater brackets and the (2) spots where the heater hose will exit the firewall (**PIC04**) (**PIC05**).
- 7) On the (2) marks where the heater core fittings will exit the firewall, use a 1-3/8" hole-saw to drill out the holes and insert the (2) rubber grommets included with the kit (**PIC06**).
- 8) On the (4) bracket hole marks, use a 1/4" drill bit to pilot holes for the bolts.
- 9) Install (2) 2-foot runs of heater hose on the heater core fittings and secure with the hose clamps provided.
- 10) Install a 32" piece of duct on the rear driver side heater box outlet and a 68" piece of duct on the rear passenger side heater box outlet, using the zip ties provided (**PIC05**).
- 11) Slide the heater hose through the rubber grommets and hold the heater in place where it will be mounted.
- 12) Slide the (4) bolts through the holes and have a partner install the washers and nuts on the other side of the firewall (**PIC07**) (**PIC08**).

### STEP 3: SPLICE INTO THE COOLANT LINES

- 13) Using clamps, pinch off the upper (inlet) and lower (return) radiator line on each side of where you will make your cut (**PIC09**) (**PIC10**).
- 14) Make cuts into the radiator lines and install the Y-Fittings, secure with hose clamps provided (**PIC09**) (**PIC10**).
  - Make sure both the splices are pointing towards the radiator to keep with flow going to and coming from the heater.
- 15) Take the (2) runs of heater hose from the heater core and attach them to the Y-fittings, secure with the hose clamps provided. It does not matter what hose from the heater core installs on which Y-fitting.

### STEP 4: INSTALL LOUVERS

- 16) For the defrost vents, set the grill on the defrost locations and mark each screw hole.
- 17) Drill out the two screw holes with a 1/4" bit and drill out two 1/2" holes inside each screw hole. Make cuts connecting the two 1/2" holes with a razor blade (**PIC11**).
- 18) Hold the backside adapter underneath the dash panel and set the grill on top. Use the screws provided to drill through the grill and into the adapter (**PIC12**).

- 19) Connect the (2) defrost vent duct runs from the heater box to the defrost vent adapters with the zip ties provided. **Note** that the passenger side defrost duct run goes up and around the glove box (**PIC13**).
- 20) Install the lower dash panel back onto the machine.
- 21) Using the louver cutout templates provided, tape in the locations shown on **PIC14** and **PIC15** and drill a 1/8" pilot hole for the hole-saw.
- 22) Using a 2.5" hole saw drill holes for the floor louvers.
- 23) The louvers provided are 2-piece louvers, screw the louver faces off from the adapters on both louvers.
- 24) Install the duct clips onto the louver adapters, then slide 14" pieces of duct onto the adapters and secure with the zip ties provided.
- 25) Set the louver faces into the holes and screw the adapters on from the backside.
- 26) Attach the (2) runs of duct to the two open heater box outlets using the zip ties provided.

#### **STEP 5: WIRING**

- 27) Install the rocker switch into a factory switch opening.
- 28) Using the wiring harness, plug the switch connector into the back of the rocker switch.
- 29) Using the wiring harness, plug the white connector into the heater blower connector.
- 30) Locate the 12v accessory power plug on the dash (**PIC16**). From the backside of the dash, disconnect the factory 12v connector and put our splice wiring harness in-line with the factory connectors.

#### **STEP 6: REFILL COOLANT**

- 31) Refill the radiator and check for leaks.
- 32) Start the machine and allow the engine to warm up and circulate the coolant.
- 33) Drive the vehicle and put it under a good load, this will help expel air from the system.
- 34) When done let the machine cool down, recheck the coolant level and refill if needed.
- 35) Coolant will be consumed as the air is expelled from the system. You may need to run the machine and recheck fluid levels multiple times before working out all the air.



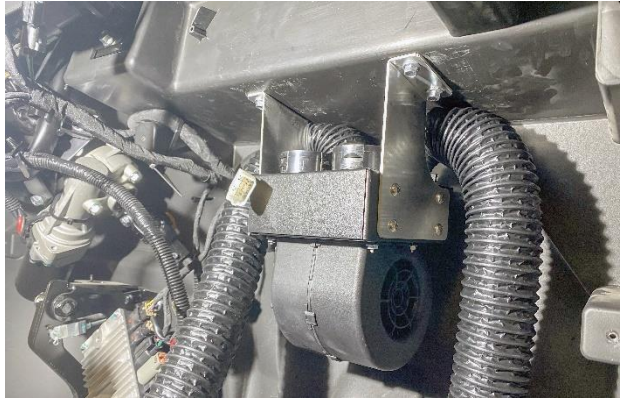
PIC01



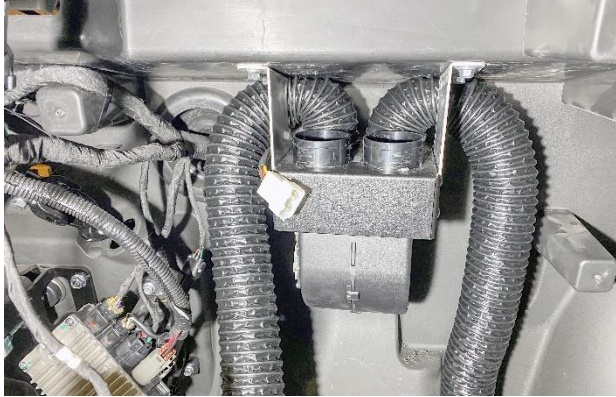
PIC02



PIC03



PIC04



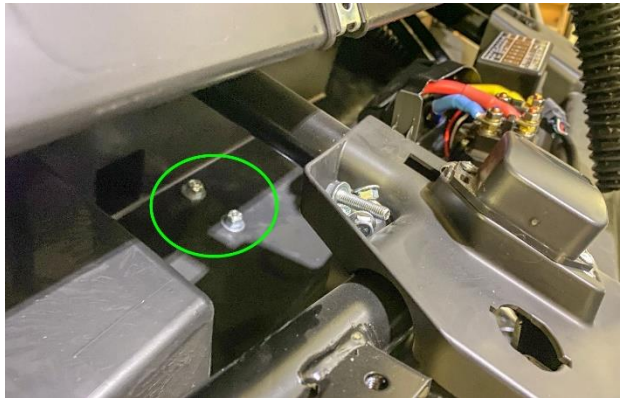
PIC05



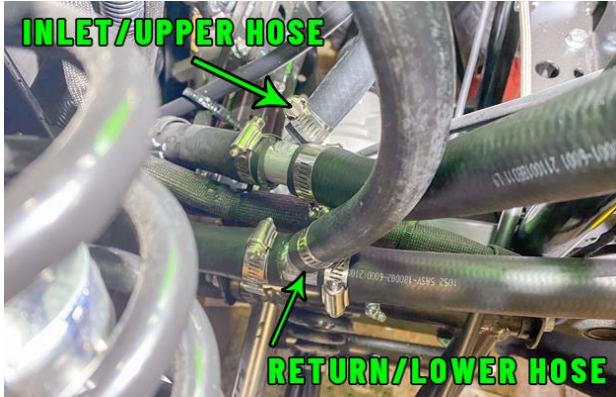
PIC06



PIC07



PIC08



PIC09



PIC10



PIC11



PIC12



PIC13



PIC14



PIC15



PIC16

