

Polaris Ranger 800 (2010 - 2015)
Polaris Ranger Diesel 800 Frame (2012 – Late 2014)
Direct-Fit Cab Heater with Defrost

STEP 1: PRE-INSTALLATION

- 1) Raise the hood.
- 2) Remove the driver side inner fender (to access the radiator lines).

STEP 2: INSTALL LOUVERS AND DUCT

- 3) Set the defrost louver cut-out template in position (**PIC01**) lining up the center line on the ridge. Drill pilot holes on the center dot.
- 4) Set the floor louver cut-out templates in position (**PIC02**). Drill pilot holes on the center dot.
- 5) Take the louvers and screw off the back adapters (**PIC03**). Install the duct barbs on the adapters for extra hold and connect the (4) runs of duct.
 - Use 24” runs of duct for the floor louvers and 18” runs for the defrost louvers.
- 6) Using a 2.5” hole-saw, cut the louver openings.
- 7) Insert the face pieces into the holes and screw on the adapters from the backside of the dash panels (with duct attached) (**PIC04**) (**PIC05**) (**PIC06**).
- 8) Now attach the other end of the duct to the heater box adapters (**PIC07**).
 - The heater box will be set in the area it will be mounted, but do not mount until **STEP 4**.

STEP 3: WIRING

- 9) Remove one of the factory switch plates and install the rocker switch.
- 10) Using the wiring harness provided, plug the switch connector into the back of the rocker switch.
- 11) Using the wiring harness provided, plug the blower fan connector to the heater box blower.
- 12) Using the wiring harness provided, run the accessory 12v and ground eyelets to the accessory bar (**PIC08**).
- 13) Once the wiring is complete test the blower.

STEP 4: INSTALLING THE HEATER BOX

- 14) Cut a 4-foot piece of heater hose and attach it to the upper heater core fitting. Attach the remaining 3-foot piece to the lower heater core fitting, secure with hose clamps provided.
 - Use the white notches on the heater hose to measure.
- 15) Set the heater box in place and on the passenger side mounting tab use the (2) self-tapping screws provided to mount it to the framing bar (**PIC09**).
 - The (2) holes on the mounting tab line up with the factory holes on the framing bar.

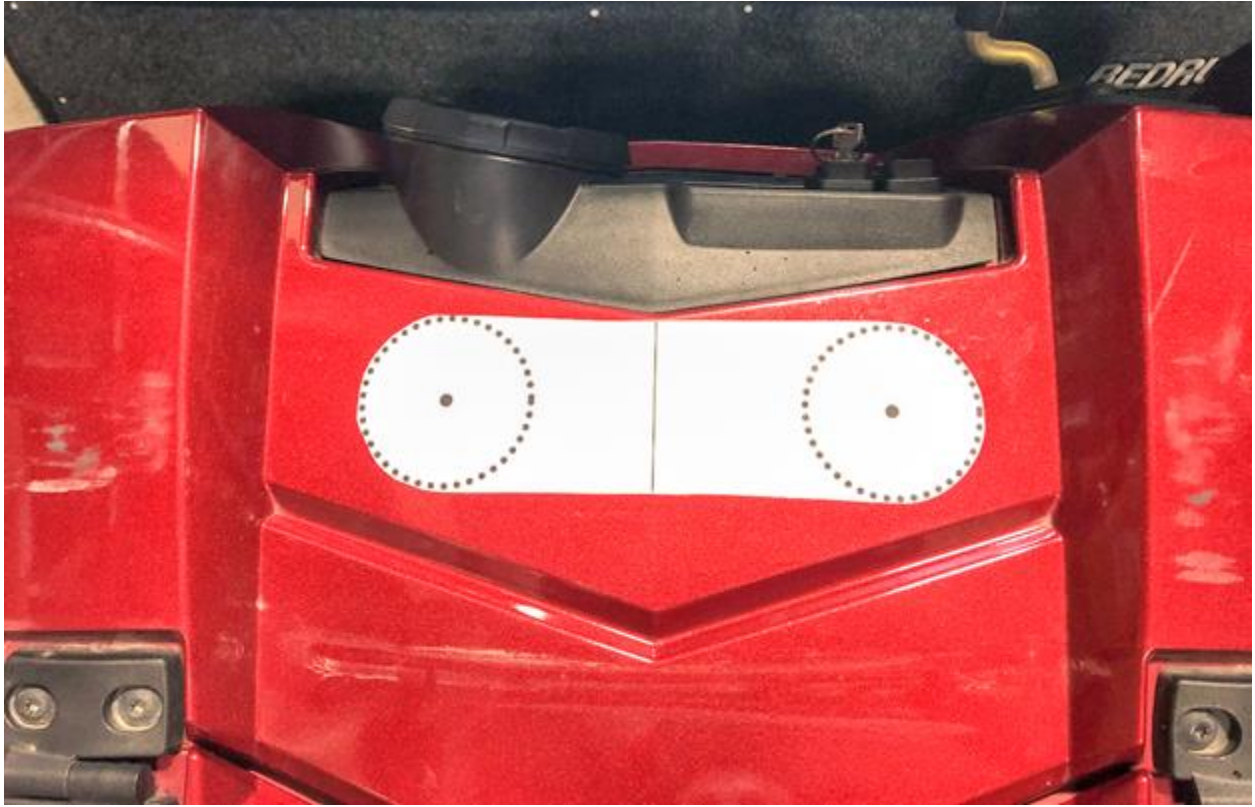
- 16) On the driver side mounting tab use a 3/16" bit and pilot a hole for the rivet (included in the kit).
- 17) Install the rivet into the panel (**PIC10**).

STEP 5: SPLICE INTO COOLANT LINES

- 18) Notch out an opening on the firewall panel, this will be used to run the heater hose down to the Y-Fittings (**PIC11**).
- 19) Feed the heater hose to the opening but leave some slack, you do not want to kink the heater hose (**PIC12**).
- 20) Using clamps, clamp off on each side of the upper radiator line where you will cut in to install the 1" Y-Fitting (**PIC13**), once installed, secure with the hose clamps provided.
 - Make sure the 5/8" splice is pointing toward the radiator (up in this picture). You want the coolant to flow to the heater in the same direction it is coming from the engine.
- 21) Run the inlet (lower) heater hose from the heater box to the Y-Fitting, secure with the hose clamps provided.
- 22) Using clamps, clamp off on each side of the lower radiator line where you will cut in to install the 1" Y-Fitting (**PIC14**), once installed, secure with the hose clamps provided.
 - Make sure the 5/8" splice is pointing toward the radiator. You want the coolant to flow back to the engine in the same direction it is coming from the radiator.
- 23) Run the return (upper) heater hose from the heater box to the Y-Fitting, secure with the hose clamps provided.

STEP 6: REFILL COOLANT

- 24) Refill the radiator and check for leaks.
- 25) Start the machine and allow the engine to warm up and circulate the coolant.
- 26) Test drive the vehicle and put it under a load, this will help expel air from the system.
- 27) When done let the machine cool down, recheck the coolant level and refill coolant.
- 28) Coolant will be consumed as the air is expelled from the system. It is possible you will need to run the machine and recheck fluid levels multiple times before working out all of the air.



PIC01



PIC02



PIC03



PIC04



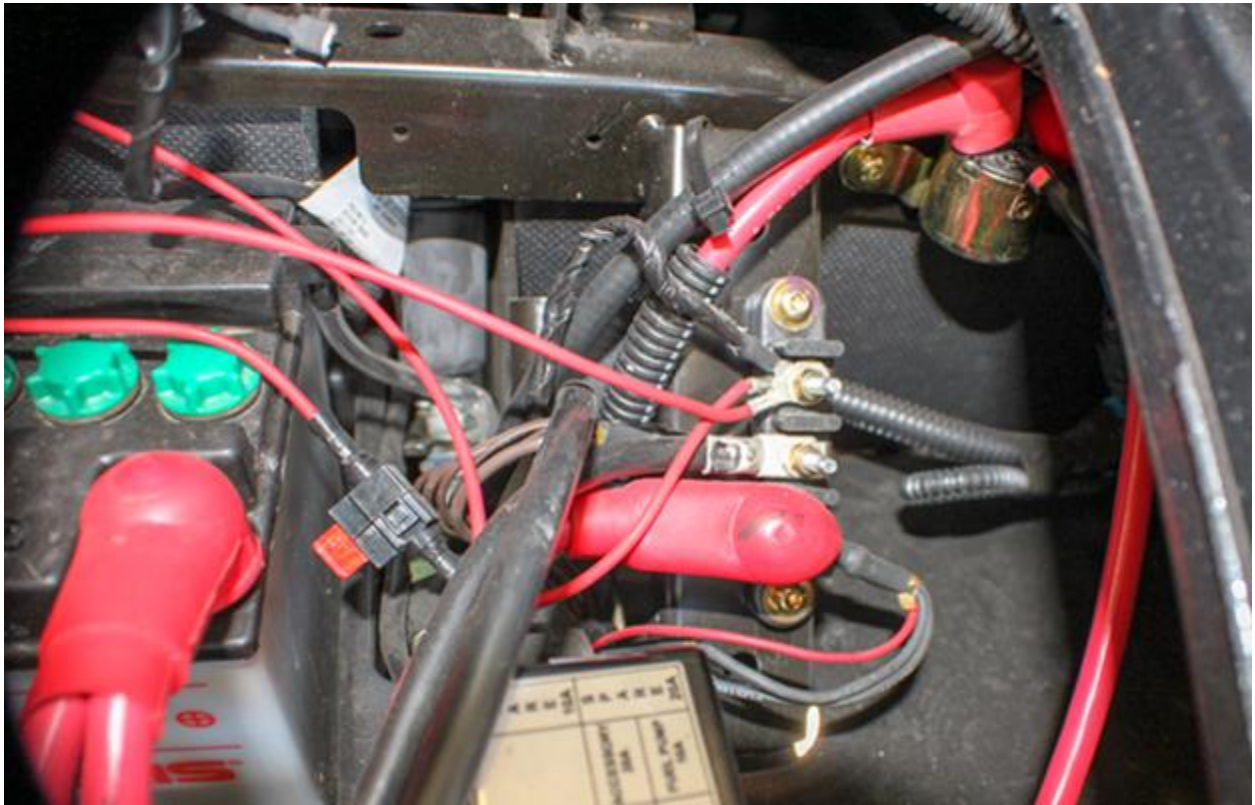
PIC05



PIC06



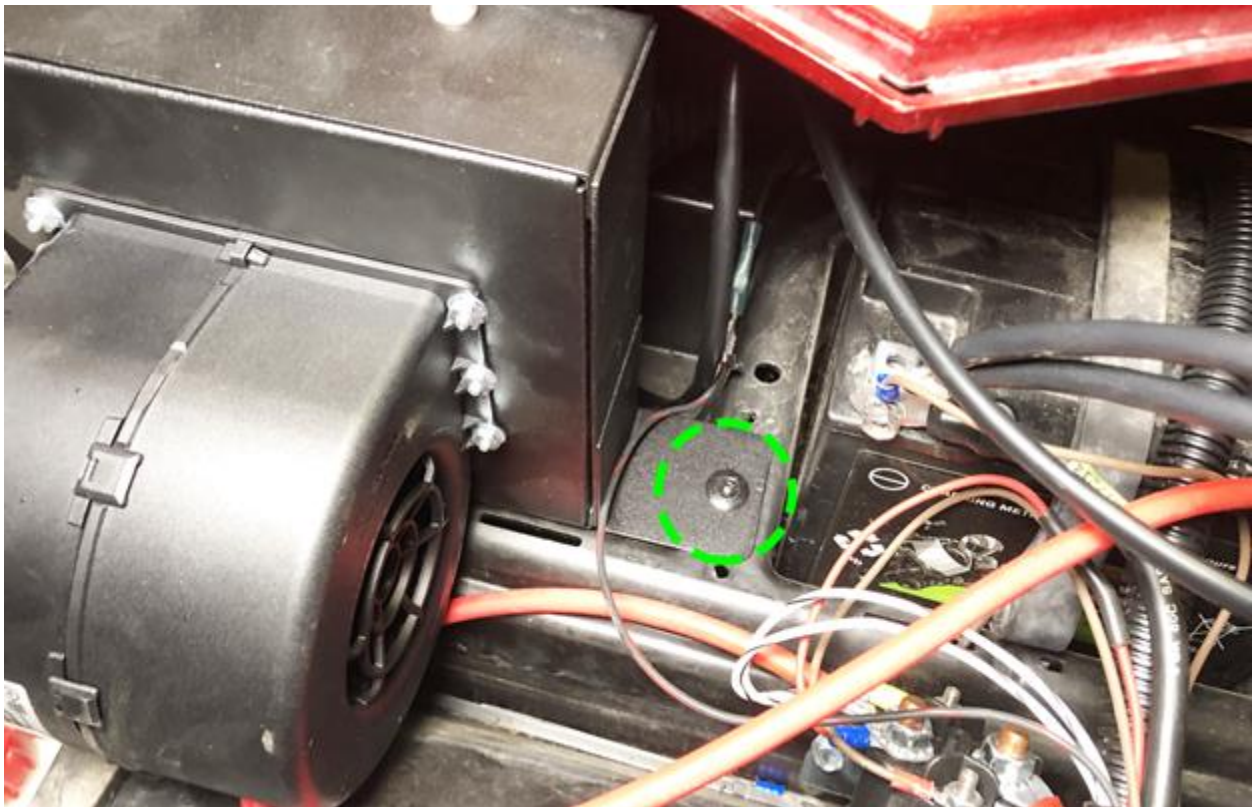
PIC07



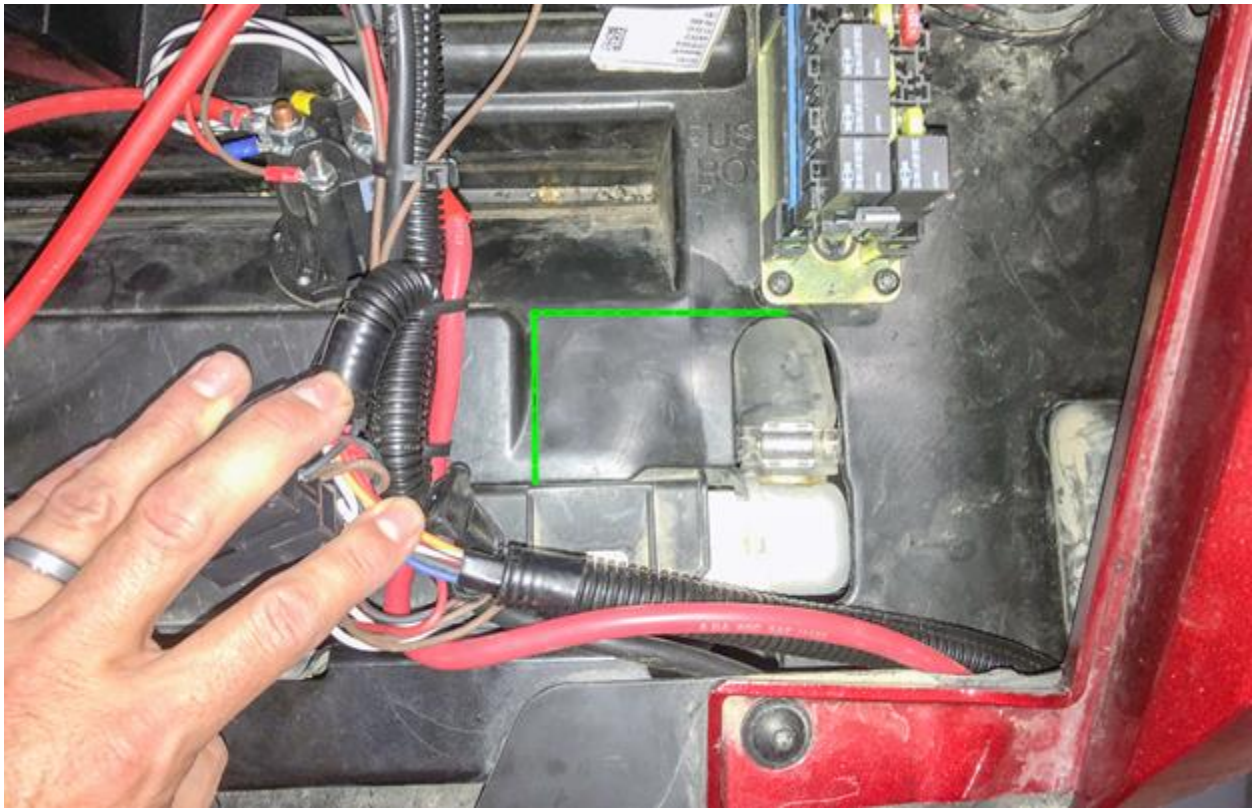
PIC08



PIC09



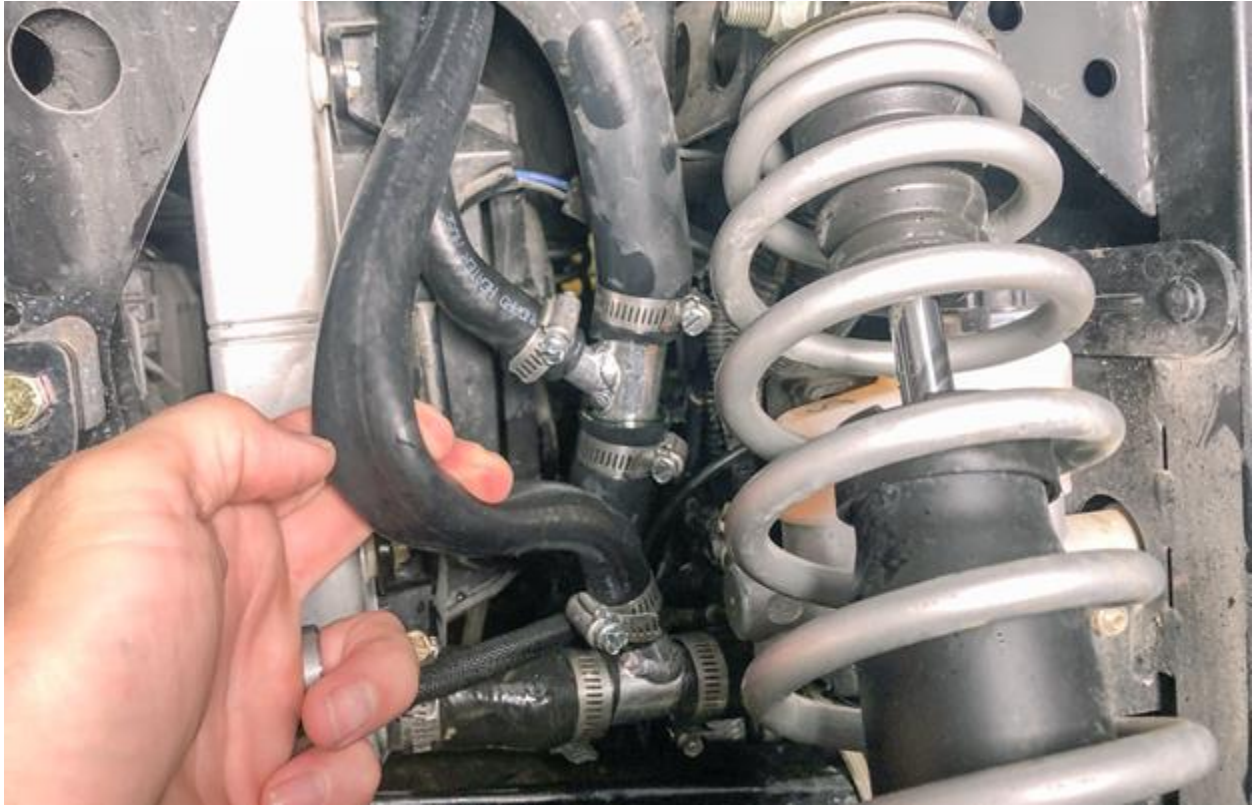
PIC10



PIC11



PIC12



PIC13



PIC14

