

# Reduce your payroll time & costs

Using the latest facial recognition technology

Facial biometric clocking in system

BioTime Face

The more reliable,  
faster alternative  
to fingerprint readers

## BioTime Face Facial biometric clocking in system

Employees clock in and out with their face -  
Completely eliminating attendance fraud.

- ✓ Eliminates attendance fraud, saving you on average 2 - 5% on payroll costs - no more paying for time employees are not present.
- ✓ Hygienic, non-contact facial recognition system recognises employees in less than a second - Simply look and go.
- ✓ Comprehensive software calculates employees' hours and overtime according to your working patterns, saving you time and money.
- ✓ Graphical holiday, sickness and absence planning allows you to manage who is away and when, ensuring too many employees are not away at the same time.
- ✓ Expanded report suite with detailed and summary reports.
- ✓ Built in key fob or card reader for employees or contractors that it may not be practical or convenient to biometrically setup.



Employees clock in & out  
using their face



Clocking data is collected  
via network or USB



View and edit employee  
information on screen



Produce reports to print  
or export to a file



Export payroll data to your  
Sage Payroll Package

## The future of biometrics is here...

The BioTime Face clocking in system positively identifies each employee by scanning their unique facial profile - completely eliminating employees clocking in and out for each other. This latest generation biometric technology is a hygienic, robust and more reliable alternative to fingerprint readers as the employee does not need to touch the reader.

When employees clock in and out the clocking data is sent across your network to your PC or can be collected on a USB memory stick. The BioTime Facial software then automatically calculates each employees working hours based on your working schedules or shifts. The user friendly software allows you to view everything on screen and edit data as required, before printing reports or exporting data into a payroll package such as Sage Payroll.

The BioTime Face clocking terminals can be located at remote sites and send their data back to a central location, allowing you to stay in control of your employees' time and attendance at all times.

## The BioTime Face clocking terminal

Latest generation in biometrics provides unsurpassed reliability and completely eliminates attendance fraud.

Simply look and go to clock in and out.

Non-contact and ultra hygienic.

Large clear display and audible confirmation of employee clockings.

Quick and easy to setup for new starters.

TCP/IP Network connection or USB Memory Stick collection.

Mains powered (includes plug in transformer).

Wall mounted (Includes wall mount and accessories).

ABS Construction with optional robust case (shown on the right)

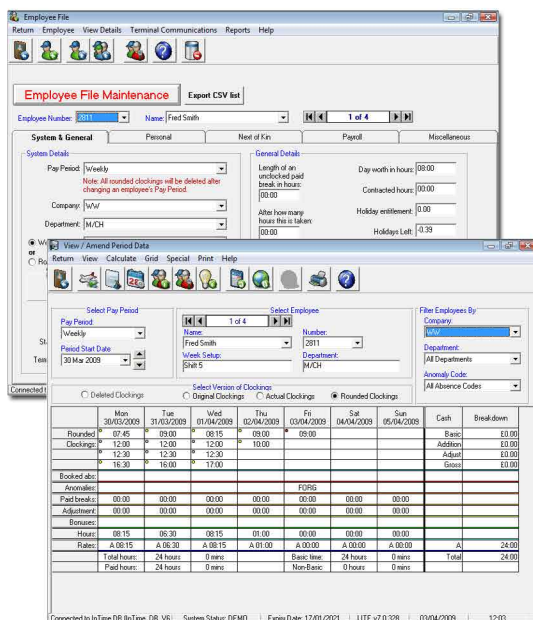
Built in RFID card reader for temporary employees where biometric enrollment is not convenient.

Dimensions: 210 x 82 x 42mm (H x W x D)



Optional robust enclosure

## The BioTime Face software



Calculates all types of working hours and overtime, removing all manual calculations saving time and money.

Standard or flexible working times for each day of the week may be setup per employee or groups, with easy to follow setup wizards.

Automatic highlighting of anomalies - lateness, absence, missed clockings, exceeded breaks etc.

Allows lunch and break clockings or automatic deductions.

On screen editing of clocking data and automatic re-calculation of hours. (Audit log to show if clockings have been added or altered).

Advanced leave recording for holidays, sickness, training etc, with the ability to create customised leave types.

Comprehensive reporting suite with detailed and summary reports for employees and departments including working time directive report.

Extremely easy to setup and use Windows software for single PC or network installations.  
(Compatible with all Windows operating systems).

Export facility to Microsoft Excel and link to payroll packages.

Built in backup and restore facility for the database, with an archive database for leavers.

- BioTime Face Package for 15 Employees - Price **£325**
- BioTime Face Package for 30 Employees - Price **£425**
- BioTime Face Package for 70 Employees - Price **£525**
- BioTime Face Package for 120 Employees - Price **£625**
- BioTime Face Package for 200 Employees - Price **£725**

All packages include Clocking Terminal, Network Cable, USB Memory Stick, Software, Full Instructions, 12 Months Support and Free Delivery

