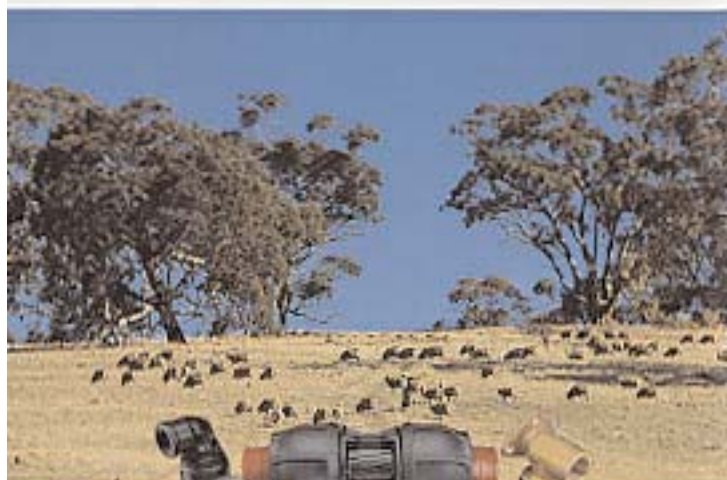


Philmac Rural fittings.



**The best polypipe
fittings
in the country.**

For full information
contact your nearest Philmac office

SA (08) 8300 9300 NSW (02) 9534 1555
VIC (03) 9544 4811 QLD (07) 3277 9122
WA (08) 9451 6944 NT (08) 8947 0458
TAS (03) 6334 6388

Philmac[®]

Philmac Pty Ltd
53-59 Deeds Road North Plympton
SA 5037 Australia
Telephone (08) 8300 9200
Facsimile (08) 8300 9390
Web: <http://www.philmac.com.au>

Philmac **GPS**

Proudly exporting to global markets.

Glynwed

A Glynwed International company

LE/097/895

The only Australian-made plastic fitting for rural polypipe!



Philmac Rural fittings

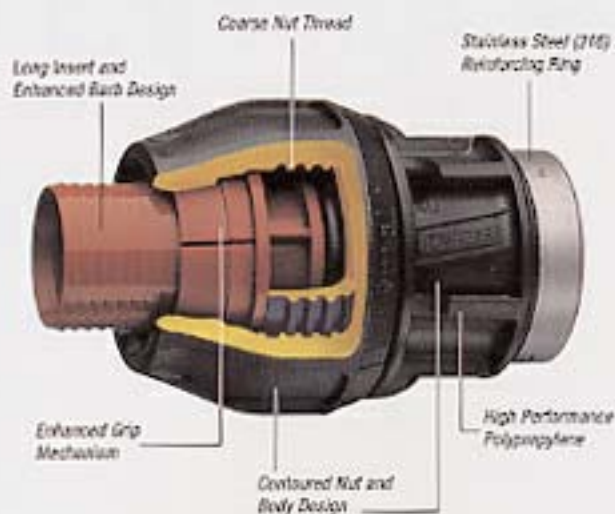
Philmac[®]

Making water work for you!

The secret is in the design.

Philmac Rural, with distinctively coloured terracotta inserts, is the latest generation fitting specifically designed for joining Australian rural polypipe.

Just look at these unique features and benefits:



The insert has a tapered lead-in for easy insertion into the pipe and the split ring is especially designed to grip directly over the insert barbs providing a more positive grip and seal.

A special retention lip is moulded on the insert to hold the O-ring in position, making the fitting especially suitable for live connections.

The long insert design also makes the Philmac Rural fitting ideal for bore pump installations and also provides superior bending grip.

Simple, quick, tough and reliable.

The design incorporates a coarse thread which allows for positive hand tightening.

It makes joining polypipe so simple - all you need is a hacksaw, a mallet and a pair of hands.

The coarse thread profile also minimises the likelihood of grit and dirt lodging in the fitting during installation, especially when working in trenches.



Latest technology high performance polypropylene materials provide a tough and durable construction giving greater strength and impact resistance and superior UV, chemical and corrosion resistance, ensuring long and trouble free service life.

All female BSP threaded fittings from 1-1/4" and above are fitted with 316 stainless steel reinforcing ring for maximum performance.

The Philmac Rural Fittings range has got you covered.

- **RURAL FITTINGS:** straight and reducing joiners, male and female end connectors, tees, elbows, end caps and blanking sets in sizes 1/2" through to 2".
- **RURAL WALL PLATE ELBOW:** a professional method of connecting 1" rural polypipe to a 3/4" tap mounted onto a wall or post.
- **RURAL TRANSITION FITTINGS:** joiners to connect rural to metric pipe, conversion kits to change metric fittings into rural fittings and Rural Universal Transition Couplings, from 3/4" to 1-1/4" which can connect rural pipe to either galvanised iron, PVC or copper.
- **RURAL TAPPING SADDLES:** as an alternative to tee fittings, Philmac offers a range of high quality tapping saddles for use with rural polypipe.

Tapping Saddles, are available in sizes 1/2" to 2" and are offered with corrosion resistant zinc plated or optional stainless steel fastenings.
- **THREADED FITTINGS:** The Philmac range of BSP pattern threaded fittings is now bigger and better than ever. With the addition of new products, the range now includes all commonly requested sizes.
- **ELECTROFUSION FITTINGS:** Where a water transfer system requires the permanent welding of polyethylene pipe, Philmac offers a wide range of high and low pressure electrofusion fittings.