















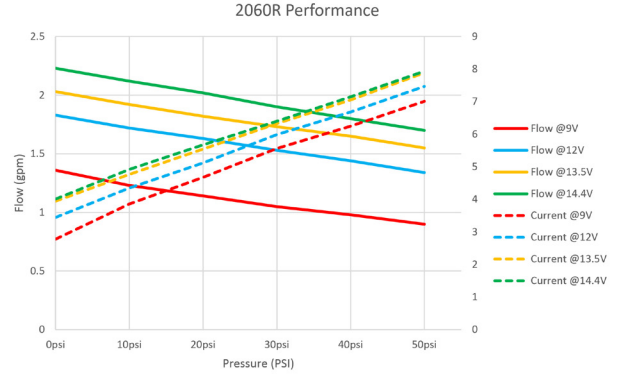
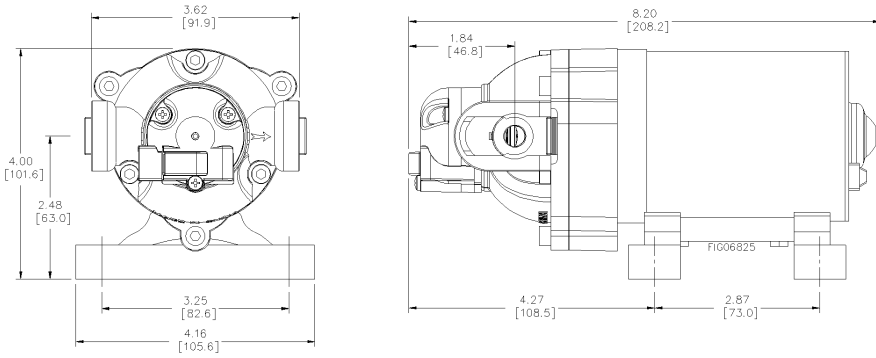
NorthStar RV Pumps

Fresh Water 12V Diaphragm Pumps

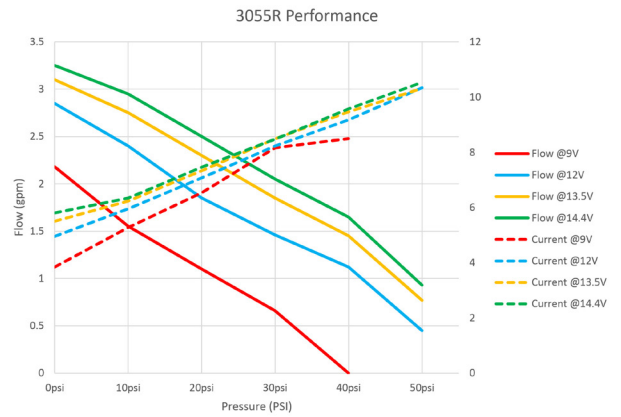
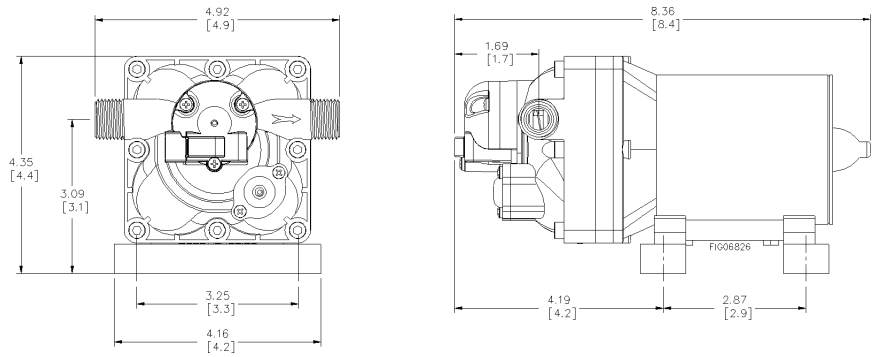
New from a trusted name in the agriculture market, these NorthStar® NSQ Series™ on-demand 12V pumps are specifically designed for the RV industry. These fresh water diaphragm pumps deliver extended life and performance with internal bypass, thermal protection, and no rapid cycling.

			
Model	2060R	3055R	5055R
Max Flow	7.6 liters/min (2.0 gpm)	11.4 liters/min (3.0 gpm)	18.9 liters/min (5.0 gpm)
Max Pressure	4.1 bar (60 psi)	3.8 bar (55 psi)	3.8 bar (55 psi)
Internal Bypass	No	Yes	Yes
Ports	3/4in. QC	1/2in. NPSM	1/2in. NPSM
Priming	2.4m (8-ft.)	3.0m (10-ft.)	3.0m (10-ft.)
Liquid Temperature	55°C (130°F)	55°C (130°F)	55°C (130°F)
Weight	2.27 kg (5 lbs)	2.50 kg (5.5 lbs)	2.72 kg (6.0 lbs)
Dimensions	225 x 102 x 93 mm (8.84 x 4.02 x 3.65 in.)	207 x 125 x 110 mm (8.15 x 4.92 x 4.33 in.)	207 x 125 x 110 mm (8.15 x 4.92 x 4.33 in.)
Wetted Materials	Plastics: Polypropylene, Nylon Diaphragm: Santoprene Valves/Seals: EPDM Check Valve Spring: Stainless steel	Plastics: Polypropylene, Nylon Diaphragm: Santoprene Valves/Seals: EPDM Check Valve Spring: Stainless steel	Plastics: Polypropylene, Nylon Diaphragm: Santoprene Valves/Seals: EPDM Check Valve Spring: Stainless steel
Approvals/Certifications	CE, NSF ANSI 61, CSA Z240.3.2 IPX1 Protection, IAPMO Class Type IV	CE, NSF ANSI 61, CSA Z240.3.2 IPX1 Protection, IAPMO Class Type IV	CE, NSF ANSI 61, CSA Z240.3.2 IPX1 Protection, IAPMO Class Type IV
Filter / Strainer			
Standard Fittings			
John Guest Fittings			

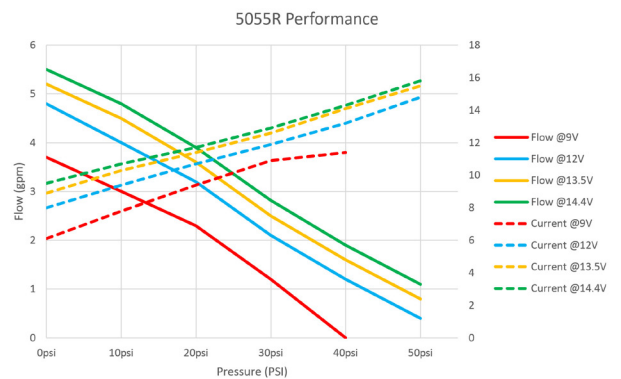
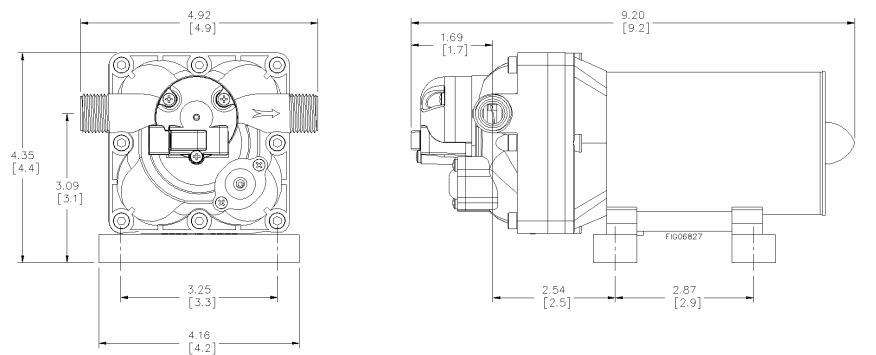
7.6 LPM 2060R Pump:



11.4 LPM 3055R Pump:



18.9 LPM 5055R Pump:



*Specifications subject to change without notice.