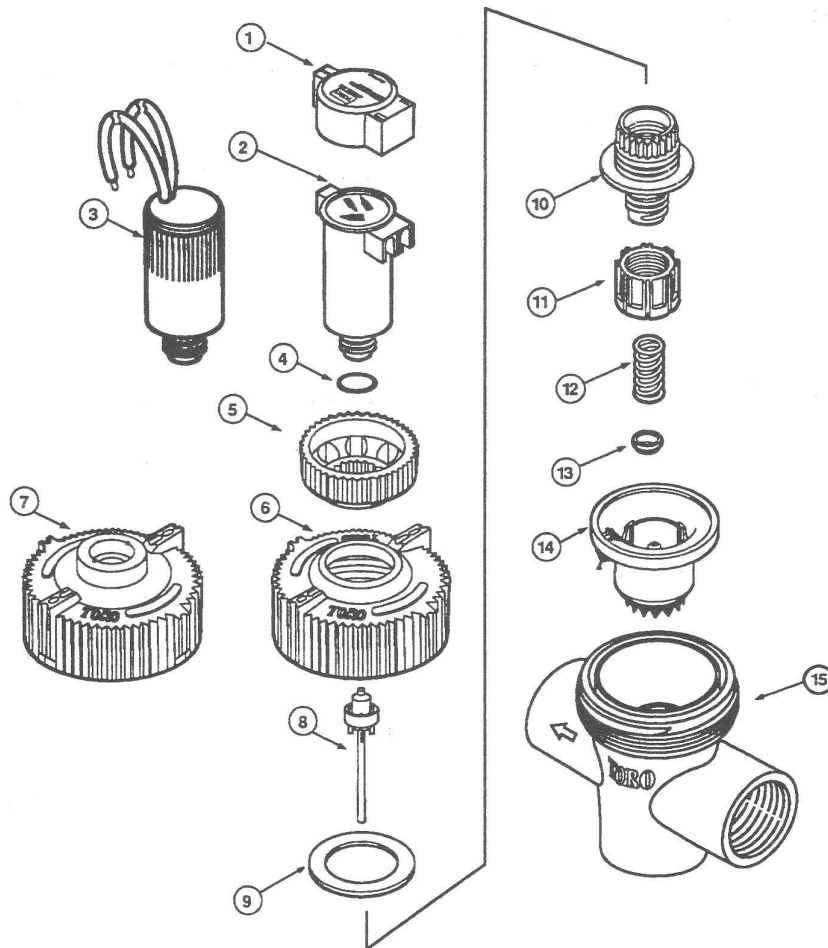


**Figure 8 Flo-Pro Series, 1 Inch Globe**



Item No.	Part No.	Nomenclature	Quantity Per Assy.
1	89-0880	Cap, Solenoid	1
2	89-0889	Solenoid Assy. w/o Wires	1
3	89-0114	Solenoid Assy. with Wires	1
4	363-3138	O-Ring, 1/6 in. x 5/8 in. i.d.	1
5	35-8292	Knob (Flow Control Models)	1
6	35-8289	Cap (Flow Control Models)	1
7	35-8193	Cap (w/o Flow Control)	1
8	89-0069	Seat Assy., Discharge	1
9	89-1155	Washer, Teflon (Flow Control Models)	1
10	89-0142	Stem Assy. (Includes Item 11 and O-Ring, Flow Control Models)	1
11	35-8294	Nut (Flow Control Models)	1
12	89-2042	Spring, Diaphragm	1
13	89-3423	Bearing, Spring Sleeve (Flow Control Models)	1
14	89-0993	Diaphragm Assy. (Includes Red Debris Arrester)	1
15	89-0117	Body Assy., 1 in., F x F x F NPT	1
15	89-0118	Body Assy., 1 in., F x F x F BSP	1
		<b>SERVICE PARTS AND ASSEMBLIES</b>	
	89-4104	Drip Kit, Flow Control (Includes Items 9, 11 and 12)	

© 1994 THE TORO COMPANY  
 Irrigation Division  
 P.O. Box 489  
 Riverside, California 92502  
 Printed in U.S.A.

PRINTING DATE  
 MARCH 1994 REV. B  
 SUPERSEDES OCTOBER 1991

FORM NO.  
 367-0054