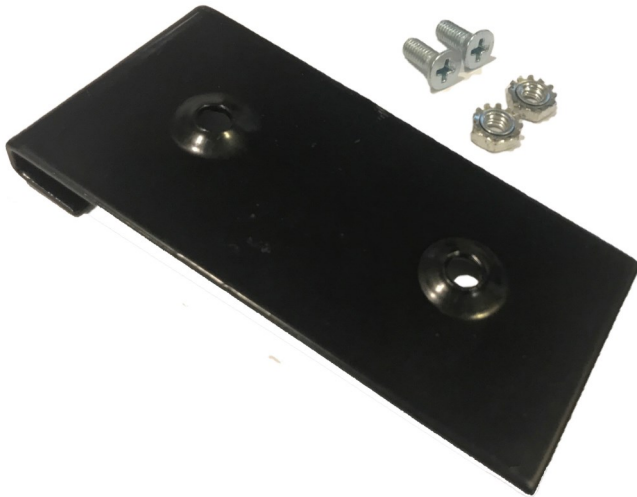


# GRID WALL PLATE

Model # 31-5581



## PARTS LIST

Qty	Name
1	Grid Wall Plate
2	Phillips Head Bolt
2	Serrated Nut

## Assembly

1. Turn your Suspenz Paddle Rack upside down with the back of the mounting plate facing upwards taking note of which end has the Suspenz logo facing up.
2. Set the Grid Wall Plate on the mounting plate of your Paddle Rack, nestling the counter sinks into the divots on the back of your Paddle Rack. (The "hook" part of your Grid Wall Plate should be facing outward).
3. Insert Bolts into back of Grid Wall Plate and through Paddle Rack and secure on front of Paddle Rack with Serrated Nut. Tighten Nut.



Rev. 11/18

FOR TECHNICAL ASSISTANCE OR REPLACEMENT PARTS: CALL 866.787.7369

## OUR PLEDGE TO YOU

Suspenz® products are warranted for life against defects in material or workmanship to the original owner. Product must be used for its intended purpose under normal conditions. Please visit [www.Suspenz.com](http://www.Suspenz.com) for complete warranty information.

SUSPENZ®, INC.  
8725 ROSWELL ROAD #0-220  
ATLANTA GA 30350



CUSTOMER SERVICE: 770-518-0045  
FAX: 770-518-8507  
WEBSITE: [WWW.SUSPENZ.COM](http://WWW.SUSPENZ.COM)