

The model +501 differs from the other chairs in the Höganäs plus-series. With a specially designed back with an edge of cold foam which is then filled with soft polyether, the chair is experienced as very soft and comfortable.

\* +501 replaces +502 as of 1/03/2023



Design: Sten Engdal

## FACTS HÖGANÄS +501

### MEASUREMENT

Back width	420 mm
Back height	530 mm
Seat width	460 mm
Seat depth	490 mm
Seat height	400-530 mm

### FABRIC REQUIRED

Fabric width	1400 mm = 1200 mm
Fabric width	1500 mm = 1200 mm



PERFORMANCE	ART.NO	PG. 45	PG. 46	PG. 04	PG. 30
Basic price	150111XX	1190 €	1213 €	1280 €	1751 €
prices are excluding 21% VAT					

! INFO! The basic price includes gas lift, black base including castors for hard floors.

The controls have changed their appearance during 2021. See the new Höganäs + 3 series.

ACCESSORIES - Neck rest cannot be ordered on this chair afterwards. If you would like to be able to order a headrest at a later date, order a chair "prepared for neck rest", look under accessories Höganäs.

👉 PRICE GROUPS FABRIC (XX)

45 = Economy  
46 = Standard

04 = Designers Collection  
30 = Leather

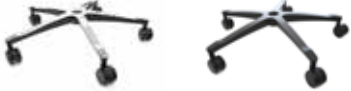
🔍 For a complete list of the fabrics included in the different price groups, see the end of the price list. Choose fabric/colour number on the fabric supplier's website. Specify fabric choice/colour when ordering.

# ACCESSORIES HÖGANÄS

All prices are excluding 21% VAT

SEATING | PREMIUM

## PRICE ACCESSORIES

			NEW ORDER	SPARE PART
PERFORMANCE		ART.NO	PRICE	PRICE
	Base, black powder-coated aluminium	4503	Standard	114 €
	Base, polished aluminium	5504	59 €	162 €



PERFORMANCE	ART.NO	PRICE	PRICE
Foot ring in adjustable height	6801	78 €	78 €



PERFORMANCE	ART.NO	PRICE	PRICE
Gas lift 400–530 mm	4411	Standard	113 €
Gas lift 480–640 mm, black, typ 2	4401	21 €	134 €
Gas lift 510–710 mm, black, typ 3	5402	28 €	141 €
Gas lift telescope 490–710 mm, black	9277	38 €	152 €



PERFORMANCE	ART.NO	PRICE	PRICE
Leather neck rest	62010130	230 €	230 €
Artificial leather/fabric neck rest	620101XX	165 €	165 €
Neck rest +4, extended holder	620111XX	165 €	165 €



PERFORMANCE	ANTAL	ART.NO	PRICE	PRICE
Black castors, 65 mm (1)	5 pcs	5607	Standard	37 €
Interval breaking castors, 65 mm (2)	5 pcs	5609	20 €	37 €
Load braked castors, 65 mm (3)	5 pcs	5610	33 €	53 €
Glides (4)	5 pcs	9003	20 €	37 €



PERFORMANCE	ART.NO	PRICE	PRICE
Back-up, lumbar support pump	6100	65 €	65 €
Extended seat 20 mm	300001	19 €	19 €
Prepared for neck rest	6209	43 €	43 €



PERFORMANCE	ART.NO	PRICE	PRICE
Höganäs+ armrest	ARS BOCK	165 €	165 €

## STANDARD COLLECTION (STD/46)

### SUMI

FABRIC NAME: Camira  
 MATERIAL: 90% Wool | 10% Polyamid  
 DURABILITY : 100 000  
 FULFILLS MÖBELFAKTA REQUIREMENTS

### AQUARIUS

FABRIC NAME: Camira  
 MATERIAL: 100% Wool  
 DURABILITY : 50 000  
 FULFILLS MÖBELFAKTA REQUIREMENTS

### XTREME

FABRIC NAME: Camira  
 MATERIAL: 100% recycled Polyester  
 DURABILITY : 100 000  
 FULFILLS MÖBELFAKTA REQUIREMENTS

### GAJA CLASSIC

FABRIC NAME: Gabriel  
 MATERIAL: 100% Wool  
 DURABILITY : 200 000  
 FULFILLS MÖBELFAKTA REQUIREMENTS

### FAME

FABRIC NAME: Gabriel  
 MATERIAL: 95% Wool | 5% Polyamid  
 DURABILITY : 50 000  
 FULFILLS MÖBELFAKTA REQUIREMENTS

### MEDLEY

FABRIC NAME: Gabriel  
 MATERIAL: 100% Polyester  
 DURABILITY : 70 000  
 FULFILLS MÖBELFAKTA REQUIREMENTS

### SELECT

FABRIC NAME: Gabriel  
 MATERIAL: 85% Wool | 15% Polyamid  
 DURABILITY : 200 000  
 FULFILLS MÖBELFAKTA REQUIREMENTS

### STEP MELANGE

FABRIC NAME: Gabriel  
 MATERIAL: 100% Trevira CS  
 DURABILITY : 100 000  
 FULFILLS MÖBELFAKTA REQUIREMENTS

### CURA

FABRIC NAME: Gabriel  
 MATERIAL: 98% recycled Polyester, 2% Polyester  
 DURABILITY : 100 000  
 FULFILLS MÖBELFAKTA REQUIREMENTS

### PUXX NR 1

FABRIC NAME: Jörgensen  
 MATERIAL: Polyuretan artificial leather  
 DURABILITY : 90 000  
 FULFILLS MÖBELFAKTA REQUIREMENTS

### FURKA PLUS

FABRIC NAME: Vescom  
 MATERIAL: Vinyl surface | Cotton | Polyester  
 DURABILITY: 125 000  
 FULFILLS MÖBELFAKTA REQUIREMENTS

### SAMAR

FABRIC NAME: Vescom  
 MATERIAL: 100% Trevira CS  
 DURABILITY: 50 000  
 FULFILLS MÖBELFAKTA REQUIREMENTS

### ROCK CS

FABRIC NAME: Nevotex  
 MATERIAL: 100% Trevira CS  
 DURABILITY: 70 000  
 FULFILLS MÖBELFAKTA REQUIREMENTS

### ILLUSION FG BLACK

FABRIC NAME: Nevotex  
 MATERIAL: 69% PU | 31% Cotton  
 DURABILITY: 500 000  
 FULFILLS MÖBELFAKTA REQUIREMENTS

## ECONOMY COLLECTION (ECO/45)

### EVENT

FABRIC NAME: Gabriel  
 MATERIAL: 100% Polyester  
 DURABILITY : 100 000  
 FULFILLS MÖBELFAKTA REQUIREMENTS

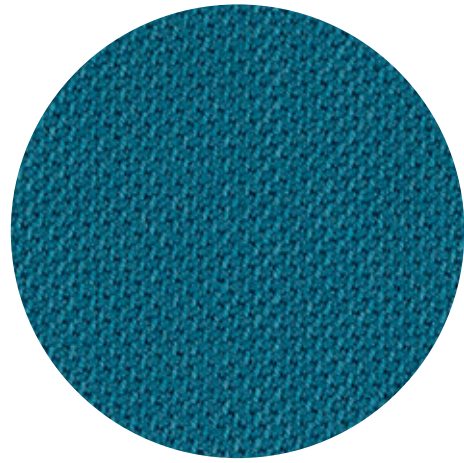
## LEATHER (SKI/30)

### ELMOSOFT\*

FABRIC NAME: Elmo  
 MATERIAL: Leather  
 FULFILLS MÖBELFAKTA REQUIREMENTS

\* The price refers to black.

At other colour choiches, 353 € /chair will be added.



**SELECT™**

---

by Gabriel



60131



60005



62097



60139



61188



62098



60003



60129



62100



60134



60130



61184



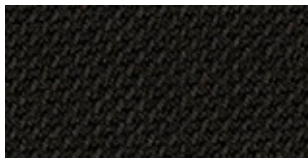
60051



60132



61189



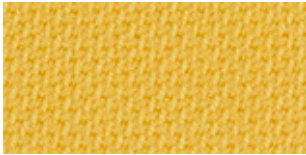
60999



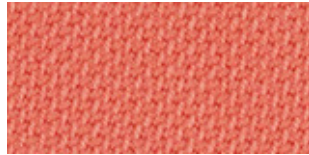
60133



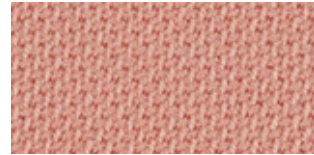
61187



62103



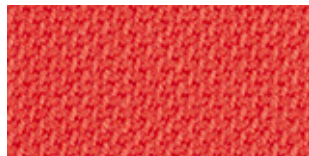
64214



64213



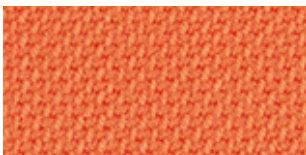
62099



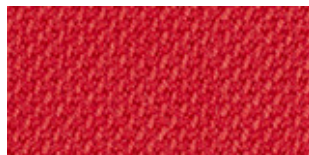
64215



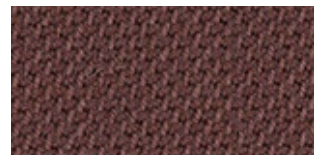
65117



63101



64216



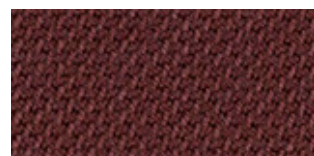
61185



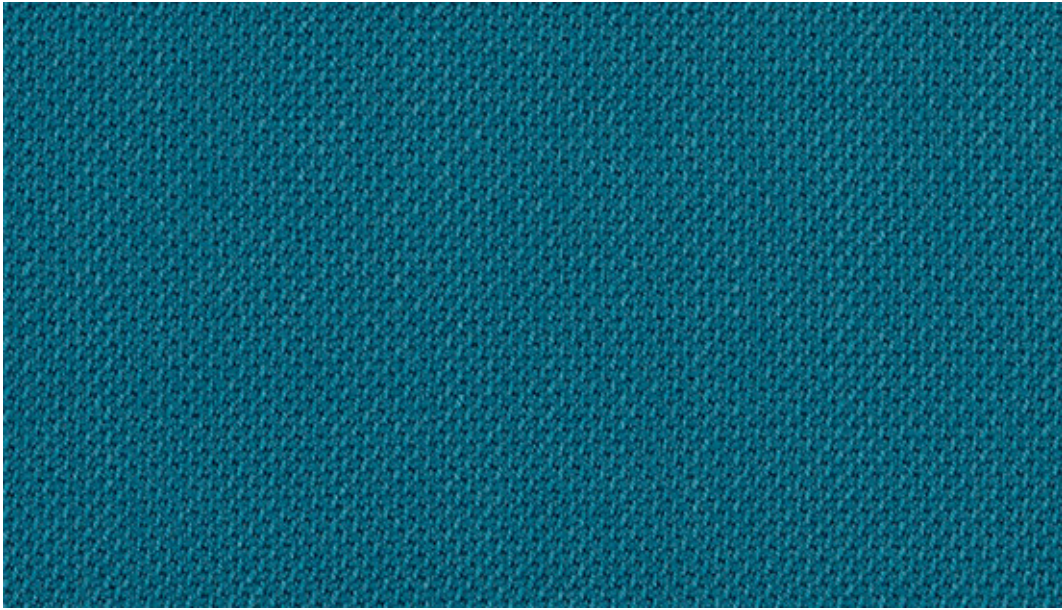
63102



64089



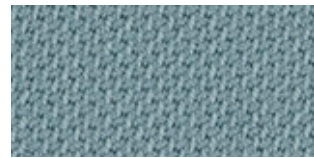
61186



66192



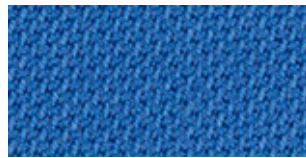
65114



67098



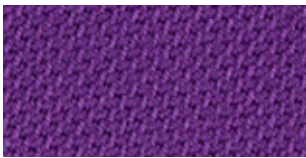
61190



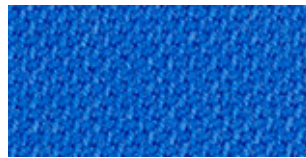
66190



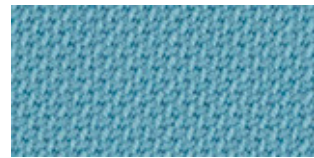
67097



65116



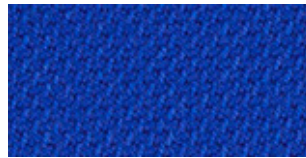
66189



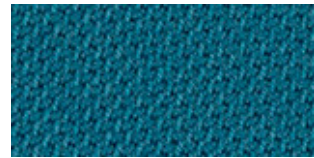
66191



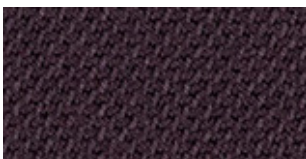
65077



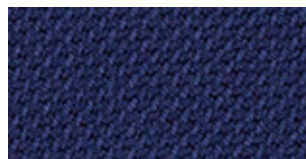
66075



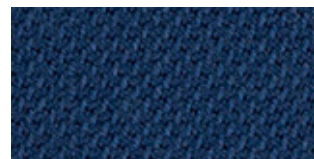
66192



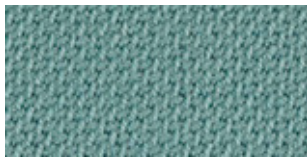
65115



66005



66071



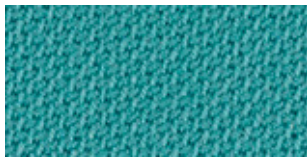
67101



68210



62104



67100



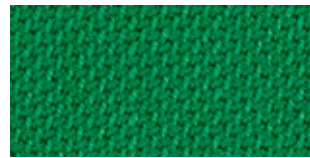
67094



67093



66193



68211



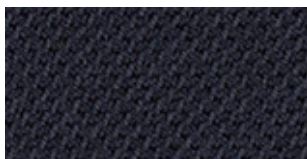
66194



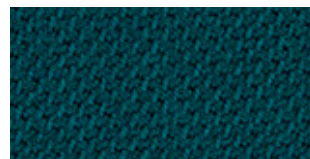
67096



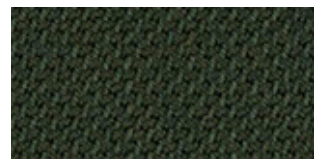
67095



66144



67099



68209



# SELECT™

---

Select specifications: [www.gabriel.dk](http://www.gabriel.dk)

Please be aware that the PDF colour shades can appear different from the real fabric colours.  
We advise you to request actual fabric samples before ordering.

# FABRICS

## MATERIAL | FABRICS

### DESIGNERS COLLECTION (DC/04)

#### 24/7

FABRIC NAME:

MATERIAL: 50% Polyamide | 33% Wool |  
10% Visil | 7% Viscose

DURABILITY : 50 000

FULFILLS MÖBELFAKTA REQUIREMENTS

#### MAIN LINE FLAX

FABRIC NAME: Camira

MATERIAL: 70% Wool | 30% Linne

DURABILITY : 50 000

FULFILLS MÖBELFAKTA REQUIREMENTS

#### CRISP

FABRIC NAME: Gabriel

MATERIAL: 93% Wool | 7% Polyamide

DURABILITY : 200 000

FULFILLS MÖBELFAKTA REQUIREMENTS

#### PASSION

FABRIC NAME: Gabriel

MATERIAL: 91% Wool from New Zealand |  
9% Polyamid

DURABILITY : 200 000

FULFILLS MÖBELFAKTA REQUIREMENTS

#### ATHLON PLUS

FABRIC NAME: Gabriel

MATERIAL: 100% Polyester

DURABILITY : 100 000

FULFILLS MÖBELFAKTA REQUIREMENTS

#### BREEZE FUSION

FABRIC NAME: Gabriel

MATERIAL: 88% Wool | 12% Polyamid

DURABILITY : 100 000

FULFILLS MÖBELFAKTA REQUIREMENTS

#### CAPTURE

FABRIC NAME: Gabriel

MATERIAL: 85% Wool | 15% Polyamid

DURABILITY : 200 000

FULFILLS MÖBELFAKTA REQUIREMENTS

#### REMIX 3

FABRIC NAME: Kvadrat

MATERIAL: 90% Ull | 10% Nylon

DURABILITY: 100 000

FULFILLS MÖBELFAKTA REQUIREMENTS

#### STEELCUT TRIO 3

FABRIC NAME: Kvadrat

MATERIAL: 90% Ull | 10% Nylon

DURABILITY: 100 000

FULFILLS MÖBELFAKTA REQUIREMENTS

#### HALLINGDAL 65

FABRIC NAME: Kvadrat

MATERIAL: 70% Ull | 30% Nylon

DURABILITY: 100 000

FULFILLS MÖBELFAKTA REQUIREMENTS

#### ILLUSION\*

FABRIC NAME: Nevotex

MATERIAL: 69% PU | 31% Cotton

DURABILITY: 500 000

FULFILLS MÖBELFAKTA REQUIREMENTS

*\*Applies only to all colors except black*