
Tacoma 2016+ (Generation 3) Mud Flap Installation

(Rear & Front)

INCLUDES:

- (2) Rear Flaps
- (6) Short Self Tapping Screws
- (2) Long Self Tapping Screws
- (10) Washers
- (2) Spacers

- (2) Front Flaps
- (4) Short Self Tapping Screws
- (2) Long Self Tapping Screws
- (8) Washers
- (2) Spacers



Rear Mud Flap Installation Instructions

Important: It is recommended to read through all instructions prior to starting install

1. Remove Factory screws (see fig. 1 & 2 for location)
2. Start by attaching Long Self Tapping Screw, 2 washers and spacer to flap (figure 3).
3. Fasten to factory hole in wheel well (figure 2) using a 3/8" socket or combination wrench. Do not tighten completely until all locations are fastened and alignment is checked.
4. Attach 3 short self-tapping screws with washer to remaining 3 factory holes (figure 4). Leave loose for adjustment.
5. Adjust as needed to ensure flap is aligned vertically and horizontally to your preference. Tighten all 4 screws. (NOTE: Do not overtighten Long screw to prevent over compressing rubber spacer)
6. Repeat above steps for opposite side.

FIGURE 1



FIGURE 2

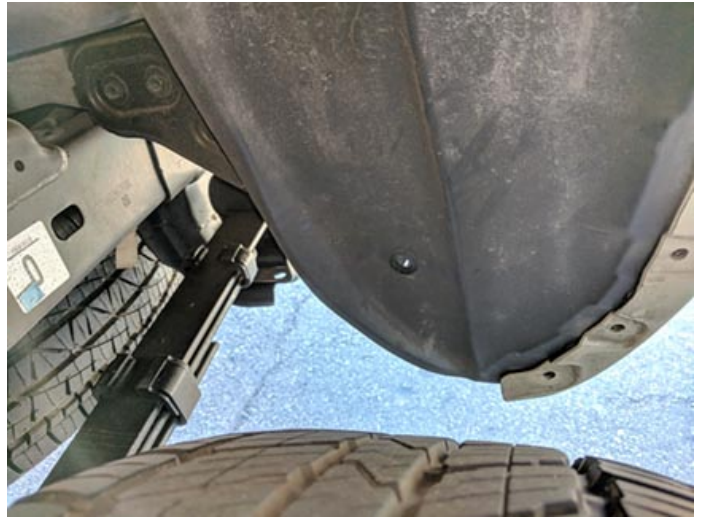


FIGURE 3



FIGURE 4



Front Mud Flap Installation Instructions

Important: It is recommended to read through all instructions prior to starting install

NOTE: TURNING FRONT WHEELS IS RECOMMENDED TO ALLOW ACCESS FOR INSTALLATION

1. Remove Factory screws (see fig. 5 for location)
2. Start by attaching Long Self Tapping Screw, 2 washers and spacer to flap.
3. Fasten to factory hole in wheel well (figure 5) using a 3/8" socket or combination wrench. Do not tighten completely until all locations are fastened and alignment is checked.
4. Attach 2 short self-tapping screws with washer to remaining 2 factory holes (figure 6). Leave loose for adjustment.
5. Adjust as needed to ensure flap is aligned vertically and horizontally to your preference. Tighten all 3 screws. (NOTE: Do not overtighten Long screw to prevent over compressing rubber spacer)
6. Repeat above steps for opposite side.

FIGURE 5



FIGURE 6

