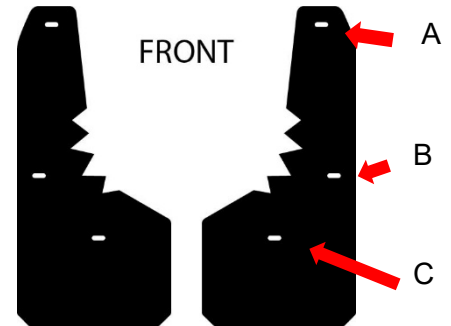


Ford Raptor 2021+

Mud Flap Installation Instructions

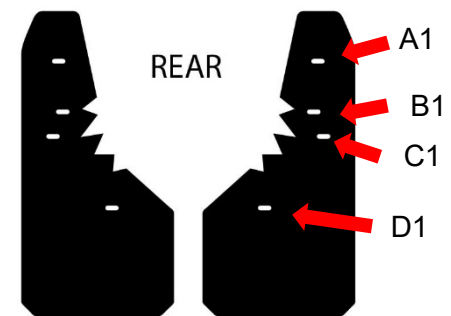
FRONT HARDWARE

QTY	DESCRIPTION
2	#8 X 1-1/2" HEX SCREWS (C)
4	LARGE FENDER WASHERS (1/4" X 1-1/4")
2	SMALL FENDER WASHERS (3/16" X 1")



REAR HARDWARE

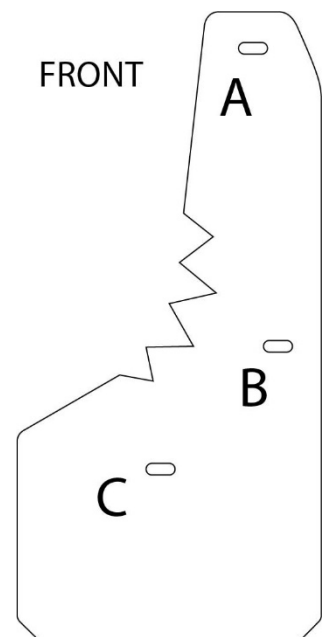
QTY	DESCRIPTION
2	CLAMP BRACKET (A1 & B1)
4	LOCK WASHERS
4	1/4" -20 NUTS
4	LARGE FENDER WASHERS
4	#8 X 1-1/2"
4	SMALL FENDER WASHERS



Front Mud flap Installation

NOTE: For easier access to front fender wells we recommend turning wheels toward side you are working on

1. Remove Factory screws on fender well lip at Locations A & B (save for re-use). (FIGURE 1)
2. Begin Installation by aligning 2 outer holes in flap (holes A & B) over 2 factory holes. Fasten loosely with factory screws and supplied fender washers.
3. Attach flap at location C using supplied #8 X 1-1/2" screw and small fender washer. (FIGURE 2)
4. Adjust as needed to ensure flap is aligned vertically and horizontally to your preference.
5. Tighten all fasteners & repeat above steps for opposite side



Rear Mud Flap Installation

1. Remove Factory screws on fender well lip at locations C1 & D1 and save for re-use. (FIGURE 4)
2. Place Mud flap over 2 factory holes C1 & D1. Fasten loosely with saved factory screws & washers + supplied large fender washers. (FIGURE 4)
3. Next pull back flap at top and slide Clamp Bracket (FIGURE 3 & 4) on to fender well lip with threaded studs facing out. Align studs with slots A1 & B1. (Note: make sure bracket is pushed all the way on to lip when securing with washers and nuts.)
4. Place Fender Washer, Lock washer and nut over threaded studs and tighten just enough to secure flap to bracket. (FIGURE 4) Adjust as needed to ensure flap is aligned vertically and horizontally to your preference.
5. Tighten all fasteners & repeat above steps for opposite side

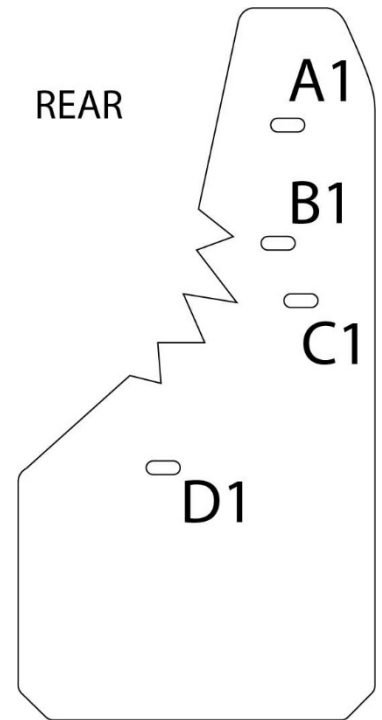


FIGURE 1 (FRONT)

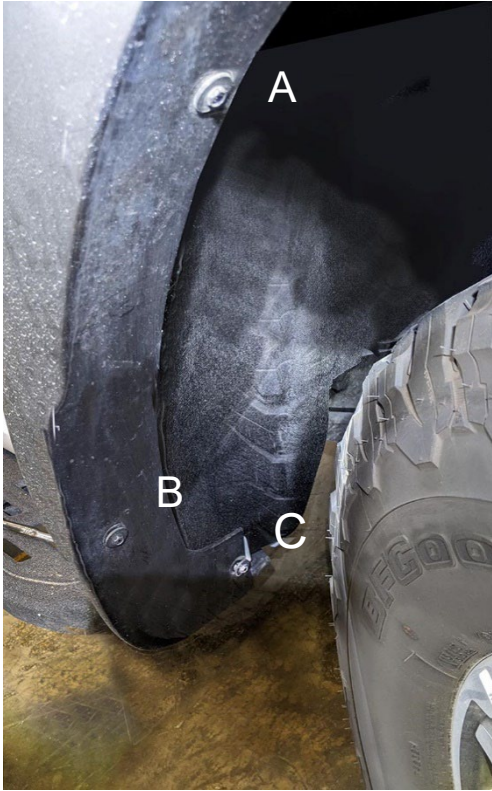


FIGURE 2 (FRONT)

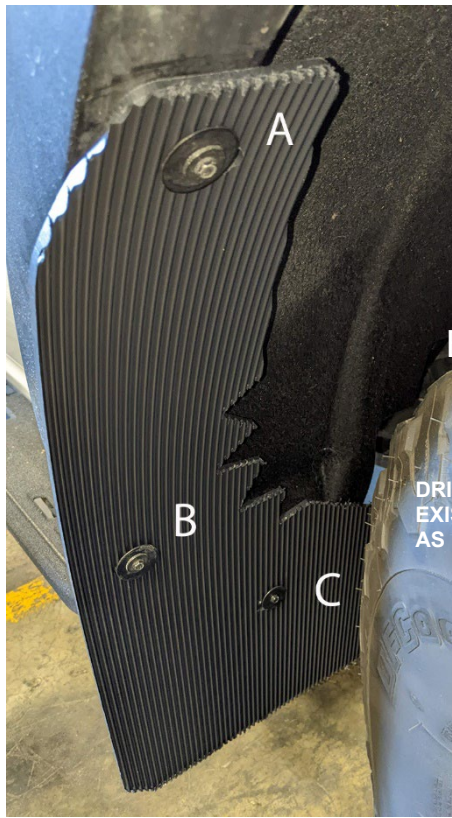
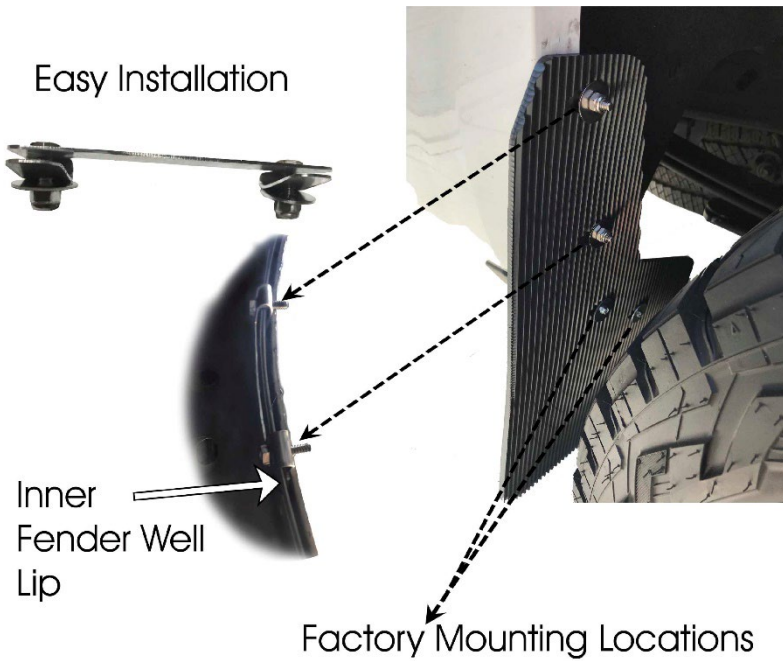


FIGURE 3



REK GEN
No Drill Clamping Bracket

FIGURE 4 (REAR)

