



Ford F-250,350 2020+ Mud Guards

Installation Instructions*

*Professional installation is recommended

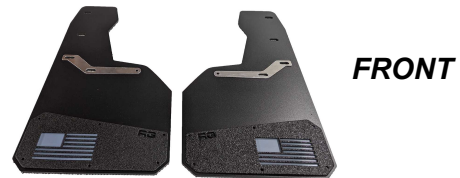
CONTENTS: *Front &/or Rear F-250 REKGEN MUD GUARDS+ HARDWARE*

FRONT HARDWARE:

2-Clamp Brackets (4- Lrg Washers, 4-Lock Washers,
4-Nuts)
4-#8 Hex Screws
4-Small Washers

REAR HARDWARE:

2-Clamp Brackets (4-Lrg Washers, 4-Lock Washers,
4-Nuts)
4-1/4-20 Bolts
4-Metal U-Clips
4-Lrg Washers (8 Total)



Before beginning installation:

1. Read through assembly procedure before starting installation
2. Have necessary tools for installation
3. Make sure location for installation is clean and flat
4. Use of safety glasses & gloves is recommended
5. Verify contents of hardware packages from lists above

NOTE: VEHICLES WITH FENDER FLARES MAY REQUIRE HOLES DRILLED INTO FLARES TO EXPOSE FACTORY HOLES FOR PROPER FASTENING).

Front Installation

1. Turn front wheels to facilitate installation of Mud Guard and Fasteners
2. Remove factory screws (using 7/32" socket or wrench) to expose factory mounting holes. (See Figure 2)
3. Fasten Flap to exposed factory holes using #8 hex screws and small washers at locations C & D. NOTE: Do not fully tighten until Clamp Bracket is installed and alignment complete
4. Next, with bottom of flap fastened loosely, pull top of flap away from fender well and place clamp bracket on fender well lip to align with 2 top holes in flap (LOCATIONS A & B) with 2 studs on clamp bracket (FIGURE 7). Once aligned place fender washers, lock washers & nuts onto studs and tighten to allow bracket to clamp onto lip. DO NOT OVERTIGHTEN as this may result in cross threading nut.
5. Adjust alignment of flap and tighten all fasteners.
REPEAT ABOVE STEPS ON OPPOSITE SIDE

Rear Installation

1. Remove factory push clips (plastic) from bottom fender well lip with removal tool, pliers and/or slotted screwdriver. (SEE FIGURE 5)
2. Pull away plastic trim & place provided U Clips over factory holes in 2 locations along bottom of fender well lip(SEE FIGURE 6). NOTE: VEHICLES WITH FENDER FLARES MAY REQUIRE HOLES DRILLED INTO FLARES TO EXPOSE FACTORY HOLES FOR PROPER FASTENING).
3. Place flap on to fender well making sure bottom holes in flap (C & D) align with U Clips in factory locations.
4. Fasten with ¼-20 bolts and washers.
5. Next, with bottom of flap fastened loosely, pull top of flap away from fender well and place clamp bracket on fender well lip to align 2 top holes in flap (LOCATIONS A & B) with 2 studs on clamp bracket (SEE FIGURE 7). Once aligned place fender washers and locknuts onto studs and tighten to allow bracket to clamp onto lip.
6. Adjust alignment of flap and tighten all fasteners.

REPEAT ABOVE STEPS ON OPPOSITE SIDE

FIGURE 1

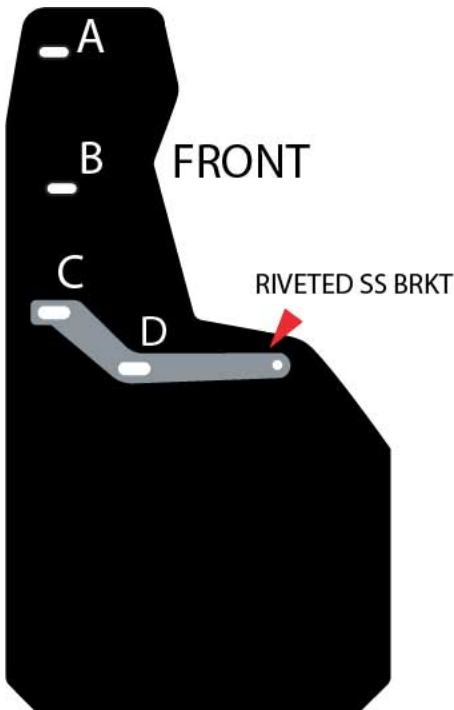


FIGURE 2



FIGURE 3



FIGURE 4

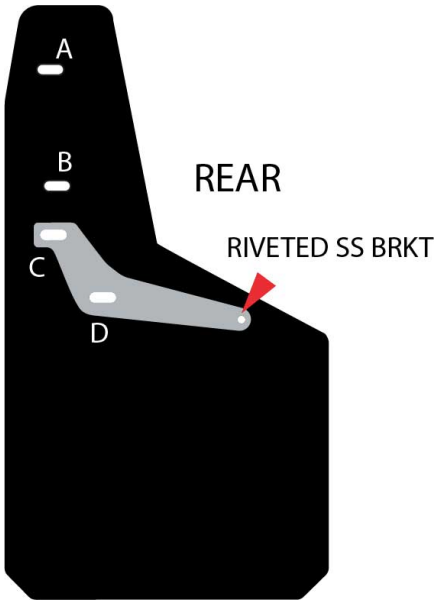


FIGURE 5



FIGURE 6



FIGURE 7

