

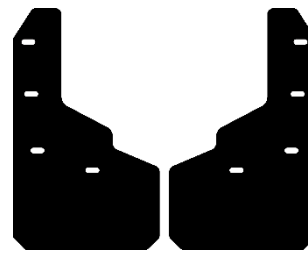
2015+ Chevy Colorado/GMC Canyon Mud Flap Installation Instructions

NOTE: This product does not fit with fender flares or Chevy Colorado ZR2 2017+

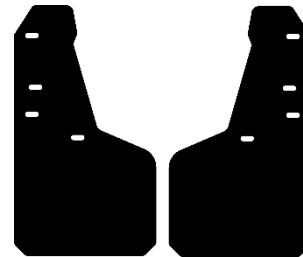
INCLUDES:

| | |
|-----|--------------------|
| (2) | <u>Front Flaps</u> |
| (2) | Clamp Brackets |
| (4) | Lock nuts |
| (4) | Large washers |
| (4) | 1-3/4" Long Screws |
| (6) | SS Washers |
| (2) | 1/2" Spacers |

| | |
|-----|--------------------|
| (2) | <u>Rear Flaps</u> |
| (2) | Clamp Brackets |
| (4) | Lock nuts |
| (4) | Large washers |
| (4) | 1-3/4" Long Screws |
| (4) | SS Washers |



FRONT



REAR

Tools Required:

7/16" Socket Wrench or open-end wrench / Phillips head screwdriver / Level

Front Mud Flap Installation Instructions

Important: It is recommended to read through all instructions prior to starting install

NOTE: TURNING FRONT WHEELS IS RECOMMENDED TO ALLOW ACCESS FOR INSTALLATION

1. Remove Factory screws
2. Start by placing Clamp Bracket on the upper portion of fender well lip so that it can be adjusted up or down (FIGURE 2).
3. Next attach flap to factory holes in fender well at locations A & B with 1-3/4" screws and washers (Note: spacer + 2 washers is needed at point A only – See FIGURE 1). Do not tighten completely to allow for adjustment.
4. Next pull back top portion of flap to align clamp bracket studs with top 2 slots in flap. Secure flap to bracket with black washers and lock nuts Do not tighten completely to allow for adjustment.
5. Adjust as needed to ensure flap is aligned vertically and horizontally to your preference. Tighten all fasteners. (FIGURE 3)
6. Repeat above steps for opposite side.

FIGURE 1

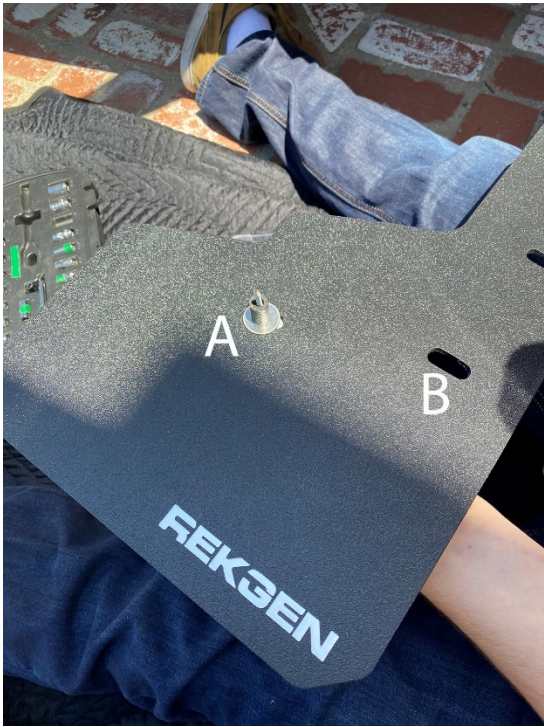


FIGURE 2

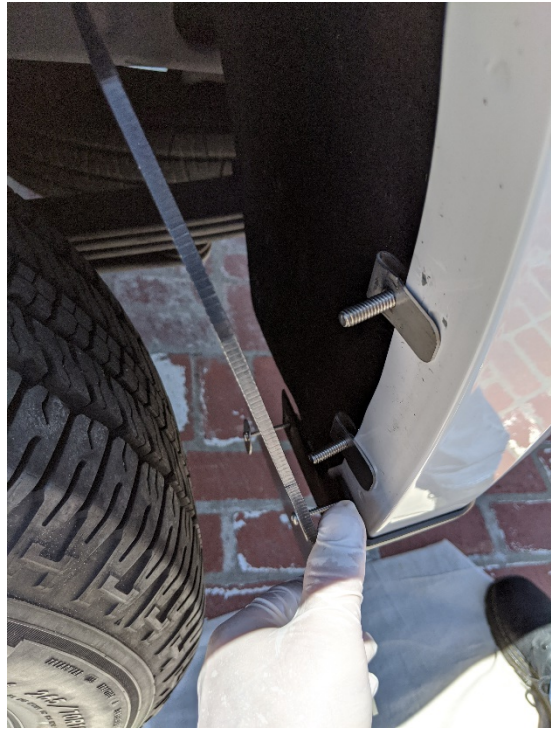
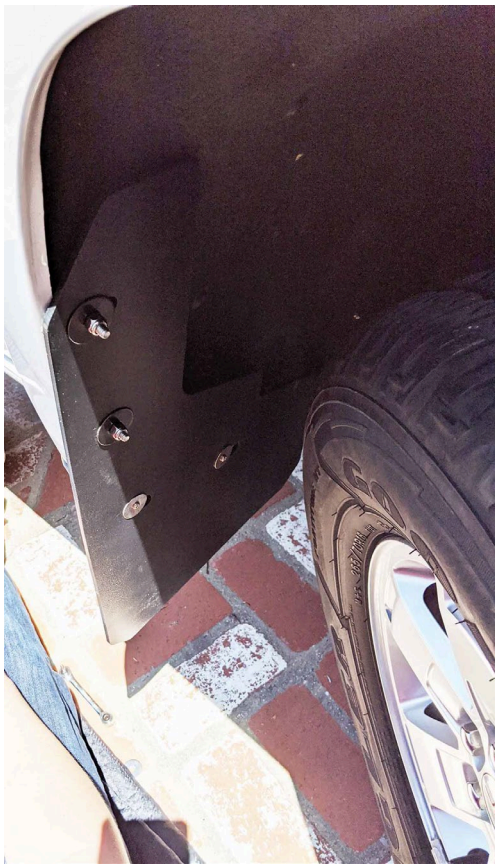
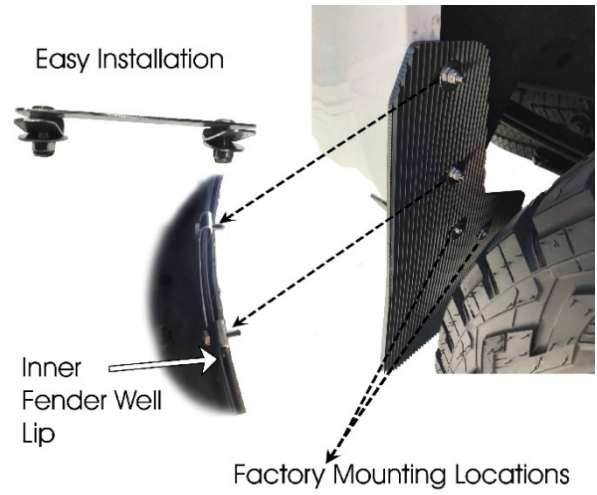


FIGURE 3



CLAMP BRACKET DIAGRAM



REK GEN
No Drill Clamping Bracket

Rear Flap Installation Instructions

Important: It is recommended to read through all instructions prior to starting install

7. Remove Factory screws
8. Start by placing Clamp Bracket on the upper portion of fender well lip so that it can be adjusted up or down (FIGURE 4) .
9. Next attach flap to factory holes in fender well at locations A & B with 1-3/4" screws and washers. Do not tighten completely to allow for adjustment.
10. Next pull back top portion of flap to align clamp bracket studs with top 2 slots in flap. Secure flap to bracket with black washers and lock nuts Do not tighten completely to allow for adjustment. (FIGURE 5)
11. Adjust as needed to ensure flap is aligned vertically and horizontally to your preference. Tighten all fasteners. (FIGURE 6)
12. Repeat above steps for opposite side.

FIGURE 4



FIGURE 5



FIGURE 6

