

# Rek Gen Mud Flaps to fit Subaru Crosstrek 2013-2017 – Front & Rear

## FRONT HARDWARE

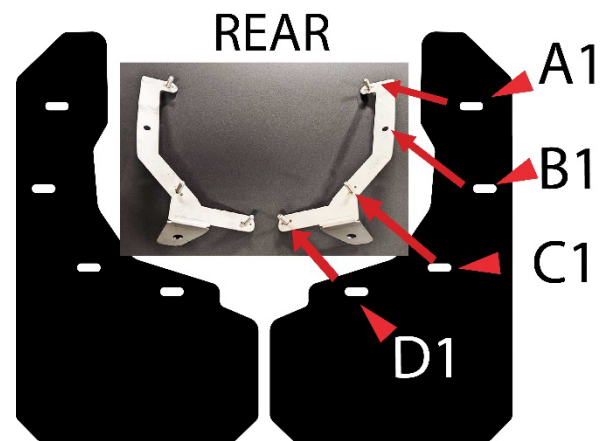
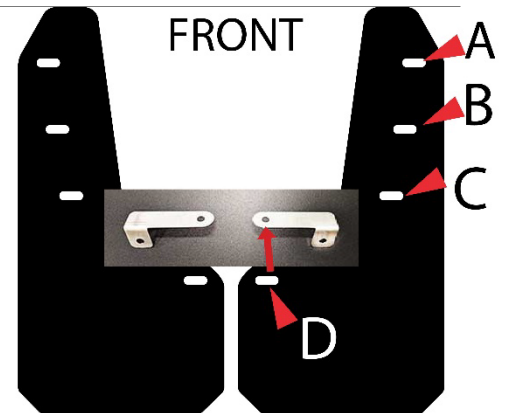
2	L Type Brackets
2	#14 X 1-1/2" Button Head Tapping Screws
2	Spacers (small)
4	#14 X 1" Hex Head Tapping Screws
8	1/4" Fender Washers
6	Plastic U-Clips
2	Small Washers
4	M5 Hex Bolts

## REAR HARDWARE

2	Rear Brackets w/ studs
2	Plastic Push Retainers
2	#5 x 25mm bolts
8	1/4" Fender Washers
6	1/4" Locknuts

## Front Mud Flap Installation

**Tools needed:** (1) *Philips head compact screwdriver* (2) *Ratchet w/ 5/16", 3/8" & 7/16" Sockets* (3) *Level*



**NOTE: Turning front wheels is recommended for easier access to fender well**

1. Remove Factory Push Clip (FIGURE 1 – A) from fender well liner at using a flat head screwdriver and pliers. Also remove Factory Push Clip from undercarriage (Location D)
2. Remove Factory M5 hex bolts at locations B & C (Figure 1 )
3. Next pull liner back to expose attachment locations A, B, & C and undercarriage fastening location D. (SEE FIGURE 2)
4. Slide plastic U-Clip over tab at location A with flat side of clip facing tire. At location D slide plastic U-Clip over existing factory hole with flat side facing down. (FIGURE 2). (NOTE: Factory threaded clips at Locations B & C to remain for mounting flap using supplied M5 hex bolts.)
5. Attach L type bracket at undercarriage Using #14 X 1-1/2" screw, spacer & small washer into plastic U-Clip previously installed. Note: Prior to attaching L type bracket slide plastic U-Clip over hole at long end of L-type bracket with flat side facing tire. This bracket serves as an attachment for inside of flap at location D.(FIGURE 4 & 5)
6. Begin installing flap by fastening flap at location A using #14 x 1" tapping screw and large washer through plastic U-Clip. Next fasten at location B & C using M5 Hex bolts and large washers.
7. Fasten at Inside location D using #14 tapping screw and large washer through Plastic U-Clip. Align flaps as desired and tighten all fasteners (FIGURE 6). REPEAT ABOVE STEPS ON OPPOSITE SIDE.

FIGURE 1



FIGURE 2



FIGURE 3

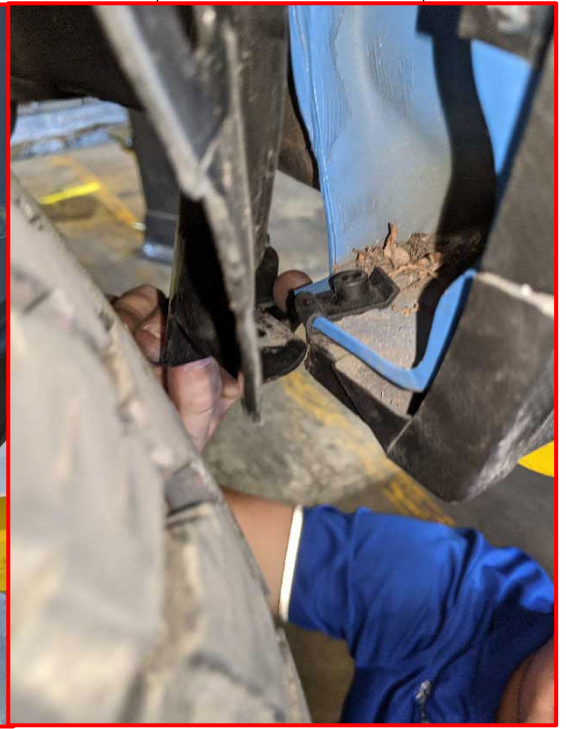


FIGURE 4

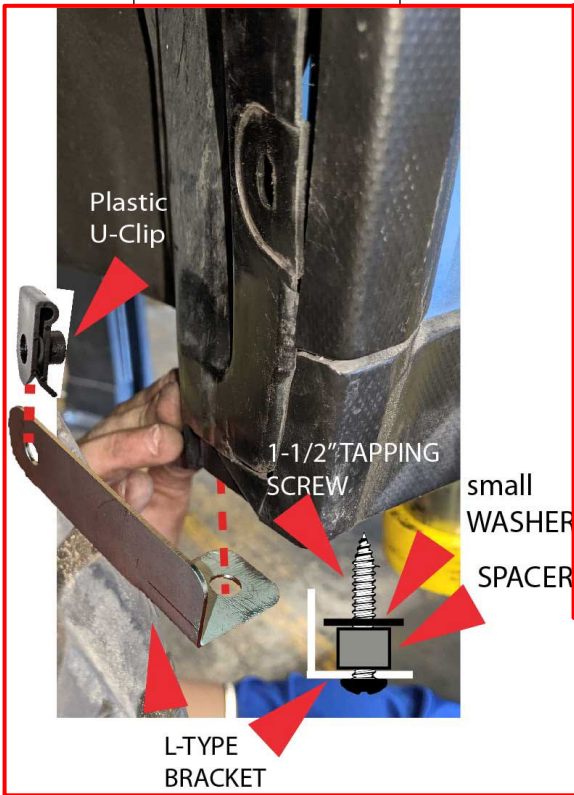
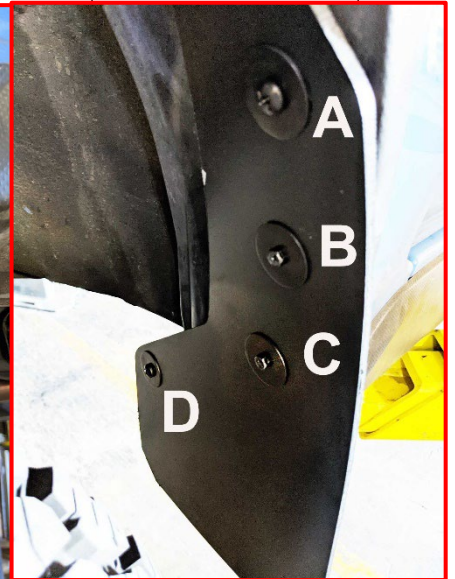


FIGURE 5



FIGURE 6





## Rear Mud Flap Installation

1. Remove factory plastic insert from undercarriage (FIGURE 7) & Remove factory Hex bolt at location B1 on fender well. (FIGURE 8).
2. Fasten bracket to fender well at B1 location using factory hex bolt removed in Step 1 or use provided M5 hex bolts included in hardware kit. (FIGURE 9)
3. Next fasten lower part of bracket to undercarriage using included push inserts. (FIGURE 10)
4. Once bracket is secured to fender well begin fastening flap to bracket on fender well by aligning slots in flap with studs on bracket. Fasten to studs using large washers and locknuts.
5. Using a level, align flaps as desired and tighten all fasteners.
6. REPEAT ABOVE STEPS ON OPPOSITE SIDE.

FIGURE 7



FIGURE 8

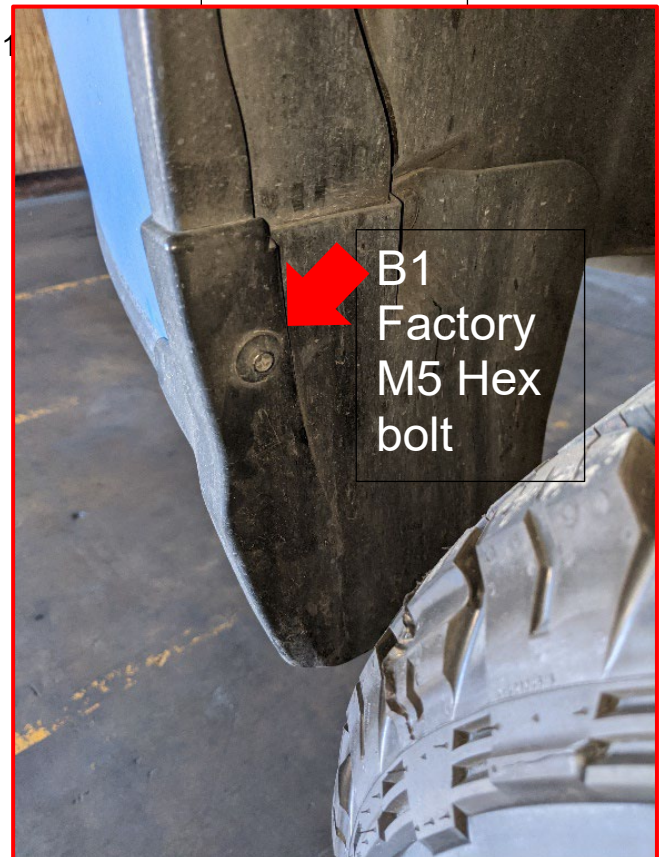




FIGURE 9

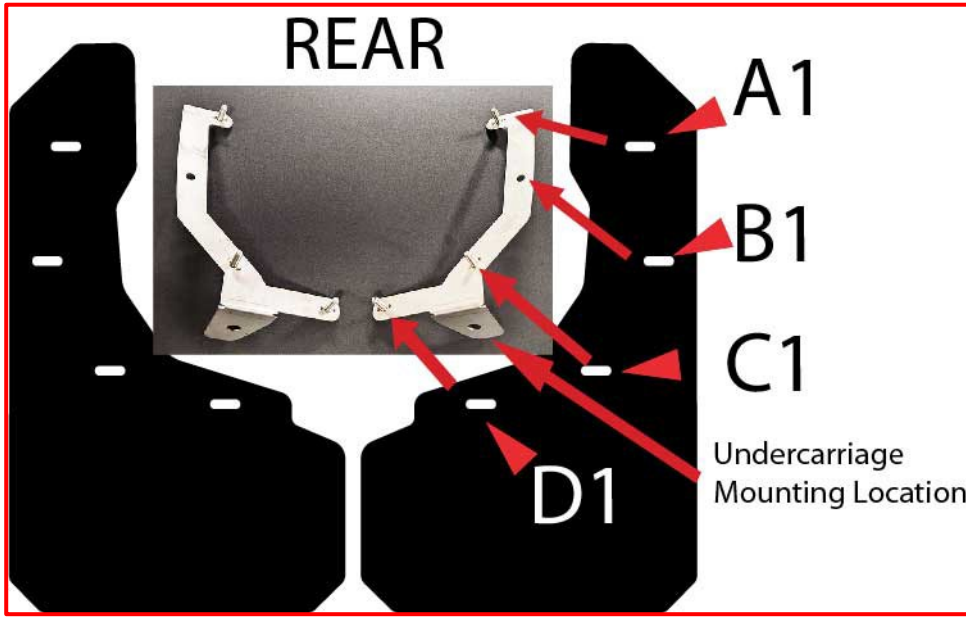


FIGURE 10

