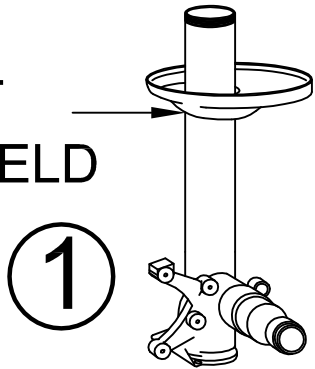


# BMW E34 FRONT

CUT JUST ABOVE WELD



1

REMOVE STOCK SPRING PERCH BY CUTTING THROUGH THE STRUT HOUSING.

2



DISCARD SPRING PERCH SHORTEN HOUSING ONE INCH FROM BOTTOM SECTION.

3

INSERT CARTRIDGE AND SPACER (IF NEEDED). LINE UP STRUT PIECES. TACK WELD, AND REMOVE THE CARTRIDGE BEFORE WELDING COMPLETELY.

4

WELD SPRING PERCH ONTO THE STRUT HOUSING TWO AND ONE HALF INCHES BELOW THE TOP, WITH THE FLAT EDGE FACING THE TIRE.

NOTE: IF HOUSING USES EXTERNAL GLAND NUT MEASURE DOWN FROM BOTTOM OF THREADS.

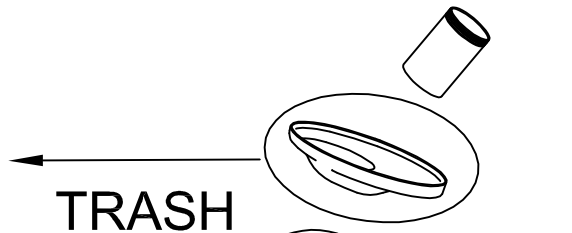
5

REINSTALL CARTRIDGE AND SPACER. IF STOCK GLAND NUT IS LARGE, IT MUST BE GROUND OR MACHINED DOWN TO 2" O.D.

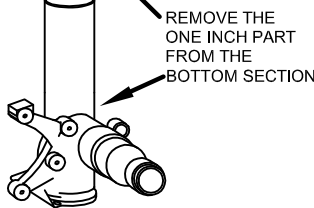
6

INSTALL COIL OVER SLEEVE TO SIT ONTO SPRING PERCH, INSTALL AND TIGHTEN GLAND NUT.

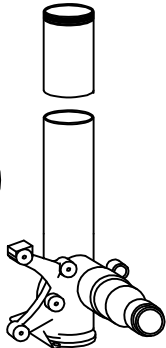
STOCK GLAND NUT MUST BE 2" O.D. MAX



2

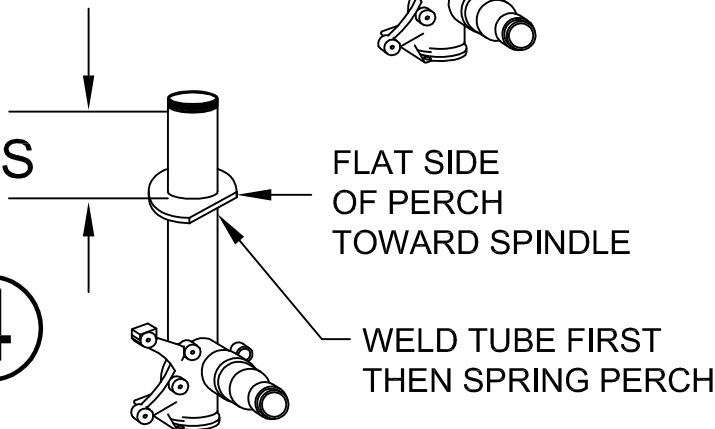


3



2 1/2 INCHES

4



**GROUND CONTROL**

www.ground-control.com

3885 Dividend Drive

Shingle Springs, CA 95682

(530)677-8600 fax (530)677-9090