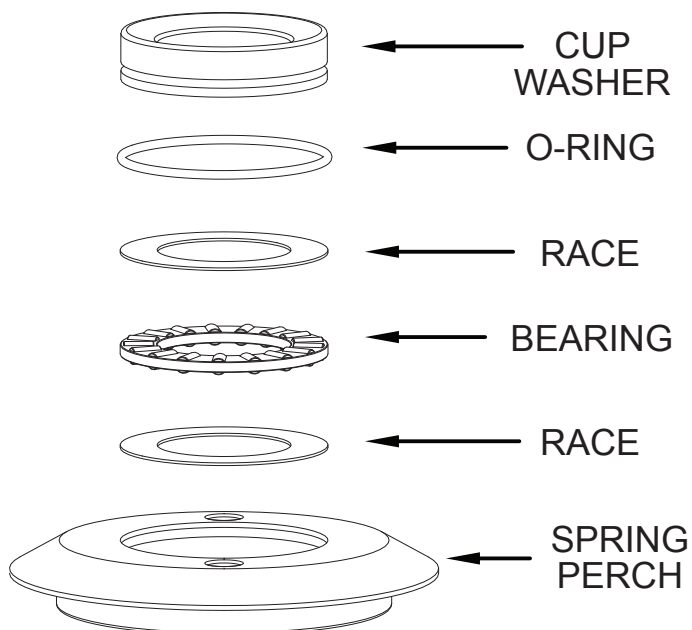
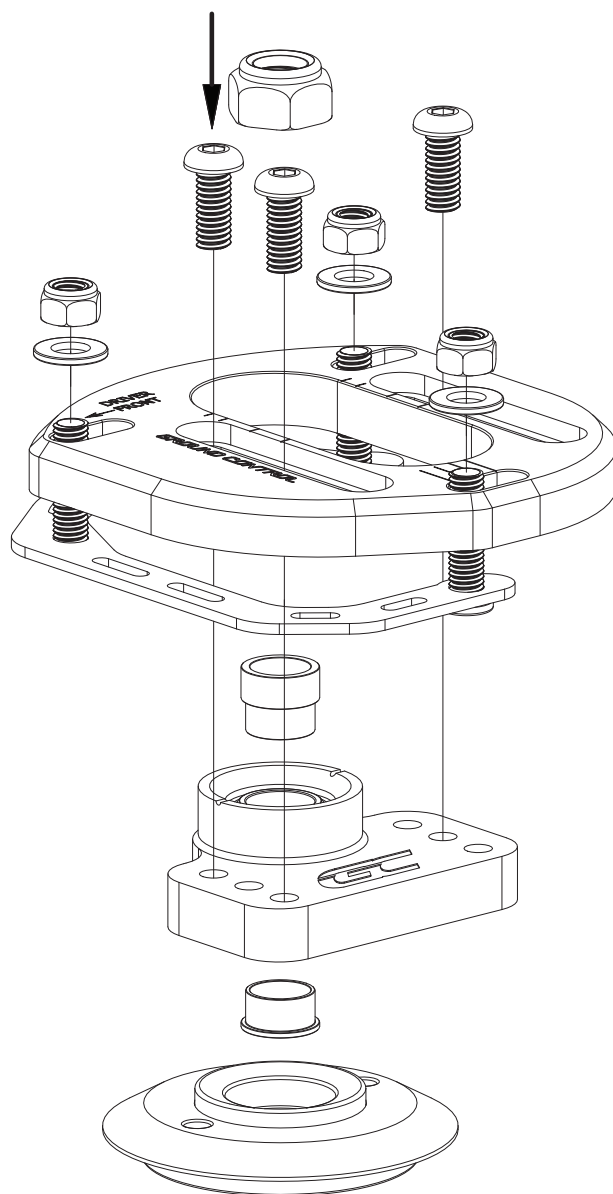


# BMW E30 STREET PREPARED PLATE INSTRUCTIONS



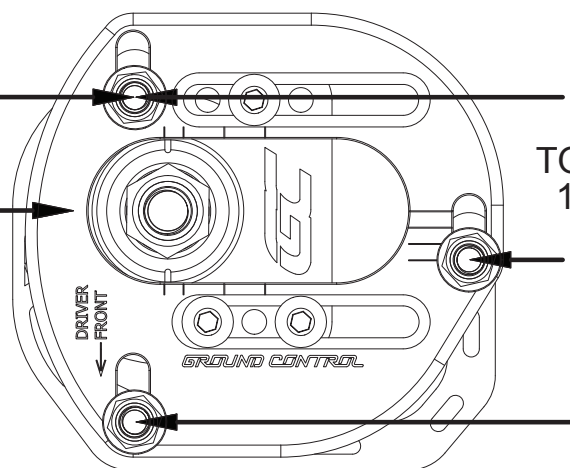
- CLEAN AND DISASSEMBLE ALL COMPONENTS IN SPRING PERCH
- GREASE BEARING USING HIGH TEMP MARINE GREASE
- ENSURE GREASE FILLS HOUSING OF BEARING
- CLEAN O-RING SEATS
- LUBRICATE O-RING AND RE-INSTALL INTO CUP WASHER
- INSTALL COMPONENTS INTO SPRING PERCH
- LUBRICATE TOP SURFACE OF CUP WASHER

TWO BOLTS ARE USED ON THE SIDE NEAREST TO THE FRONT OF THE CAR



HIGH POSITIVE  
CASTER

HIGH NEGATIVE  
CAMBER POSITION



TORQUE TO  
18 FT/LBS

**GROUND CONTROL**

www.groundcontrolstore.com  
3885 Dividend Drive  
Shingle Springs, CA 95682  
(530)677-8600 fax (530)677-9090