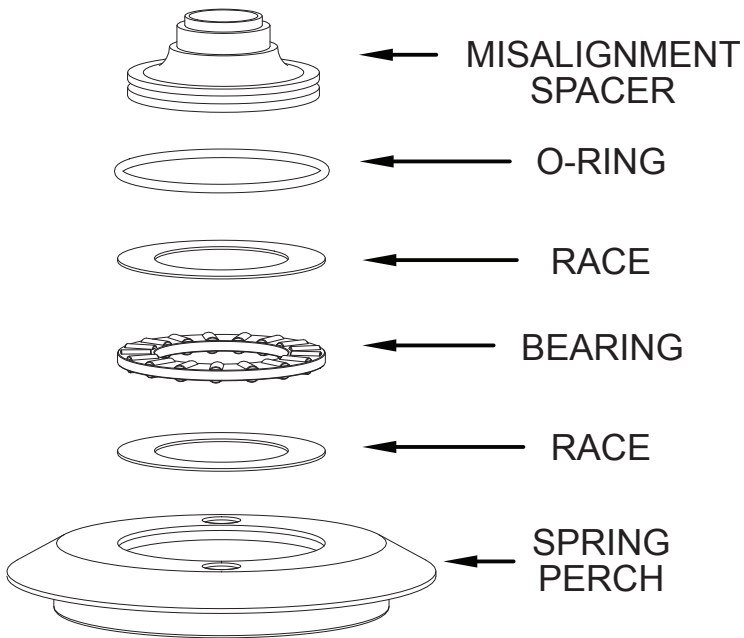
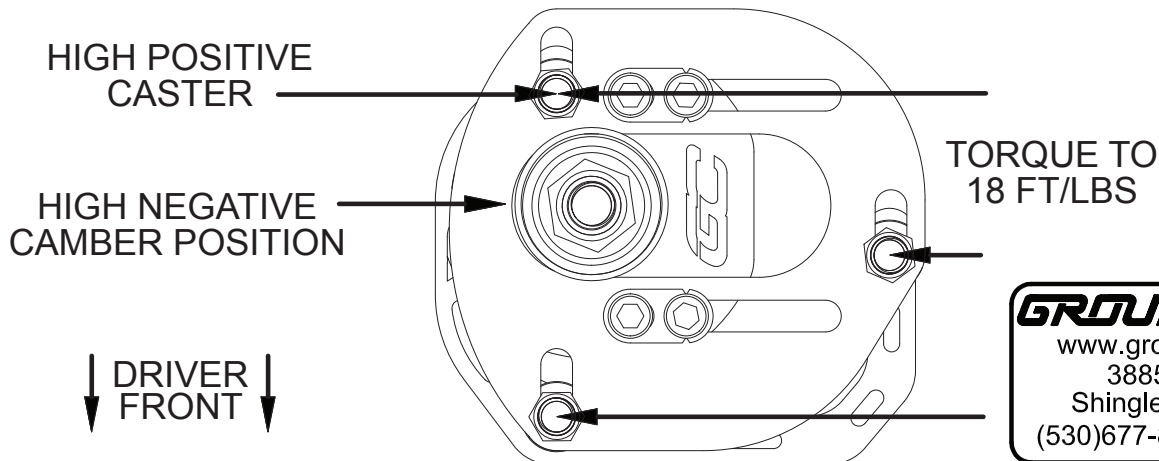
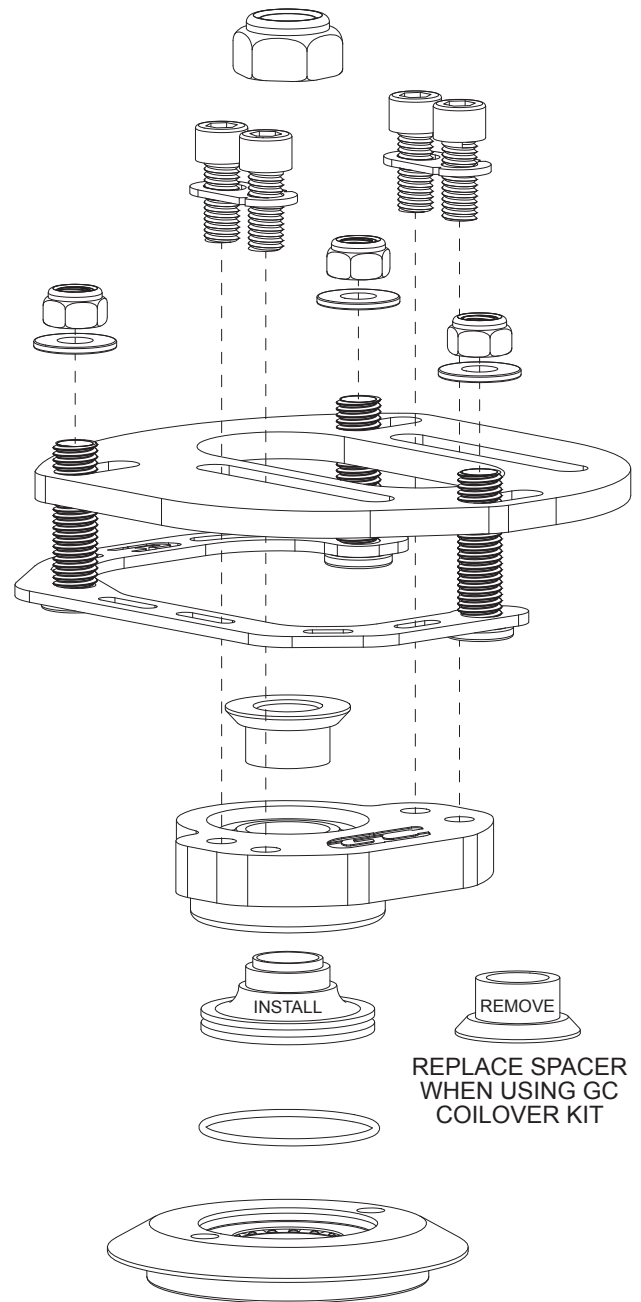


BMW SPEC E30 GROUND CONTROL CAMBER/CASTER PLATE INSTRUCTIONS



- CLEAN AND DISASSEMBLE ALL COMPONENTS IN SPRING PERCH
- GREASE BEARING USING HIGH TEMP MARINE GREASE
- ENSURE GREASE FILLS HOUSING OF BEARING
- CLEAN O-RING SEATS
- LUBRICATE O-RING AND RE-INSTALL INTO MISALIGNMENT SPACER
- INSTALL COMPONENTS INTO SPRING PERCH
- LUBRICATE TOP SURFACE OF CUP WASHER



GROUND CONTROL

www.groundcontrolstore.com
3885 Dividend Drive
Shingle Springs, CA 95682
(530)677-8600 fax (530)677-9090