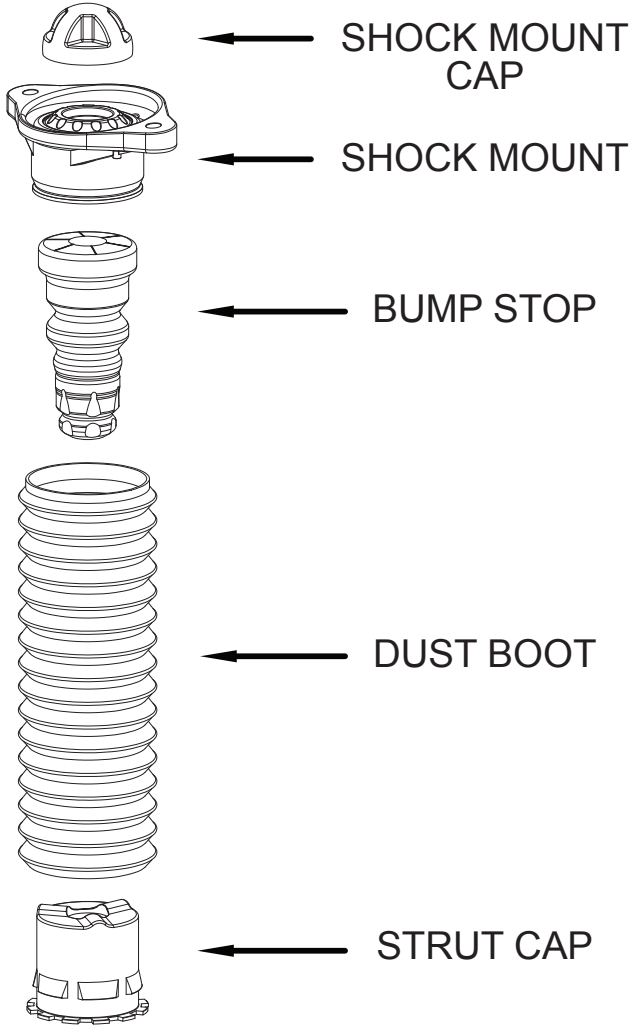


2016 - CIVIC REAR INSTRUCTIONS

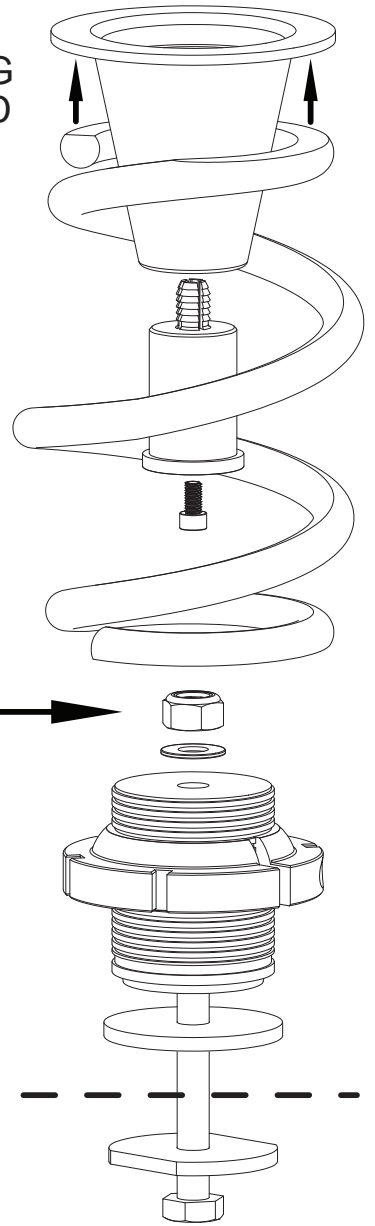
1. REMOVE STRUT FROM CAR
2. REMOVE THE FOLLOWING PARTS FROM OEM STRUT



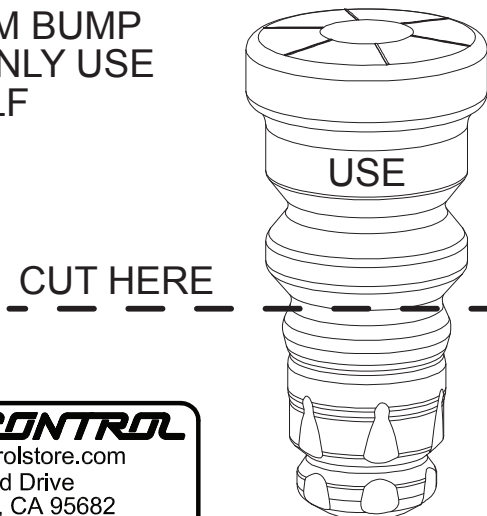
INSTALL CONE BEFORE SETTING CAR ON GROUND

TORQUE NUT TO 24 ft/lbs

LOWER CONTROL ARM

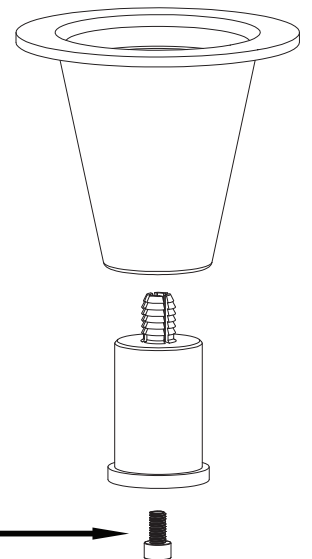


3. CUT OEM BUMP STOP. ONLY USE TOP HALF



1. PLACE SPRING CONE ON BODY
2. INSERT PLUG INTO SPRING CONE
3. TIGHTEN SCREW INSIDE PLUG TO SECURE CONE

LIGHTLY TIGHTEN WITH 4mm ALLEN



GROUND CONTROL

www.groundcontrolstore.com
3885 Dividend Drive
Shingle Springs, CA 95682
(530)677-8600 fax (530)677-9090