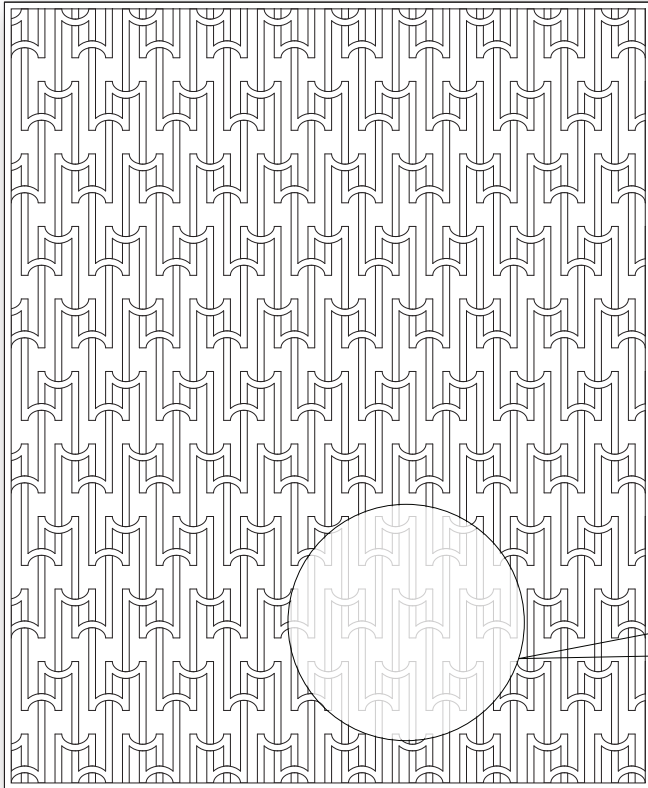


KYLE BUNTING

STUDIO COLLECTION



MARQUEE

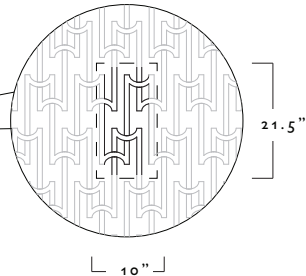
© 2010

CALLING TO MIND THE ARCHITECTURE OF NEW YORK'S ART DECO PERIOD, MARQUEE IS CHARACTERIZED BY BOLD, GEOMETRIC LINES AND ORNAMENTAL SHAPES. THIS DESIGN, FIRST COMMISSIONED BY JEFF ANDREWS FOR THE FLOOR OF KRIS JENNER'S BEDROOM, GAINED NOTORIETY UPON ITS CREATION. THE SIGNATURE POPS OF COLOR ARISE FROM WHAT WAS ORIGINALLY NEGATIVE SPACE BETWEEN THE LATTICEWORK.

AVAILABLE IN ANY SIZE, SHAPE, OR COLOR FOR RUG OR WALL.

STANDARD REPEAT: 10" X 21.5"

STANDARD BORDER: 1"



SIZE GUIDE / POPULAR SIZES

	WIDTHS		LENGTHS	
STANDARD	5 FT	X	8 FT	
STANDARD	6 FT	X	9 FT	
STANDARD	8 FT	X	10 FT	
STANDARD	9 FT	X	12 FT	
STANDARD	10 FT	X	14 FT	

THE STANDARD PATTERN REPEAT FOR THIS DESIGN INCREASES IN 10" X 21.5" INCREMENTS BUT THE PATTERN CAN BE CROPPED TO ANY SIZE, THEREFORE THERE ARE NO STANDARD SIZING INCREMENTS. IN MOST CASES THIS DESIGN CAN BE SPECIFIED FOR ANY SIZE.