



RC ASSEMBLY MODEL KIT

ITEM NO. 97000

DIY SERIES

Scale 1:16

Assembly Plastic
Model Kit

60 PCS
& 5 PTS

2.4GHz
R/C



RASTAR



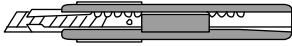
Ferrari SF1000

ATTENTIONS

ATTENTIONS

- The guardian of child(ren) should read and understand the contents of this manual before using the product, and guide child(ren) to use the product properly.
- In order to avoid personal injury, using tools including knives to do assembly should be done by an adult.
- This product should be stored properly to prevent children from accidentally eating it.
- Properly dispose of the scrap materials when removing the parts, and keep them out of the reach of children.
- Plastic bags are not toys, which may cause choking hazard. Please dispose of them properly after disassembly.
- The plastic pieces contain pointed parts. Be careful when assembling and when moving the model after assembly to avoid personal injury.
- Only alkaline or rechargeable batteries are applicable for the product.
- Different types of batteries or new and old batteries are not to be mixed, exhausted batteries should be removed from the model.
- The battery should be replaced under adult supervision and be put inside the model with correct polarity. Power terminals must not be short-circuited.
- Non-rechargeable batteries should not be recharged. Rechargeable batteries should be removed from the model before charging and be recharged under the supervision of adult. Damaged or leaked batteries are not to be charged.
- Only batteries of the same or equivalent type are recommended to be used.
- Wires and components must not be plugged into output sockets, and the toy must not be connected to the power sources which are more than the recommended quantity.
- Do not expose battery to sun, or drop it. Keep the battery away from fire, heat and water.
- Skin and clothing to be washed immediately if you make contact with leaked liquid from the battery.
- For better preservation of rechargeable batteries, please regularly recharge it. Only a charger of the same or equivalent type is recommended to be used.

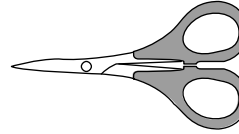
TOOLS (NOT INCLUDED)



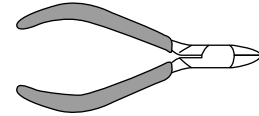
Knife



Tweezers



Scissors

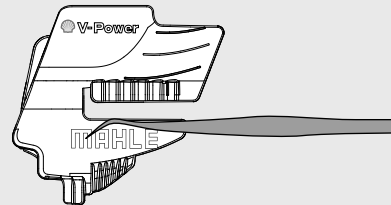
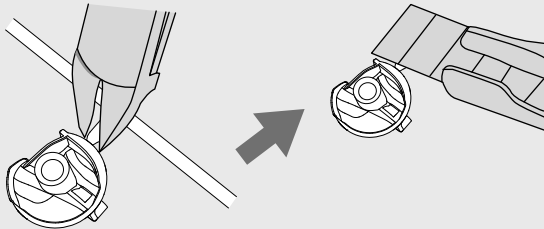


Flat-nose pliers

Components/ Assembly of Components

★Use flat-nose pliers to clip the component off, and then use knife to trim the interface part to be smooth.

★Peel off the sticker with tweezers and flatten it on the component.



⚠ WARNING: Tools must be used by adult (knife, tweezers, flat-nose pliers, scissors), please be careful to avoid personal injury!

CAR BODY

The engine, suspension and driver's cab of the car are all black, the car body is red and the wheels are painted in silver. The stickers will be displayed during the following assembly process, you can also refer to the package drawing.

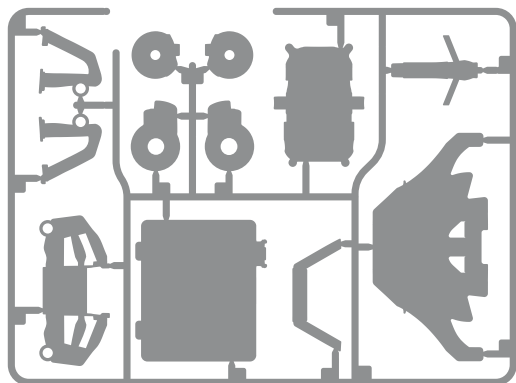
USE OF THE STICKERS FOR CAR BODY

- (1) Take the stickers out.
- (2) Carefully peel the sticker off with tweezers.
- (3) Hold the edge of the back plate and put the sticker on the model.
- (4) Fix the sticker with fingers and make the sticker in place.
- (5) Gently press the sticker downwards until the bubbles disappear.

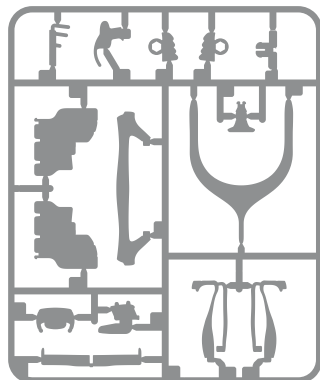
COMPONENTS

INSTALLED PROCEDURES FOR Ferrari SF1000

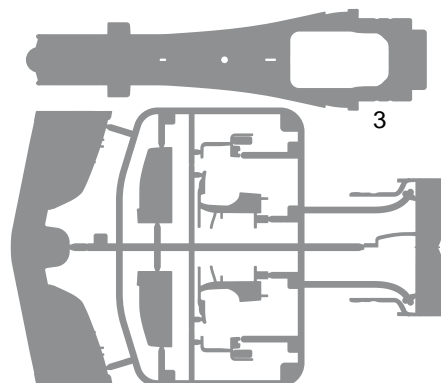
- (1) Take all parts out and make sure nothing is missing.
- (2) Do not remove all the parts at first, but just do assembly step by step according to instruction of the manual.
- (3) Take the stickers out and stick them on components first according to the instructions.
- (4) Assemble the car according to the figure.
- (5) Assembly process is completed.



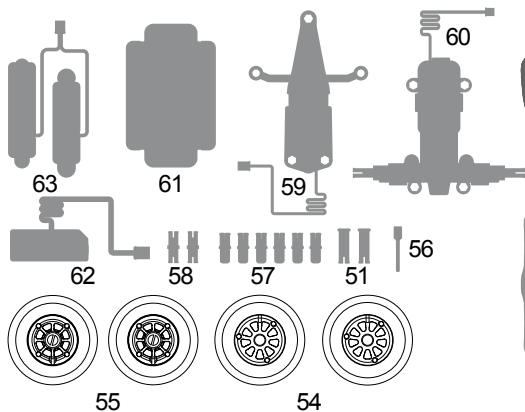
B13-B24



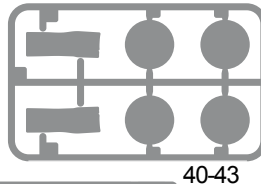
C25-C39



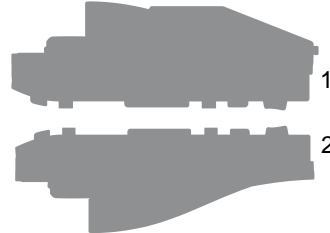
A5-12



91600

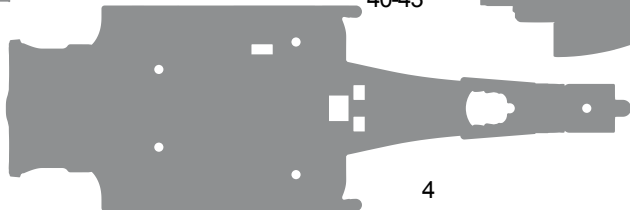


40-43



1

2



4

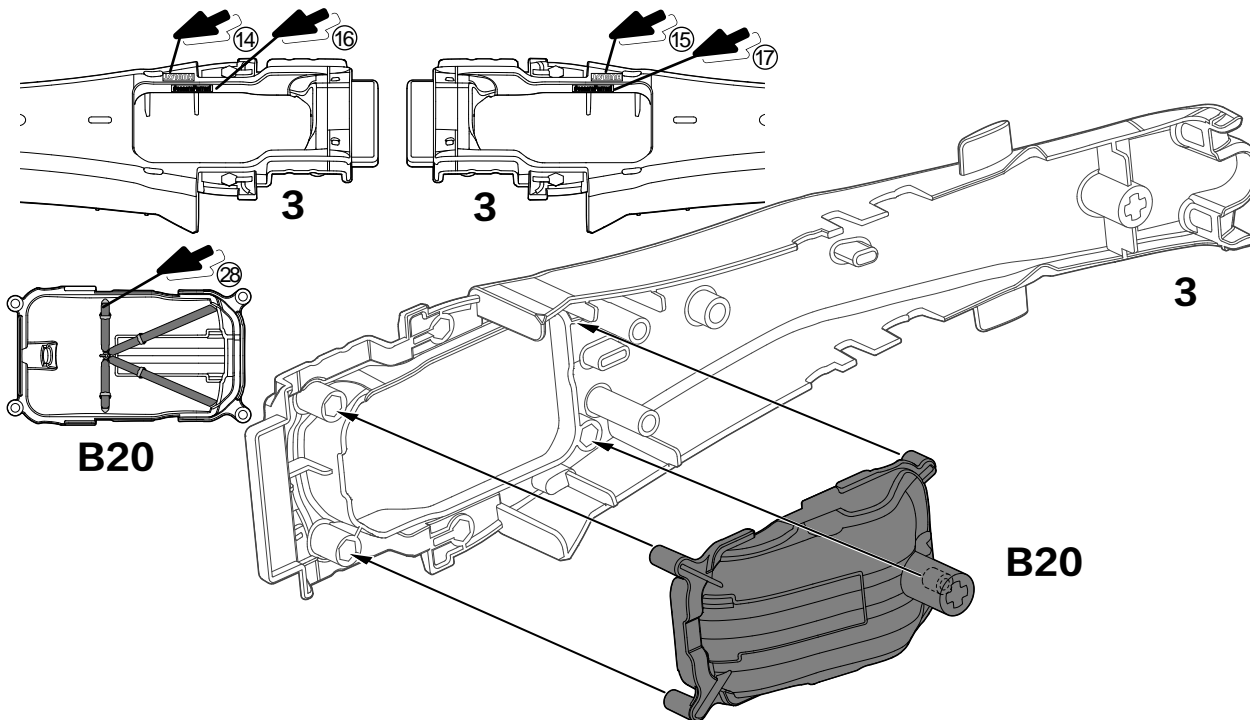
- [1]** The item number of the applicable remote controller is 91600.
- [2]** There are numbers corresponding to each model, please do assembly based on the corresponding numbers according to instructions.

The following is a detailed tutorial and guidance on how to assemble each part. Please pay attention to where there are icons on the right.



stickers — accessories

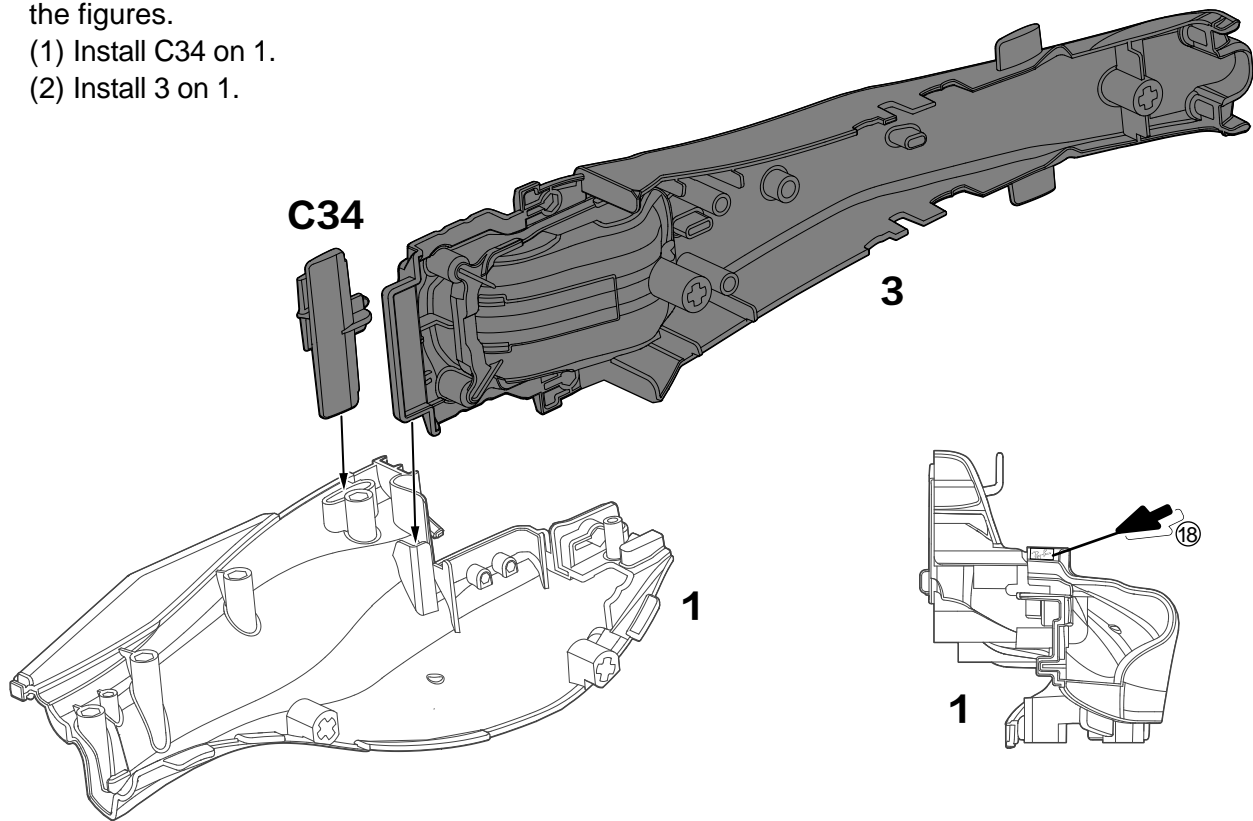
- 1** Stickers on the corresponding position according to the serial number marked in the figures.
Install B20 on 3.



2 Stickers on the corresponding position according to the serial number marked in the figures.

(1) Install C34 on 1.

(2) Install 3 on 1.



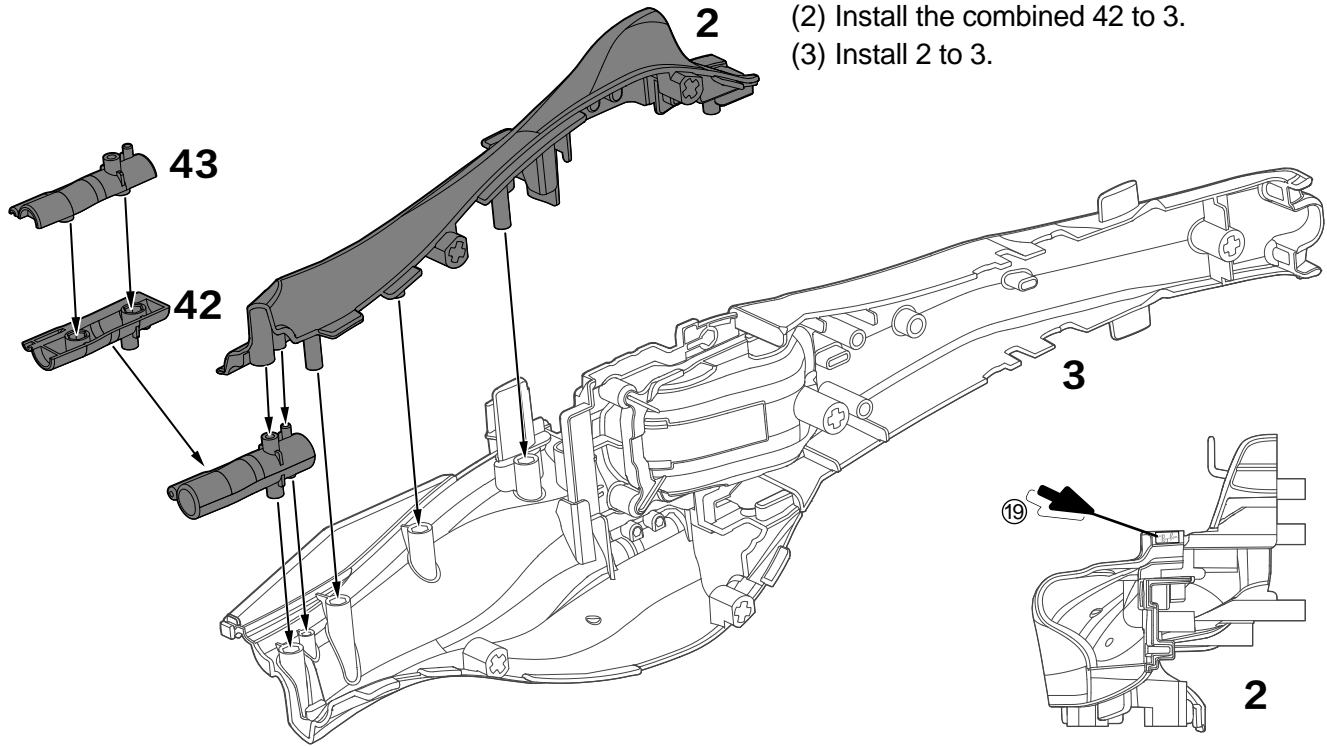
3

Stickers on the corresponding position according to the serial number marked in the figures.

(1) Combine 42 with 43.

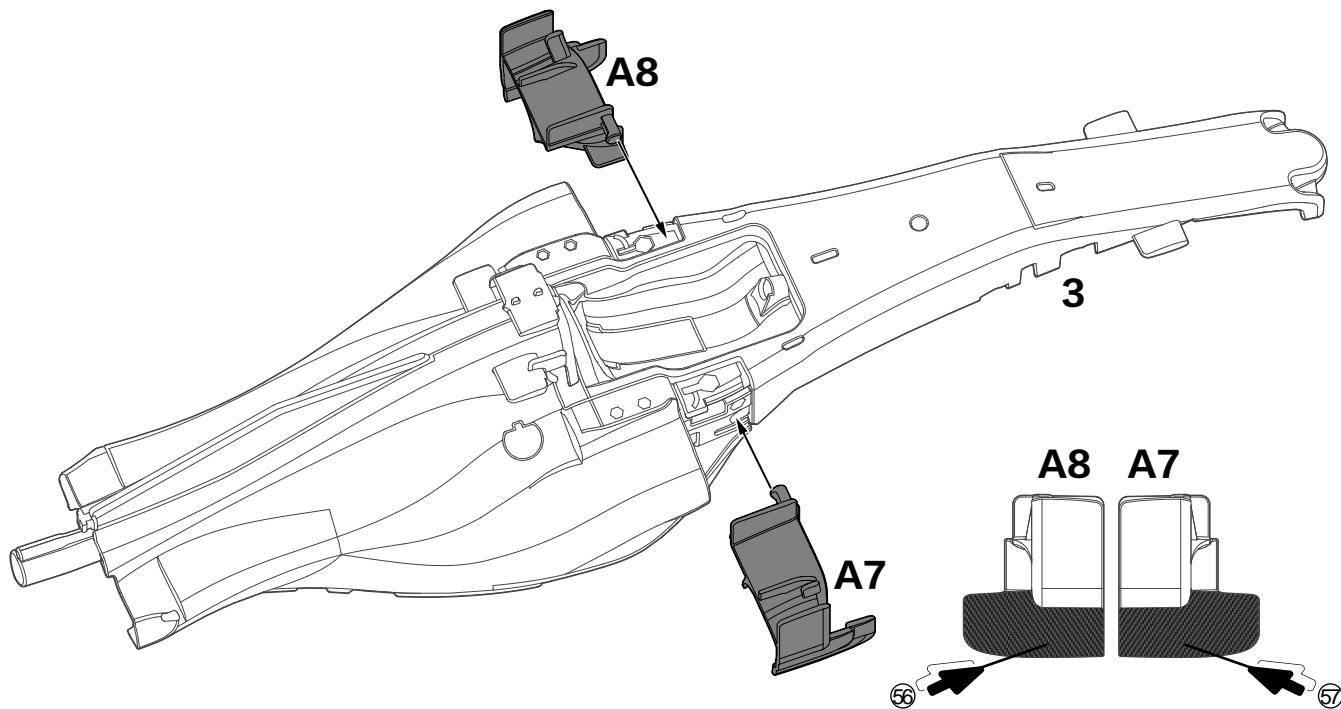
(2) Install the combined 42 to 3.

(3) Install 2 to 3.

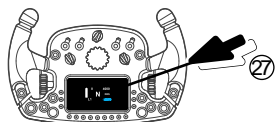


4

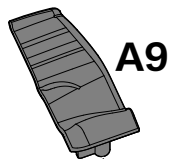
Stickers on the corresponding position according to the serial number marked in the figures.
Install A7 and A8 on 3.



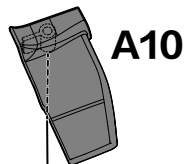
5



C35



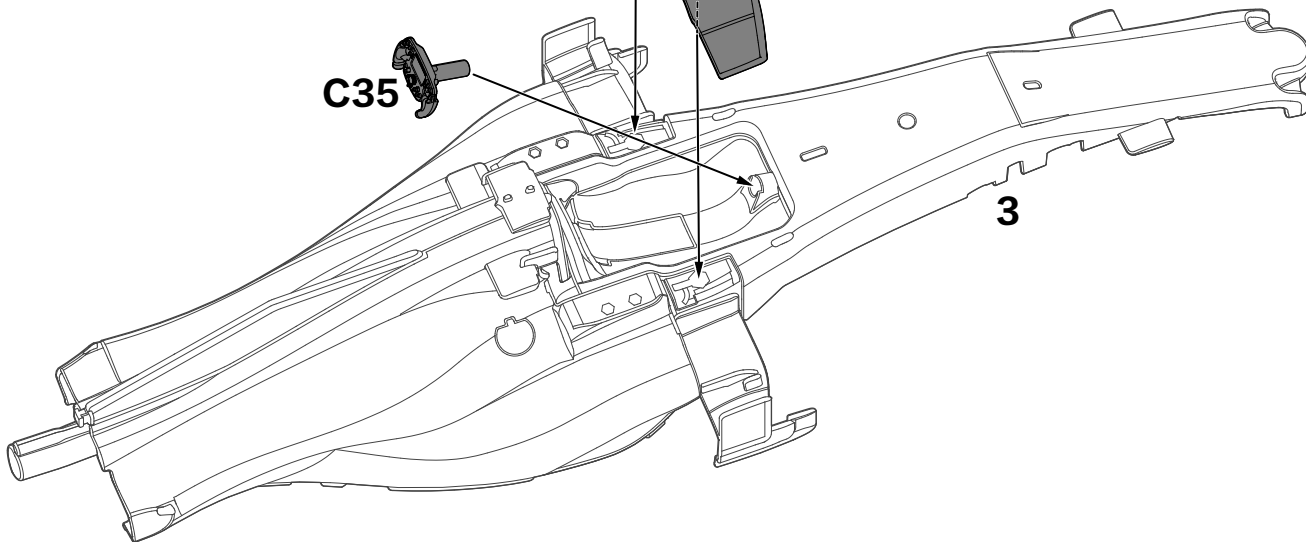
A9



A10



C35



3

Stickers on the corresponding position according to the serial number marked in the figures.

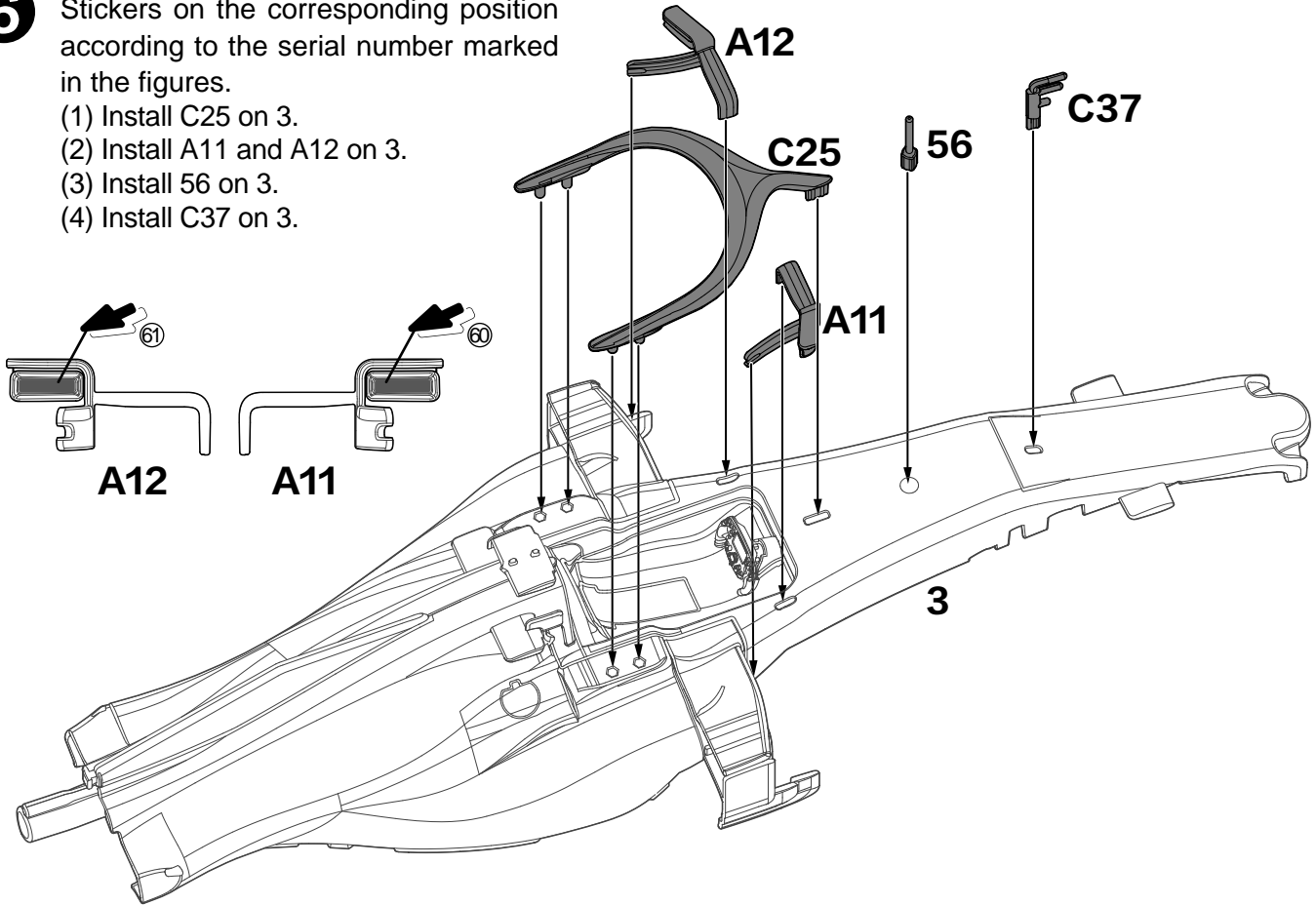
(1) Install A9 and A10 on 3.

(2) Install C35 on 3.

6

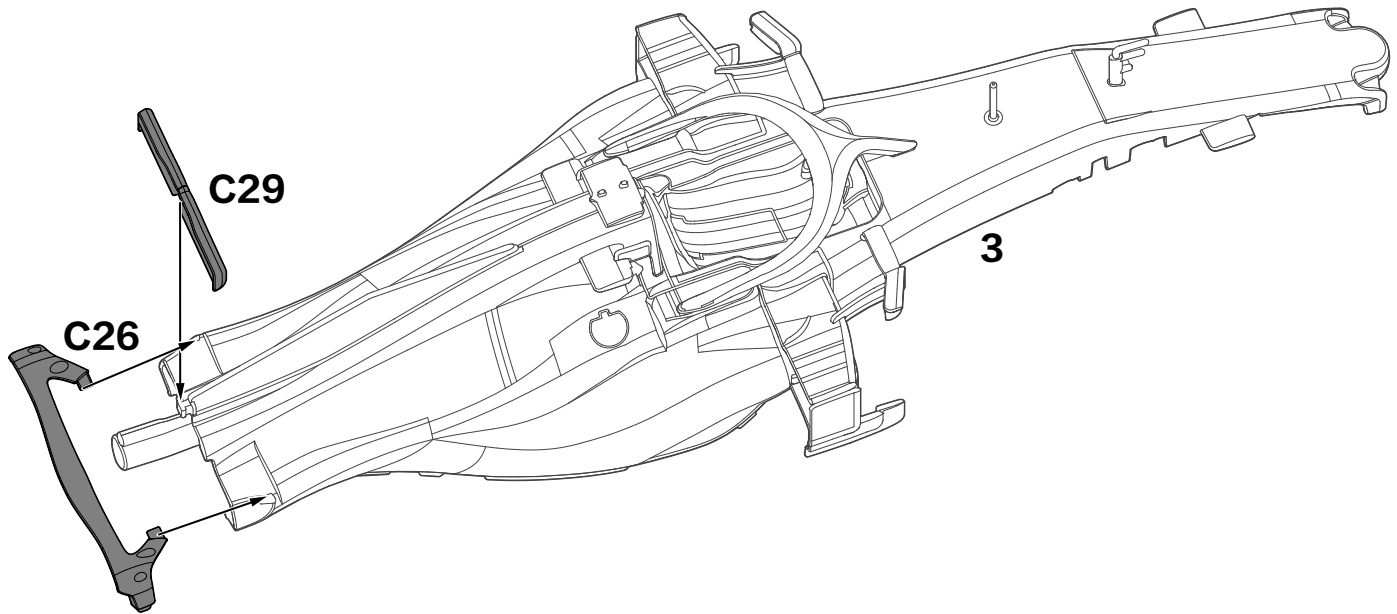
Stickers on the corresponding position according to the serial number marked in the figures.

- (1) Install C25 on 3.
- (2) Install A11 and A12 on 3.
- (3) Install 56 on 3.
- (4) Install C37 on 3.



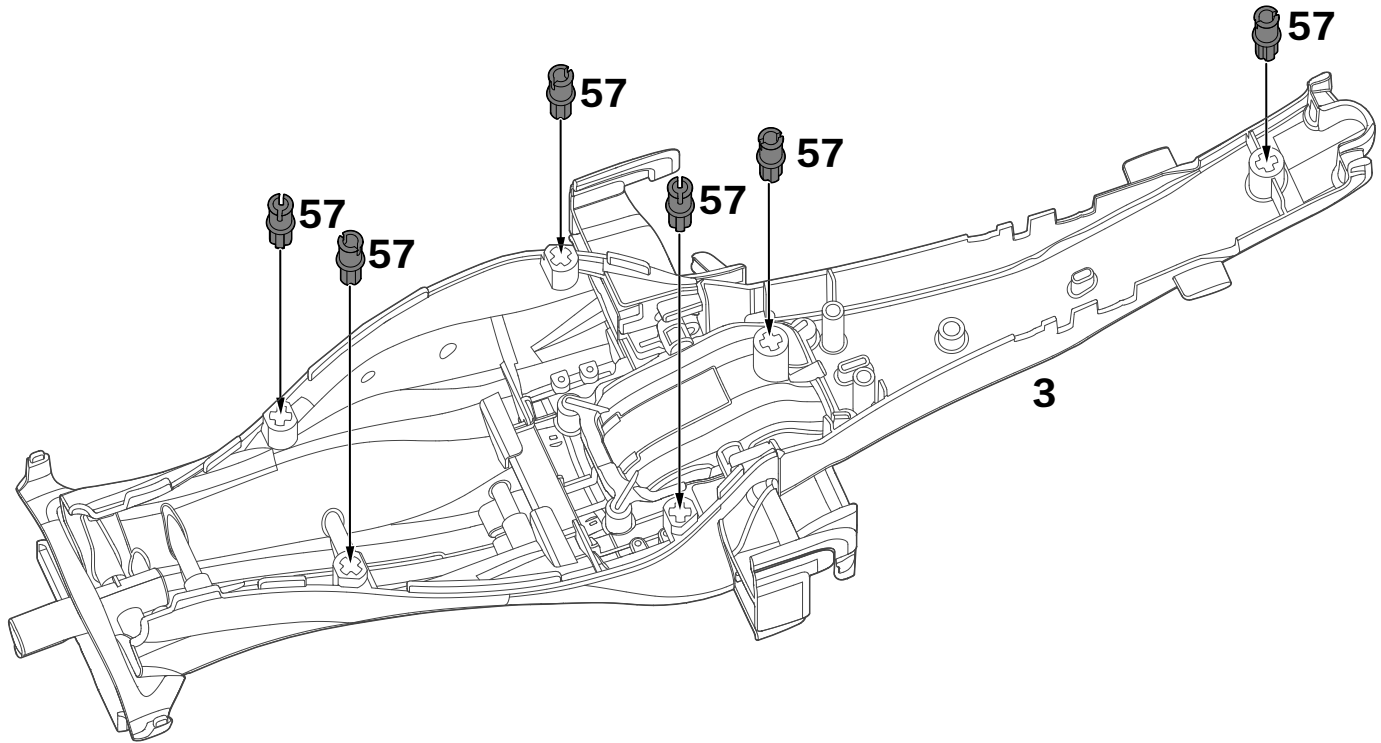
7

- (1) Install C29 on 3.
- (2) Install C26 on 3.



8

Install 6 pieces of 57 on the left and right sides of 3.

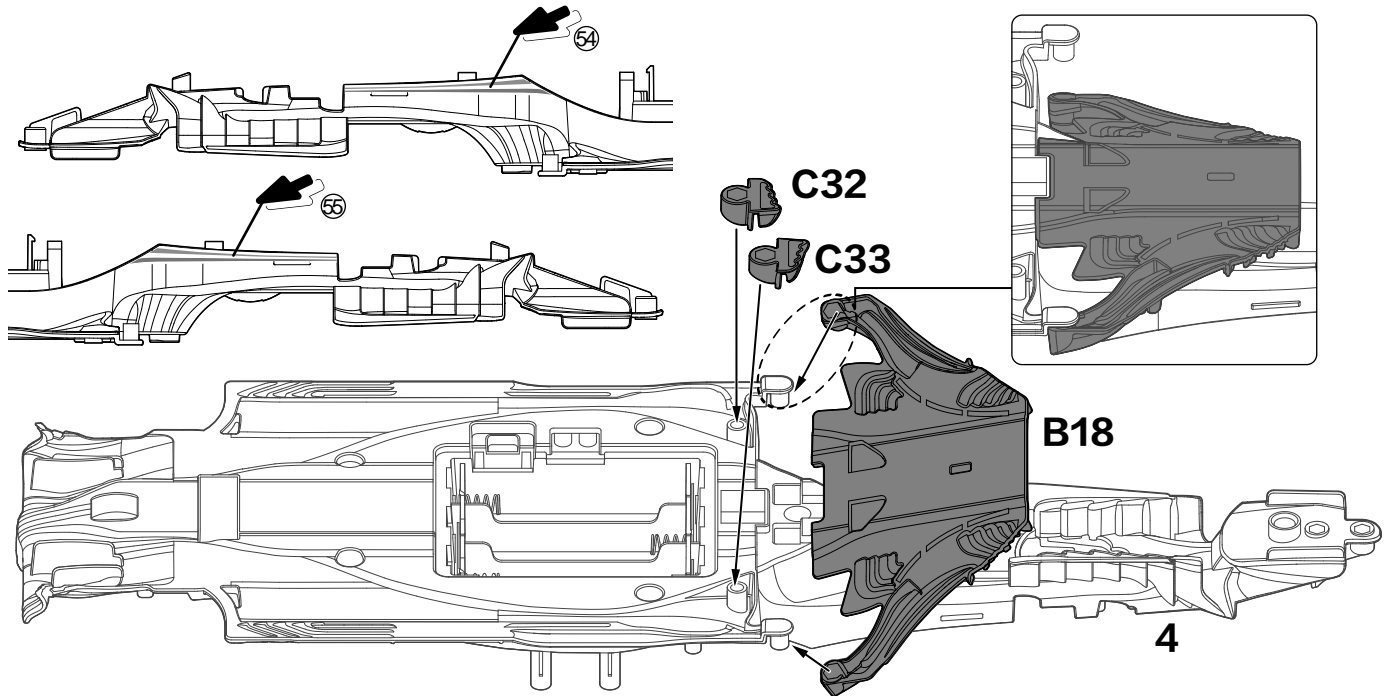


9

Stickers on the corresponding position according to the serial number marked in the figures.

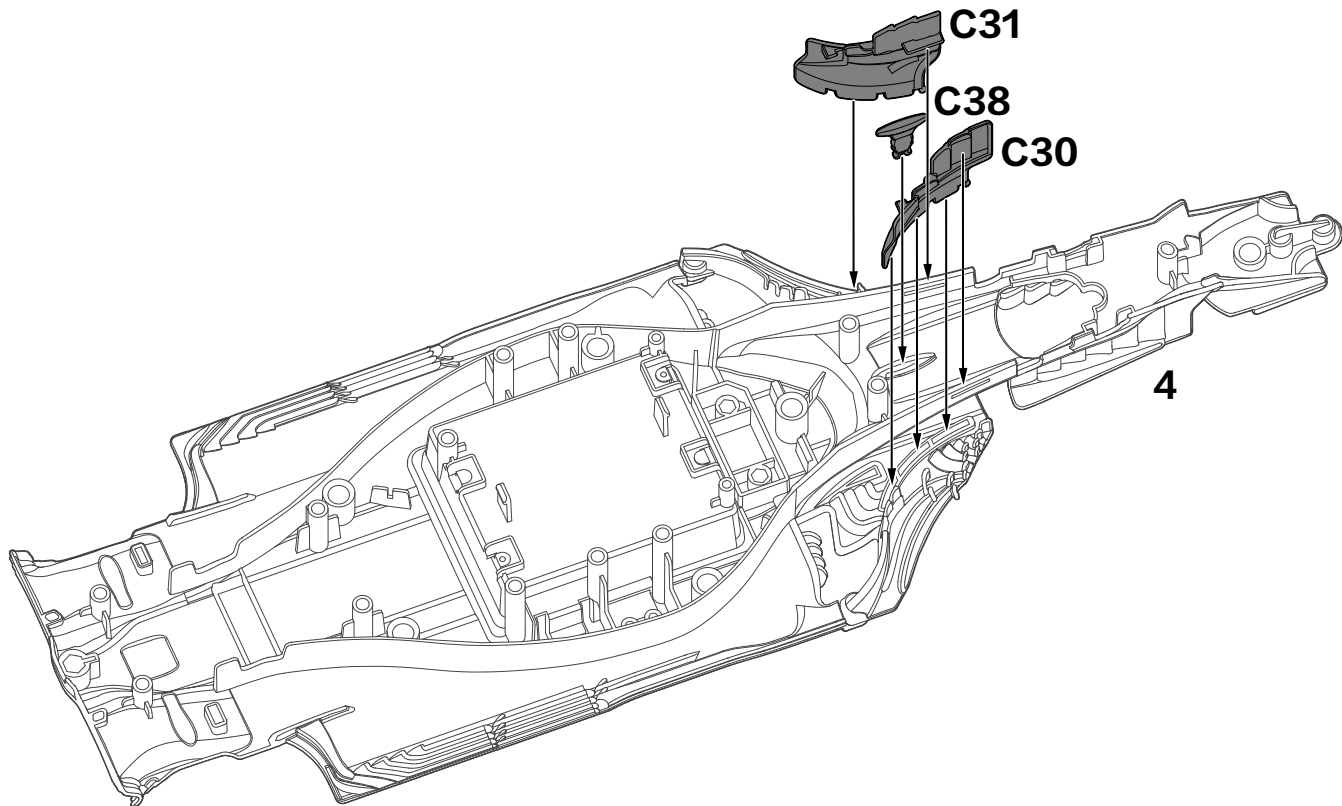
(1) Install C32 and C33 on 4.

(2) Install B18 on 4.



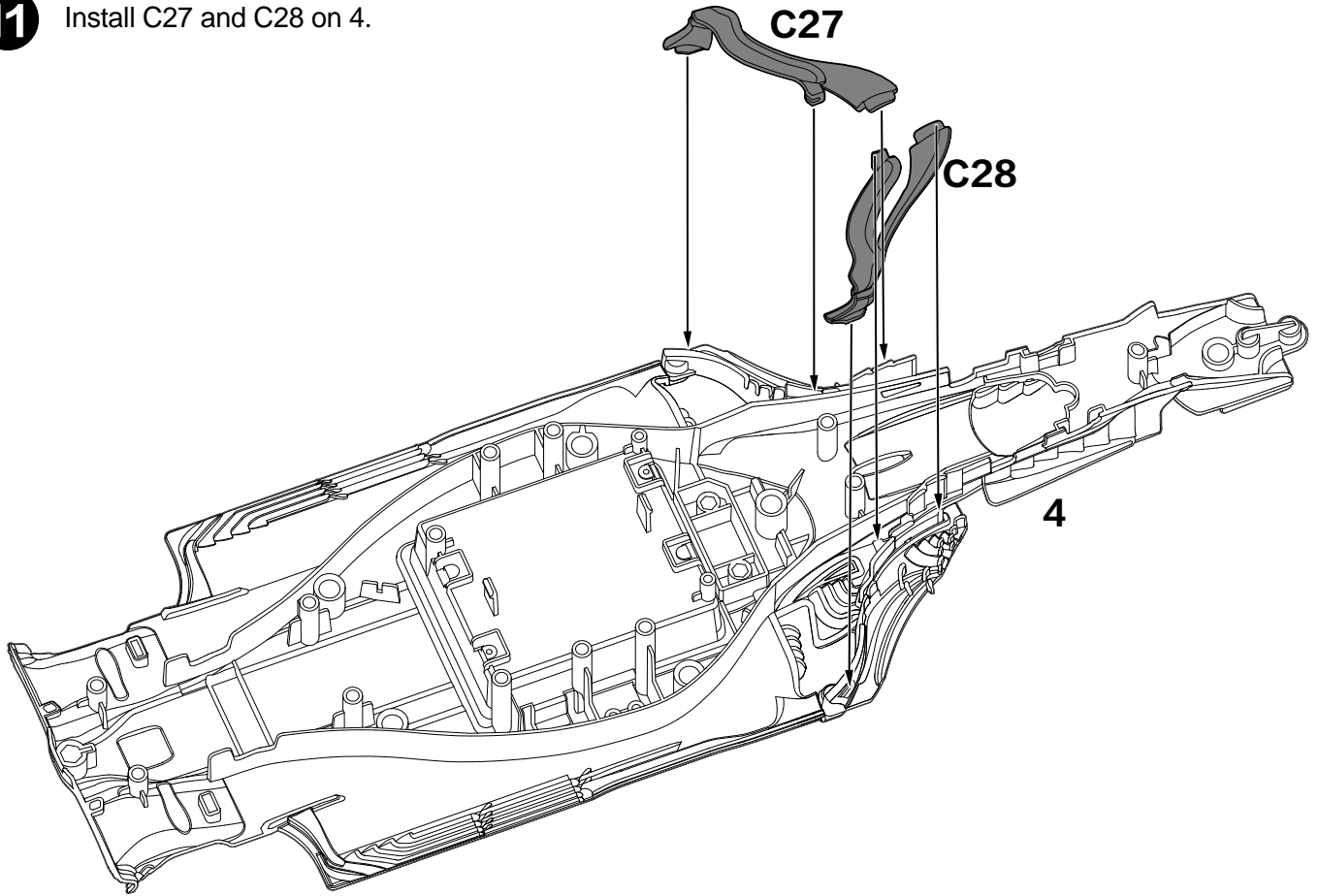
10

- (1) Install C38 on 4.
- (2) Install C30 and C31 on 4.



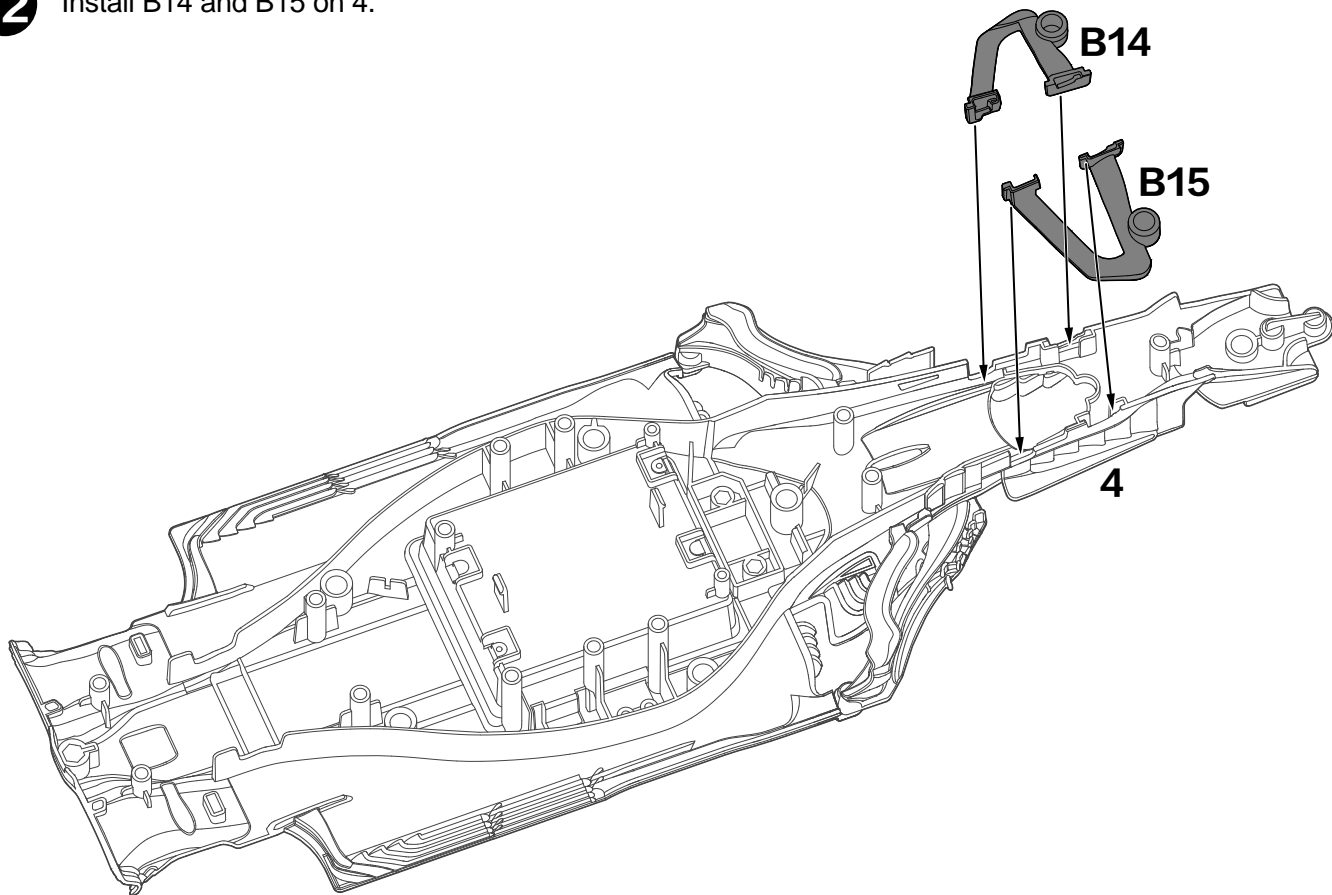
11

Install C27 and C28 on 4.



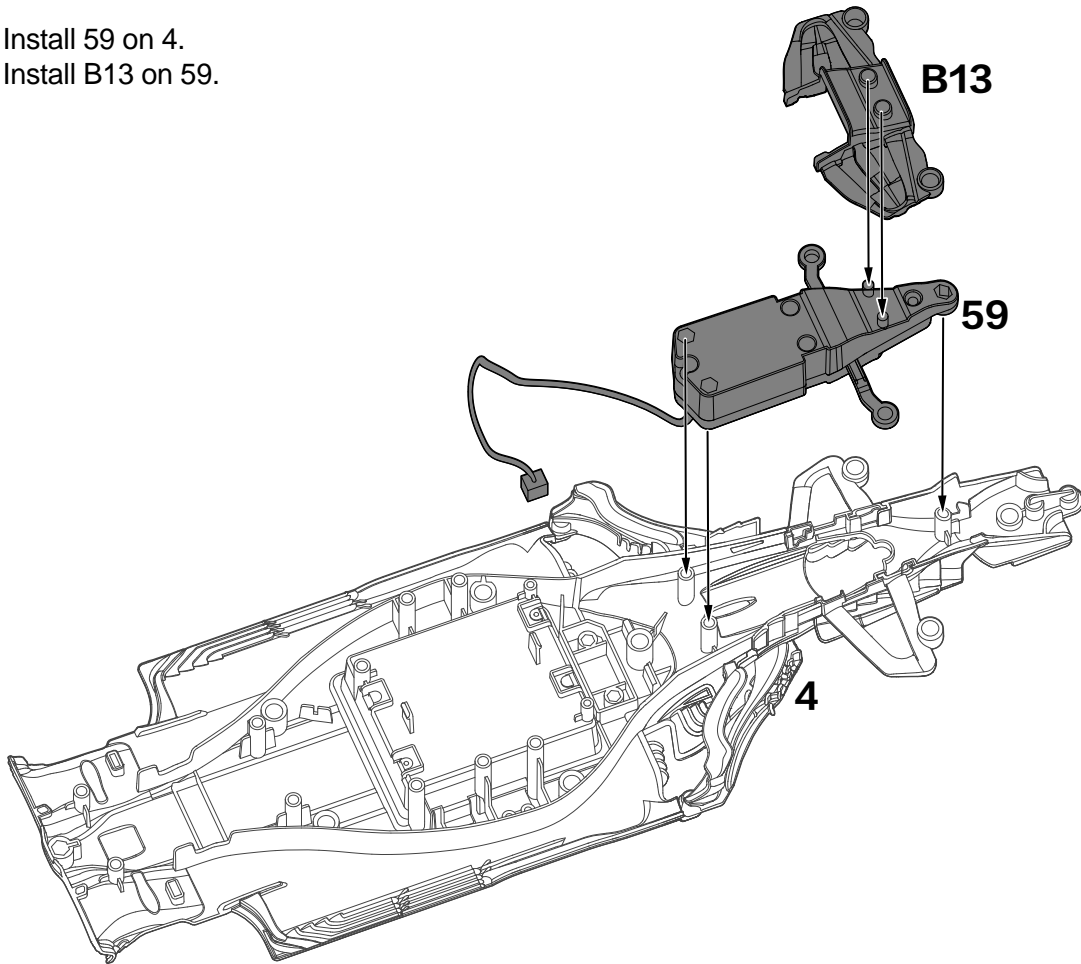
12

Install B14 and B15 on 4.

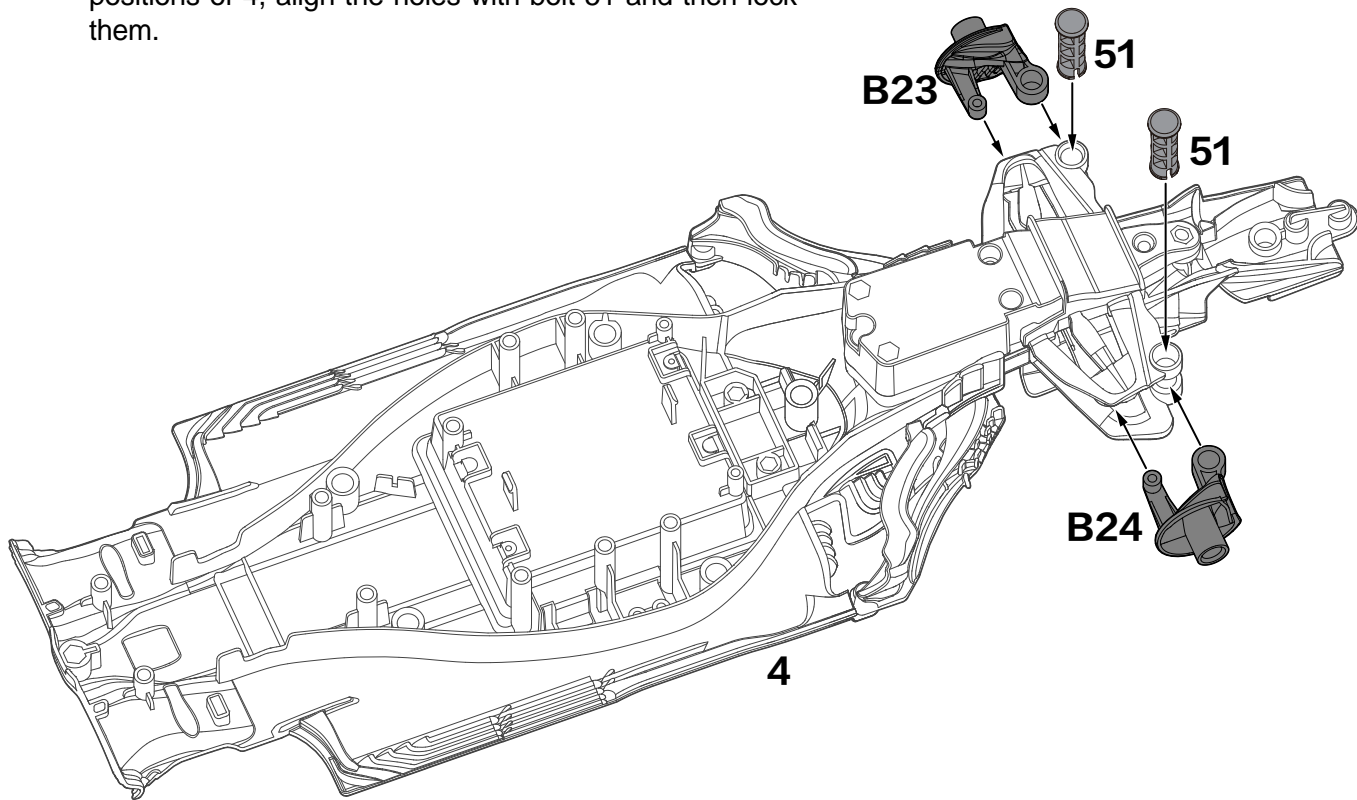


13

- (1) Install 59 on 4.
- (2) Install B13 on 59.



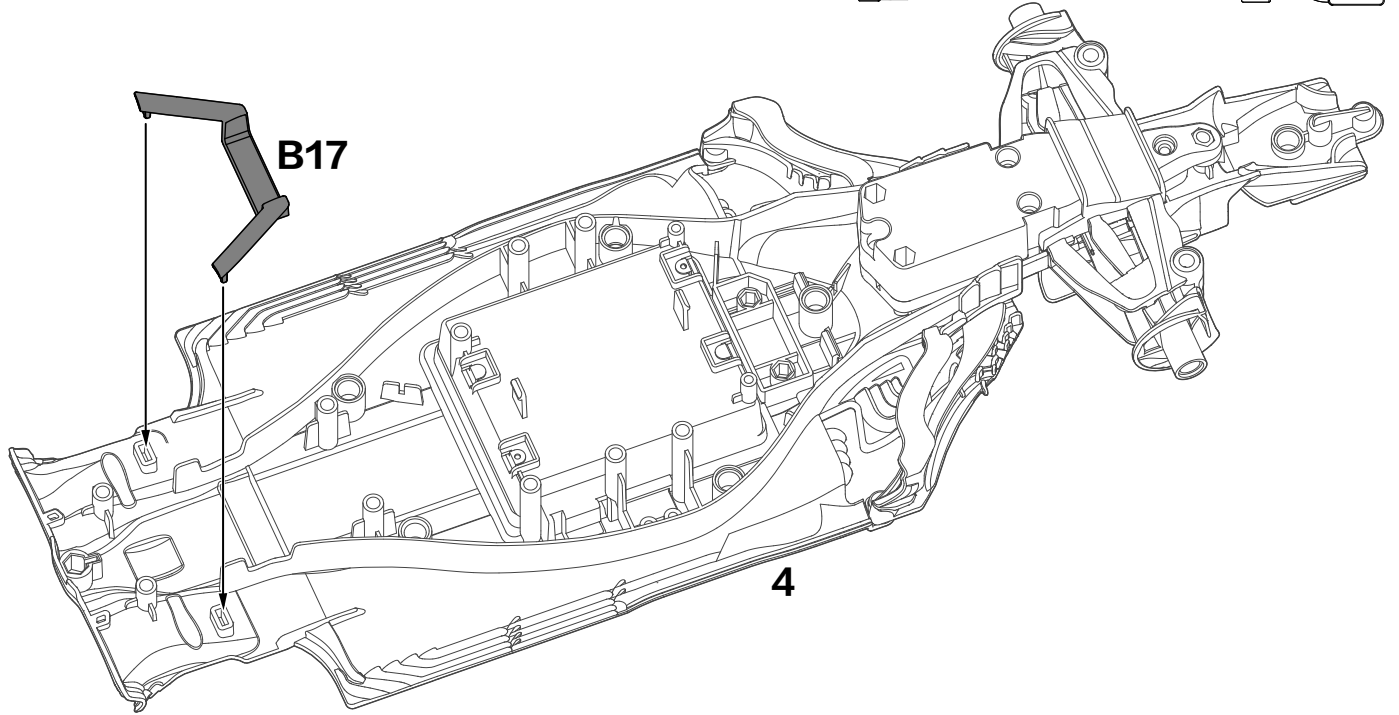
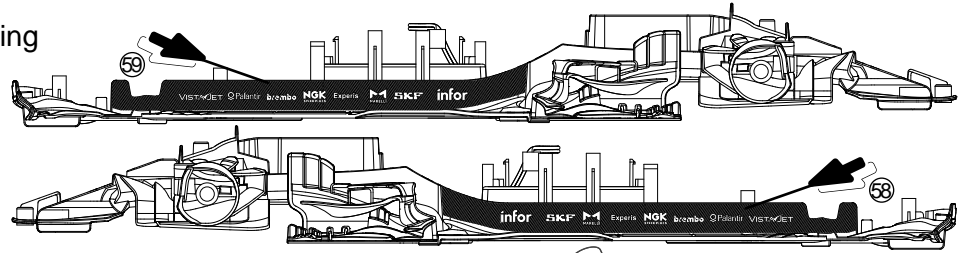
- 14** Install B23 and B24 respectively to the corresponding positions of 4, align the holes with bolt 51 and then lock them.



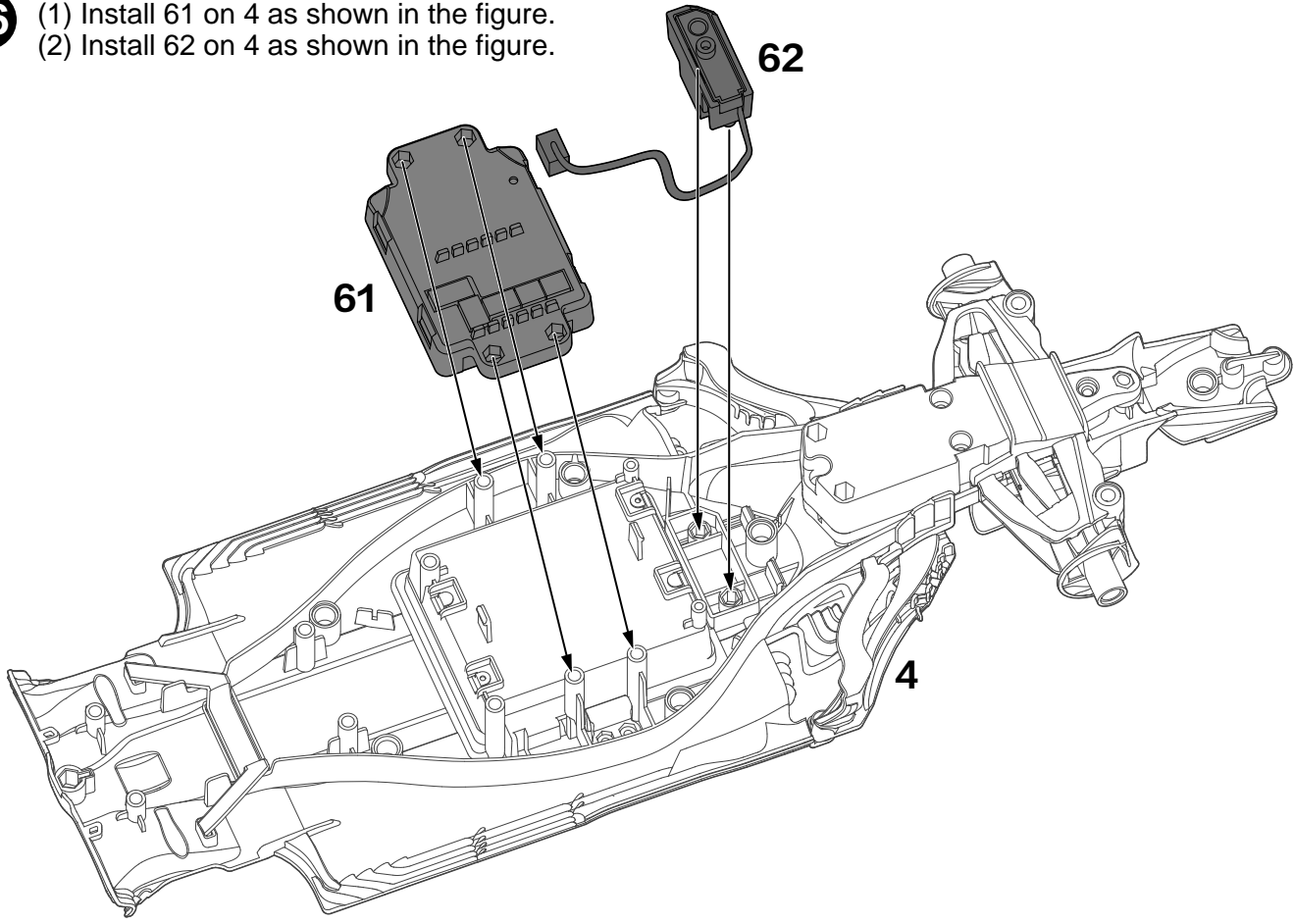
15

Stickers on the corresponding position according to the serial number marked in the figures.

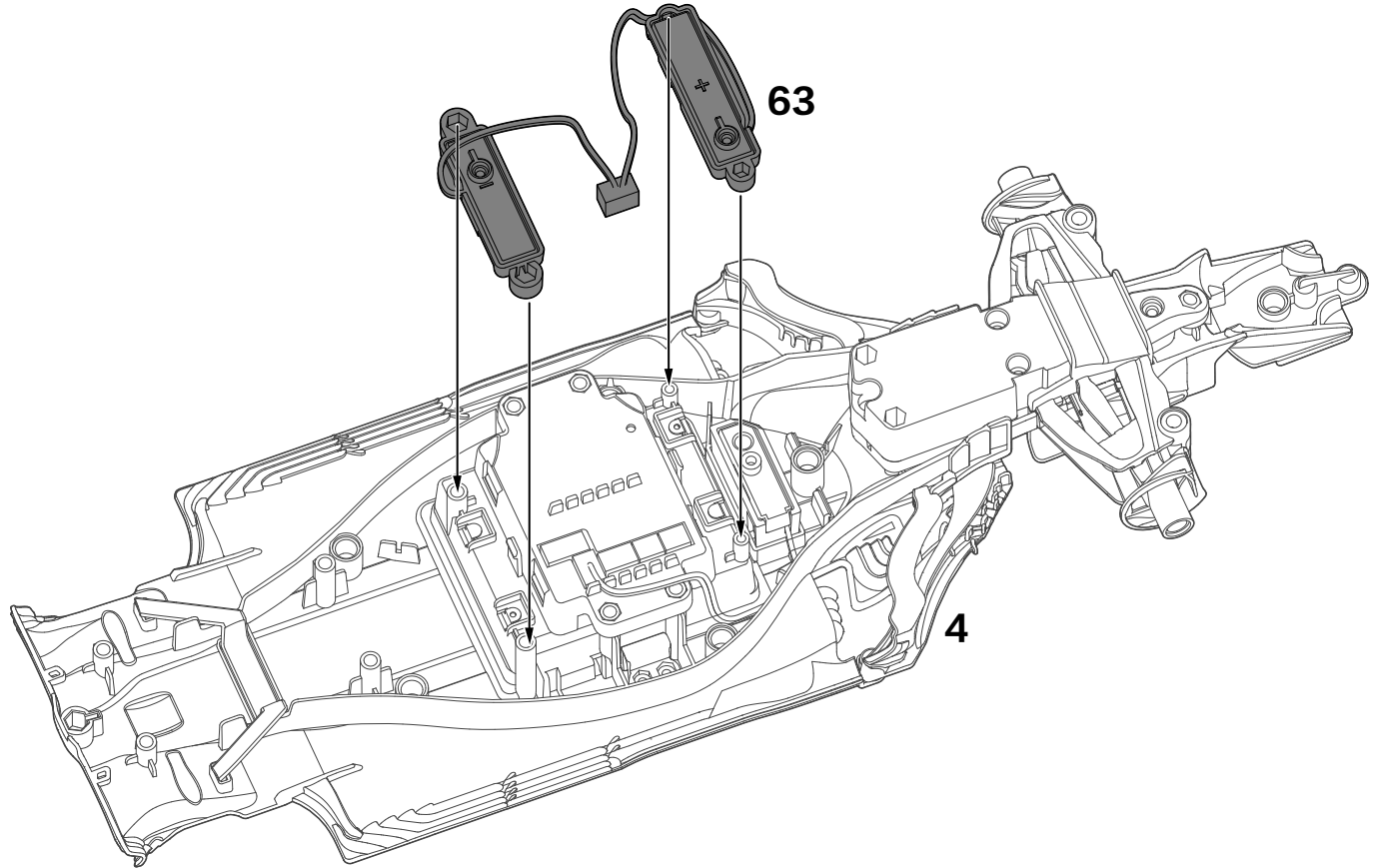
- (1) Install B17 on 4.
- (2) Install C36 on 4.



- 16** (1) Install 61 on 4 as shown in the figure.
(2) Install 62 on 4 as shown in the figure.

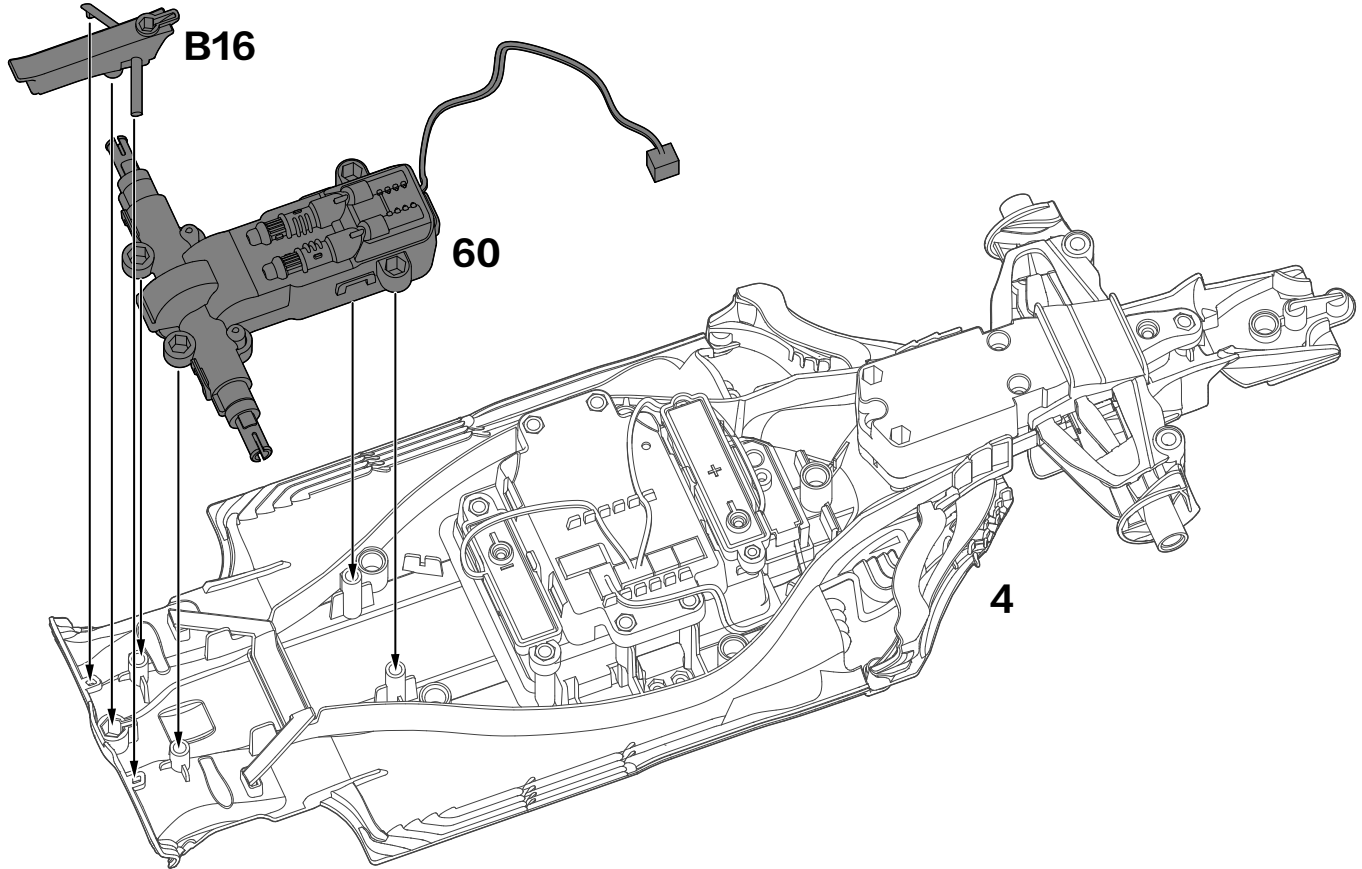


- 17** Install 63 on 4 as shown in the figure, Pay attention to the correspondence between positive and negative poles.



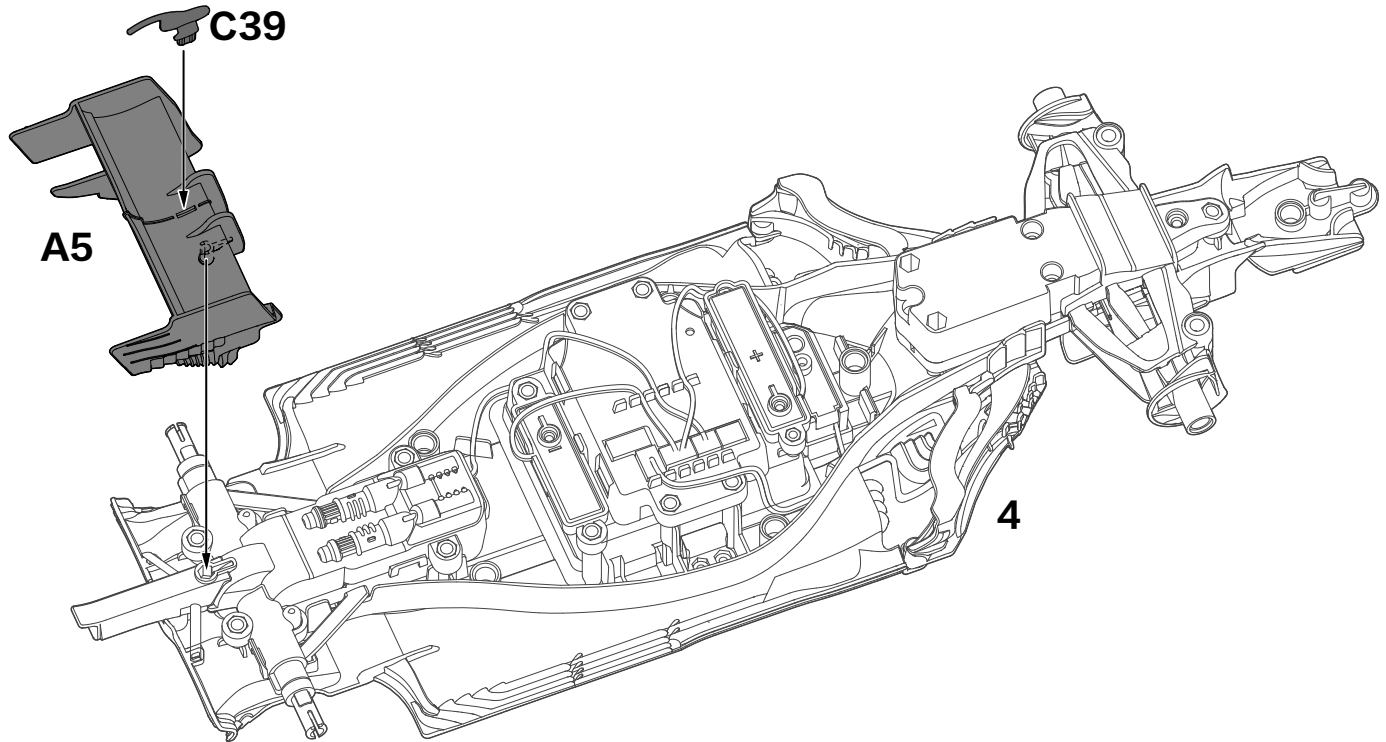
18

- (1) Install 60 on 4 as shown in the figure.
- (2) Install B16 on 4 as shown in the figure.

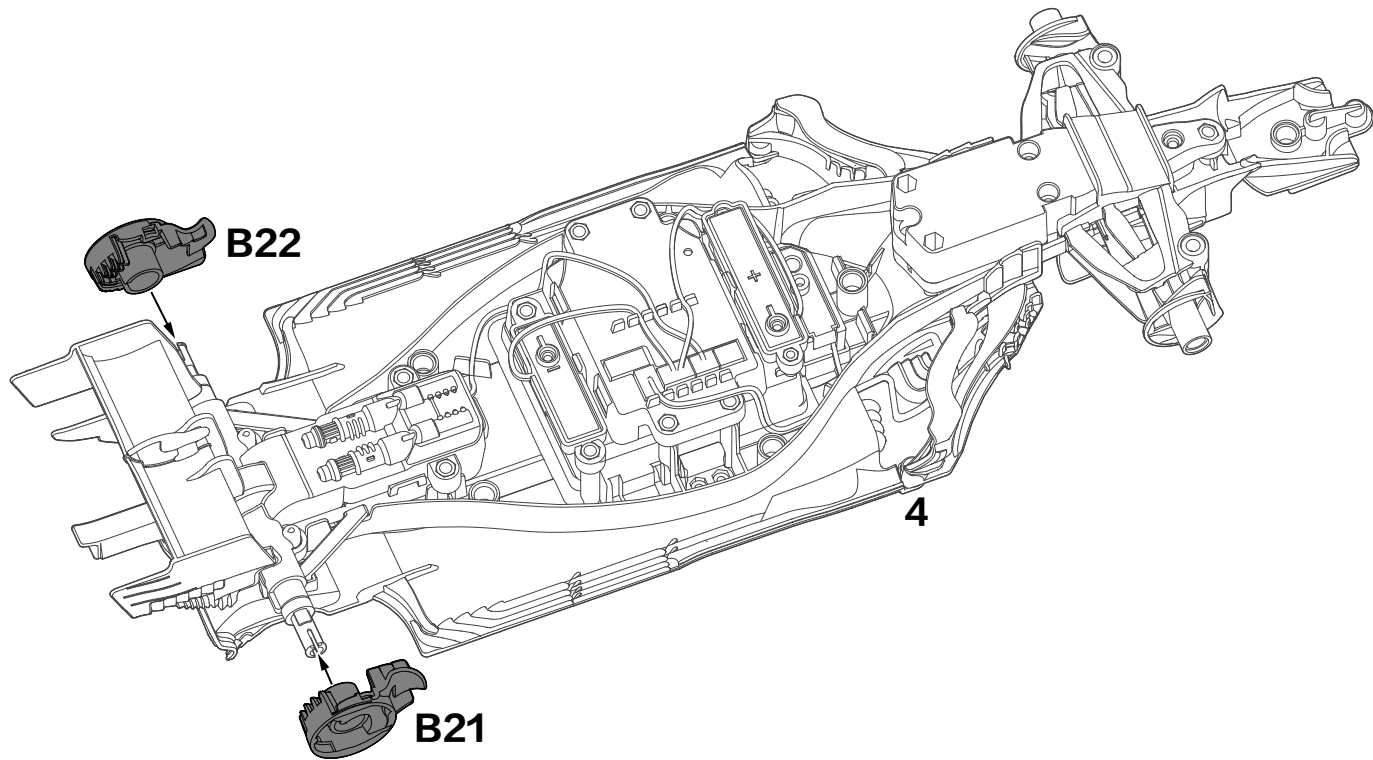


19

- (1) Install C39 on A5.
- (2) Install A5 on 4.

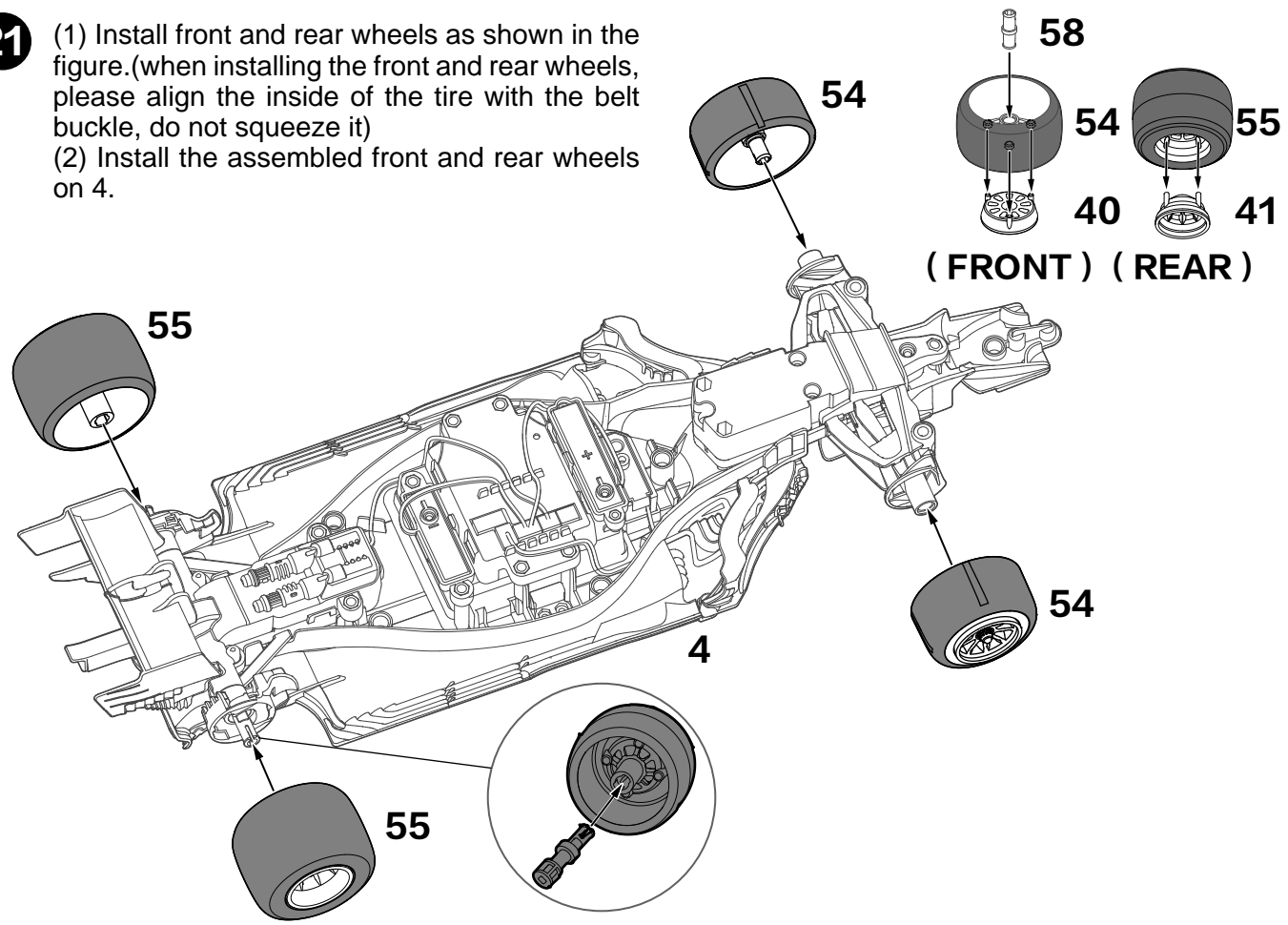


20 Install B21 and B22 on 4.



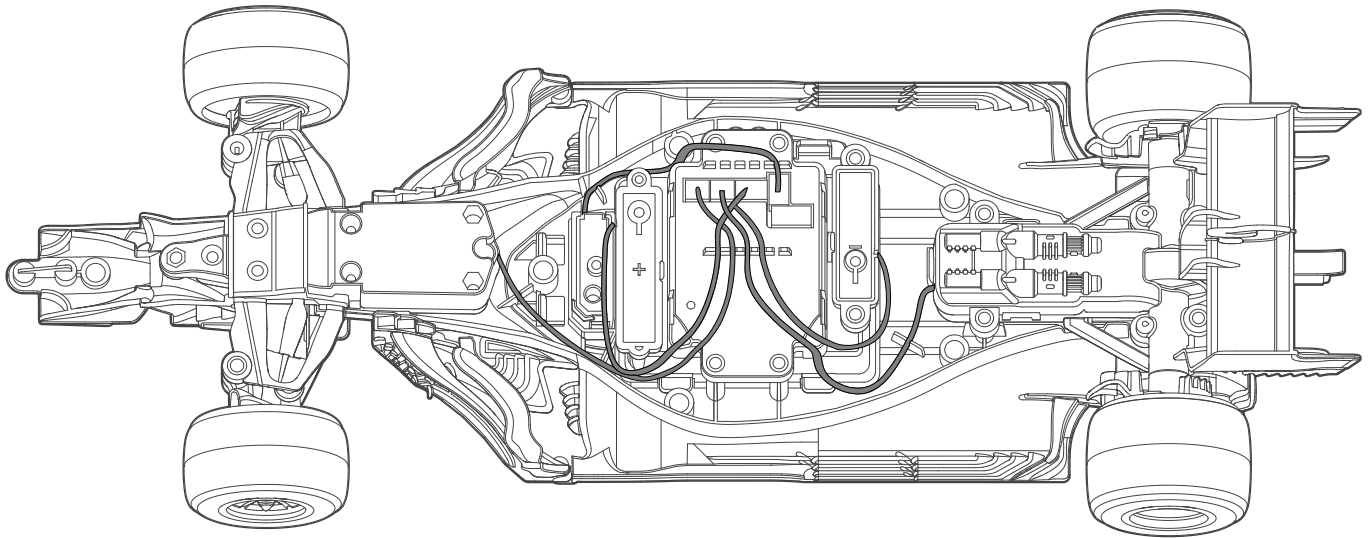
21

(1) Install front and rear wheels as shown in the figure. (when installing the front and rear wheels, please align the inside of the tire with the belt buckle, do not squeeze it)
(2) Install the assembled front and rear wheels on 4.



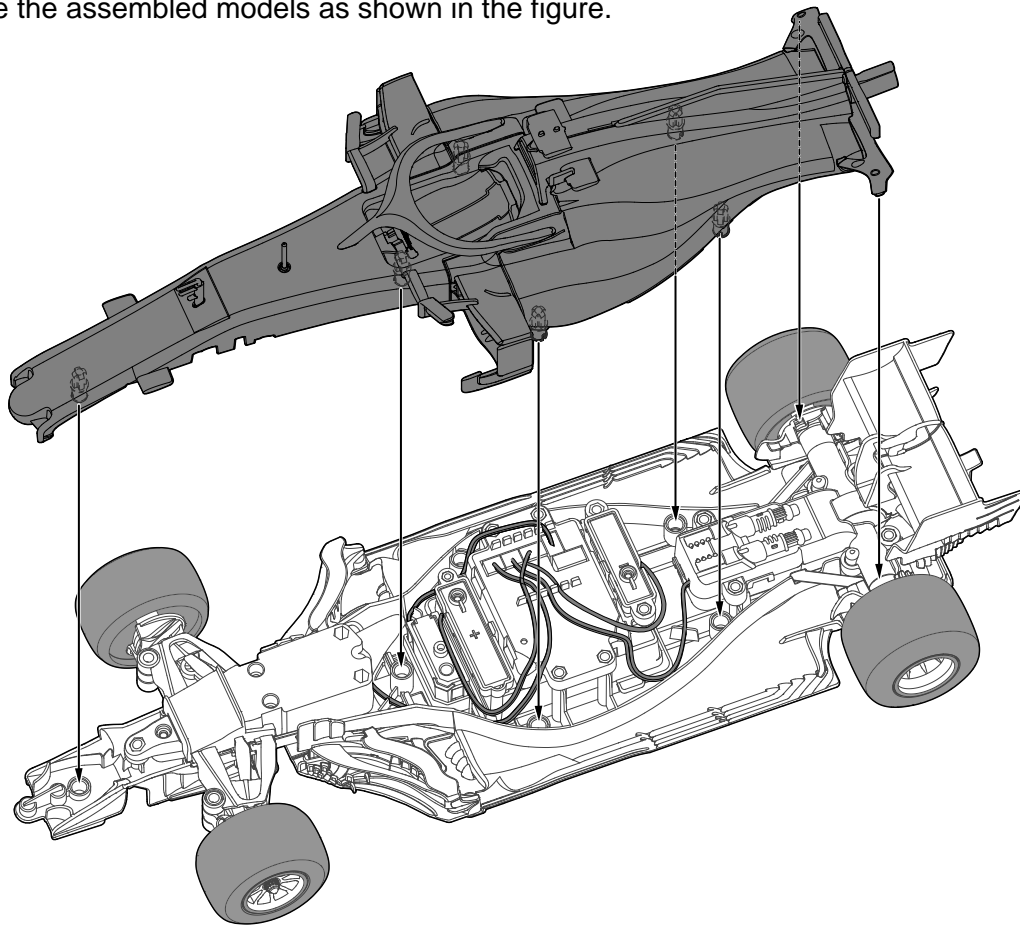
22

Please press the wire into the gap.
Plug in respectively while matching by same colours and same shapes.



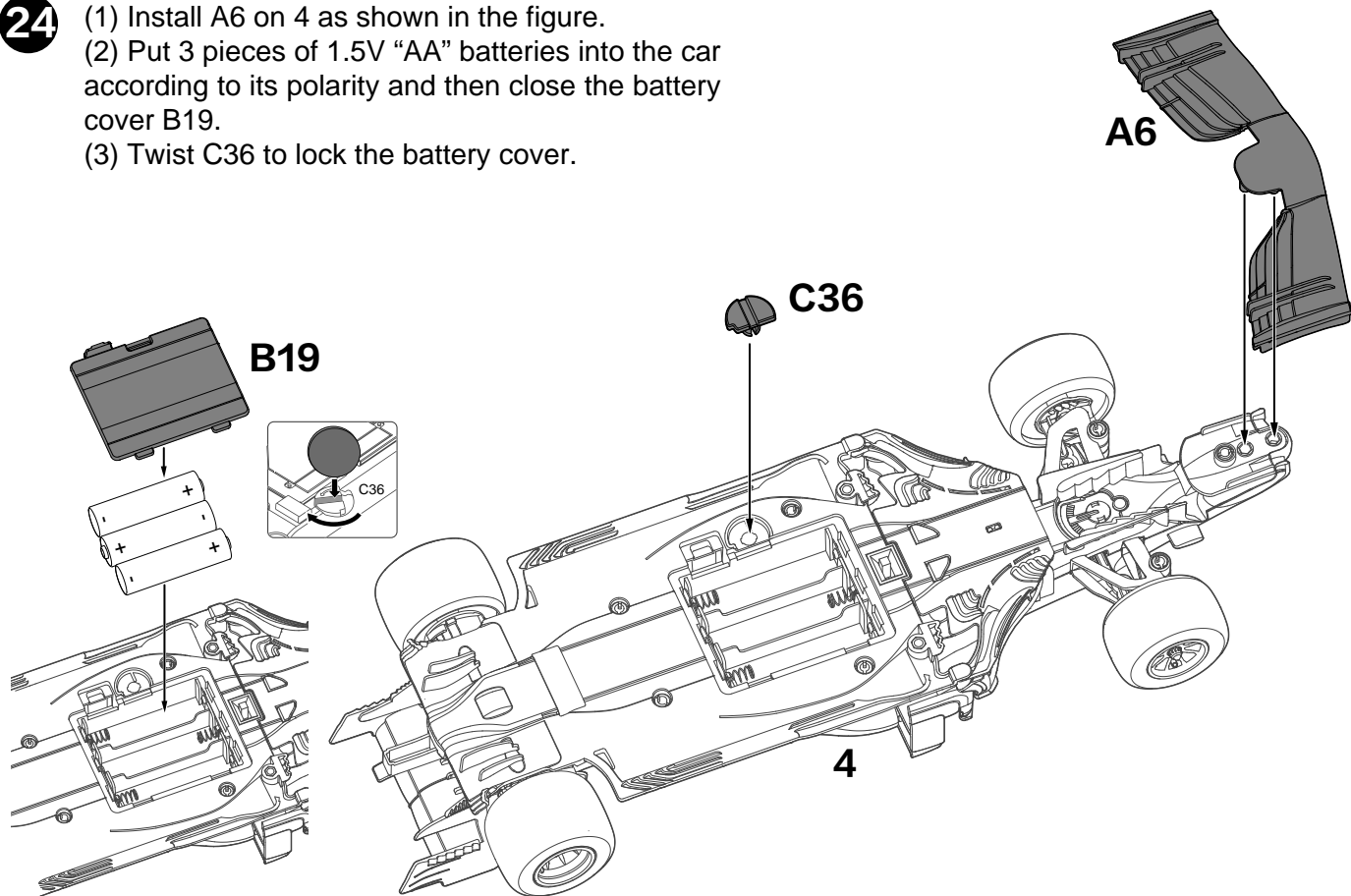
23

Combine the assembled models as shown in the figure.

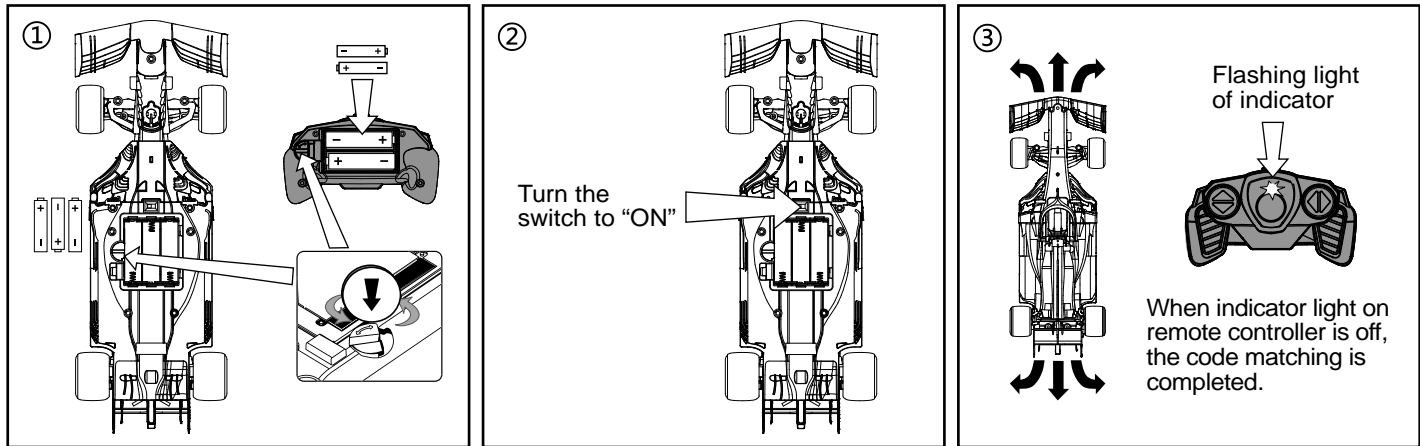


24

- (1) Install A6 on 4 as shown in the figure.
- (2) Put 3 pieces of 1.5V “AA” batteries into the car according to its polarity and then close the battery cover B19.
- (3) Twist C36 to lock the battery cover.



OPERATION GUIDE

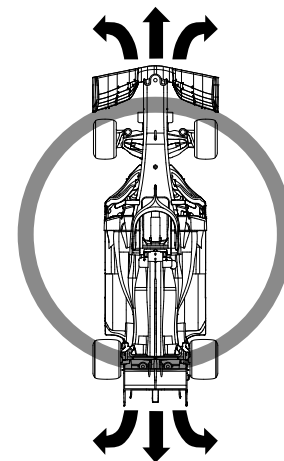
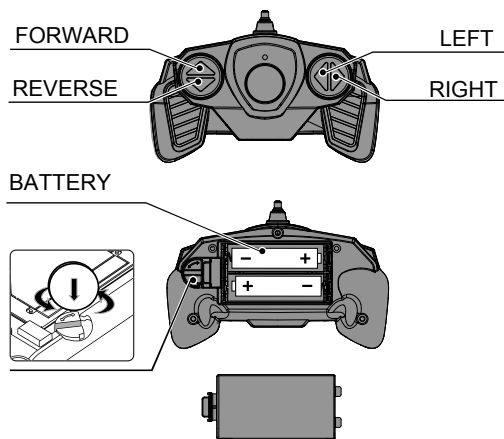
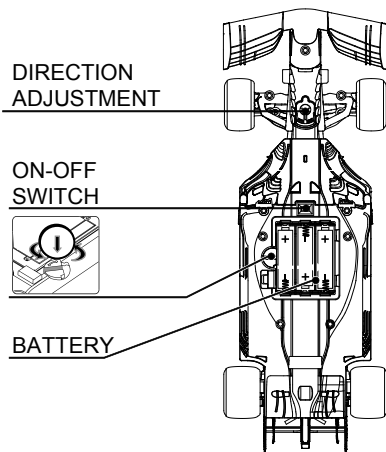


- Use a coin-like tool to twist the knob switch on battery cover to open or close it. Please refer to Figure ①.
- Open battery cover, put 3 pieces of 1.5V “AA” batteries according to the correct polarity into the car, then close the lid and twist the chassis piece to lock the battery cover.
- Remote controller needs to match code with car before each use. The specific steps are as follows:
- Open battery cover, put 2 pieces of 1.5V “AA” batteries according to the correct polarity into the remote controller, then close the lid and twist the chassis piece to lock the battery cover. Turn switch on R/C car to “ON” position, when indicator light on remote control is flashing, it is in the status of code matching, when the flashing indicator light on remote control turns off, which means the code is matched, you can control the car freely. Please refer to Figure ②③.
- 2.4GHz transmitter is compatible to control several model cars at same time without interference, provided that the pairing process is orderly done one by one following above steps. Match the code for the first car according to the steps as mentioned above and keep their power on, then match the code for the second car in the same way, and so forth for the rest of cars.

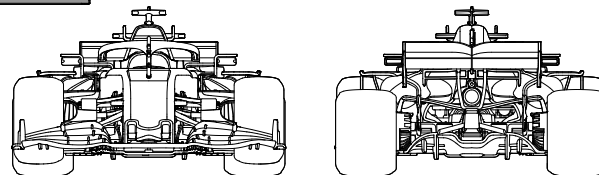
- Please turn off model car after playing.
- Adjust the direction adjustment switch to control the car running in a straight line.
- When battery of remote controller is low, the indicator light on remote controller will be dim, batteries need to be replaced.
- When battery of the car is low, the car will slow down, batteries need to be replaced.
- When it is not in use, please take the batteries out of remote controller and the car.

FEATURES AND FUNCTIONS

This product uses 2.4GHz communication technology, which is compatible for multi-device and multi-user, with fast response speed, high response precision, and strong anti-interference capability.

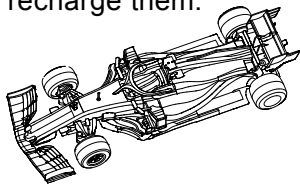


Function: Forward, Reverse, Turn Left, Turn Right,
Feature: Authentic car styling with injection moulded body,
independent suspension system.

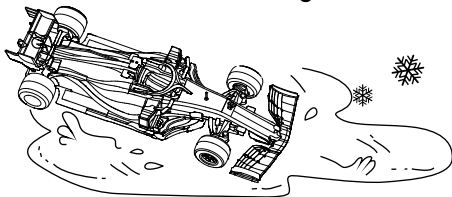


ATTENTION

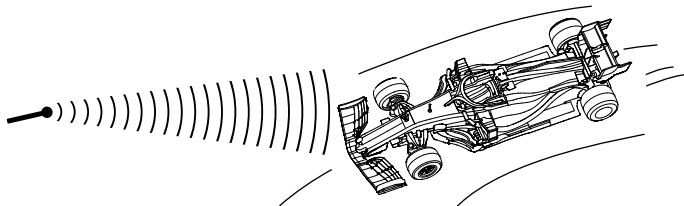
- When your vehicle starts to lose power, it may lose its functions or performance. This indicates that it's time to refresh your batteries or recharge them.



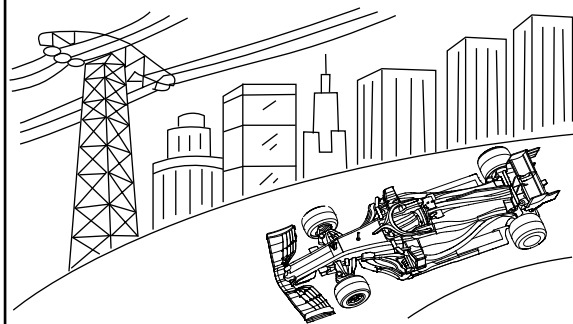
- Don't drive your vehicle in sand, through water or snow.



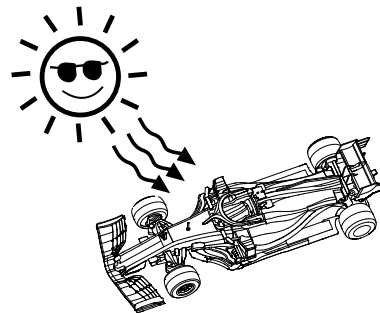
- Point the antenna of the remote control upward to the car, and control the car within the effective range, so as not to affect the play effect.



- Do not operate your car on the streets where people gather or under high voltage wires. Stay safe!



- Don't put your vehicle near heat or in direct sunlight. Always turn switches OFF after operating.



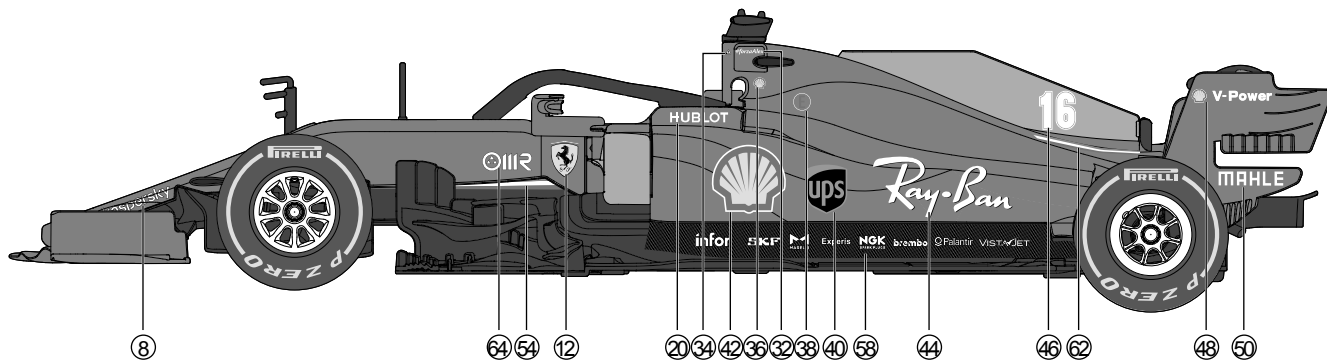
Pictures for reference only, subject to actual product.

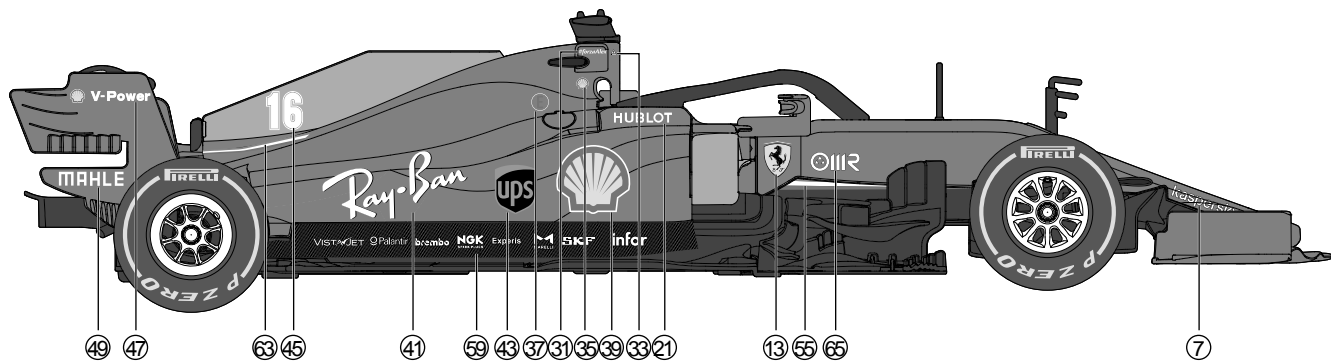
MAINTENANCE

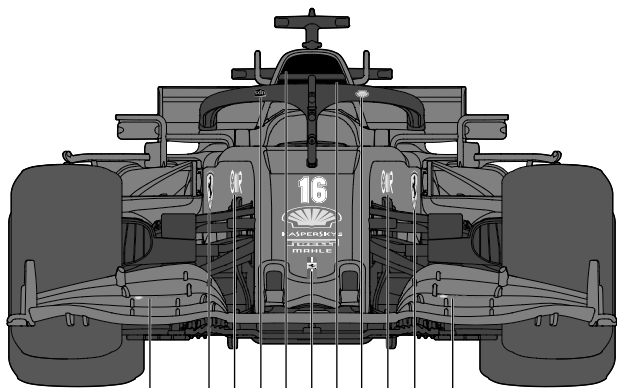
- Remove the batteries when the unit is not in use for long periods of time.
- Clean the vehicle with a soft cloth.
- Avoid being heated or being exposed to strong sunlight.
- Keep dry.
- Regularly examine the toy for any damage to its wires, plug, enclosure and other parts and they must not be used until the damage has been repaired.

BODY LOGO

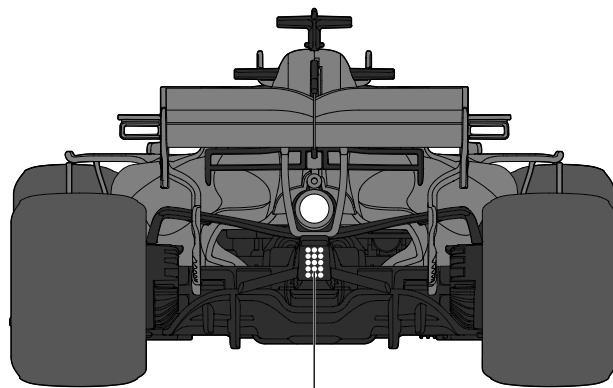
Put the stickers on the corresponding position according to the serial number.



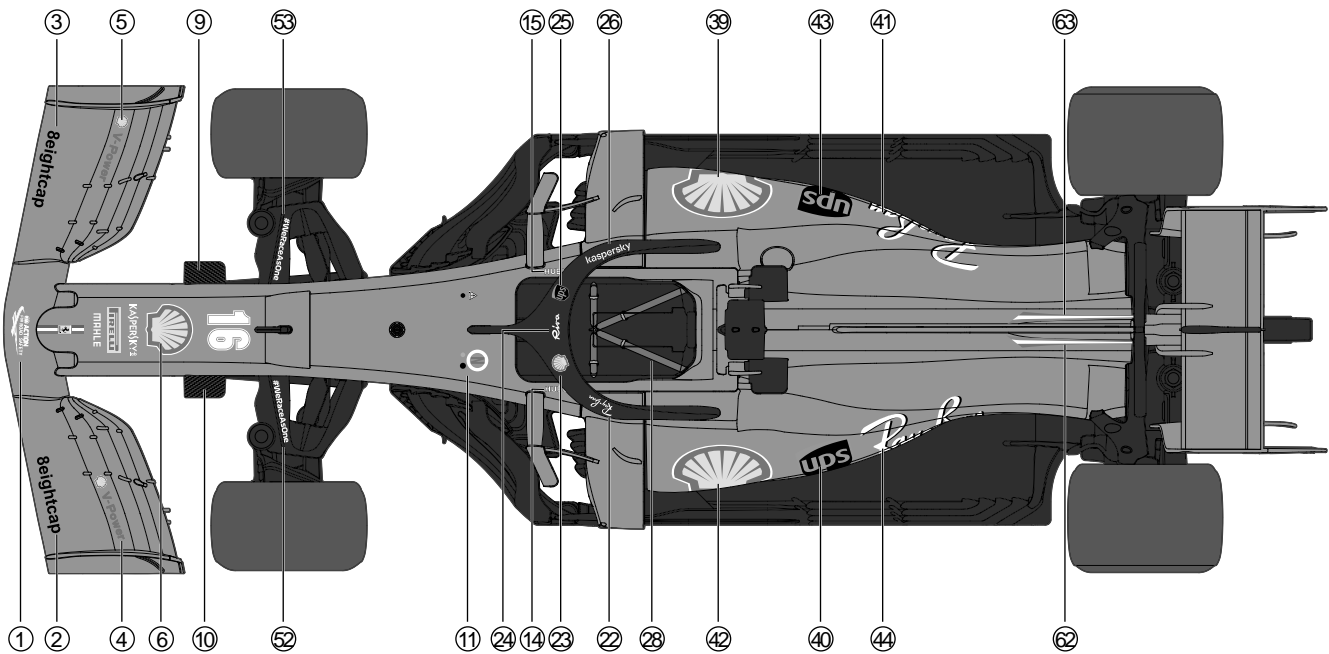




⑤ ⑬ ⑤⑤ ②⑤ ③① ⑥ ②⑧ ②③ ⑤④ ①② ④



⑤①



Frequency bands: 2400MHz to 2483.5MHz
Maximum Transmitting Power (EIRP) : Not more than 10mW.

Applicable age 8 years (96 months) and above.

 **WARNING:**
CHOKING HAZARD-Small parts.
Not for children under 3 years.

 **WARNING:**
The assembly of the product is complex, so it must be
used under adult supervision.

The instruction has to be kept since it contains important information.



Produced under license of Ferrari S.p.A. The name FERRARI, the PRANCING HORSE device, all associated logos and distinctive designs are property of Ferrari S.p.A. The body designs of the Ferrari cars are protected as Ferrari S.p.A. property under design, trademark and trade dress regulations.

Licensee: RASTAR (HK) INDUSTRIAL COMPANY LIMITED
Manufacturer: RASTAR GROUP
Add: Xinghui Industrial Park, Xiadao Road, Shanghai,
Chenghai, Shantou, Guangdong, China.
[Http://www.rastar.com](http://www.rastar.com)