

UTV Stereo

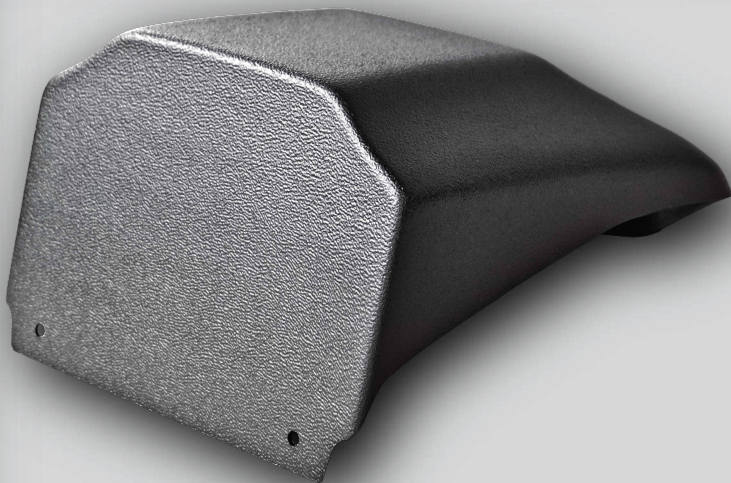
PERFORMANCE AUDIO

Model:
UTVS-X3-HUMT-UP-UNIV

DESIGNED FOR
UTV - POWERSPORTS - MARINE

480.616.2299  UTVSTEREO.COM

UNIVERSAL UPPER
-DISPLAY MOUNT-



CONTENTS:

- Included Parts List
- Installation Instructions

OWNERS MANUAL

FOR MODEL: UTVS-X3-HUMT-UP-UNIV

UNIVERSAL UPPER -DISPLAY MOUNT-

INCLUDED PARTS LIST



(1) UNIVERSAL UPPER
DISPLAY MOUNT



(1) PLASTIC MOUNTING BRACKET



THANK YOU FOR CHOOSING UTV STEREO PRODUCTS

Thank you for choosing UTV Stereo products. Your purchase of this UTV Stereo product for use in your UTV indicates your desire for reliability and performance audio that only comes from UTV Stereo.

UTV Stereo is your premier audio manufacturer. We offer the highest quality products designed for your SXS. Stay one step ahead when you purchase UTV Stereo products.

To take full advantage of the UTV Stereo X3 Universal Upper Display Mount, please read and follow the instructions in this manual.

Designed for high performance audio systems, this mount is built rugged to withstand the elements and has been designed specifically for use in SxS's!

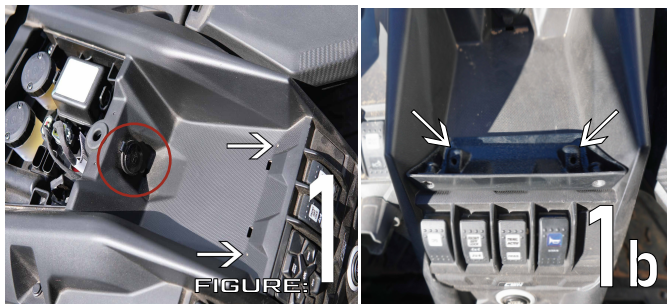
INSTALLATION

Professional installation by an authorized UTV STEREO dealer is highly recommended! Otherwise, the performance of your new gear may not be satisfactory. In the event that you decide to do your own installation, please read and follow this manual very carefully. Failure to do so may compromise the integrity of this product or your vehicle, and possibly void this product's warranty.

X3 UNIVERSAL UPPER DISPLAY MOUNT INSTALLATION

Designed to fit PERFECTLY into center dash location in your vehicle.

INSTALLATION INSTRUCTIONS: UTVS-X3-HUMT-UP-UNIV



- Step 1:** Using the specified mounting area, decide how big your mounting hole needs to be then use a hole saw to make desired cutout into the middle of your mount.
- Step 2:** Install your head unit into the cutout in the mount.
- Step 3:** Remove brake reservoir cover to gain access to rear mounting dimples and remove the auxiliary power outlet.
- Step 4:** To run the wires from the head unit, remove the auxiliary power outlet (Red Circle, Figure #1) then run wires through the hole. You may relocate your auxiliary power outlet to another location in the vehicle.
- Step 5:** Line up the included plastic bracket with the front factory dimples on the dash (White Arrows, Figure #1).
- Step 6:** Secure plastic bracket in place with 2 of the included coarse thread screws and two washers. The dimples are exactly where your screws should be drilled (White Arrows, Figure #1 & 1b).
- Step 7:** Now that the lower bracket is installed, place the upper display mount over the installed plastic bracket. Use the 2 machine screws to secure the front of the upper display mount in place (Figure #2).
- Step 8:** Use the included 2 coarse thread screws and washers to secure the back of the upper display mount to the dash through the two rear dimples (Figure #3).



UTV STEREO

PERFORMANCE AUDIO

WARRANTY

Should your product require service, please consult with the dealer from which it was purchased or contact a local UTV STEREO dealer directly. Units received without an accompanying return authorization number will not be processed. Please contact your UTV Stereo dealer or contact UTV Stereo directly to obtain a return authorization number. Additionally, you must include a copy of your purchase receipt from an authorized UTV Stereo dealer for consideration of an in-warranty service. Units received without a receipt will be held for 30 days. Allowing us time to contact you and obtain a copy of the receipt. After 30 days, all units will be returned. For more information please visit our website.



**FAILURE TO FOLLOW INSTALLATION
INSTRUCTIONS COULD VOID
YOUR WARRANTY.**

UTV STEREO and the UTV STEREO logo are registered trademarks.
All other brand names are trademarks or registered trademarks of their respective owners.
These trademark holders are not affiliated with UTV Stereo.
All rights reserved. Designed in USA.

Copyright© 2023 UTV STEREO

Tel. 480-616-2299
Address: 7561 East Baseline Road Mesa, AZ 85209