

UTV STEREO CAN-AM DEFENDER 2nd BATTERY KIT INSTRUCTIONS

NOTE: It is recommended to use Loctite on all hardware.

Step 1: Disconnect ground wire on stock battery before you start.

Step 2: Hold UTVS Battery Isolator in place and mark with silver sharpie for mounting holes



Step 3: Drill both marks out to 1/4" diameter hole. Then install 2 speed clips as shown.



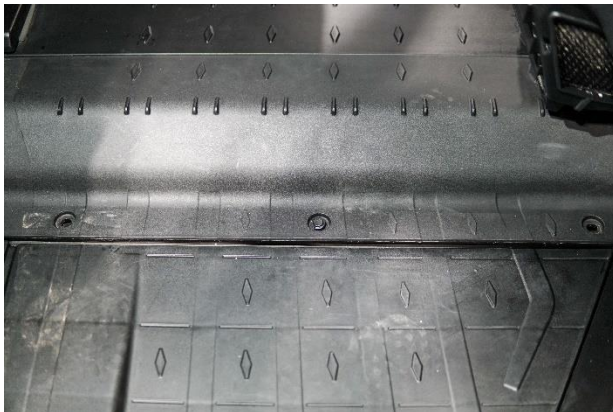
Step 4: Use Supplied bolts to mount the isolator to the plastic, with installed speed clips.



Step 5: Attach ring terminal side of the red/black trigger harness to the battery isolator. The terminals are not polarity specific on the isolator, FYI.



Step 6: Remove center floorboard cover panel



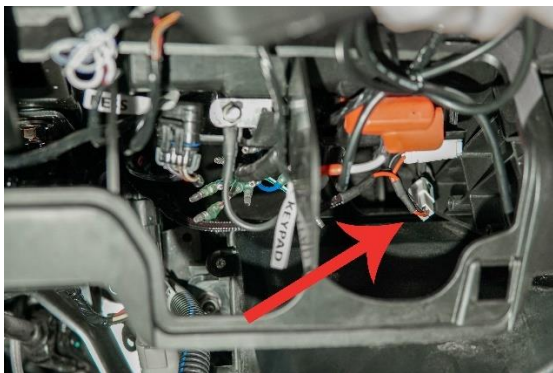
Step 7: Run Trigger wire down center of vehicle toward dash. Make sure to zip tie harness and avoid any heat sources or moving part



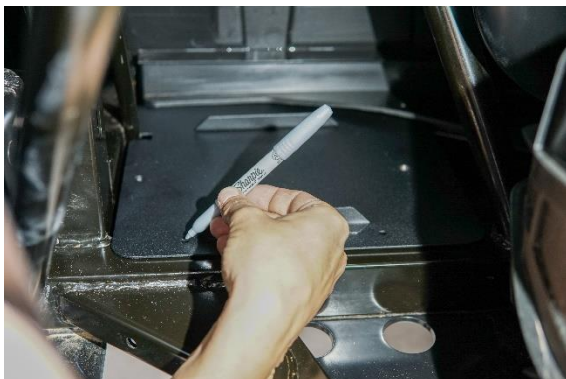
Step 8: Locate OEM white ACC plug. It is located directly behind the 4x4 switch.



Step 8: Plug in Trigger Harness's white pigtail to the OEM white ACC plug. This connection will cause the isolator to click on/off with IGN on/off, which will connect the UTVS battery to the stock battery when the key is in the on position. This can be tested once battery is reconnected.



Step 9: Insert Battery mount in proper position inside Driver's Rear Fender area. Mark 3 hole locations with a silver sharpie.



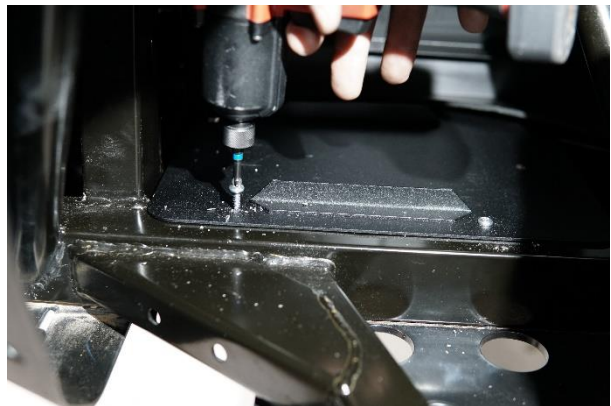
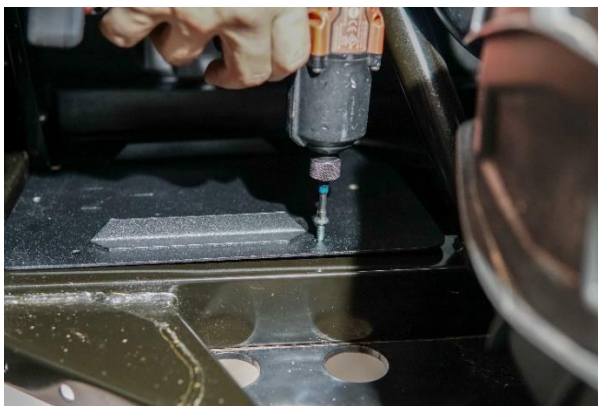
Step 10: Drill back vertical hole to ¼" for insert of nut and bolt.



Step 11: Install single bolt through mount and secure to frame with nut on back side.



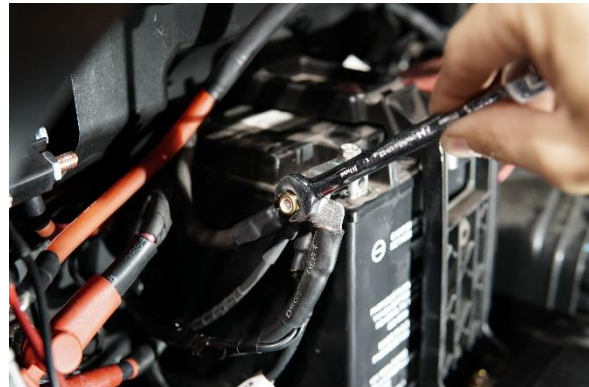
Step 12: Drill in the pair of self-tapping screws to attach the mount to the vehicle as shown.



Step 13: Install UTVS Battery and fasten with battery strap. Attach strap to the mount with supplied bolts. Screw bolts into the mount through pre-installed nutserts.



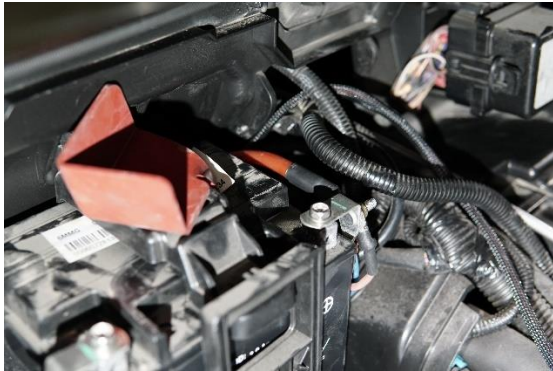
Step 14: Locate the Dual 4awg Battery Cable. Connect the Black side of the Dual 4 awg ground wire to the ground on the OEM Battery as shown. *Make sure to tape off opposite end of Red terminal to avoid any sparking issues.



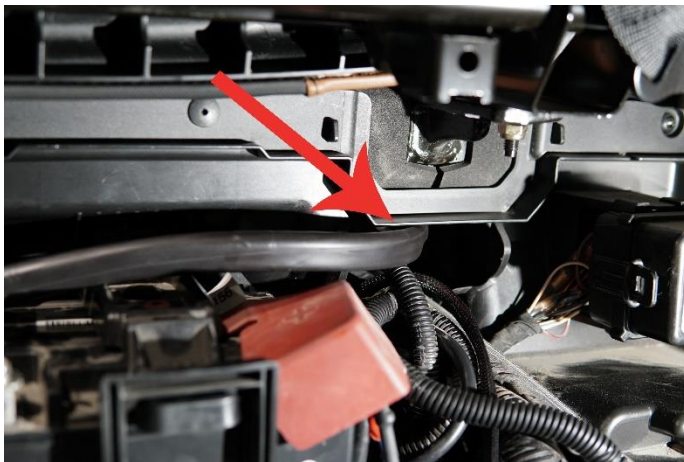
Step 15: Connect the Red side of the Dual 4 awg power wire to one of the larger terminals on the battery isolator as shown (it doesn't matter which side).



Step 16: Using the single Red 4 awg Wire, connect the other large terminal of the isolator to the OEM battery positive post.



Step 17: CAREFULLY route the Dual 4 awg battery Cables to the UTVS 2nd battery. Run cables through this gap behind the stock battery as show. For safety, it is important to run this cable away from heat sources and moving parts. Make sure cable is secure when routing!



Step 18: Use supplied hose clamps and heavy threaded screws to secure the 4 awg battery cable to OEM insert tabs on the back plastic wall in motor compartment area as shown. Install the cable across the motor compartment and secure in safe position with clamps.



Step 18: Connect 4 awg battery cable to UTVS1200 Battery.



You can now reconnect OEM Battery ground post. Turn IGN on, then off to confirm that you are hearing the isolator clicking. If you do not, double check OEM factory ACC fuse. You can connect aftermarket accessories directly to the UTVS1200 battery or the UTVS1200 main power side of the isolator (fused) if you want to draw only from the 2nd battery. Don't forget to always use a battery charger when in storage for optimal performance and life of your battery. Enjoy!

If you have any questions or comments, please call UTV Stereo directly

@ 480-616-2299 or email us at info@utvstereo.com.