



# UTVS AMPLIFIER OWNER'S MANUAL

Models:  
UTVS1000.1D/UTVS125.4D/UTVS1000.5D

### General Features:

- IRS Full Class-D Technology Offers Efficiency & Performance
- Designed Specifically for Powersports, Marine, & Motorcycle
- Top Tuning Controls Access
- Conformal Coated PCB and IPX67 Waterproof to Withstand Outdoor Elements
- Ultra Compact Size For Easy Installations
- Surface Mount Component Technology
- Audio Precision Quality Control Verification
- Stable & Reliable Four Layers PCB Traces Layout
- Power, Protection, & Clipping Led Lights Status Indicator
- Short circuit, Thermal and High/Low Voltage Protection
- Excellent Signal to Noise and FM Noise Rejection

www.utvstereo.com

### AMPLIFIER OWNER'S MANUAL



#### WHERE ARE YOU HEADED?

Thank you for choosing **UTV STEREO** **UTVS** powersport amps! Your choice of **UTV STEREO** **UTVS** powersport amps indicates a desire for high quality music reproduction. **UTV STEREO** **UTVS** powersport amps brings to you over four decades of 12V audio expertise. So whether you are an off-road driving music lover, or a serious 12V audio competitor, **UTV STEREO** **UTVS** powersport amps have the product for you! To take full advantage of the **UTV STEREO** **UTVS** powersport amps gear you have just purchased, please read and follow the instructions in this manual. As with all of our products, professional installation by an authorized **UTV STEREO** **UTVS** powersport amps dealer is highly recommended! Otherwise, the performance of your new gear may not be satisfactory. In addition to the installation services and expertise offered by an authorized **UTV STEREO** dealer, the warranty of this product may be extended when installed by an authorized **UTV STEREO** dealer. Be sure to ask your authorized **UTV STEREO** dealer about whether your product may qualify for an extended warranty. You're headed in the Right Direction with **UTV STEREO** **UTVS** powersport amps!

#### INTRODUCTION

The **UTV STEREO** **UTVS** powersport amplifiers offer high quality audio reproduction for the audiophile and the everyday listener. All models feature fully variable crossovers with 12 dB per octave slopes, allowing you the ability to tailor the sound to best fit the speakers and your listening preferences. **Directed RCA, Speaker & Power Harness** Ensure electrical connections that resist corrosion. **Fully Variable Crossovers** Fully variable crossovers promote installation ease and save the cost of outboard crossovers. Additionally, they may be used in conjunction with outboard passive or active crossovers, depending on the complexity required by the system. The 12 dB per octave slope offers steep roll-off above or below the selected frequency. **Protection Circuitry** Against Overload, Short Circuit, Thermal, Low Voltage, High Voltage, and Reverse Polarity. These Protection features are designed to protect the amplifier from misuse, as well as from common causes of amplifier failure.

#### INSTALLATION

Professional installation by an authorized **UTV STEREO** amps dealer is highly recommended! Otherwise, the performance of your new gear may not be satisfactory. In the event that you decide to do your own installation, please read and follow this manual very carefully. Failure to do so may compromise the integrity of this product, your automobile, and possibly void the product warranty. Amplifiers are generally mounted in the hatch/trunk area of a off-road UTV, ATV, Motorcycle, Marine Boat, and Top Roof, Dash board, under or behind the seat of most Vehicles. Select a location that will provide adequate ventilation for the amplifier. Avoid mounting the amplifier with the fins facing down. The fins should be facing up, either vertically or horizontally. Secure the amplifier with the screws provided.

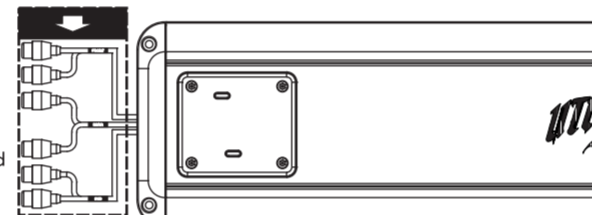
#### START!

Before securing the amplifier, inspect the mounting location carefully to ensure that you do not drill into or damage any electrical, hydraulic, fluid, or fuel lines.

#### Input Section

Because of the wide range of head unit output configurations, all **UTV STEREO** **UTVS** powersport amps have an adjustable input sensitivity of "Gain". The gain is not a volume or a power limiting control like a throttle. It makes the amp more sensitive to input from the stereo. With the gain up, the amp will reach full output at a lower volume setting on the deck. At higher gain settings the amp also becomes more more sensitive to noise from the vehicle's electrical system. Try to run the gain at the lowest setting possible for your system.

There is no correct gain setting. Because speakers require different power demands to reach the same output, the gains most often need to be used to compensate for these differences. If you tried to set all the gains at half way you would probably find the system does not sound very good. Using good judgment and listening carefully to each speaker is still the best way to tune a system.



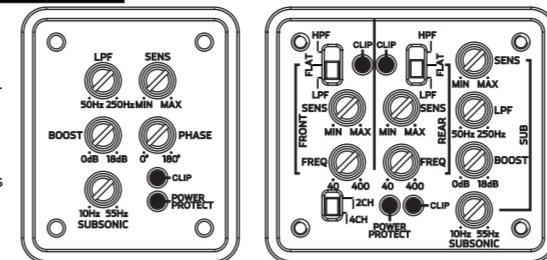
www.utvstereo.com

### AMPLIFIER OWNER'S MANUAL



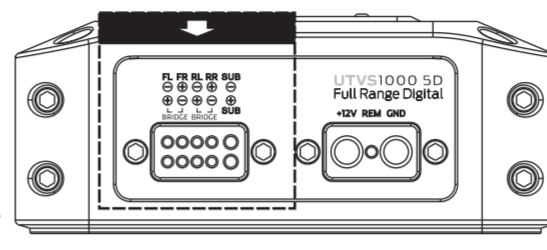
#### CROSSOVER CONTROLS

A crossover is a device that removes unwanted frequencies from a speaker or amplifier. A tweeter can easily be destroyed by bass notes if they are not filtered out. Likewise a subwoofer will not sound natural if it is playing midrange notes. A crossover removes these sounds from the speaker. As you might guess, careful adjustment is needed to ensure that all the speakers are playing the right sounds and that you are left with no "holes" or low spots in the frequency response. **Mounting screws for control cover must be installed to protect amplifier from internal water and dust damage. Warranty void if screws are not installed!**



#### SPEAKER OUTPUTS

This amplifier is a multi channel amplifier design. Meaning it has more than one channel of speaker outputs. It is equipped with sealed terminals at the amplifier. Use external harness plugs for all connections. It is important to make proper connections when connecting wires to the harness. Make sure connections are adequate. They must be properly crimped and sealed for protection. If the wires ever come in contact with each other the amplifier will go into protection. **Know your total ohm load before you make any connections.**



#### INSTALLATION INSTRUCTIONS

1. Before you start disconnect the negative cable from the car battery. Tape up the end so it is isolated from the battery.
2. Run an appropriate gauge wire from the battery to the amplifier. Plan this part of the installation carefully. This cable will carry very high current. If it should short to the body and it is not properly fused it could catch fire.
3. Connect the power wire to the battery using a fuse capable of the total current load of all amplifiers connected. **Don't install the fuse yet.** Wait until the end. Locate the fuse as close as possible to the battery. If the fuse is further than 18 inches(wire length)from the battery you should reevaluate the wire and fuse placement.
4. Find the closest clear metal area to the amp for a ground. sand, grind or scrape all paint and undercoating from the body and screw the ground securely in place. It is advisable to test the ground with an ohm meter between the ground cable and the negative battery cable to insure a good low resistance connection. Some alloys used in modern cars do not offer the best ground. If you believe this is the case consult with the vehicle manufacturer.
5. Run the speaker wire to the speakers. It is advised that you leave some extra wire at this point. You can't clean it up later.
6. If you haven't already done so, mount the amp now.
7. Connect the power and ground to the amplifier.
8. Only after this step should you install the fuse at the battery.
9. Connect the remote wire from the head unit to the amplifier. Now is a good time to turn on the amp for the first time. Make sure it turns on properly and does not go into protection.
10. Connect the speaker wires to the amp and speakers (make sure the amp is off first). Make sure the polarity (+ and -) is correct.
11. Double check the amplifier controls at this time. Make sure everything is set correctly for your system.
12. Now you're ready to play it for the first time. It is best to leave the gain all the way down at first. Start with the head unit volume low and work your way up.
13. Now you can tune the amp. Take your time and make only one adjustment at a time. It may take some time to get the system fully adjusted. During this time the amp is drawing current from the battery. You should check the battery voltage from time to time and re-charge it if it gets, that's it. You're done. Now have fun.

www.utvstereo.com

### AMPLIFIER OWNER'S MANUAL



#### SPECIFICATIONS

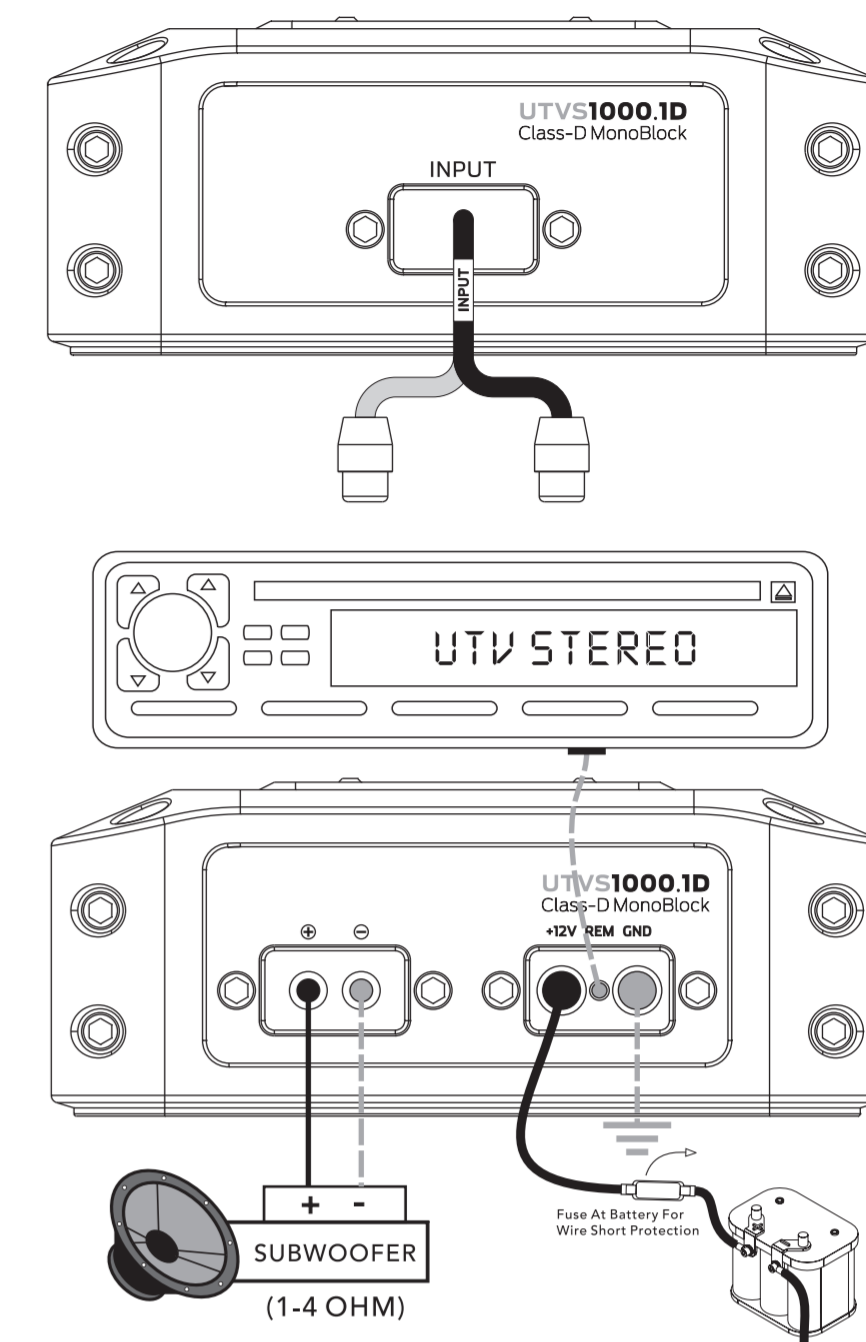
MODEL NO.	UTVS125.4D	UTVS1000.1D	UTVS1000.5D
Circuit Topology	Full Range Class-D	Mono Class-D	Full Range Class-D
RMS POWER OUTPUT AT 1 Ω	N/A	1000Wx1CH	N/A
RMS POWER OUTPUT AT 2 Ω	200Wx4CH	700Wx1CH	125Wx4CH+500W
RMS POWER OUTPUT AT 4 Ω BRIDGED	400Wx2CH	N/A	250Wx2CH(F&R CHs)
TOTAL HARMONIC DISTORTION	<0.3%	<0.3%	<0.3%
S/N RATIO REF 1W AT 4Ω	>90dB	>90dB	>90dB
GAIN RANGE	0.3-10V	0.3-10V	0.3-10V
CROSSOVER RANGE	40-400Hz	LPF:50-250Hz	HPF:40-400Hz(F&R CHs) LPF:50-250Hz(SUB)
PER OCTAVE SLOPES	12dB	24dB	F&R CHs:12dB SUB CH:24dB
FREQUENCY RANGE	20-20KHz	20-500Hz	20-20KHz
TURN ON MODE	REM	REM	REM
INPUT CONFIG	2CH/4CH	N/A	2CH/4CH
REMOTE CONTROLLER	N/A	YES	YES
IP WATERPROOF RATING	IPX67	IPX67	IPX67
EMI/FREQUENCY COMPLIANT	YES	YES	YES
APPLICATIONS	UTV/ATV MOTORCYCLE/MARINE	UTV/ATV MOTORCYCLE/MARINE	UTV/ATV MOTORCYCLE/MARINE
DIMENSIONS(INCH)	289x110x44.2 11.4"x4.33"x1.74"	289x110x44.2 11.4"x4.33"x1.74"	314x110x44.2 12.36"x4.33"x1.74"

www.utvstereo.com

### AMPLIFIER OWNER'S MANUAL



#### INSTALLATION(UTVS1000.1D)

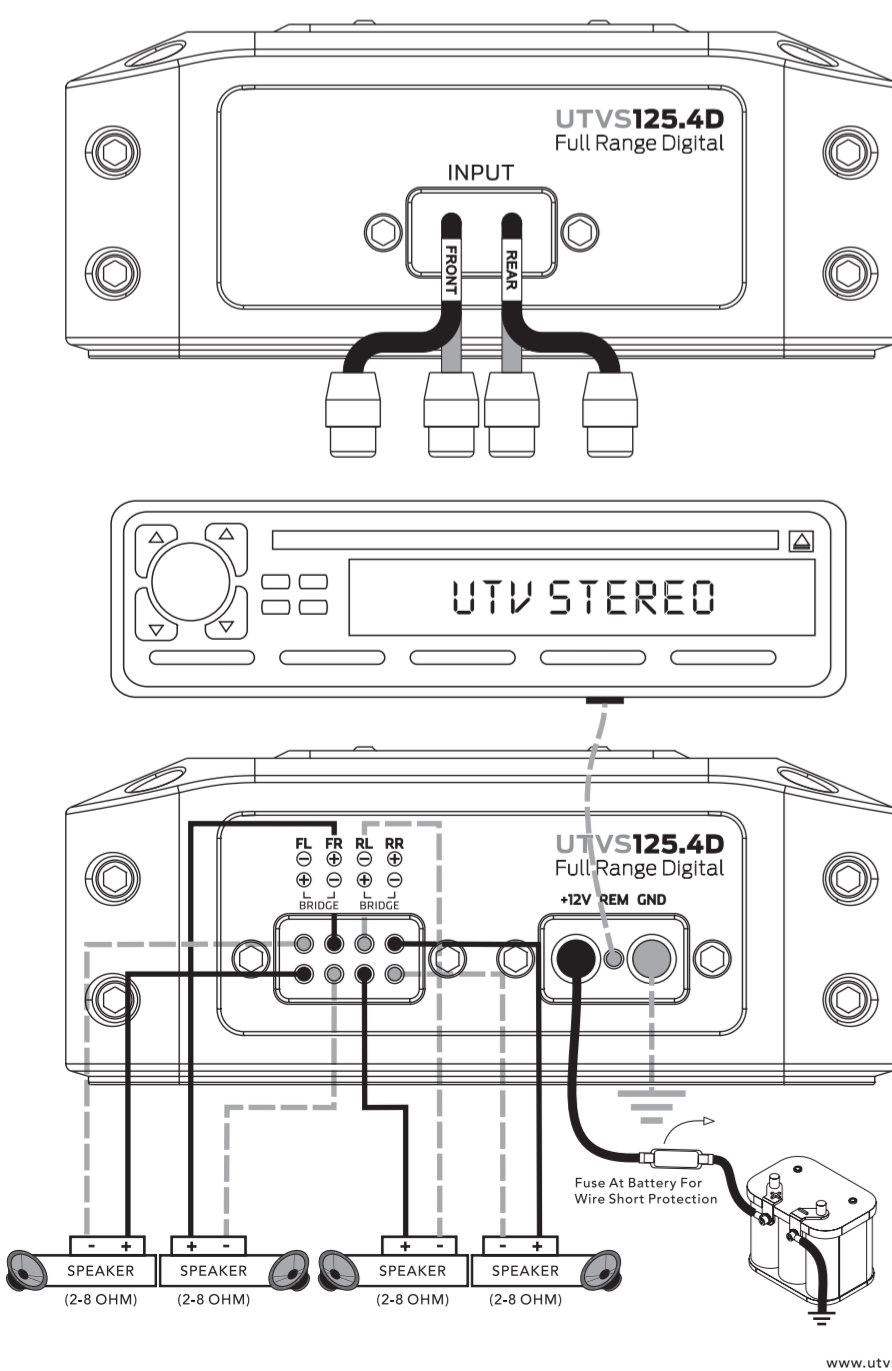


www.utvstereo.com

### AMPLIFIER OWNER'S MANUAL



#### NORMAL INSTALLATION(UTVS125.4D)

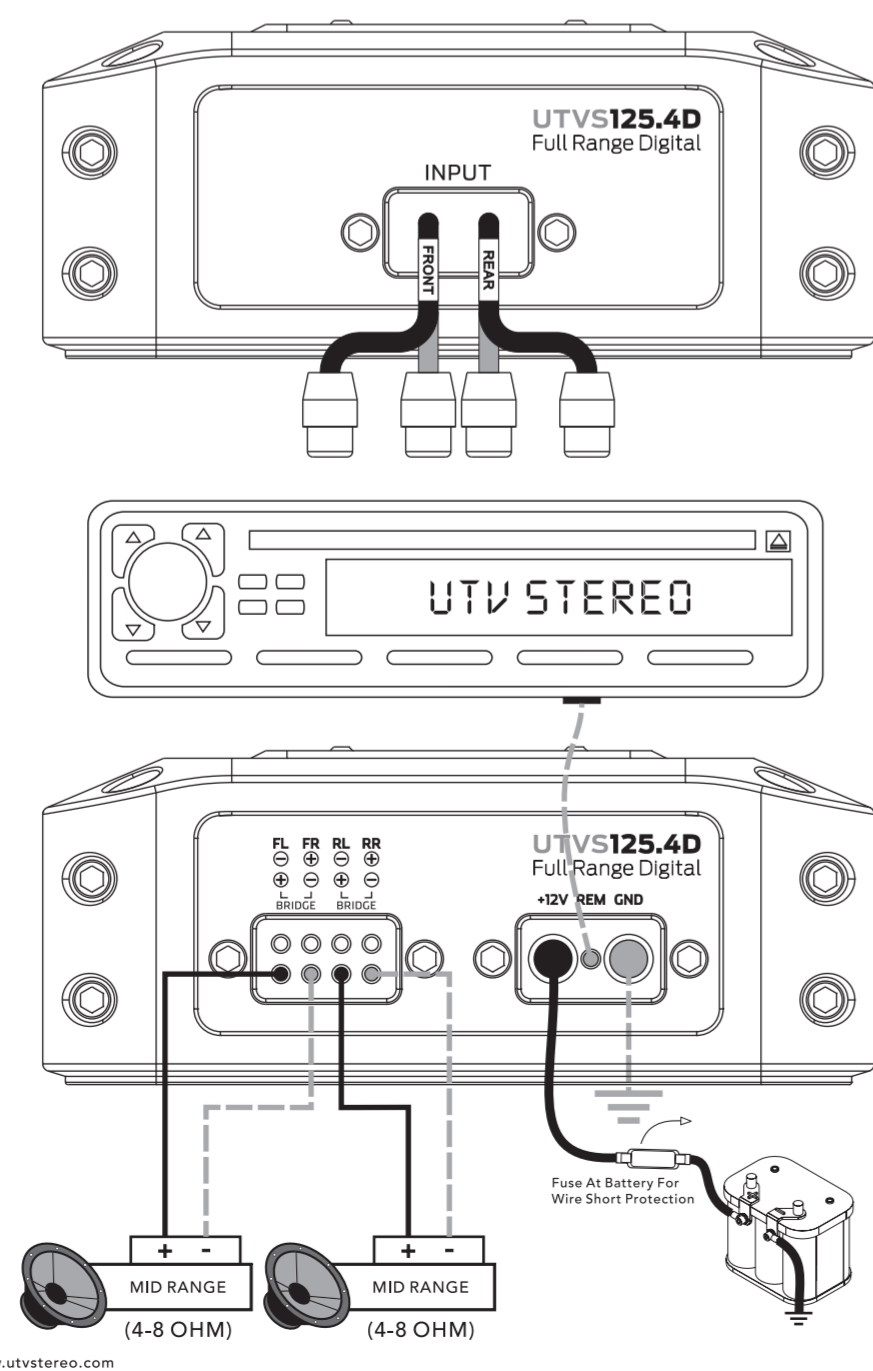


www.utvstereo.com

### AMPLIFIER OWNER'S MANUAL



#### BRIDGE INSTALLATION(UTVS125.4D)

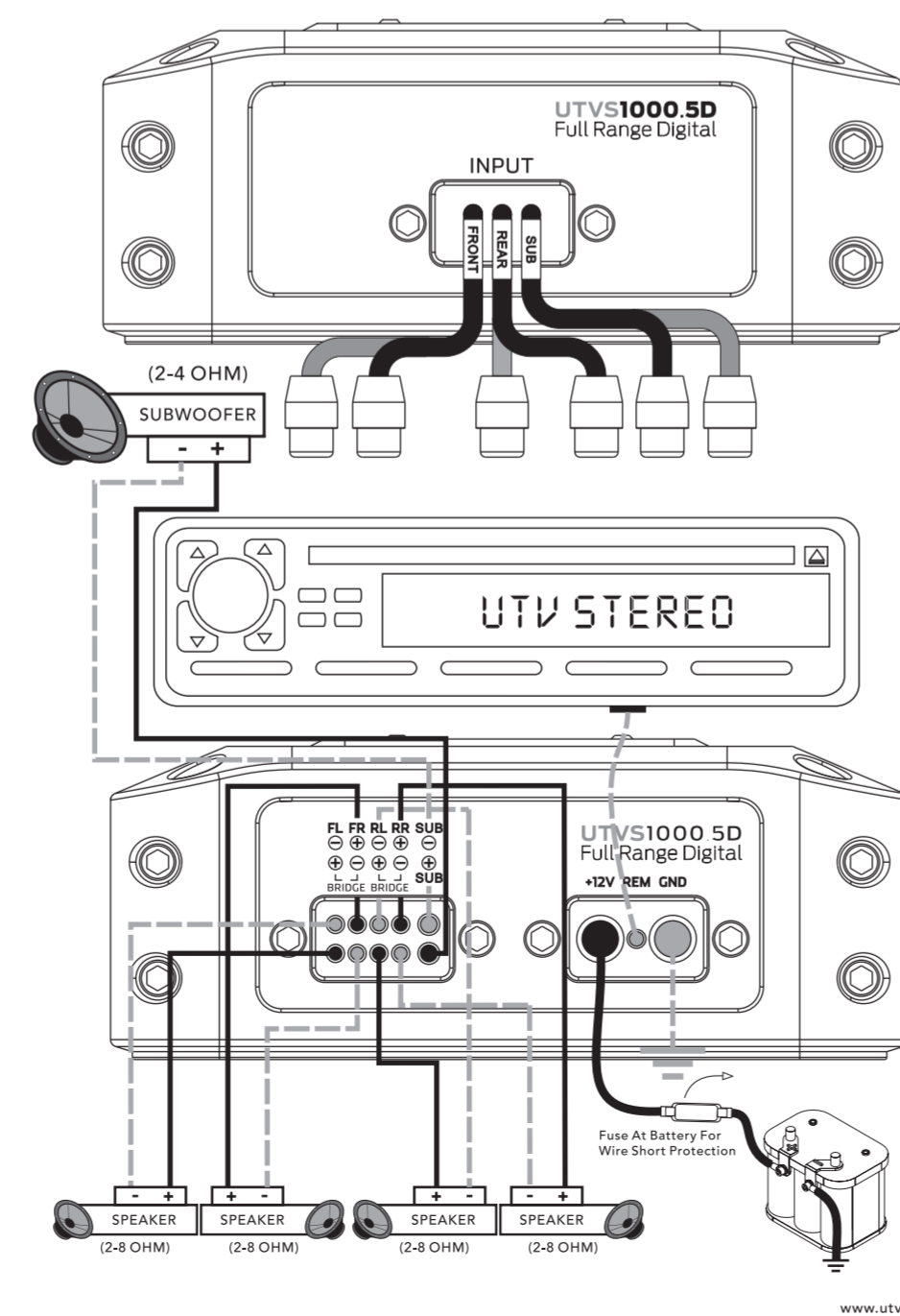


www.utvstereo.com

### AMPLIFIER OWNER'S MANUAL



#### NORMAL INSTALLATION(UTVS1000.5D)

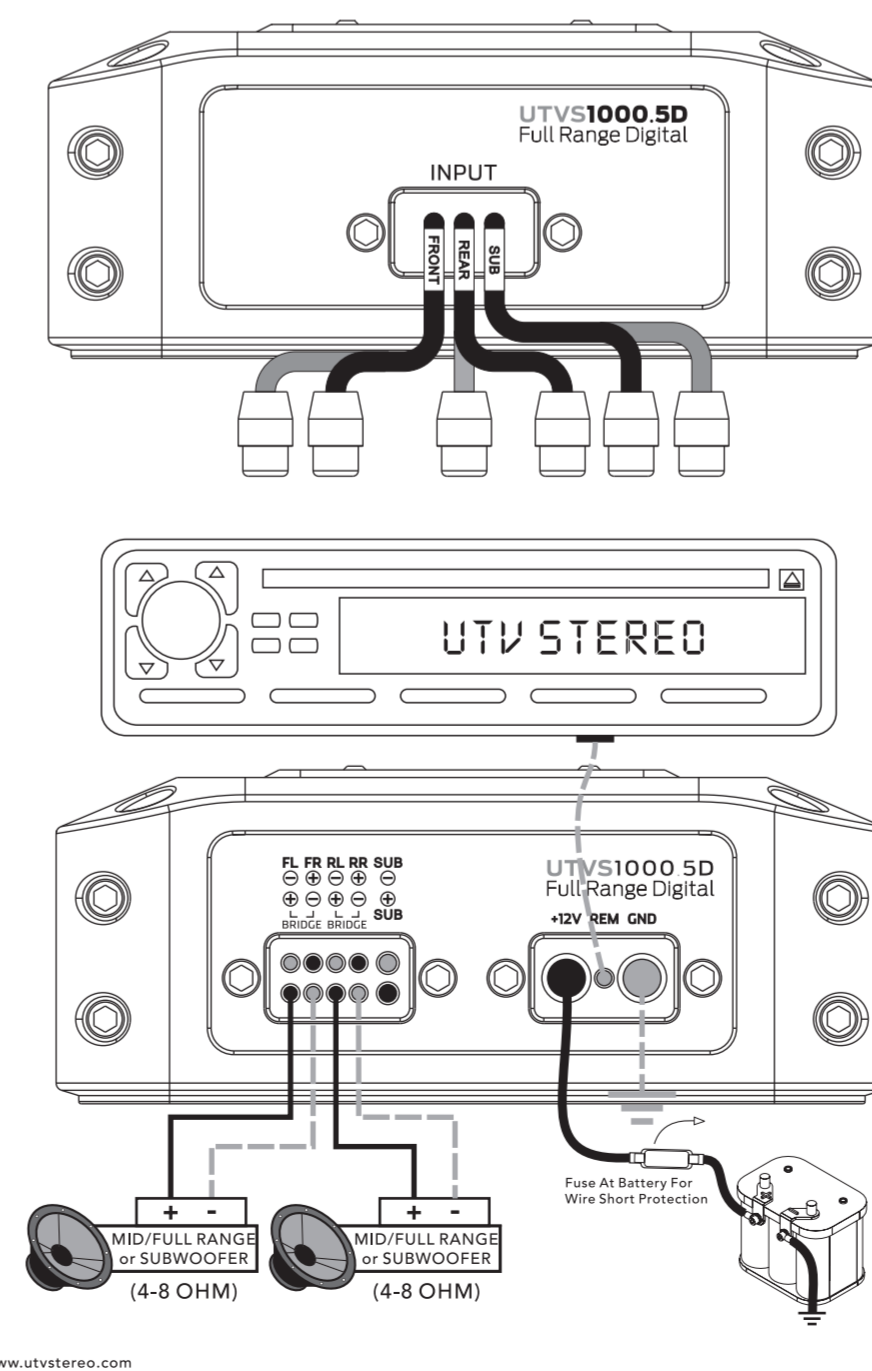


www.utvstereo.com

### AMPLIFIER OWNER'S MANUAL



#### BRIDGE INSTALLATION(UTVS1000.5D)



www.utvstereo.com

### AMPLIFIER OWNER'S MANUAL



#### WARRANTY

**Should your amplifier require service** Please consult with the dealer from which it was purchased, or contact **UTV STEREO** Local Dealer. Do not attempt to return your amplifier directly to us without first calling for a Return Authorization Number. Units received without an accompanying Return Authorization Number will be processed more slowly. Additionally, you must include a copy of your purchase receipt from an authorized dealer for consideration of in-warranty service; otherwise repair charges will apply. Units received without a receipt will be held for 30 days, allowing us time to contact you and obtain a copy of the receipt. After 30 days, all units will be returned. **Mounting screws for control cover must be installed to protect amplifier from internal water and dust damage. Warranty void if screws are not installed!**

www.utvstereo.com