

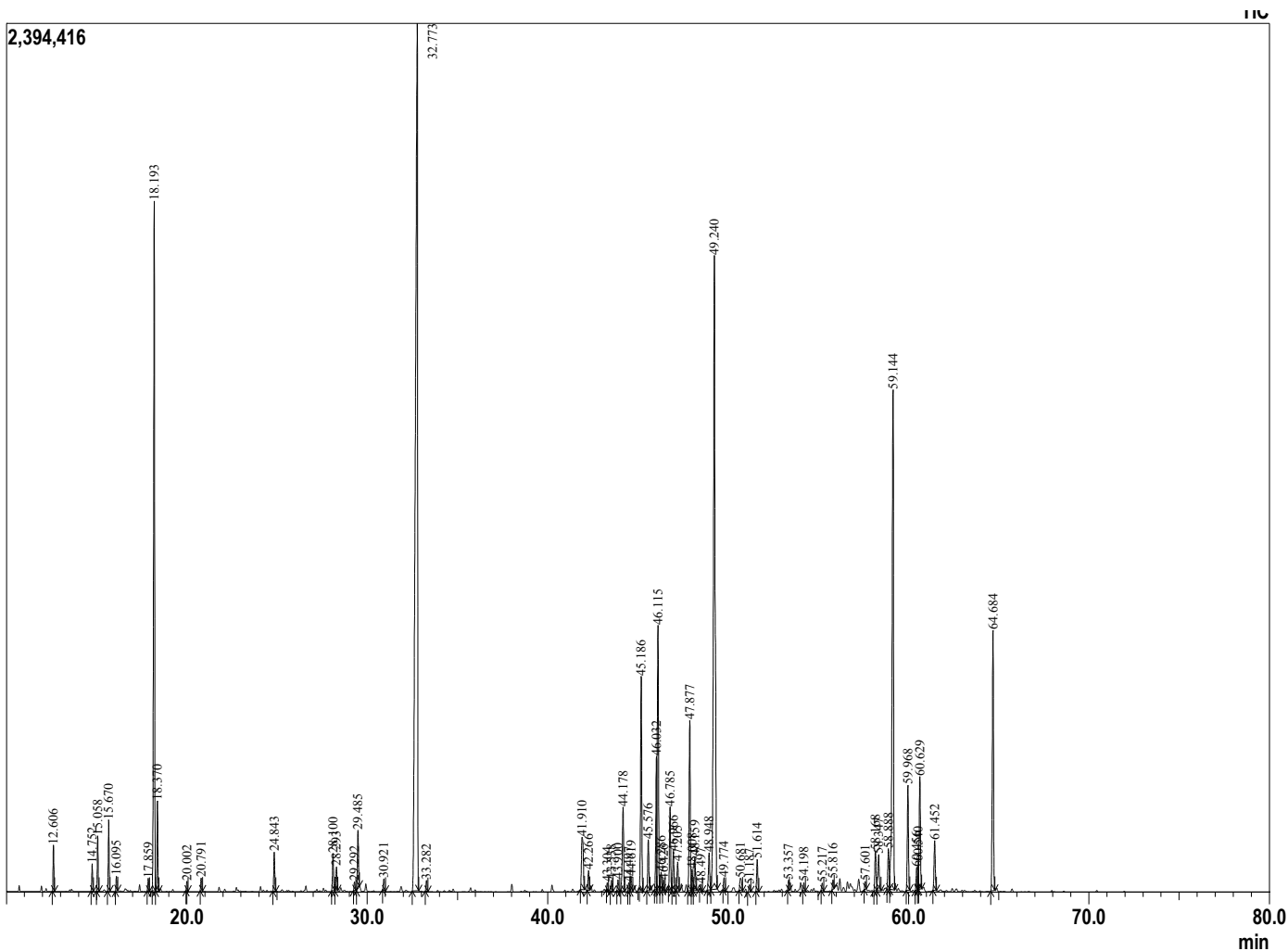
### Sample Information

Analyzed by : Dr. Prabodh Satyal  
 Analyzed : 12/17/2018 11:23:51 PM  
 Sample Type : Essential Oil  
 Sample Name : Tranquility  
 Lot# : Gurunanda  
 Injection Volume : 0.10



### Peak Report TIC

R.Time	Name	Area%
12.606	Pinene <alpha>	0.47
14.752	Sabinene	0.30
15.058	Pinene <beta>	0.62
15.670	Myrcene	0.80
16.095	Octanol<3->	0.16
17.859	Cymene<para>	0.15
18.193	Limonene	9.71
18.370	1,8-cineole	1.06
20.002	Terpinene<gamma>	0.11
20.791	Sabinene hydrate<cis->	0.16
24.843	4-Acetyl-1-methylcyclohexene	0.51
28.100	Menthol	0.53
28.293	Terpinen-4-ol	0.33
29.292	Terpineol<alpha>	0.12
29.485	Dihydro carvone<cis->	0.85
30.921	Carveol<trans->	0.17
32.773	Carvone	25.34
33.282	Piperitone	0.15
41.910	Bourbonene <beta>	1.29
42.266	Elemene <beta>	0.29
43.304	Vestitenone Z	0.09
43.538	Longifolene	0.17
43.900	Cycloseychellene	0.17
44.178	Caryophyllene <trans>	1.50
44.497	Himachala-2,4-diene	0.12
44.619	Dictamnol	0.22
45.186	Guaiene <alpha>	3.29
45.576	Vestitenone	0.76
46.032	Seychellene	1.78
46.115	Himachalene <alpha>	4.37
46.286	Farnesene<(E)-beta>	0.25
46.426	Humulene <alpha>	0.14
46.785	Patchoulene <alpha>	1.26
46.966	Caryophyllene<9-epi-(E)->	0.64
47.205	Caryophyllene<9-epi> isomer	0.46
47.877	Cadina-1(6),4-diene <trans>	2.72
48.008	Gemacrene D	0.32
48.159	Himachala-1,4-diene <11aH>	0.54
48.497	Selinene <beta>	0.09
48.948	Aciphyllene	0.64
49.240	Himachalene <beta>	14.71
49.774	Himachalene<alpha-dehydro-ar>	0.19
50.681	Himachalene<gamma-dehydro-ar>	0.30
51.187	Vetivenene <gamma>	0.12
51.614	Bisabolene <trans-alpha>	0.47
53.357	D Norpatchoulenol	0.16
54.198	Spathulenol	0.12
55.217	Longiborneol	0.12
55.816	Himachalene oxide <beta>	0.14
57.601	Acorenon<alpha>	0.11
58.168	Himachalol<beta>	0.69
58.347	Pogostol	0.73
58.888	Himachalol<allo>	0.69
59.144	Patchouli alcohol	9.69
59.968	Atlantone<Z-gamma>	1.60
60.456	Deodarone(4R,8R)	0.36
60.540	Deodarone(4R,8S)	0.33
60.629	Atlantone<E-gamma>	1.84
61.452	Atlantone<Z-alpha>	0.82
64.684	Atlantone <E-alpha>	4.20
		100.00



Comments:  
 The analysis of this Tranquility blend sample meets the expected chemical profile of pure and natural blend of essential oils.

Copyright © 2018 by Aromatic Plant Research Center (APRC). All rights reserved.  
 The information contained in this document may not be used, published or redistributed, including online, without the prior written consent of APRC.

Reviewed by: Ambika Poudel