

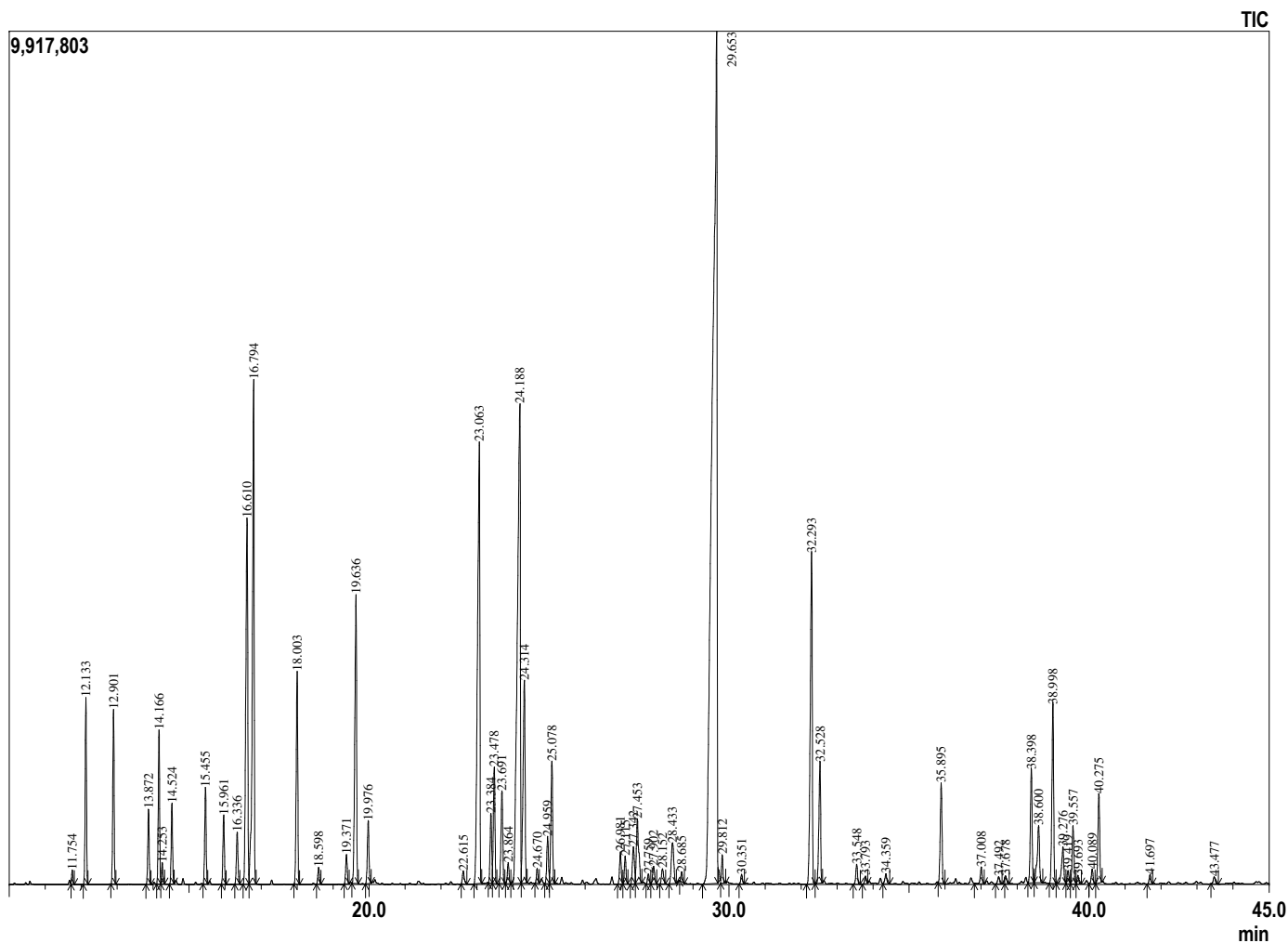
Sample Information

Analyzed by : Dr. Prabodh Satyal
 Analyzed : 7/23/2019 11:51:08 AM
 Sample Type : Essential Oil
 Sample Name : Stomach Blend
 Company Name : Gurunanda
 Lot# : NA
 Injection Volume : 0.30



Peak Report TIC

R.Time	Name	Area%
11.754	Thujene <alpha>	0.12
12.133	Pinene <alpha>	1.70
12.901	Camphene	1.66
13.872	Sabinene	0.73
14.166	Pinene <beta>	1.47
14.253	Hept-5-en-2-one <6-methyl->	0.19
14.524	Myrcene	0.76
15.455	Phellandrene <alpha>	0.95
15.961	Terpinene <alpha>	0.69
16.336	Cymene<para->	0.56
16.610	Limonene	4.96
16.794	Cineole <1.8>	6.21
18.003	Terpinene <gamma>	2.31
18.598	Sabinene hydrate <cis>	0.18
19.371	Terpinolene	0.33
19.636	Fenchone	3.50
19.976	Linalool	0.68
22.615	Camphor	0.16
23.063	Menthone	7.13
23.384	Menthofuran	0.78
23.478	Isomenthone	1.26
23.691	Neomenthol	1.11
23.864	Borneol	0.24
24.188	Menthol	9.81
24.314	Terpinen-4-ol	2.83
24.670	Menthol <iso>	0.15
24.959	Terpineol <alpha>	0.55
25.078	Methyl chavicol	1.45
26.981	Neral	0.37
27.115	Pulegone	0.31
27.342	Cuminal	0.51
27.453	Linalyl acetate	1.03
27.759	Anethole<Z->	0.12
27.902	Piperitone+Anisaldehyde-p	0.24
28.152	Decenal <2E>	0.22
28.433	Geranial	0.71
28.685	Menthyl acetate <neo>	0.11
29.653	Anethole <trans>	27.94
29.812	Terpinene-7-al <gamma>	0.28
30.351	Menthyl acetate <iso->	0.11
32.293	Terpinyl acetate <alpha>	4.58
32.528	Eugenol	1.47
33.548	Geranyl acetate	0.24
33.793	Copaene <alpha>	0.08
34.359	Elemene <beta>	0.13
35.895	Caryophyllene <beta>	1.20
37.008	Farnesene <(E)-beta->	0.20
37.492	Humulene <alpha>	0.09
37.678	Alloaromadendrene	0.09
38.398	Curcumenone <alpha>	1.36
38.600	Germacrene D	0.92
38.998	Zingiberene<alpha>	2.19
39.276	Farnesene <(E,E)alpha>	0.57
39.419	Murolene <alpha>	0.17
39.557	Bisabolene <beta>	0.71
39.693	Eugenol <acetate>	0.10
40.089	Cadinene <delta>	0.17
40.275	Sesquiphellandrene <beta>	1.07
41.697	Nerolidol <trans>	0.11
43.477	Viridiflorol	0.10
		100.00



Comments:
 The analysis of this Stomach blend sample meets the expected chemical profile of pure and natural blend of essential oils.

Copyright © 2019 by Aromatic Plant Research Center (APRC). All rights reserved.
 The information contained in this document may not be used, published or redistributed, including online, without the prior written consent of APRC.

Reviewed by: Ambika Poudel