

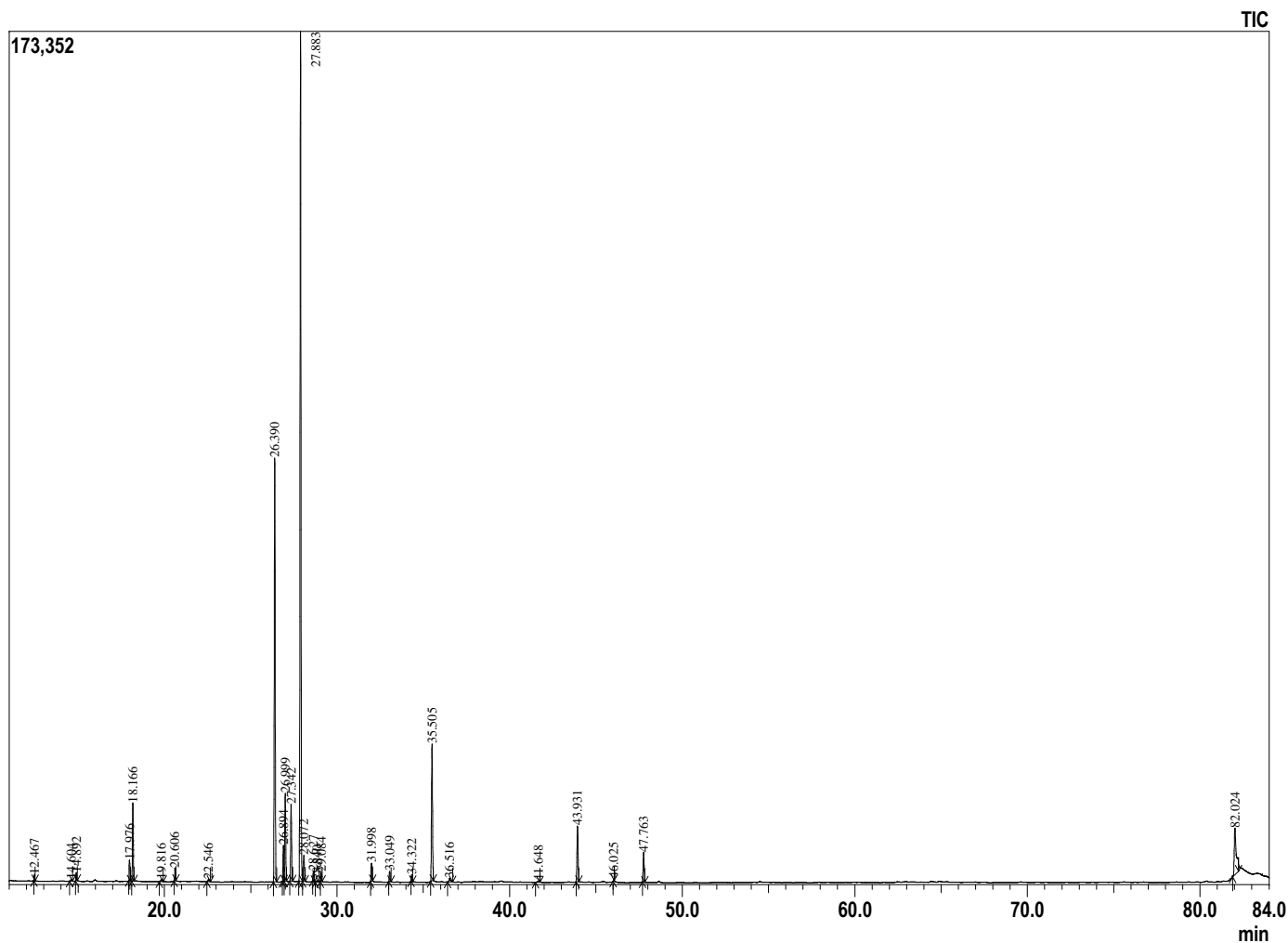
Sample Information



Analyzed by : Dr. Prabodh Satyal
 Analyzed : 7/24/2019 3:08:16 AM
 Sample Type : Essential Oil
 Sample Name : Peppermint Spray
 Company Name : Gurunanda
 Lot# : NA
 Injection Volume : 0.30

Peak Report TIC

R.Time	Name	Area%
12.467	Pinene<alpha->	0.16
14.604	Sabinene	0.08
14.892	Pinene <beta->	0.27
17.976	Limonene	0.85
18.166	Cineole <1.8>	3.57
19.816	Terpinene<gamma->	0.14
20.606	Sabinene hydrate <cis>	0.44
22.546	Linalool	0.14
26.390	Menthone	20.98
26.894	Menthofuran	1.69
26.999	Isomenthone	4.25
27.342	Neomenthol	3.97
27.883	Menthol	41.77
28.072	Terpinen-4-ol	1.47
28.627	Menthol <iso>	0.40
28.840	Menthol<neoiso>	0.12
29.084	Terpineol <alpha>	0.36
31.998	Pulegone	0.90
33.049	Piperitone	0.43
34.322	Menthyl acetate <neo>	0.27
35.505	Menthyl acetate	7.39
36.516	Menthyl acetate <iso->	0.24
41.648	Bourbonene-beta	0.11
43.931	Caryophyllene <beta>	3.22
46.025	Farnesene <E-beta>	0.07
47.763	Germacrene D	1.58
82.024	Oleic Acid	5.12
		100.00



Comments:
 The analysis of this Peppermint Spray sample meets the expected chemical profile of pure and natural essential oils.

Copyright © 2019 by Aromatic Plant Research Center (APRC). All rights reserved.
 The information contained in this document may not be used, published or redistributed, including online, without the prior written consent of APRC.

Reviewed by: Ambika Poudel