

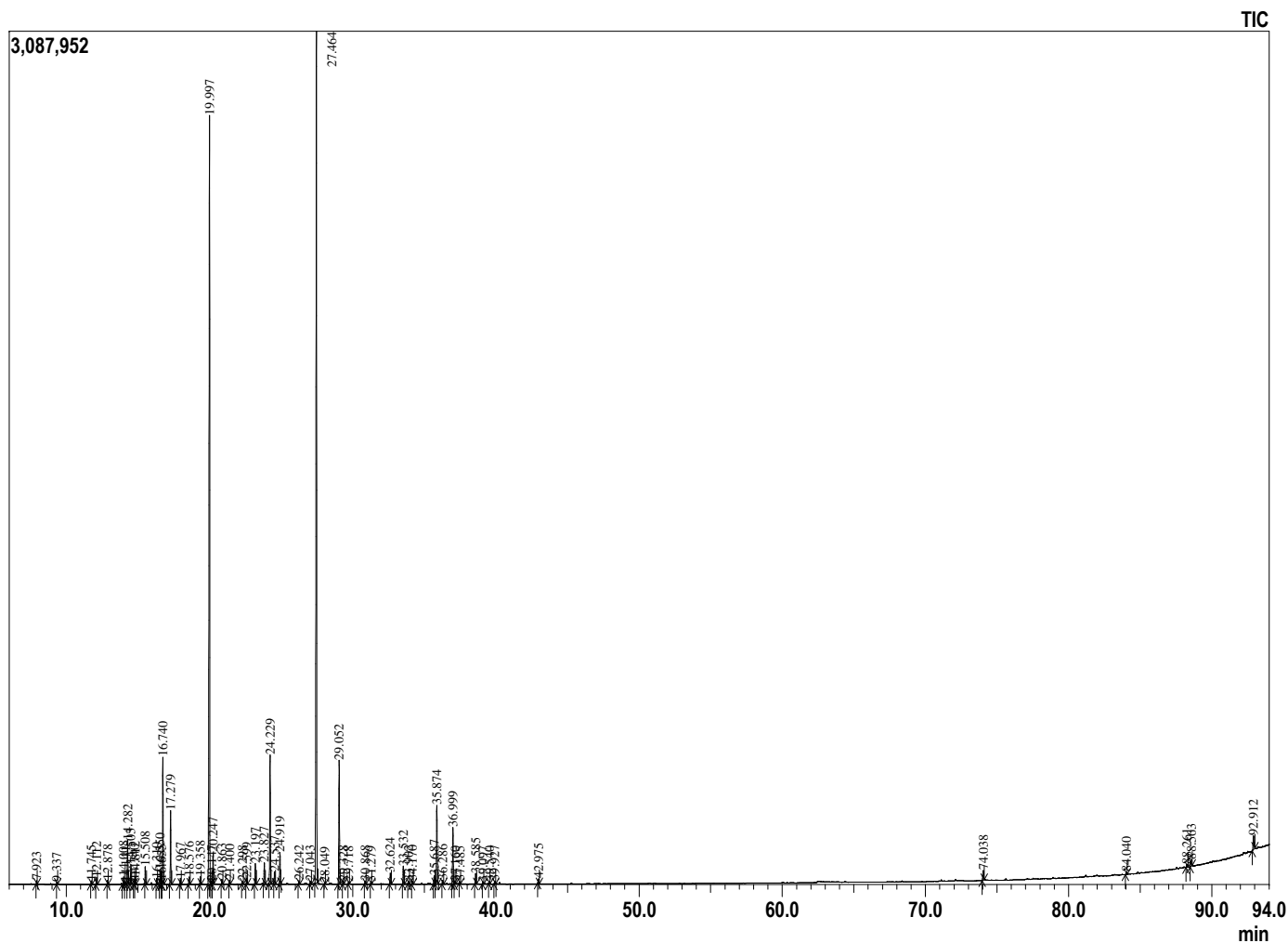
Analyzed by : Dr. Prabodh Satyal
 Analyzed : 7/23/2019 4:23:52 AM
 Sample Type : Essential Oil
 Sample Name : Lavender Roll-On
 Company Name : Gurunanda
 Lot# : NA
 Injection Volume : 0.30

Sample Information



Peak Report TIC

R.Time	Name	Area%
7.923	Hexane, 1-methoxy-	0.08
9.337	Hexanol<n->	0.05
11.745	Thujene <alpha->	0.09
12.112	Pinene <alpha->	0.20
12.878	Camphene	0.12
14.008	1-Octen-3-ol	0.22
14.141	Pinene <beta->	0.06
14.282	3-Octanone	1.32
14.503	Myrcene	0.60
14.740	Butyl butanoate	0.12
14.812	Octanol <3->	0.22
15.508	Hexyl acetate	0.60
16.310	Cymene<para->	0.19
16.550	Limonene	0.49
16.655	Phellandrene <beta->	0.13
16.740	Ocimene <Z-beta>	4.09
17.279	Ocimene <E-beta>	2.38
17.967	Terpinene <gamma>	0.20
18.576	Linalool oxide <cis-(furanoid)>	0.25
19.358	Terpinolene	0.29
19.997	Linalool	30.69
20.147	Propionate hexyl + Hotrienol	0.15
20.247	Octen-3-yl acetate<1>	1.04
20.863	Octanol acetate<3->	0.17
21.400	Ocimene <allo>	0.13
22.298	Hexyl isobutanoate	0.09
22.599	Camphor	0.23
23.197	Lavandulol	0.73
23.827	Borneol	0.82
24.229	Terpinen-4-ol	4.50
24.537	Hexyl butanoate	0.47
24.919	Terpineol <alpha>	1.10
26.242	Nerol	0.12
27.043	Hexyl isovalerate	0.11
27.464	Linalyl acetate	33.40
28.049	Linalool acetate oxide <E>	0.03
29.052	Lavandulyl acetate	4.48
29.328	Bornyl acetate	0.11
29.718	Decadienal<2E,4Z->	0.08
30.868	Decadienal<2E,4E->	0.12
31.279	Hexyl tiglate	0.08
32.624	Neryl acetate	0.39
33.532	Geranyl acetate	0.66
33.902	Hexyl hexanoate	0.12
34.170	Sesquithujene<7-epi->	0.12
35.687	Santalene <alpha>	0.31
35.874	Caryophyllene <beta>	3.09
36.286	Bergamotene<alpha-trans->	0.14
36.999	Farnesene<(E)-beta->	2.03
37.160	Sesquisabinene A	0.10
37.485	Humulene <alpha>	0.06
38.585	Germacrene D	0.42
39.097	Lavandulyl isovalerate <ent>	0.08
39.540	Bisabolene <beta>	0.09
39.927	Amorphene <delta>	0.12
42.975	Caryophyllene oxide	0.17
74.038	Triphenylphosphine oxide	0.47
84.040	C8 Triglyceride	0.09
88.261	C10 Triglyceride	0.16
88.563	Vitamin E	0.29
92.912	Angelicin	0.73
		100.00



Comments:
 The analysis of this Lavender Roll-On sample meets the expected chemical profile of pure and natural blend of essential oils.

Copyright © 2019 by Aromatic Plant Research Center (APRC). All rights reserved.
 The information contained in this document may not be used, published or redistributed, including online, without the prior written consent of APRC.

Reviewed by: Ambika Poudel