

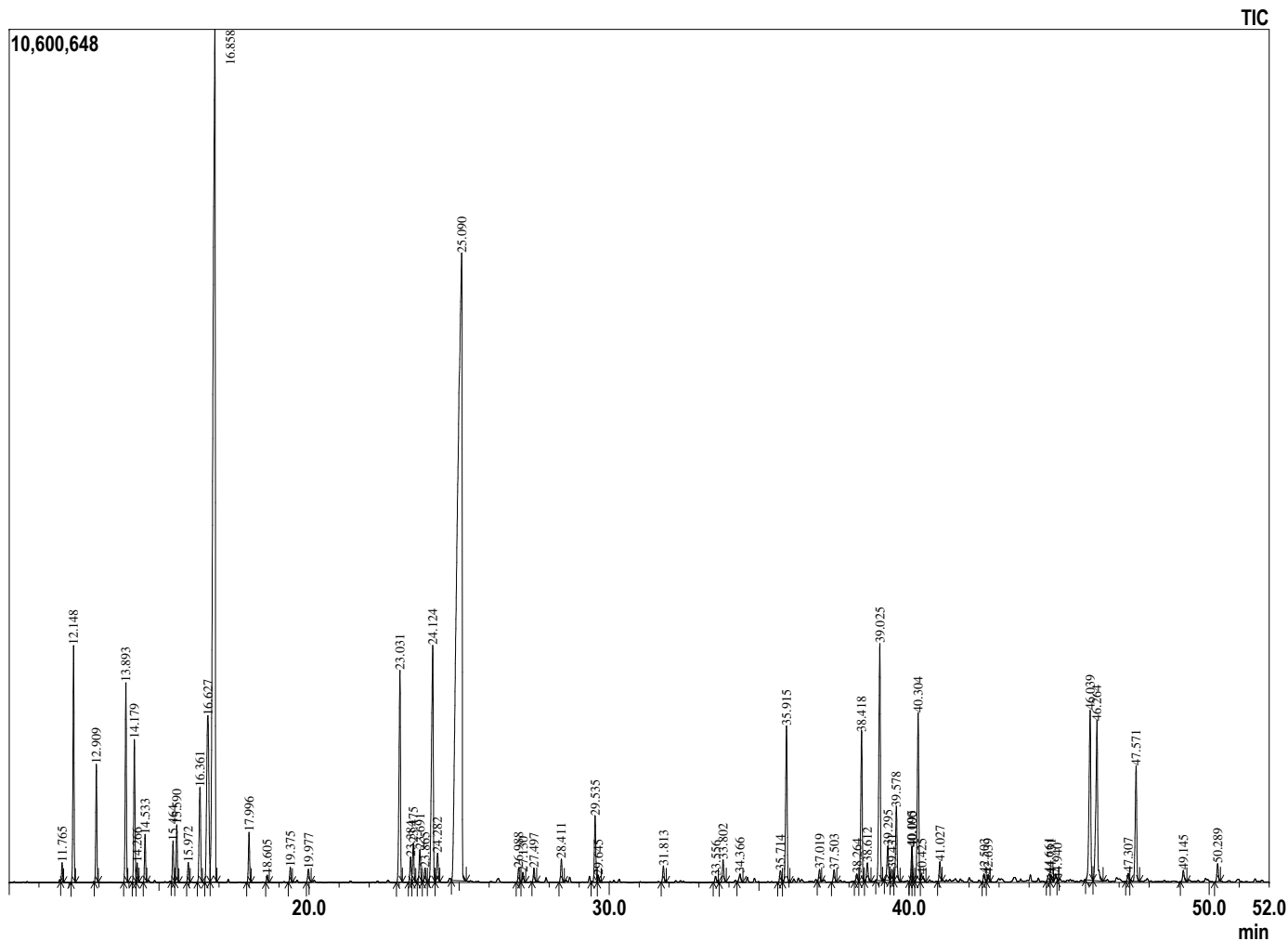
Analyzed by : Dr. Prabodh Satyal
 Analyzed : 7/23/2019 6:13:46 AM
 Sample Type : Essential Oil
 Sample Name : Joints Blend
 Company Name : Gurunanda
 Lot# : NA
 Injection Volume : 0.30

Sample Information



Peak Report TIC

R.Time	Name	Area%
11.765	Thujene <alpha>	0.19
12.148	Pinene <alpha>	2.64
12.909	Camphene	1.30
13.893	Sabinene	2.34
14.179	Pinene <beta>	1.65
14.266	Hept-5-en-2-one <6-methyl>	0.20
14.533	Myrcene	0.54
15.464	Phellandrene <alpha>	0.48
15.590	Carene<delta-3>	0.66
15.972	Terpinene <alpha>	0.24
16.361	Cymene<para>	1.45
16.627	Limonene	3.69
16.858	1,8-cineole	18.83
17.996	Terpinene <gamma>	0.60
18.605	Sabinene hydrate <cis>	0.09
19.375	Terpinolene	0.19
19.977	Linalool	0.19
23.031	Menthone	3.10
23.384	menthofuran	0.34
23.475	Isomenthone	0.53
23.691	Neomenthol	0.47
23.865	Borneol	0.20
24.124	Menthol	4.28
24.282	Terpinen-4-ol	0.43
25.090	Methyl salicylate	29.65
26.988	Neral	0.19
27.130	Pulegone	0.14
27.497	Geraniol	0.18
28.411	Geranial	0.31
29.535	Menthyl acetate	0.96
29.645	Safrole	0.10
31.813	Elemene <delta>	0.22
33.556	Geranyl acetate	0.09
33.802	Copaene <alpha>	0.31
34.366	Elemene <beta>	0.14
35.714	Santalene <alpha>	0.17
35.915	Caryophyllene <beta>	2.40
37.019	Farnesene<(E)-beta>	0.17
37.503	Humulene <alpha>	0.18
38.264	Curcumene<gamma>	0.13
38.418	Curcumene <alpha>	2.21
38.612	Germacrene D	0.30
39.025	Zingiberene<alpha>	3.60
39.295	Farnesene <(E,E)alpha>	0.55
39.431	Murolene <alpha>	0.17
39.578	Bisabolene <beta>	1.13
40.095	Isobicyclgermacrene	0.30
40.100	Cadinene <delta>	0.24
40.304	Sesquiphellandrene <beta>	2.54
40.425	Bisabolone <E-gamma>	0.15
41.027	Elemicin	0.27
42.503	Tumerol<ar>	0.12
42.639	Santalene	0.11
44.661	Eudesmol <10-epi-gamma>	0.14
44.731	Sesquisabinene hydrate	0.10
44.940	Eudesmol <gamma>	0.01
46.039	Turmerone-Ar	2.92
46.264	Turmerone-alpha	2.84
47.307	Farnesol <(2Z,6Z)>	0.12
47.571	Turmerone<beta>	1.76
49.145	Bisabolone <6S,7R>	0.19
50.289	Atlantone <E-alpha>	0.26
		100.00



Comments:
 The analysis of this Joints blend sample meets the expected chemical profile of pure and natural blend of essential oils.

Copyright © 2019 by Aromatic Plant Research Center (APRC). All rights reserved
 The information contained in this document may not be used, published or redistributed, including online, without the prior written consent of APRC.

Reviewed by: Ambika Poudel